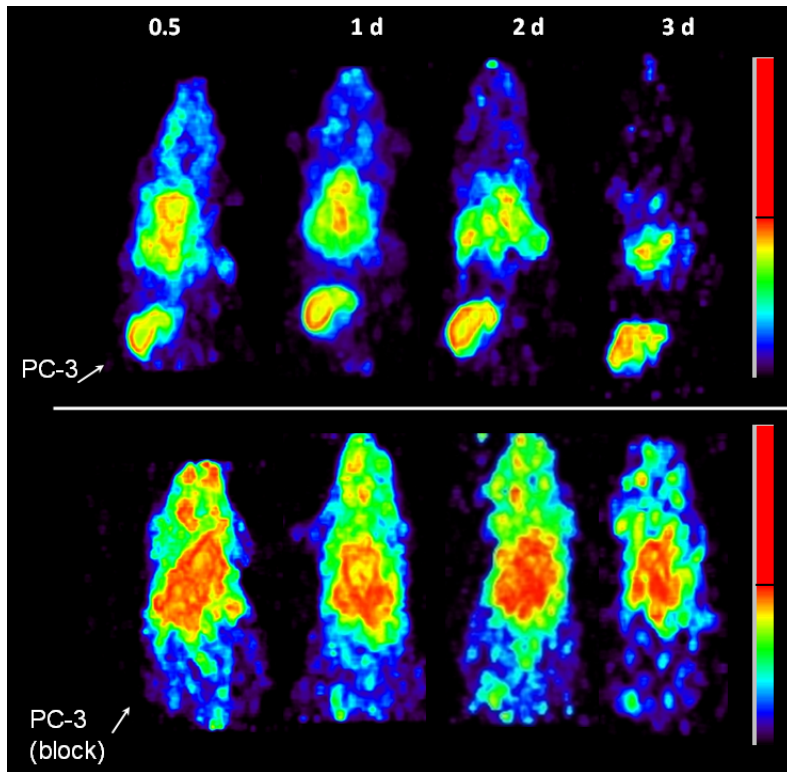


**Supplemental Figure 1:** Representative HPLC chromatogram (solid line = radiometric, dotted line = UV) of  $^{86}\text{Y}$ -CHX-A''-DTPA-panitumumab after 1 d incubation at 4° C.



**Supplemental Figure 2:** Representative reconstructed and processed maximum intensity projections of female athymic (NCR) *nu/nu* mouse bearing human prostate carcinoma PC-3 tumor xenografts (3C and 3D). Mice represented in top panel figure were injected i.v. via tail vein with 1.8-2.0 MBq of  $^{86}\text{Y}$ -CHX-A''-DTPA-panitumumab, and mice represented in bottom panel were co-injected i.v. via tail vein with 1.8-2.0 MBq of  $^{86}\text{Y}$ -CHX-A''-DTPA-panitumumab and 0.1 mg Panitumumab for blocking HER1. The tumors are indicated with a white arrow. The scale represents % maximum and minimum threshold intensity.