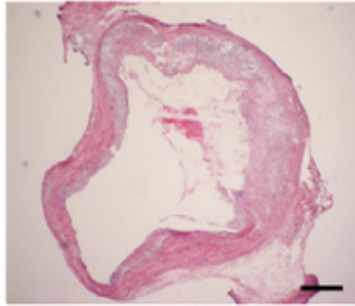
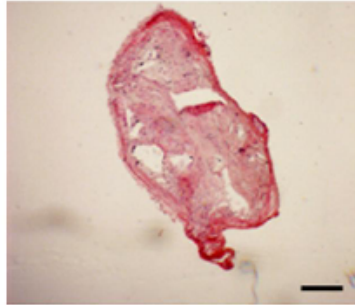


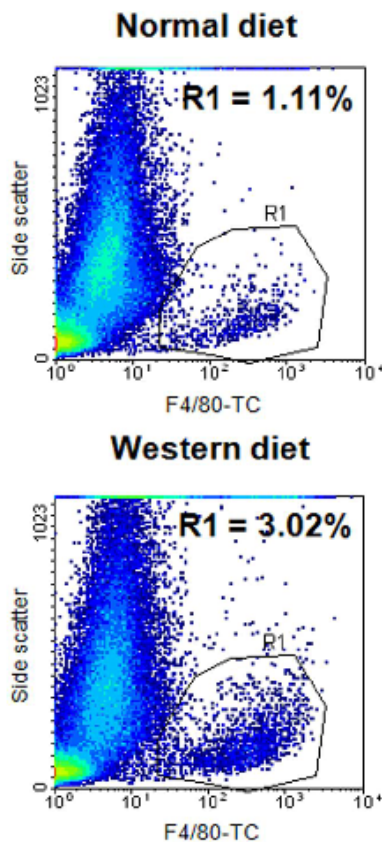
A.



B.



Supplemental Figure 1. H&E staining of atherosclerotic artery sections. *ApoE*^{-/-} mice were fed a Western diet for 25 weeks. Sections of their ascending aorta and brachiocephalic arteries were prepared and stained with hematoxylin and eosin. Consecutive sections were used for Mac-3 histochemistry or autoradiography (Fig. 4). Bar = 100 μ m.



Supplemental Figure 2. Percentage increase in total macrophage numbers in *apoE*^{-/-} mice on a Western diet. *ApoE*^{-/-} mice were fed a normal (upper panel) or Western diet (lower panel) for a period of 25 weeks. Mice were euthanized and thoracic aortas excised and digested with collagenase and elastase. The resulting cell suspensions were analyzed by flow cytometry after incubation with Tri-color conjugated F4/80 antibody.