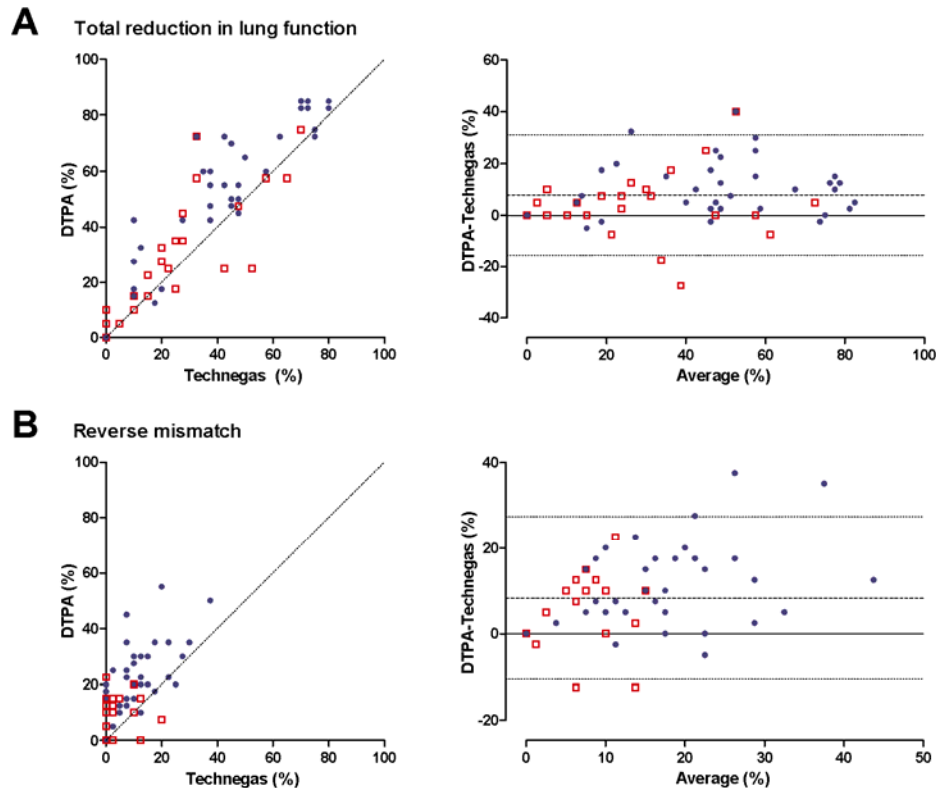


**SUPPLEMENTAL FIGURE 1.** V/P SPECT images and mean interpretation scores from two non-obstructive patients. (A) Images from a patient with suspected PE show extensive, mismatched perfusion defects of segmental character. Technegas tends to better delineate the parenchyma in the costodiaphragmatic recesses (arrow). (B) Patient with alveolitis observed as an elevated background activity only in DTPA images (arrow).



**SUPPLEMENTAL FIGURE 2.** The relationship between the degree of total lung function reduction (A), scored as percentage of total lung volume, in ventilation/perfusion images using DTPA or Technegas, for ventilation imaging. (B) The relationship between DTPA and Technegas regarding extent of reverse mismatches (i.e. where ventilation is more reduced than perfusion), in percentage of the total lung volume. Right panels show the difference between DTPA and Technegas scores against the average score of the two ventilation radio-pharmaceuticals. Dotted lines in right panels represent the 95% limits of agreement.