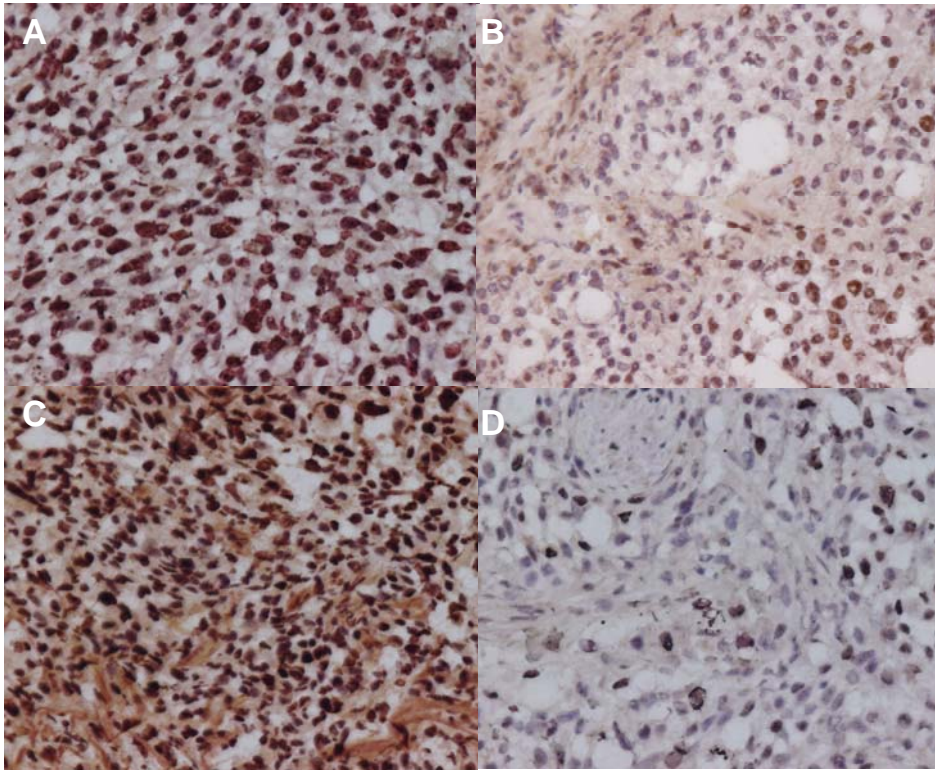


SUPPLEMENTAL FIGURE 1. Planar Gamma Images of Foxn1^{nu/nu} mice bearing PC-3 (A), LNCaP (B), and DU145 (C) tumors. Images were acquired 24 h after tail vein injection with ¹⁷⁷Lu-AMBA (27.75 MBq). Arrows indicate tumor location; P = pancreas. Standards for PC-3 and LNCaP were (clockwise from lower left): 0.2, 0.5, 1, 2, and 4% of the injected dose. DU145 standards were 0.2, 0.5, 1, and 2% of the injected dose.



SUPPLEMENTAL FIGURE 2. Ki67 immunohistochemical staining (400X) revealed greater proliferation in Control (A; Study Day 60) over Treated (B; Study Day 60) LNCaP tumors. This change in proliferation rate was also seen in the DU145 Control (C; Study Day 48) over Treated (D; Study Day 26).