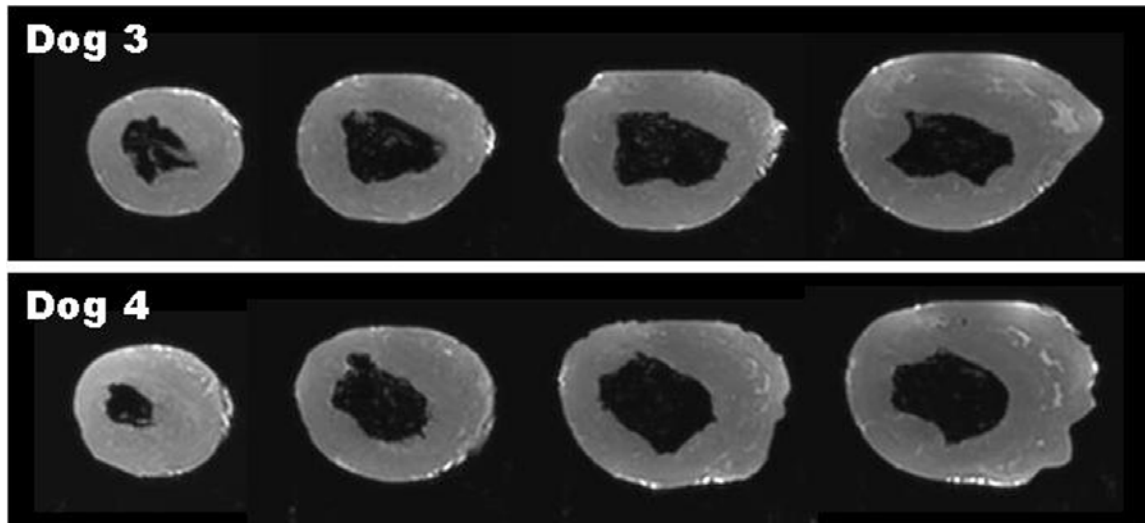


Supplemental Figure 1. *In vitro* retention of ¹¹¹In in canine BMSCs as evaluated by gamma camera imaging. Biological half-life of ¹¹¹In in BMSCs was calculated to be 14.1 days ($r^2=0.96$).



Supplemental Figure 2. *Ex vivo* magnetic resonance images of canine myocardium 3 weeks after injection of free ^{111}In -tropolone. Gd-DTPA was injected with a bolus (0.2 mmol/kg) followed by a constant infusion (0.004 mmol/kg/min) ~60 minutes prior to sacrifice after which the heart was excised and imaged immediately at 1.5T (Avanto, Siemens Medical Solutions, Erlangen Germany) using a high resolution 3D FLASH sequence (TR/TE 22/10 msec, 40° flip angle, in-plane resolution 0.39 to 0.59 mm, slice thickness 1 mm). Shown are short axis slices taken from within the injection area (distal to 1st diagonal branch of LAD).