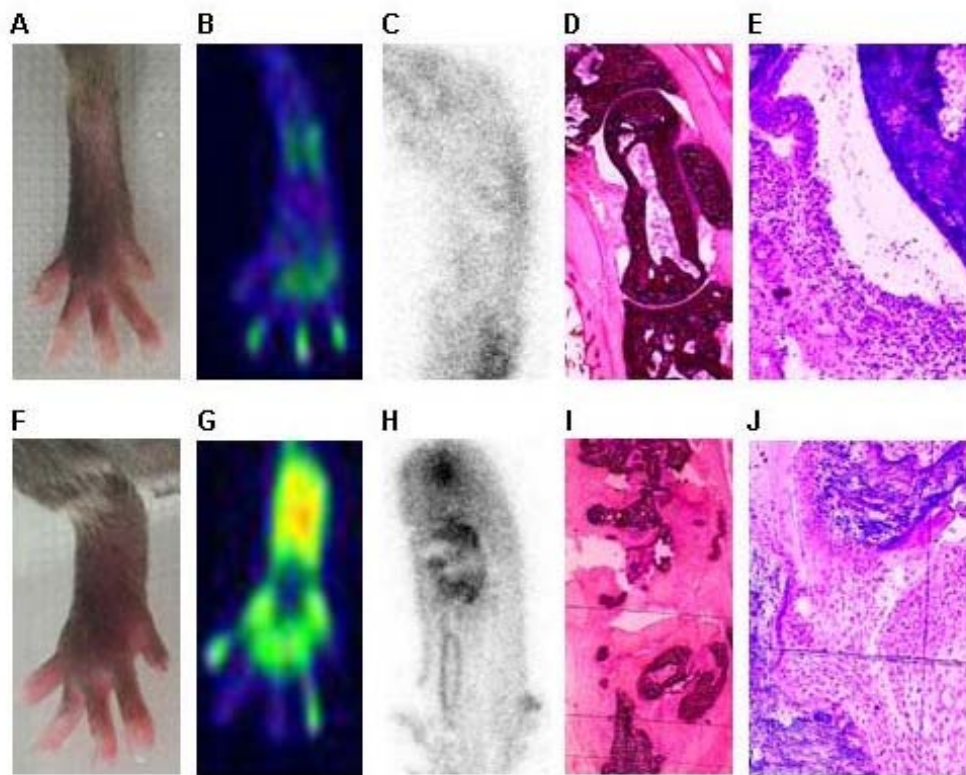


Supplemental Figure 1. Disease progression of CIA rat model. Time course of clinical score in CIA rats (\square , $n = 4$) and control rats (\blacksquare , $n = 5$) (A). Gross findings of hind paw of control and CIA rats 10, 14, and 17 days after collagen injection (B).



Supplemental Figure 2. CIA mouse model. Gross findings (A, F), PET images (B, G), and macroautoradiograms of sagittal sections (C, H). HE staining of tarsal joints (D, I) and enlarged views (E, J). Data are from control mouse (A–E) and CIA mouse 21 days after second induction (F–J).