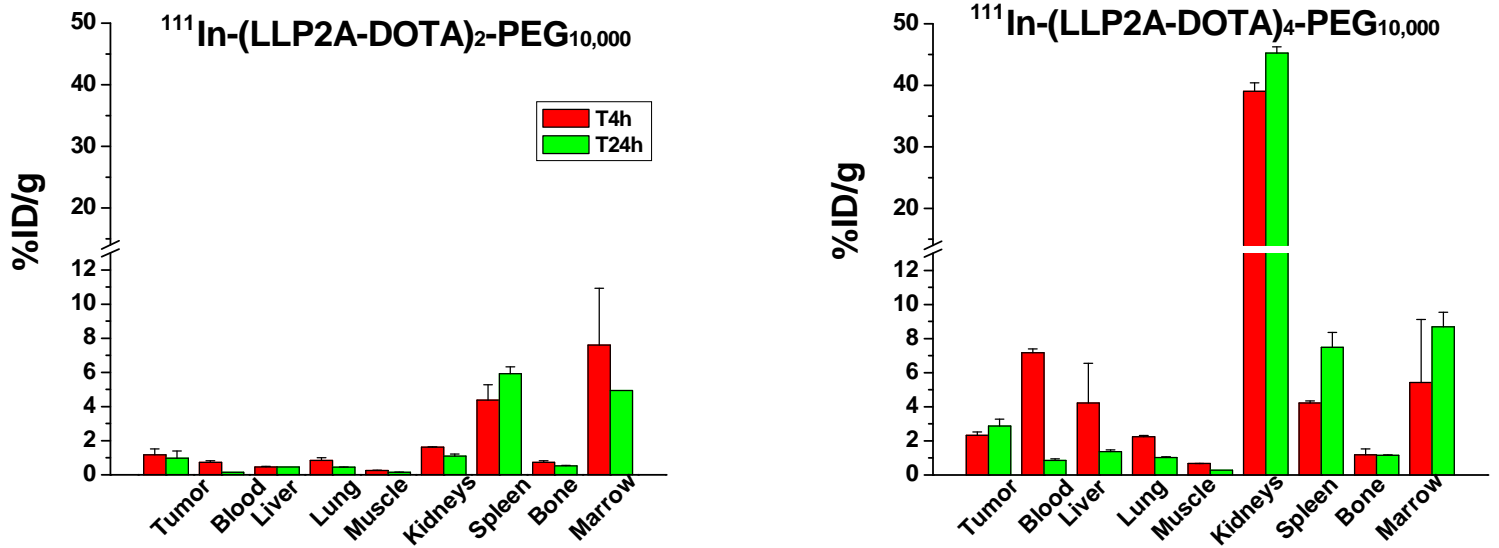


Supplemental Figure 2



Biodistribution and tumor targeting of PEGylated multivalent ^{111}In -LLP2A-DOTA constructs to determine if the increase in valence is effective in tumor uptake and retention of the targeted molecule. Although tumor uptake of the tetramer at 24 hours appears prolonged, the uptake and retention in kidney compared to tumor results in the lack of T/NT enhancement.