

FPLC profiles of Herceptin, m-MeATE-Herceptin, and ^{211}At -Herceptin

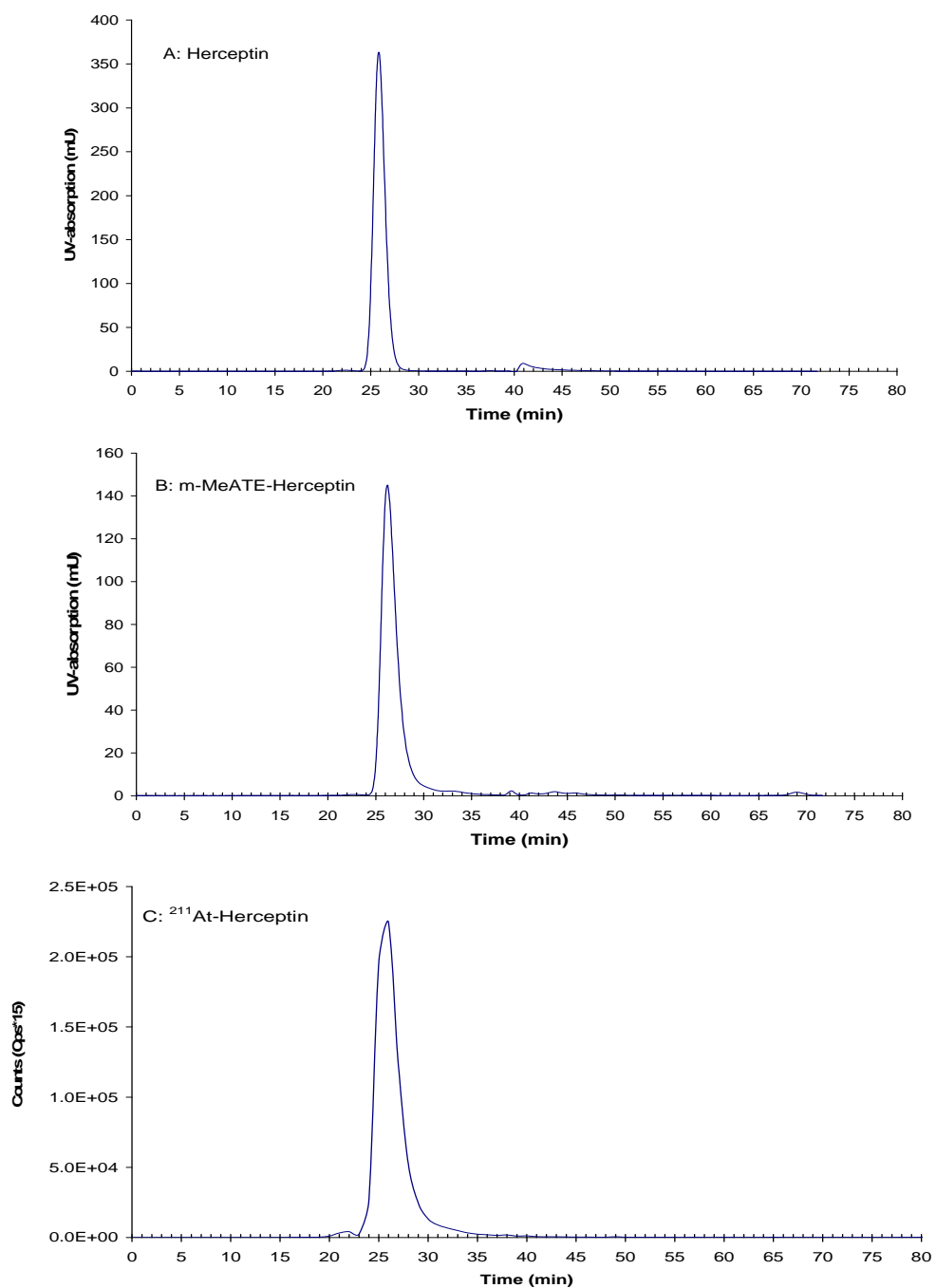


Figure 1. Size-exclusion FPLC chromatograms of Herceptin (A), and conjugates prepared for the study, m-MeATE-Herceptin (B) and ^{211}At -Herceptin (C).
Column: Superdex 200
Mobile phase: PBS
Flow: 0.5 mL/min