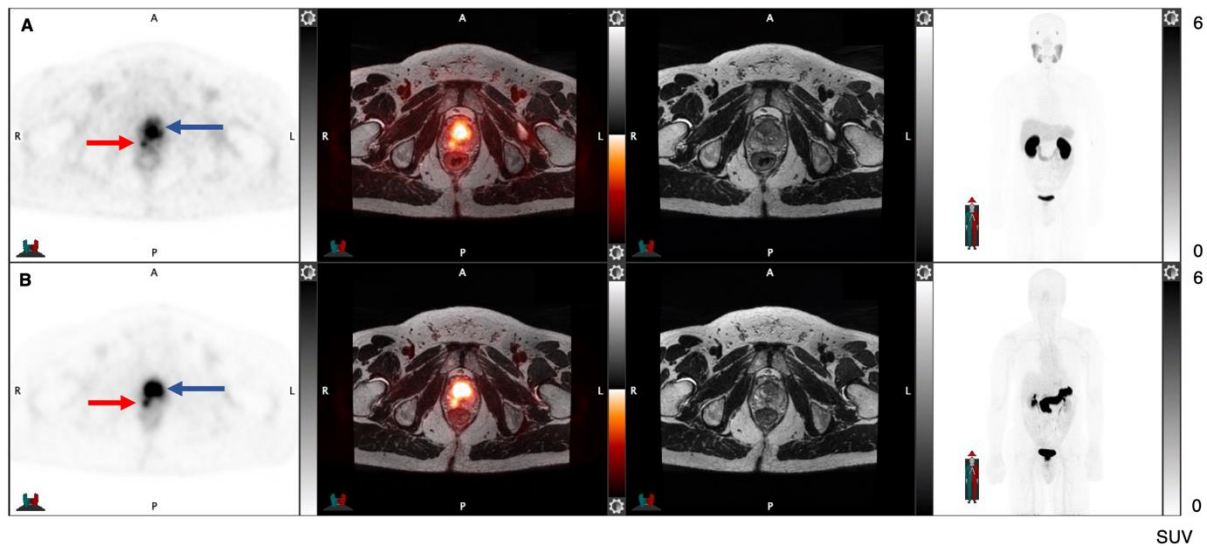
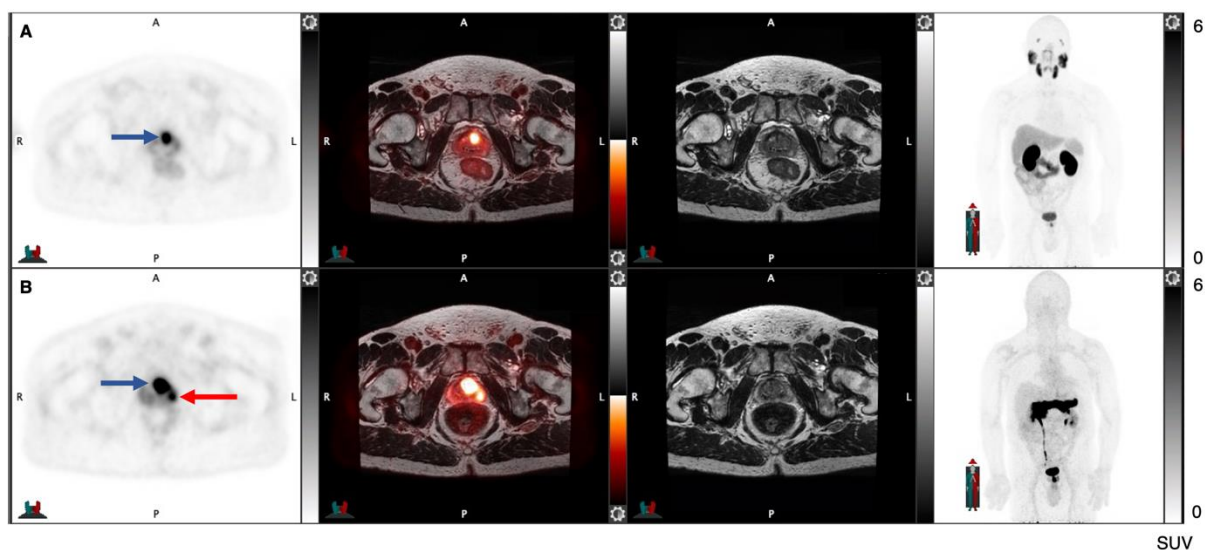


Supplemental Figures



Supplemental Figure 1: 62-year-old man presenting with PSA 9.0 ng/mL and PSA density 0.24 ng/mL². ^{68}Ga -PSMA11 (A, axial PET, fused PET/MRI, MRI, and maximum intensity projection [MIP] images) and ^{68}Ga -RM2 PET/MRI (B) show concordance of focal uptake anterior in the apex of the prostate (blue arrow) correlating to a Gleason 3+4 cancer and right medial (red arrow) corresponding to a Gleason 3+3 lesion.



Supplemental Figure 2: 69-year-old patient with prior equivocal mpMRI and negative prostate biopsy but persistent elevated PSA of 20.9 ng/mL and PSA density 0.68 ng/mL². ⁶⁸Ga-PSMA11 (A, axial PET, fused PET/MRI, MRI, and MIP images) and ⁶⁸Ga-RM2 PET/MRI (B) show congruent focal uptake anterior in the apex of the prostate (blue arrow) correlating to Gleason 4+5 cancer. ⁶⁸Ga-RM2 identified additional uptake lateral left (red arrow) corresponding to a Gleason 3+3 lesion.