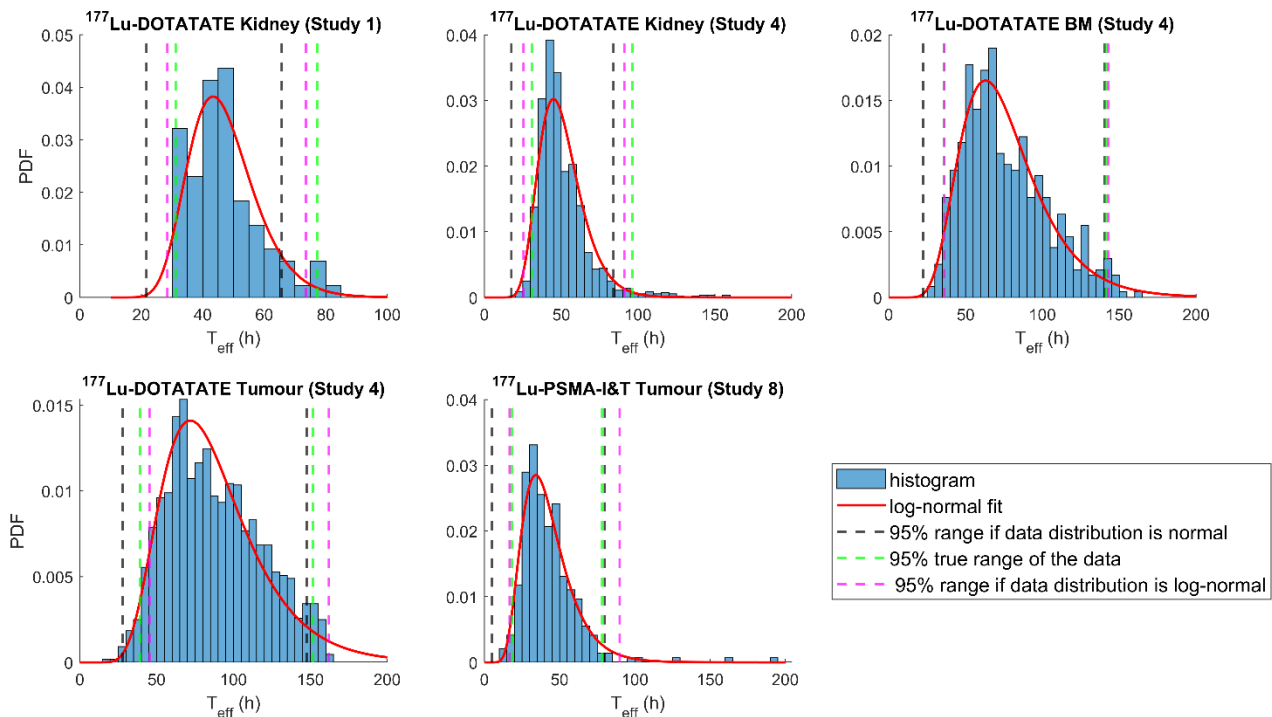


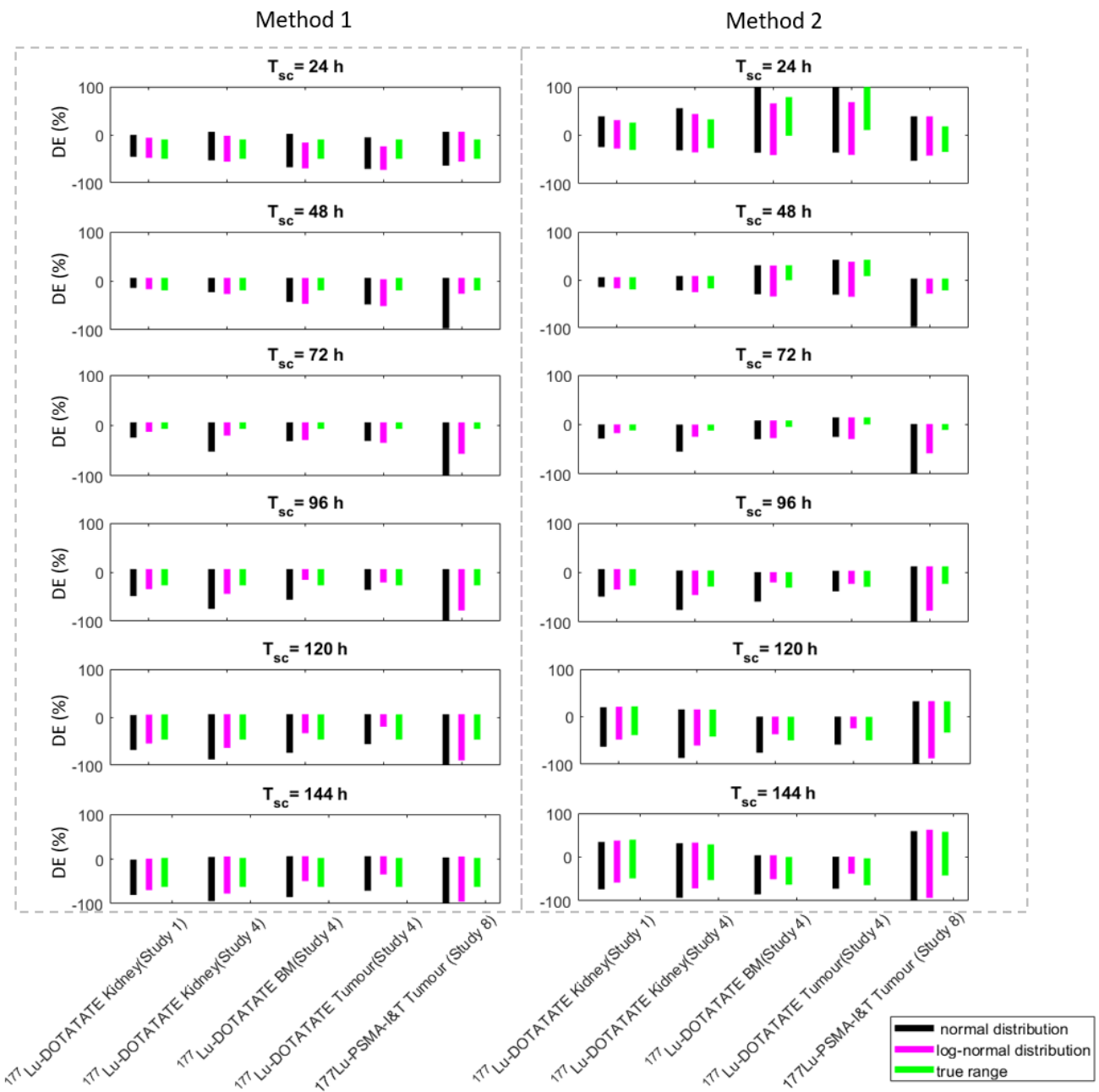
Supplemental Material

Supplemental Table 1: Results of the Kolmogorov-Smirnov (K-S) test along with p-values, on five full datasets with complete listing of half-lives for all patients, as listed in Table 2. P-values larger than 0.05 indicate match with the null hypothesis (e.g. that data distribution is normal, top, or log-normal, bottom)

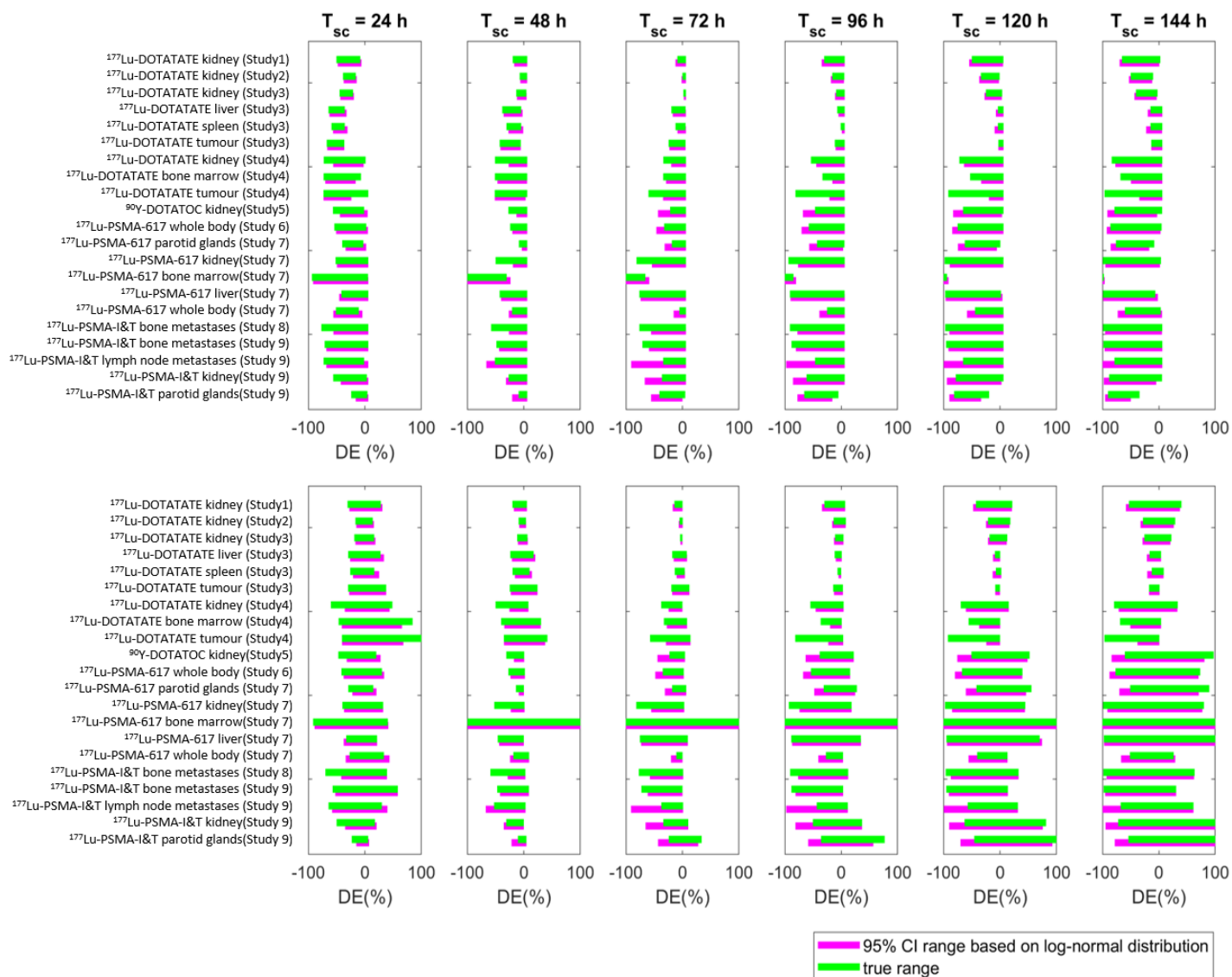
	¹⁷⁷ Lu-DOTATATE Kidney (Study 1)	¹⁷⁷ Lu-DOTATATE Kidney (Study 4)	¹⁷⁷ Lu-DOTATATE BM (Study 4)	¹⁷⁷ Lu-DOTATATE Tumour (Study 4)	¹⁷⁷ Lu-PSMA-I&T Tumour (Study 8)
Normal	Yes	No	No	No	No
p-value	0.08	5.40E-17	1.74E-04	8.49E-08	0.001
Log-Normal	Yes	No	Yes	No	Yes
p-value	0.47	5.86E-06	0.60	0.0010	0.71



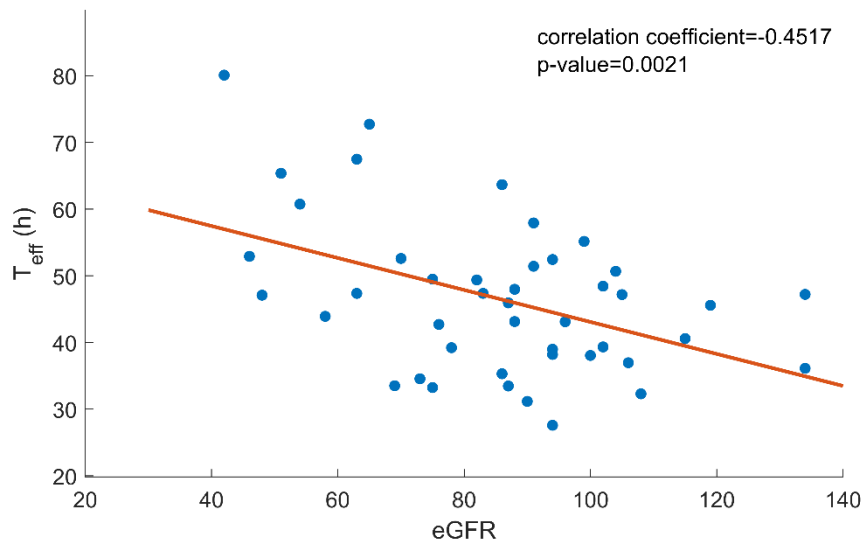
Supplemental Figure 1: Distribution fitting and 95% confidential interval (range) comparison of effective half-lives for the five full datasets mentioned in Table S1, involving ¹⁷⁷Lu-Dotatate and ¹⁷⁷Lu-PSMA-I&T.



Supplemental Figure 2: Dose errors (DE, %) comparisons for ranges of half-lives computed based on (i) normal and (ii) log-normal distributions, as well as (iii) the true range of half-life values covering 95% of the data, for the five full datasets from Study 1, 4 and 8 with complete list of half-lives.



Supplemental Figure 3: DE(%) comparisons for ranges of half-lives computed based on (i) 95% CI range from estimated log-normal distributions and (ii) the true range of half-life values from published data. The upper plots represent the DE values for Method 1, while the lower plots represent the DE values for Method 2.



Supplemental Figure 4: The relationship between eGFR and patient specific half-life from Study 1 of Table 2.