

SUPPLEMENTAL FIGURE 1.

(A). The CRPC patients (Gleason score, 8) had a PSA of 8.0 at the time of imaging. Dual-tracer PET/CT detected PSMA-FDG+ lymph node (yellow arrow) on the right inguinal area. Lymph node dissection confirmed that this PSMA-FDG+ lesion was lymph node metastasis by histopathology.

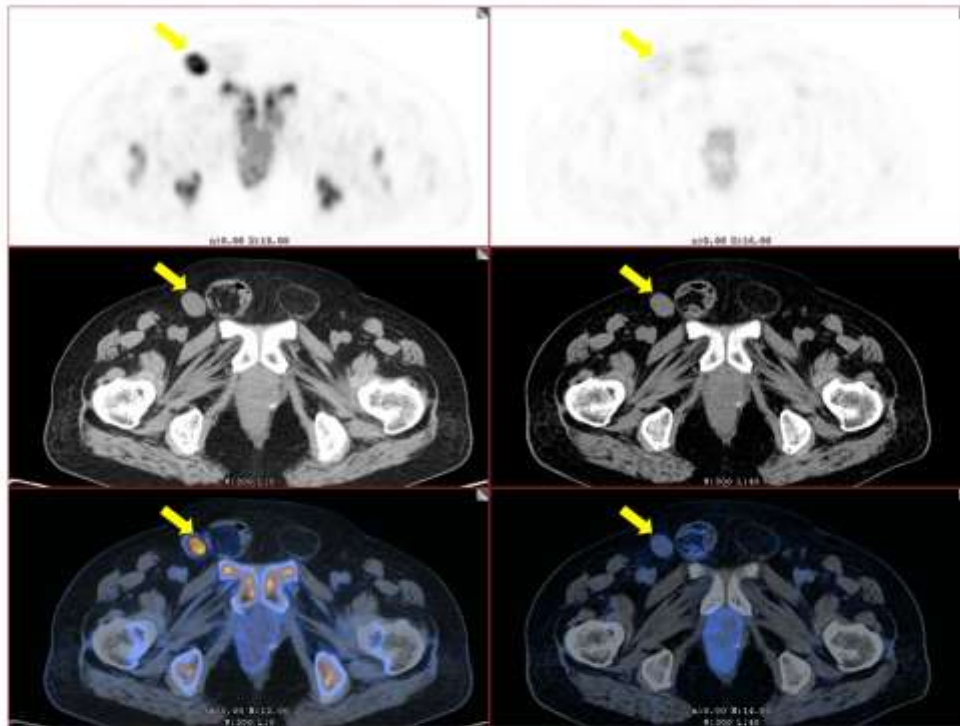
(B) The CRPC patients (Gleason score, 7) had a PSA of 0.3 at the time of imaging. Dual-tracer PET/CT detected PSMA+FDG- lymph node (yellow arrow) on the parailiac vessels. Lymph node dissection confirmed that this PSMA+FDG- lesion was lymph node metastasis by histopathology.

A

Patients with PSMA-FDG+ lesions

^{18}F -FDG PET/CT

^{68}Ga -PSMA PET/CT



B

Patients with PSMA+FDG- lesions

^{18}F -FDG PET/CT

^{68}Ga -PSMA PET/CT

