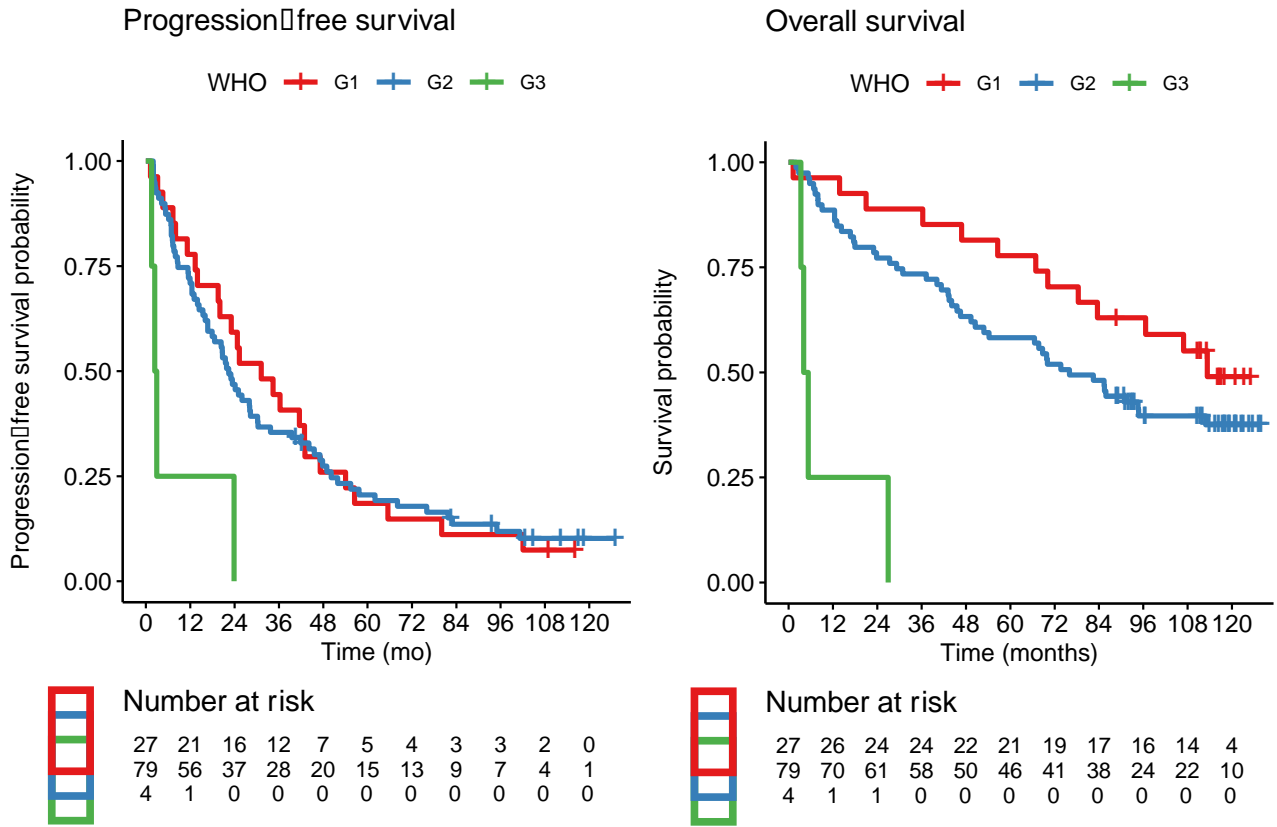


SUPPLEMENTAL FIGURE 1. HR (solid line) and corresponding 95% CI (dotted lines) at every possible cutoff of minimum SUV_{mean} and total tumor volume in regards to PFS and OS. Distribution of observations is shown along the x-axis. Vertical solid line is placed at median values. Horizontal dotted line at $HR = 1$. For total tumor volume and minimum SUV_{mean} , the plots show that the median is a reasonable cutoff. HR: hazard ratio. CI: confidence interval. PFS: progression-free survival. OS: overall survival. SUV: standardized uptake value.

SUPPLEMENTAL FIGURE 2. Kaplan-Meier plots of progression-free survival and overall survival for patients grouped by WHO classification.



SUPPLEMENTAL TABLE 1. Univariate Cox Regression Analyses for Progression-Free Survival and Overall Survival.

Progression-free survival						
	<i>Small intestine</i>			<i>Pancreas</i>		
Group	n	HR (95% CI)	P	n	HR (95% CI)	P
VhSl	20	Reference	-	11	Reference	-
VhSh	10	0.63 (0.28-1.42)	0.26	3	0.31 (0.08-1.19)	0.09
VISl	11	1.2 (0.56-2.55)	0.63	0	NA	-
VISh	25	0.47 (0.24-0.90)	0.02	11	0.22 (0.08-0.61)	<0.01
Overall survival						
	<i>Small intestine</i>			<i>Pancreas</i>		
Group	n	HR (95% CI)	P	n	HR (95% CI)	P
VhSl	20	Reference	-	11	Reference	-
VhSh	10	0.61 (0.23-1.60)	0.31	3	0.41 (0.09-1.89)	0.25
VISl	11	0.48 (0.18-1.25)	0.13	0	NA	-
VISh	25	0.29 (0.12-0.68)	<0.01	11	0.23 (0.08-0.69)	<0.01

Patients with high total tumor volume and low minimum SUV_{mean} are reference. HR = hazard ratio. CI = confidence interval. SUV = standardized uptake value. VhSl = high total tumor volume + low minimum SUV_{mean}. VhSh = high total tumor volume + high minimum SUV_{mean}. VISl = low total tumor volume + low minimum SUV_{mean}. VISh = low total tumor volume + high minimum SUV_{mean}.

SUPPLEMENTAL TABLE 2. Univariate Cox regression analyses for progression-free survival and overall survival. WHO Grade 1 as reference. N=110. HR: hazard ratio. CI: confidence interval

Progression-free survival		
Group	HR (95% CI)	p-value
Grade 1 (n=27)	Reference	
Grade 2 (n=79)	1.05 (0.66-1.65)	0.84
Grade 3 (n=4)	4.88 (1.66-14.32)	<0.01
Overall survival		
Group	HR (95% CI)	p-value
Grade 1 (n=27)	Reference	
Grade 2 (n=79)	1.60 (0.87-2.96)	0.13
Grade 3 (n=4)	18.08 (5.42-60.26)	<0.001