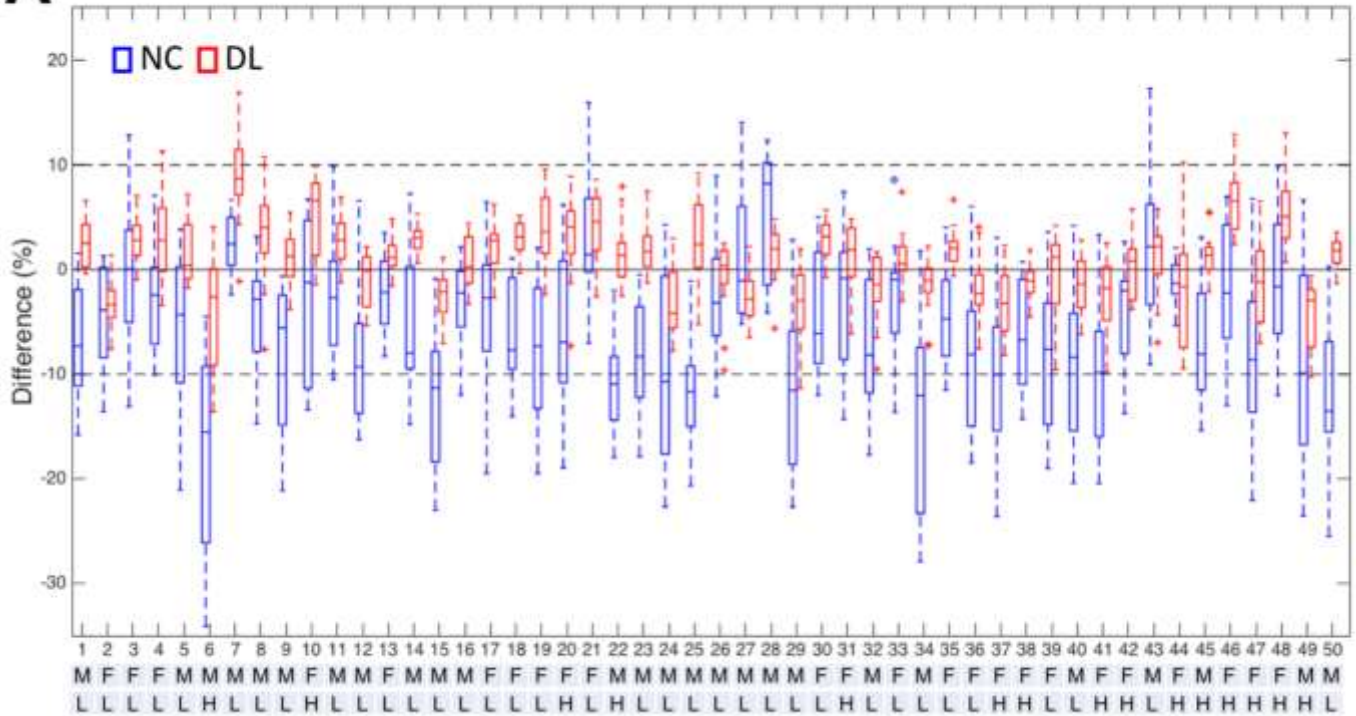
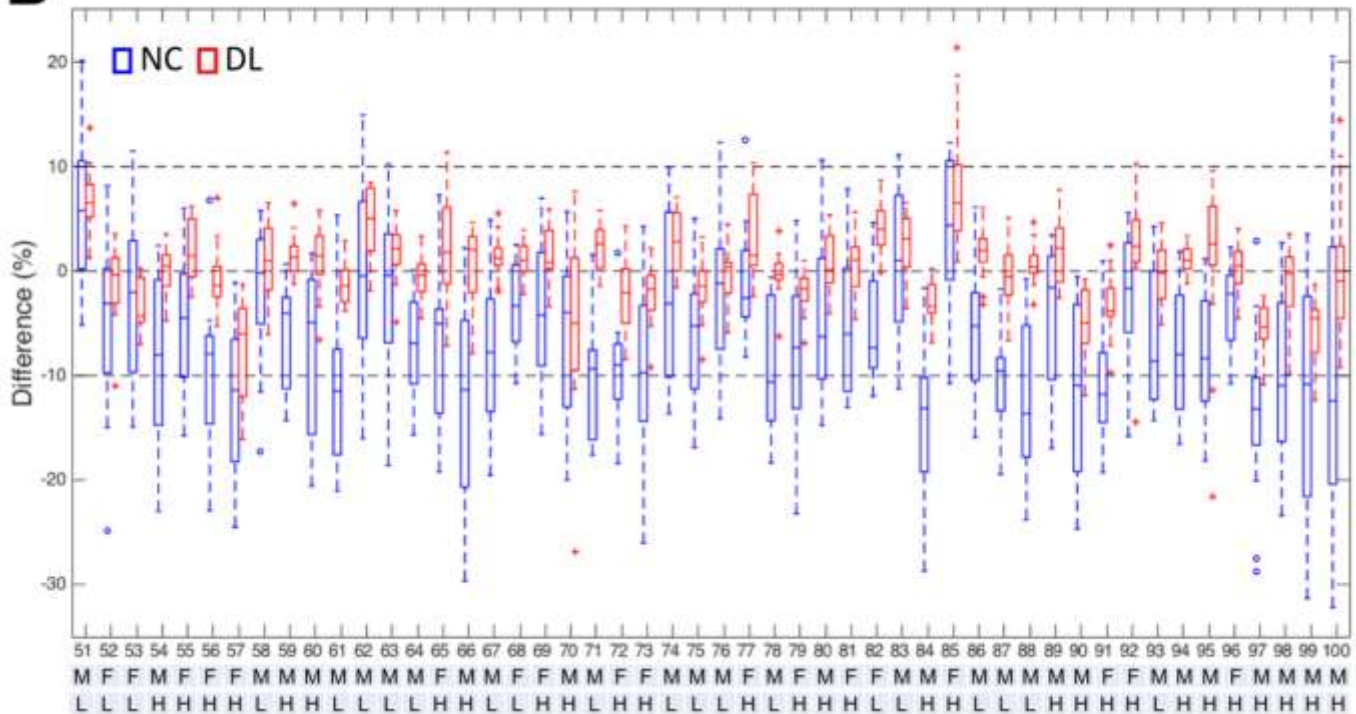
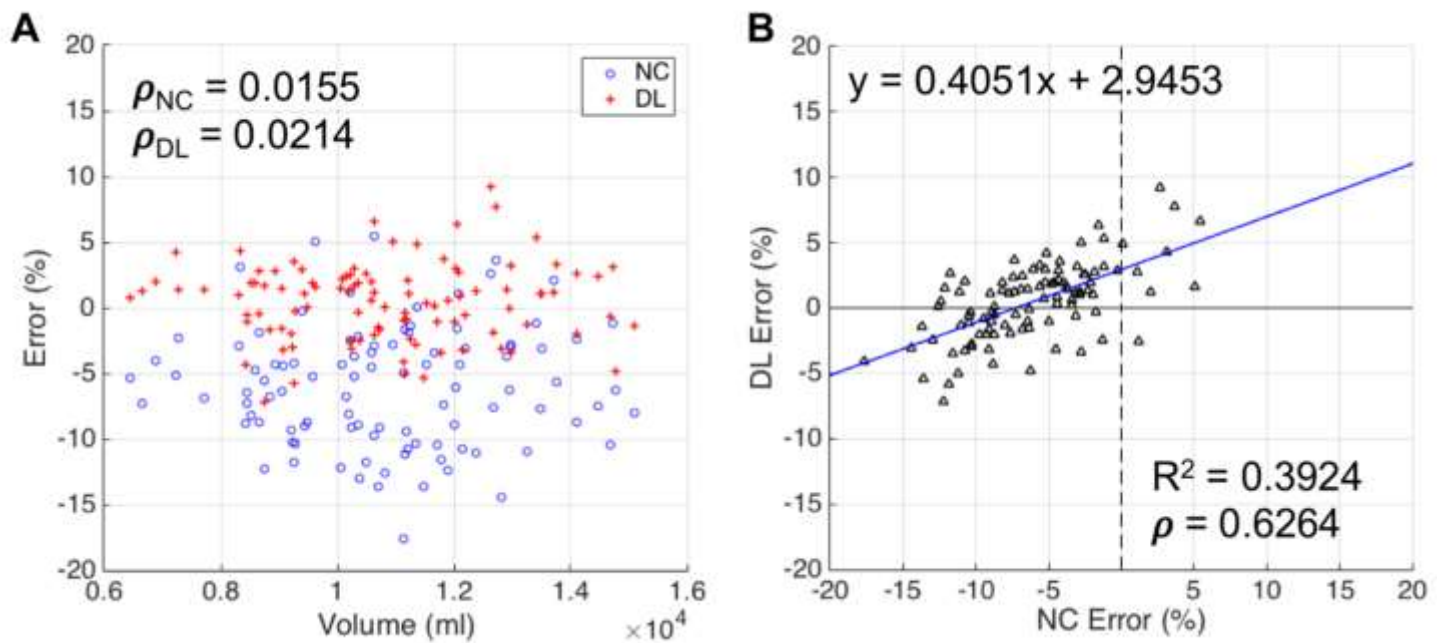


Supplemental Figure 1. Box plots for percentage segmental errors across (A) male and female subjects and (B) subjects with HLU and LLU (reference: SPECT_{CTAC}, NC: non-corrected, DL: deep learning, M: male, F: female, HLU: high liver uptake, LLU: low liver uptake).

A**B**

Supplementary Figure 2. Box plots of (A) 1-50 and (B) 51-100 subjects for percentage segmental errors for SPECT_{NC} (blue) and SPECT_{DL} (red) (reference: SPECT_{CTAC}, M: male, F: female, H: high liver uptake, L: low liver uptake).



Supplementary Figure 3. (A) Scatter plot of the chest volumes (x-axis) and average segmental errors (y-axis) of SPECT_{NC} (blue) and SPECT_{DL} (red) across 100 subjects and (B) affine regression relation between the errors of SPECT_{NC} (x-axis) and those of SPECT_{DL} (y-axis) across 100 subjects (ρ = correlation coefficient).