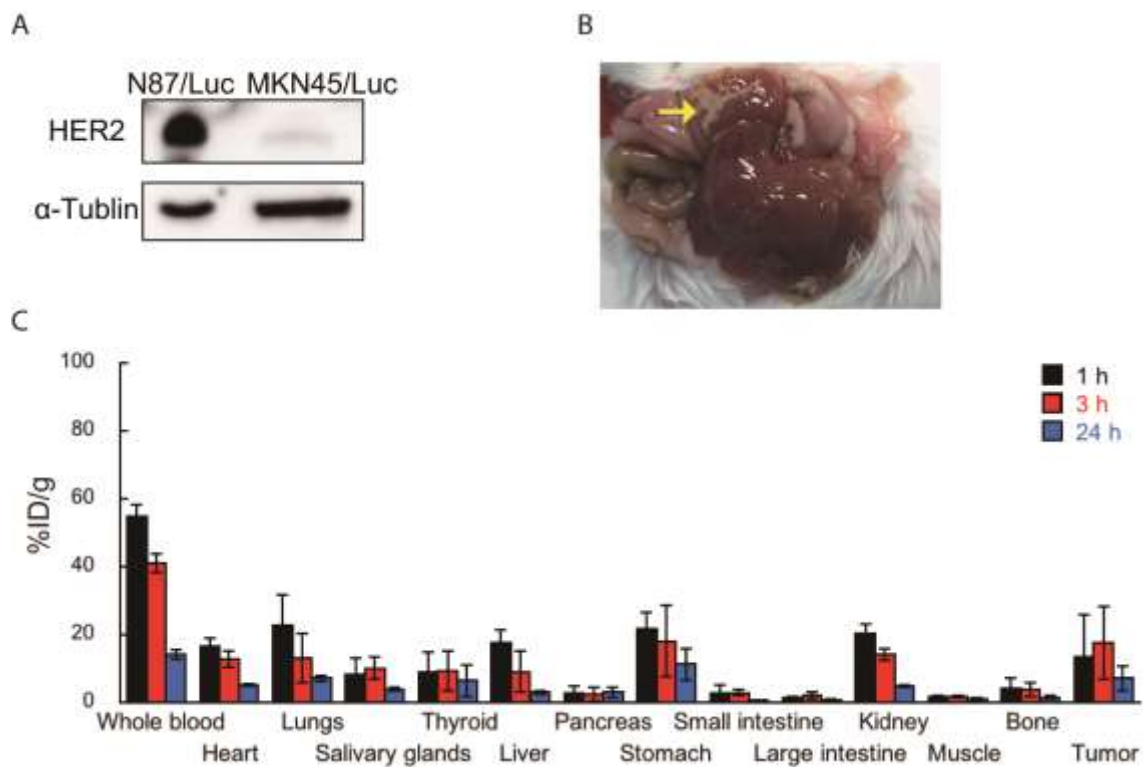
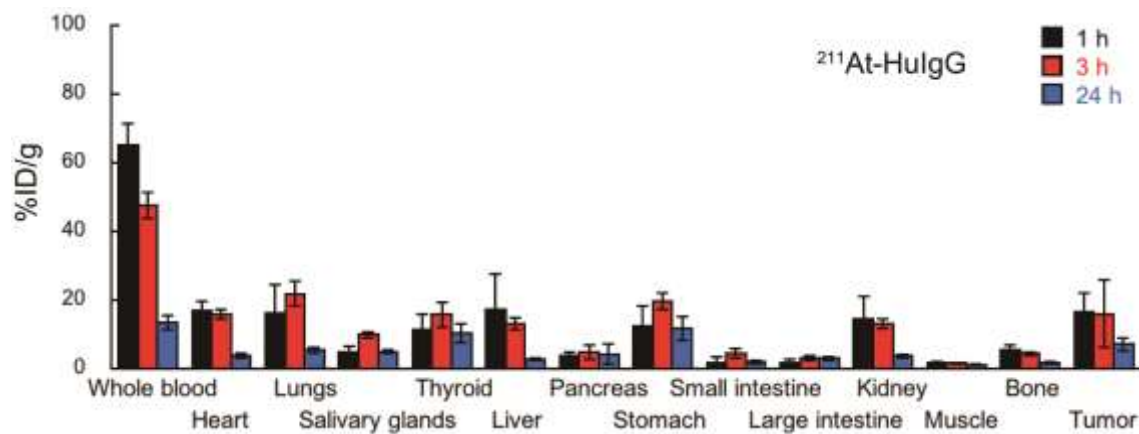


SUPPLEMENTAL FIGURE 1. Chemiluminescence images of the LMGC lesions in the model mice with the abdomen closed (A) and opened (B). Color scale indicates the luminescence intensity per pixel. (C) Visual images of the data shown in (B). (D) Liver dissected from the same mouse. Arrows in (C) and (D) highlight the visible lesions. (E) H&E and (F) HER2 immunohistochemical staining of an LMGC dissected from the xenograft mouse model.



SUPPLEMENTAL FIGURE 2. An LMGC mouse model generated using MKN45/Luc cells. (A) Western blotting analysis. (B) Visual image of the LMGCs. The yellow arrow indicates the visible tumor. (C) Biodistribution of ^{211}At -trastuzumab in the MKN45/Luc-LMGC model mice.



SUPPLEMENTAL FIGURE 3. Biodistribution of ^{211}At -HuIgG in the N87/Luc-LMGC model mice.