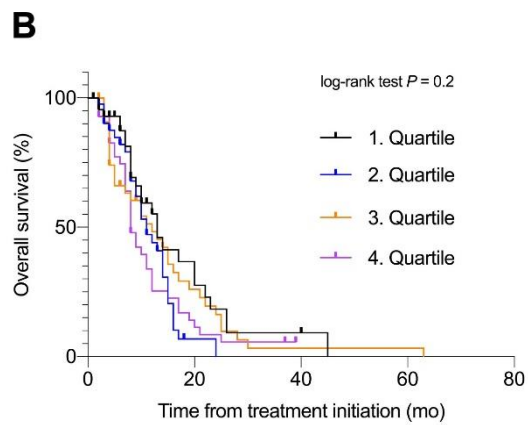
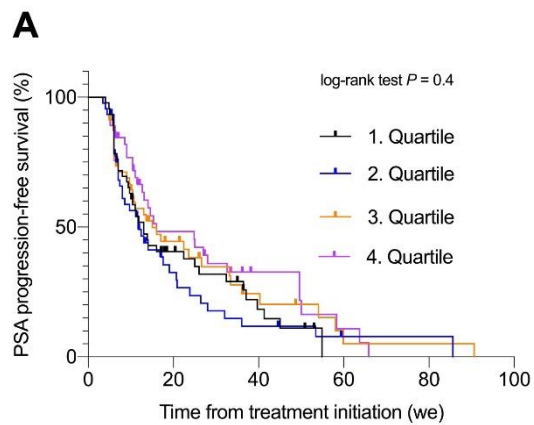


Supplemental Table 1: Uni- and multivariable analysis for the association of baseline variables with PSA-PFS

	No. of pts	Univariable analysis			Multivariable analysis		
		HR	95% CI	<i>p</i> value ^a	HR	95% CI	<i>p</i> value ^a
High scintigraphic uptake	295						
No	96	Reference					
Yes	199	0.4	0.3-0.6	<0.0001	0.3	0.2-0.5	<0.0001
Age	295	1.0	1.0-1.0	0.04	1.0	1.0-1.0	0.9
Continuous							
AP, per 50 U/l increase	295	1.0	1.0-1.1	0.04	1.0	1.0-1.1	0.3
Continuous							
LDH, per 50 U/l increase	295	1.0	1.0-1.0	0.002	1.0	1.0-1.1	0.003
Continuous							
Hb	295	1.0	0.9-1.0	0.21	1.0	0.9-1.1	0.8
Continuous							
PSA, per 50 ng/ml increase	295	1.0	1.0-1.0	0.9	1.0	1.0-1.0	0.3
Continuous							
≥2 pretreatments	295						
No	98	Reference					
Yes	197	1.6	1.2-2.1	0.003	1.4	1.0-2.1	0.1
Previous radium-223	295						
No	254	Reference					
Yes	41	0.9	0.6-1.4	0.7	0.9	0.6-1.3	0.6
Previous chemotherapy	295						
No	84	Reference					
Yes	211	1.9	1.4-2.5	0.0001	1.6	1.1-2.5	0.03
Bone metastases (M1b, without visceral metastases)	211	Reference			Reference		
Lymph node only metastases (N+/M1a)	21	0.5	0.3-0.9	0.02	0.6	0.3-1.0	0.1
Visceral metastases (M1c)	63	1.4	1.0-1.9	0.07	1.3	1.0-1.9	0.1

AP alkaline phosphatase, CI confidence interval, Hb hemoglobine, HR hazard ratio, LDH lactate dehydrogenase, PSA prostate-specific antigen

^aSignificant *p* values are given in bold



Supplemental Figure 1.