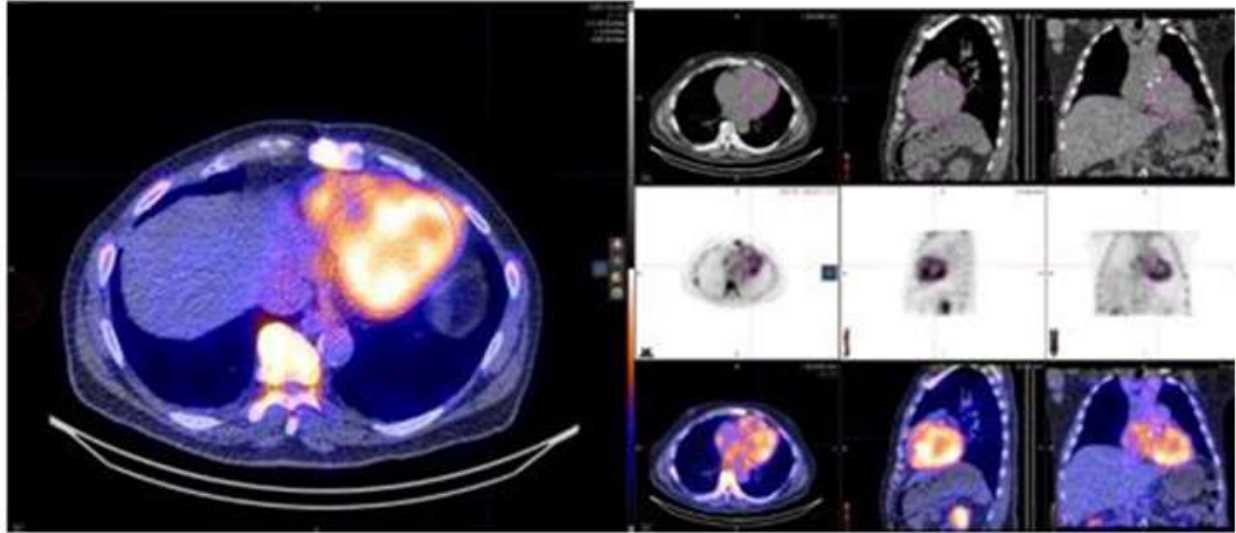


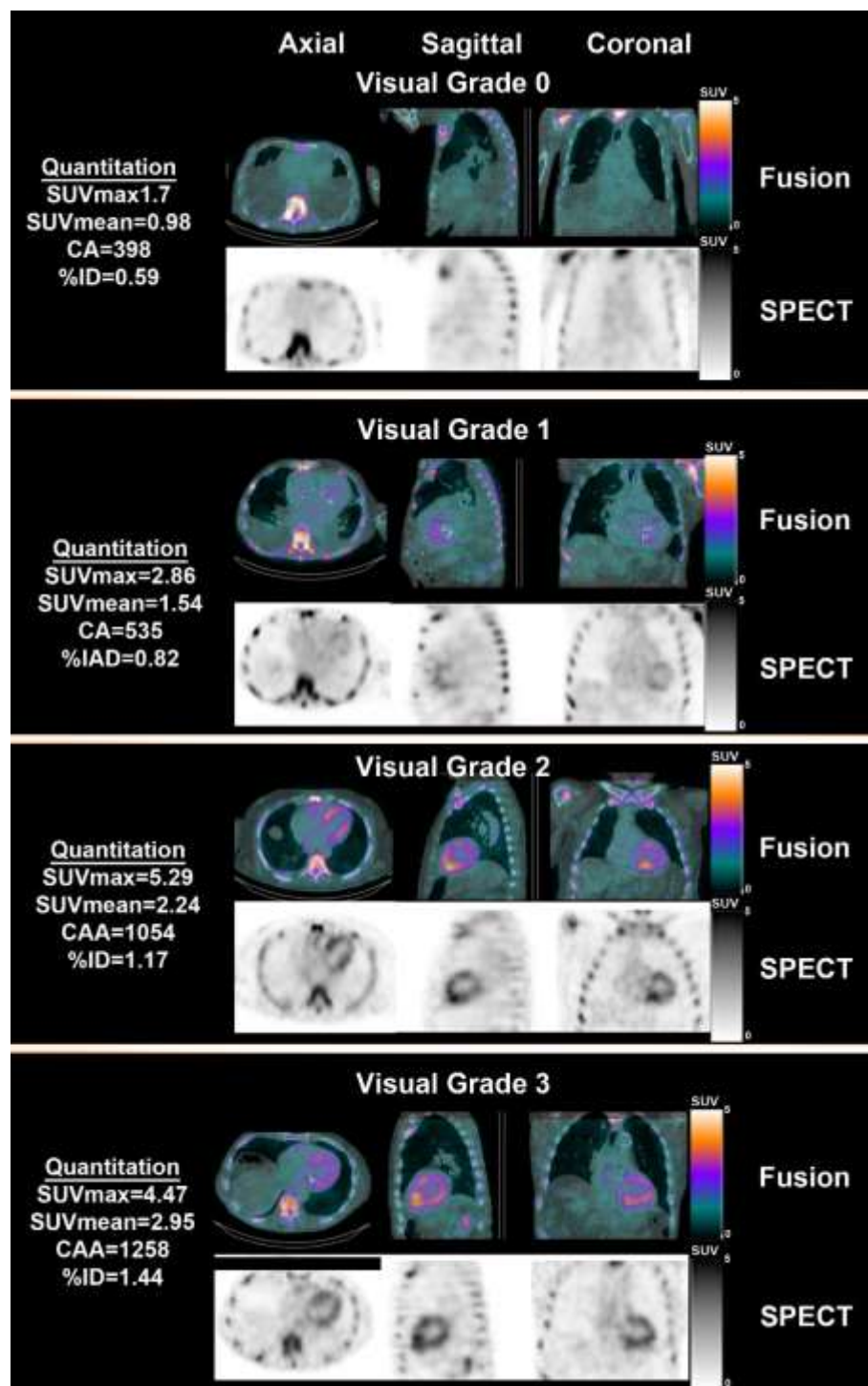
**Supplemental Table 1. Laboratory and echocardiographic features**

	<b>No-ATTR-CA (N = 49)</b>	<b>ATTR-CA (N = 23)</b>	<b>p-value</b>
<b>Laboratory</b>			
Estimated glomerular filtration rate, mL/gm/min, mean $\pm$ SD,	50.7 $\pm$ 21.0	55.8 $\pm$ 19.9	0.351
Troponin T, median (IQR), ng/mL,	36.5 (15.5-73.8)	57.0 (33-70)	0.051
NT-proBNP, median (IQR), pg/mL	1395 (291-3569)	3753 (2142-5682)	0.001
<b>Echocardiography</b>			
LV ejection fraction, mean $\pm$ SD, %	58.0 $\pm$ 10.2	51.6 $\pm$ 12.1	0.07
LV end diastolic diameter, mean $\pm$ SD, cm	4.2 $\pm$ 1.3	4.0 $\pm$ 1.0	0.351
LV end systolic diameter, mean $\pm$ SD, cm	2.9 $\pm$ 1.1	3.0 $\pm$ 1.0	0.841
Interventricular septal thickness, mean $\pm$ SD, cm	1.2 $\pm$ 0.4	1.7 $\pm$ 0.5	<0.0001
Posterior wall thickness, mean $\pm$ SD, cm	1.2 $\pm$ 0.4	1.5 $\pm$ 0.5	0.008
E, mean $\pm$ SD, m	0.9 $\pm$ 0.4	1.0 $\pm$ 0.3	0.423
A, mean $\pm$ SD, m*	0.7 $\pm$ 0.4	0.4 $\pm$ 0.3	0.01
e'lateral, mean $\pm$ SD, m	0.07 $\pm$ 0.03	0.05 $\pm$ 0.02	0.03
Tricuspid Annular Plane Systolic Excursion, mean $\pm$ SD, mm	17.0 $\pm$ 6.3	14.1 $\pm$ 4.8	0.068

NT-proBNP=N-terminal pro-brain natriuretic peptide.



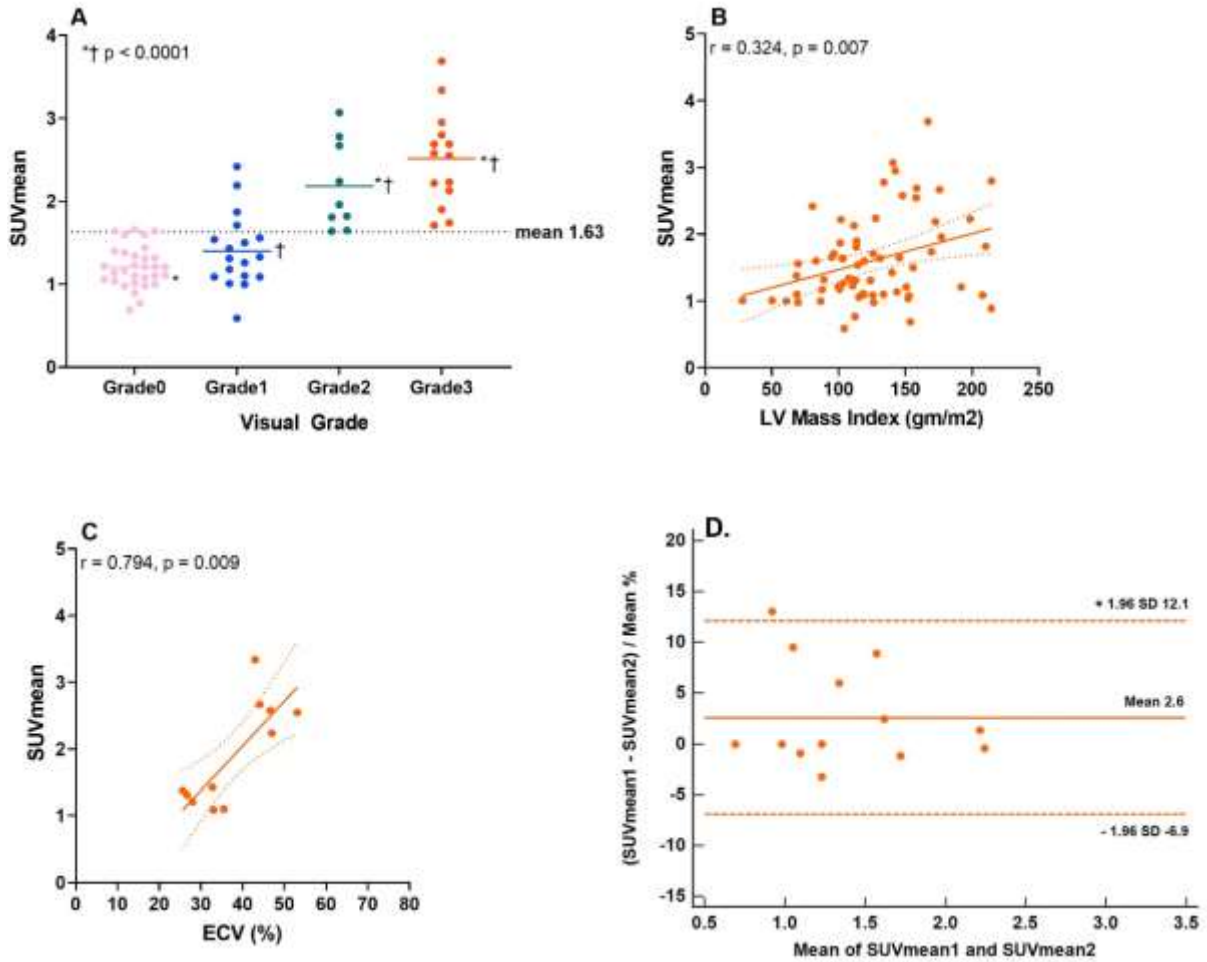
**Supplemental Figure 1:** An image illustrating the use of MIM software to define myocardial definition for SUV calculations using the cardiac borders on the CT scan to define the region of interest.



**Supplemental Figure 2:** Representative <sup>99m</sup>Tc-PYP SPECT/CT image panels showing grade 0, grade 1, grade 2 to grade 3 uptake (top to bottom panels) and coronal, axial and sagittal images (from left to right). In each panel, the top row shows attenuation corrected SPECT images and the bottom row shows SPECT/CT fusion images. On the left are listed the corresponding

SUVmax, SUVmean, CAA, and %ID values for each image. Abbreviations for this and the other figures: SUV = standardized uptake value; max = maximum; CAA = cardiac amyloid activity; ID = injected dose.

**Figure 3. Performance characteristics of SUVmean**



**Supplemental Figure 3:** <sup>99m</sup>Tc-PYP SUVmean distribution by visual grade (A), its correlation to LVMI (B), its correlation to ECV (C), and its repeatability using Bland Altman plots (D). SUVmean was similar in grade 0 and grade 1, and similar but higher in grade 2 and grade 3. Correlation to LVMI (N=67) was moderate, and correlation to ECV (N=11) was strong. Bland Altman plots show good repeatability with a CV of 3.8 %. CV = coefficient of variation; LVMI = left ventricular mass index; ECV = extracellular volume. The dotted line in (A) represents mean values for the entire study cohort, in B and C indicate standard error and in C indicates standard deviation.