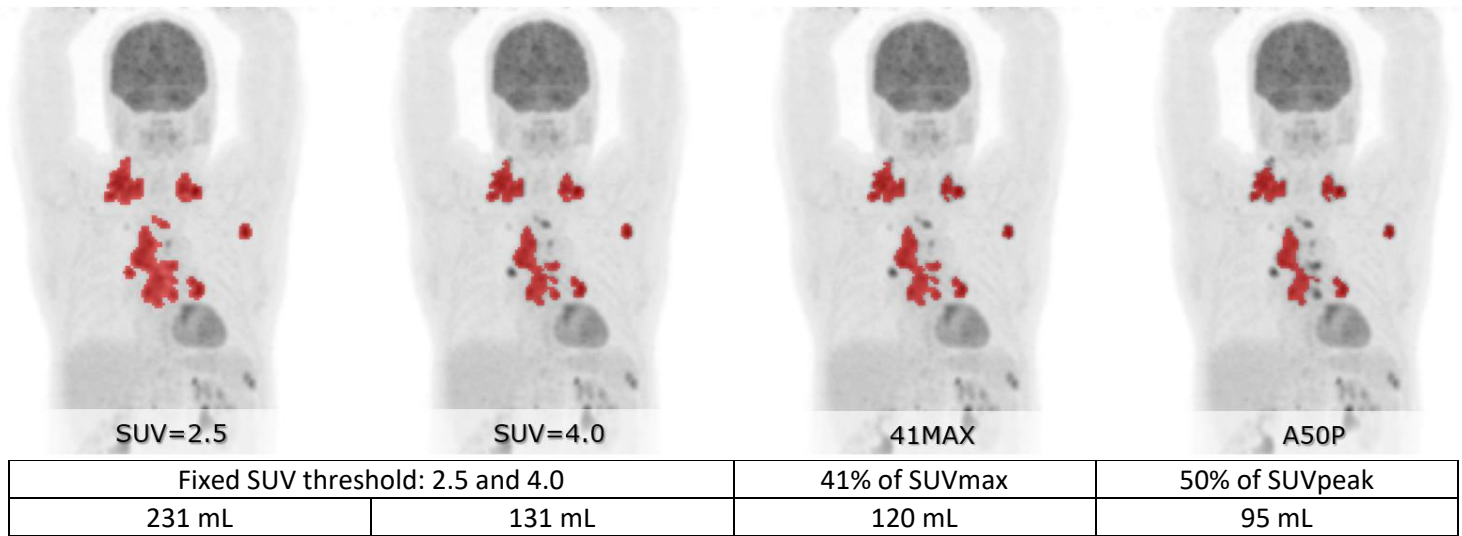
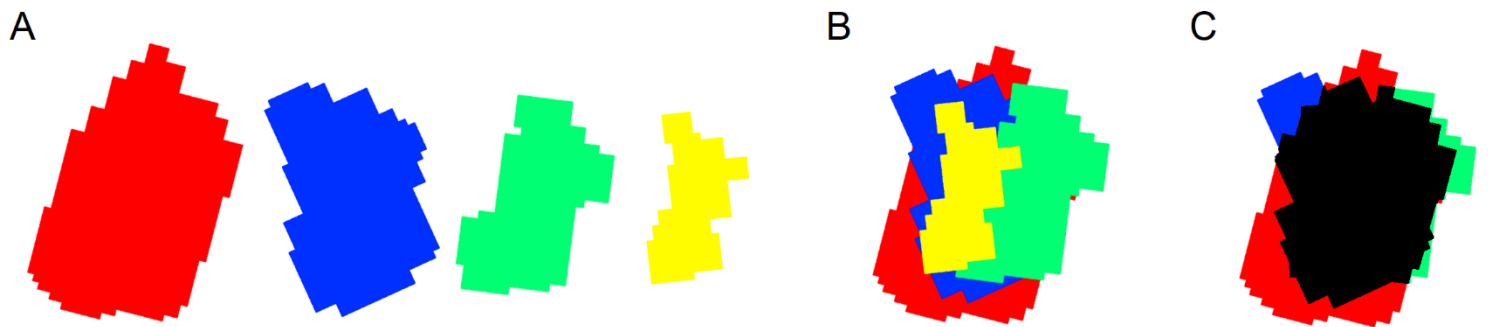


SUPPLEMENTAL



Supplemental Figure 1 – Clinical example of the segmentation performance of the four standard methods comprising the MV2 delineation method. Clear differences in the segmentation volumes can be observed (in red) for the SUV = 2.5, SUV = 4.0, 41MAX, and A50P method (from left to right).



Supplemental Figure 2 – Illustration of the four different segmentation volumes obtained from a single lesion using the four standard segmentation methods comprising the MV2 delineation method: SUV = 2.5 (red), SUV = 4.0 (blue), 41MAX (green), and A50P (yellow) (A). The MV2 method uses the different segmentations of the four methods involved and overlaps the different volumes to evaluate the agreement (B). The resulting MV2 segmentation (black) agrees between at least two of the standard delineation methods.