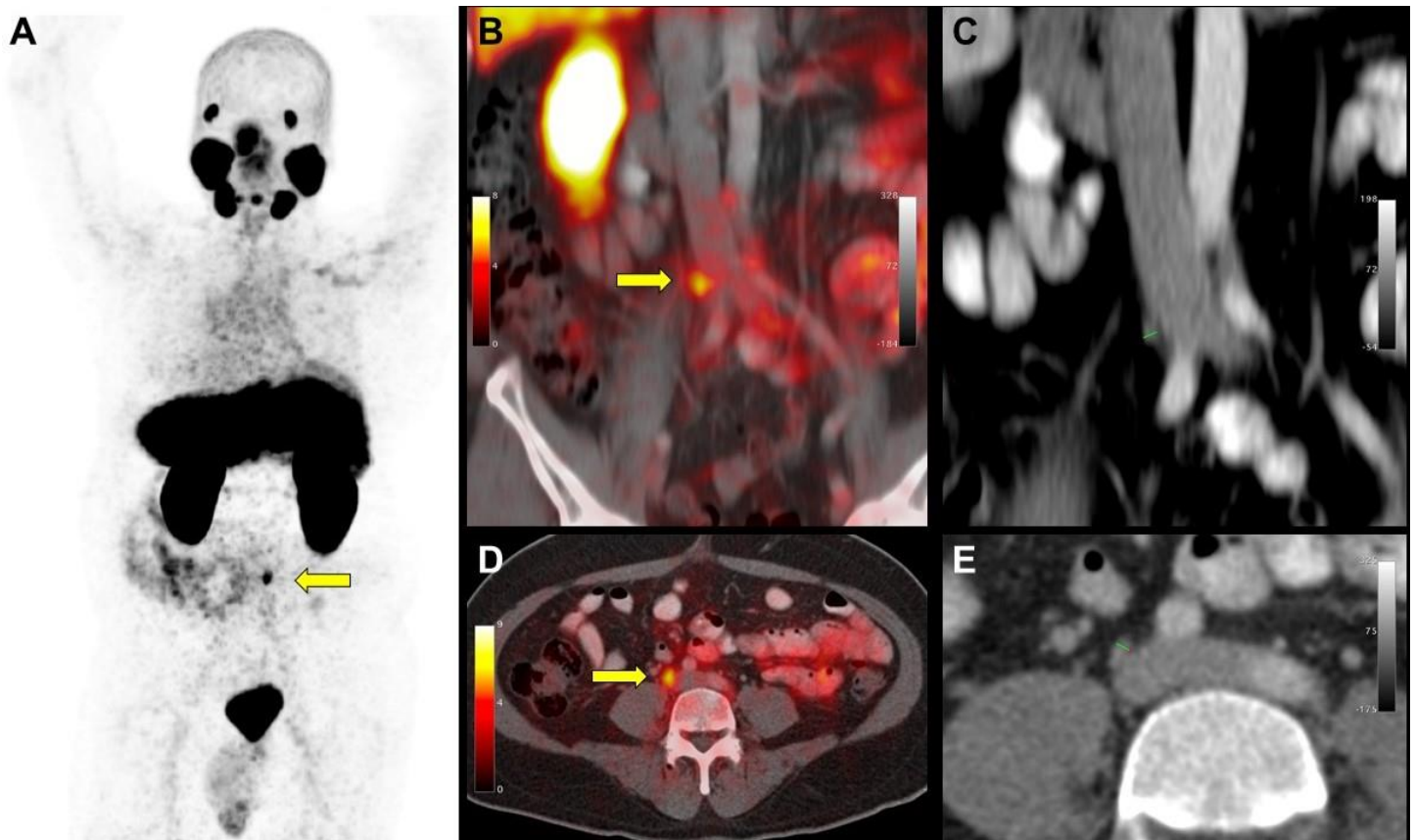


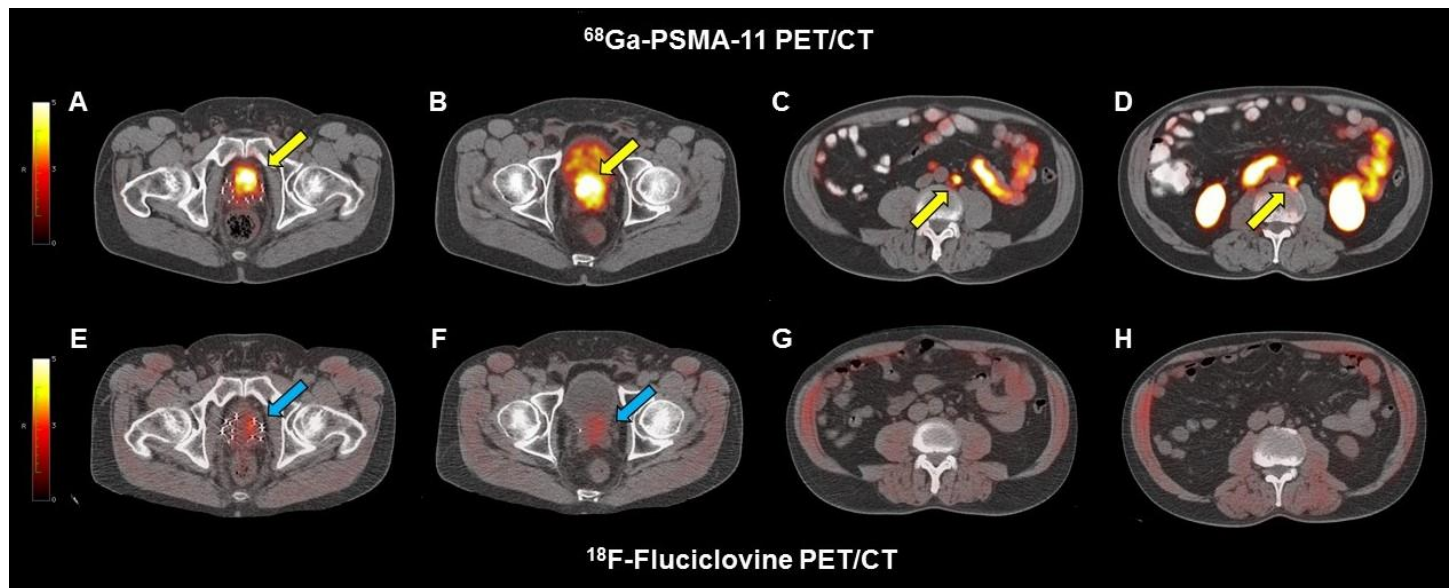
Supplemental Figure 1:



Patient #10. Patient #10 had a negative  $^{18}\text{F}$ -Fluciclovine PET/CT scan a positive  $^{68}\text{Ga}$ -PSMA-11 PET/CT. Yellow arrows show PSMA-11 uptake in a single tiny right upper common iliac LN (3 mm).

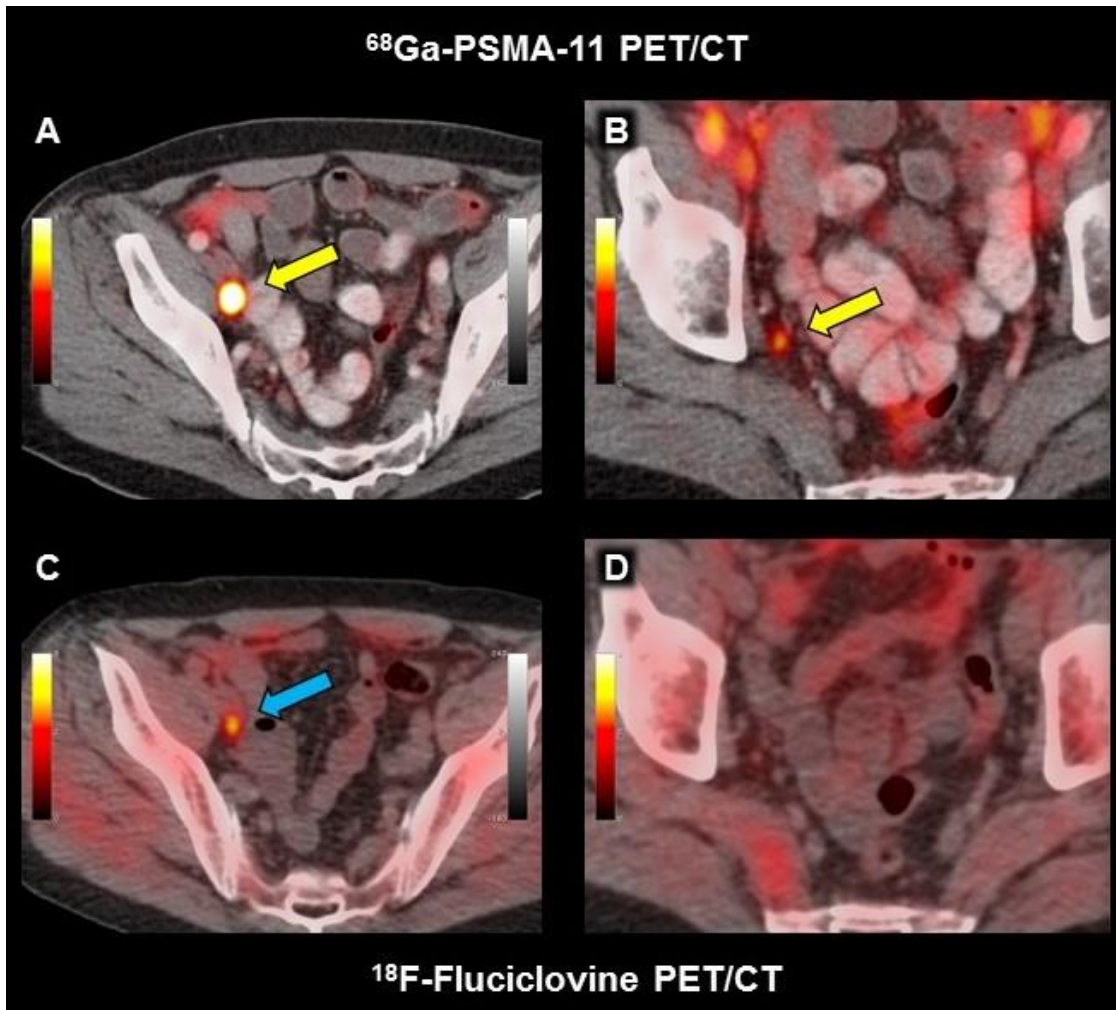
*A: Maximum Intensity Projections (MIP) of  $^{68}\text{Ga}$ -PSMA-11 PET; B: fused  $^{68}\text{Ga}$ -PSMA-11 PET/CT coronal view; C: CT coronal view; D: fused  $^{68}\text{Ga}$ -PSMA-11 PET/CT axial view; E: CT axial view.*

Supplemental Figure 2:



Patient #3 had a positive  $^{18}\text{F}$ -Fluciclovine PET/CT (bottom row) for a local recurrence only with a faint and limited uptake in the left prostate gland (E,F; blue arrows). The  $^{68}\text{Ga}$ -PSMA-11 PET/CT (top row) showed a diffuse and intense uptake in the whole prostate gland (A,B; yellow arrows) and PSMA-11 uptake in multiple extra-pelvic LN (C,D, yellow arrows). The corresponding LN showed no  $^{18}\text{F}$ -Fluciclovine uptake (G,H).

Supplemental Figure 3:



Patient #7 had a positive <sup>18</sup>F-Fluciclovine PET/CT (bottom row) for a right external iliac LN (C; blue arrows). The <sup>68</sup>Ga-PSMA-11 PET/CT (top row) showed a much intense uptake in the corresponding LN (A; yellow arrow) and PSMA-11 uptake in a tiny 4 mm right obturator LN (B, yellow arrow). The corresponding LN showed no <sup>18</sup>F-Fluciclovine uptake (D).