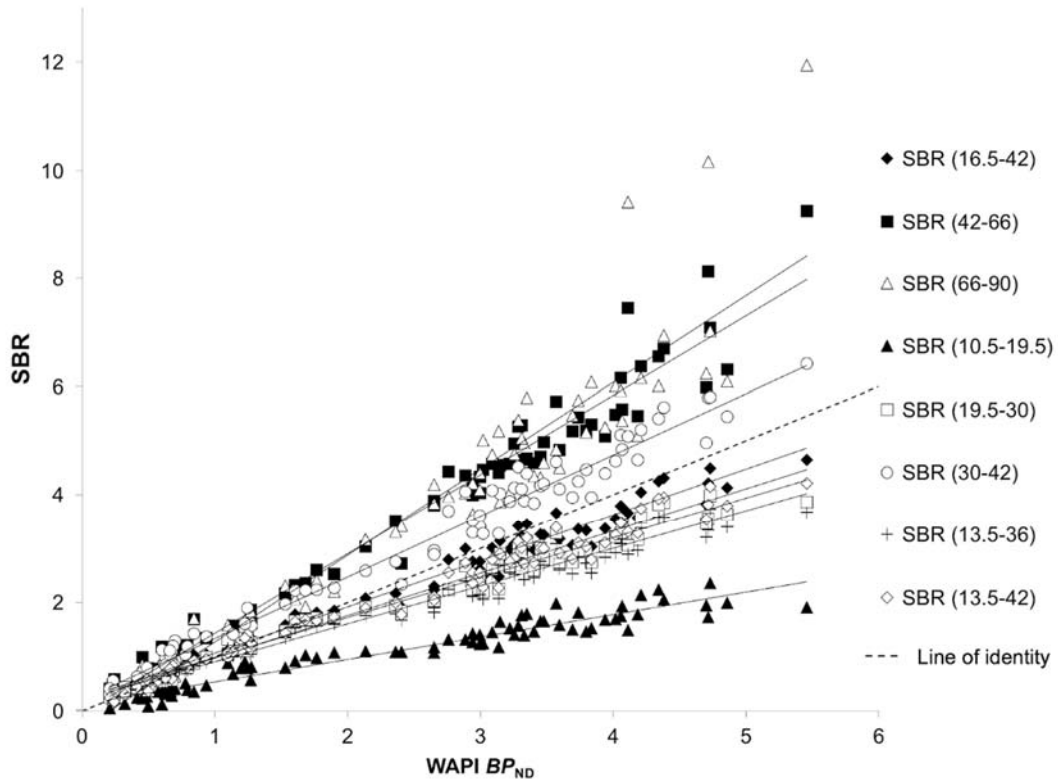
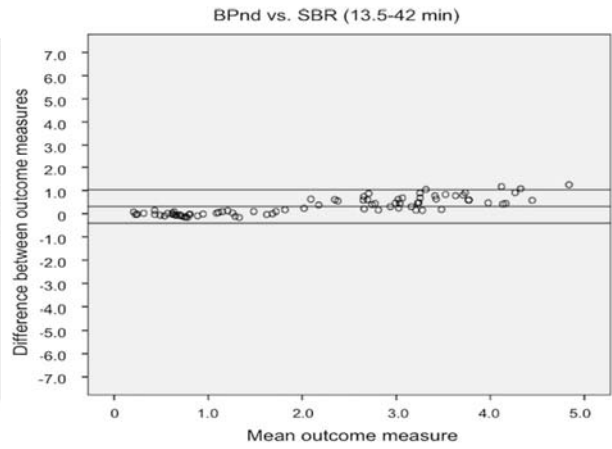
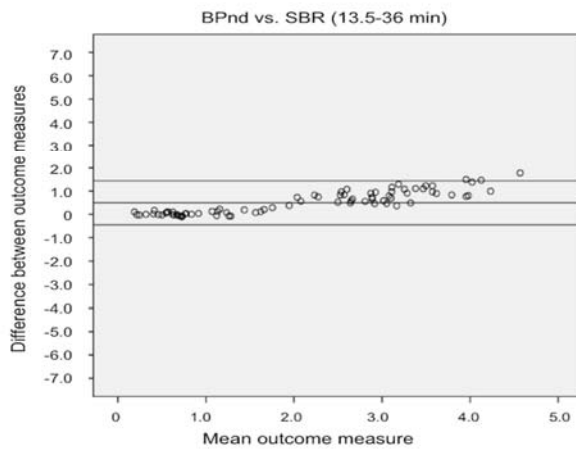
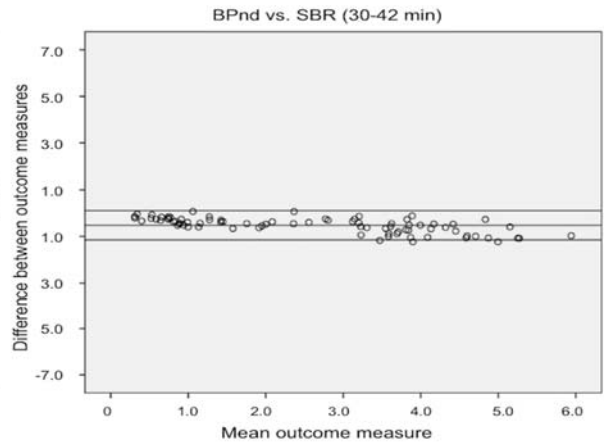
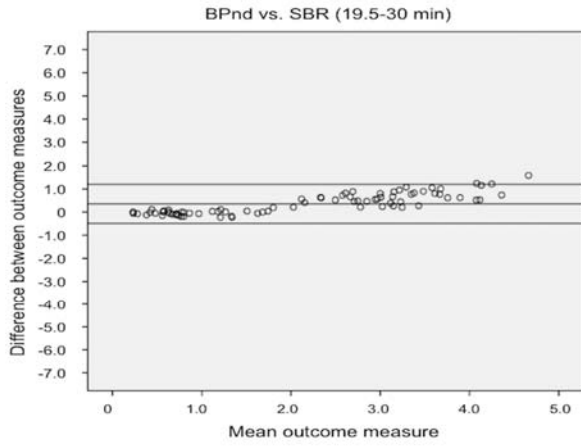
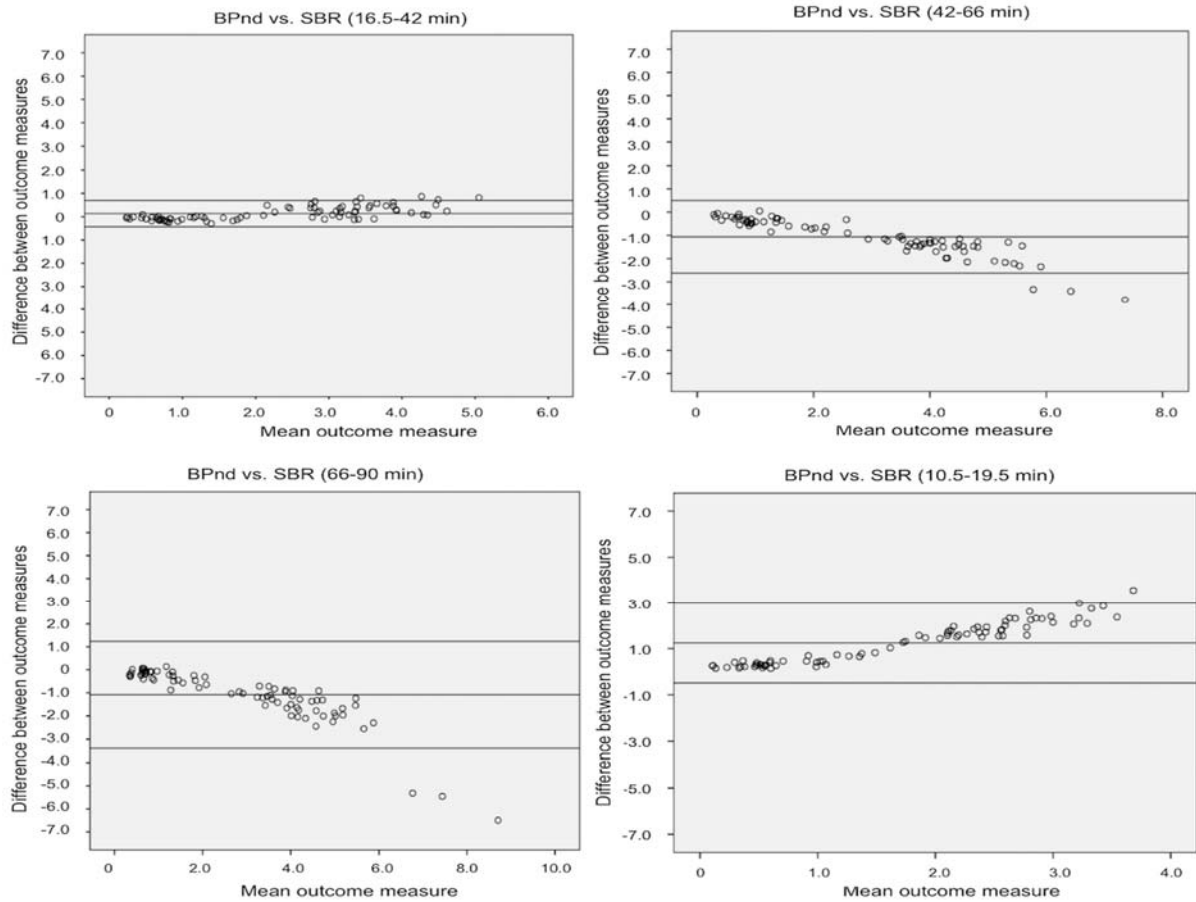


**SUPPLEMENTAL FIGURE 1.** Optimal acquisition time window selection. The average time/SUV-bound curves of PD patients (in white) and controls (in black) are displayed. VS = ventral striatum; SN = substantia nigra.

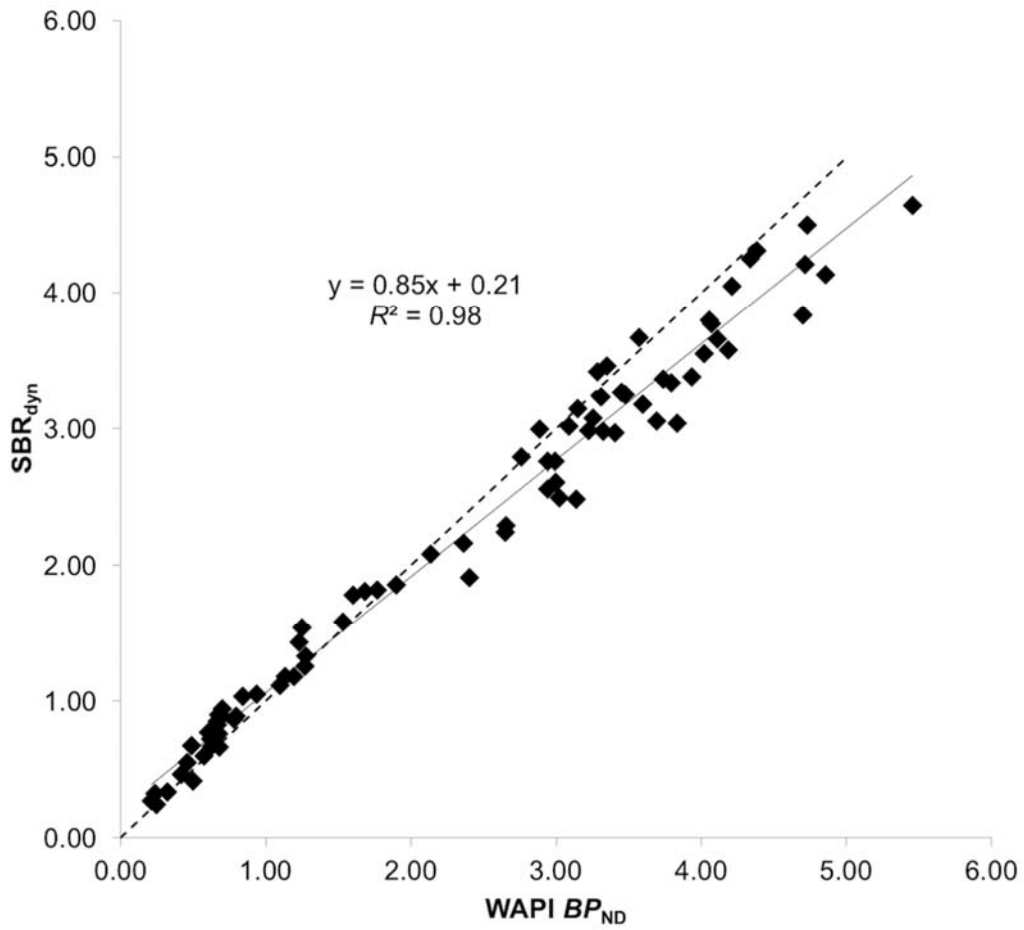


**SUPPLEMENTAL FIGURE 2.** Linear regression analysis between WAPI  $BP_{ND}$  and  $SBR_{dyn}$  for the 8 time windows examined.





**SUPPLEMENTAL FIGURE 3.** Bland-Altman plots for the 8 different time windows examined. The mean value of  $BP_{ND}$  WAPI and SBR is reported on the x-axis, whereas the difference between  $BP_{ND}$  WAPI and SBR is reported on the y-axis.



**SUPPLEMENTAL FIGURE 4.** Linear regression analysis between WAPI  $BP_{ND}$  and  $SBR_{dyn}$  for the selected time window (between min 16.5 and 42).