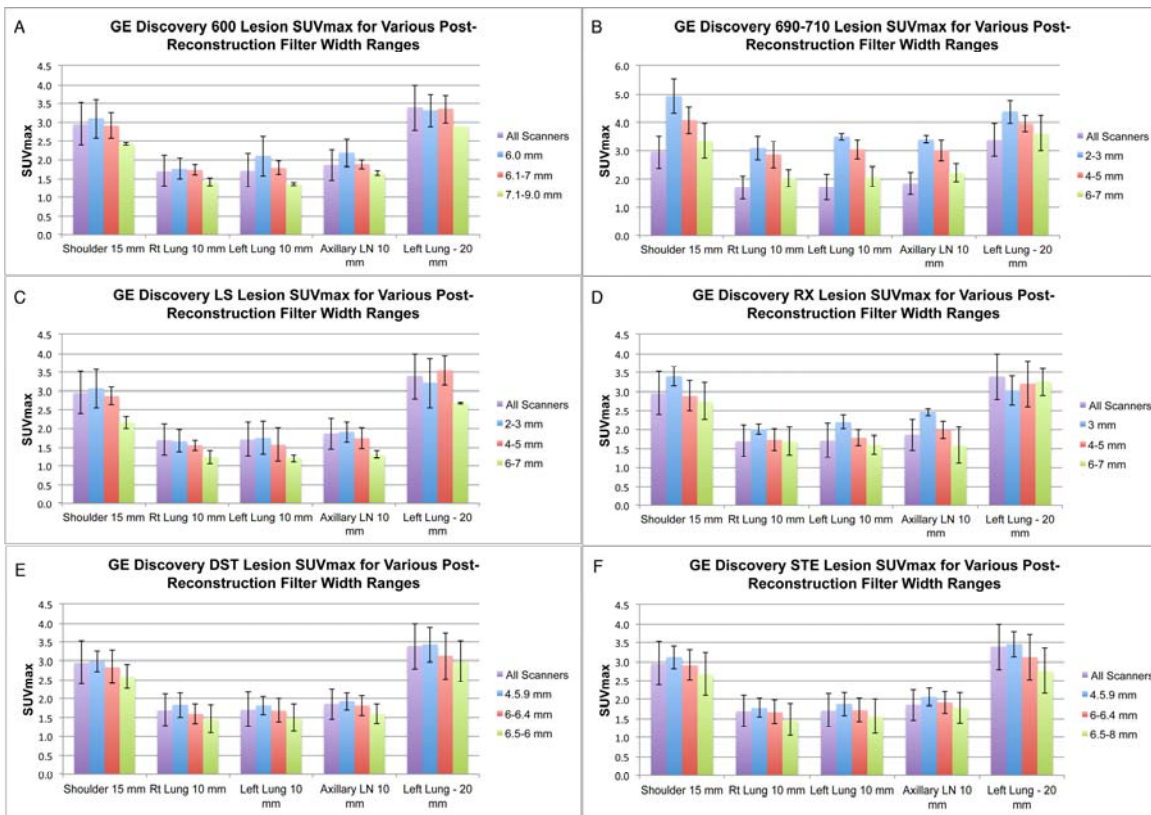
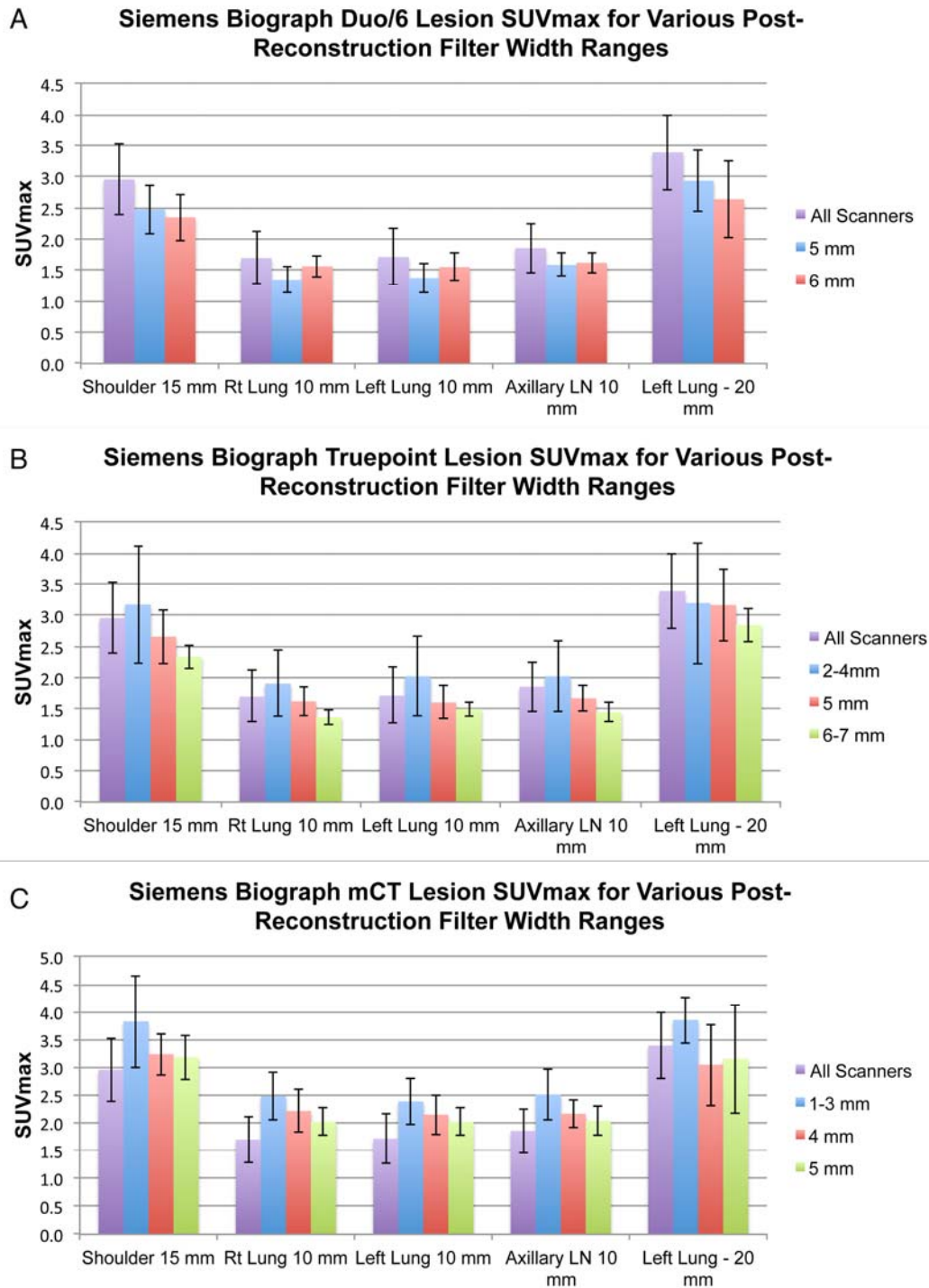


**SUPPLEMENTAL TABLE 1.** Site reported reconstruction parameters for CTN oncology phantom scans for Siemens and GE make and model PET/CT scanner. The first column reports the Gaussian smoothing filter width, iterations, and subsets. The second column is the number of phantom scans reported using that reconstruction parameter set for that scanner model. The third column is the number of unique scanners using the reconstruction parameter set for that scanner model.

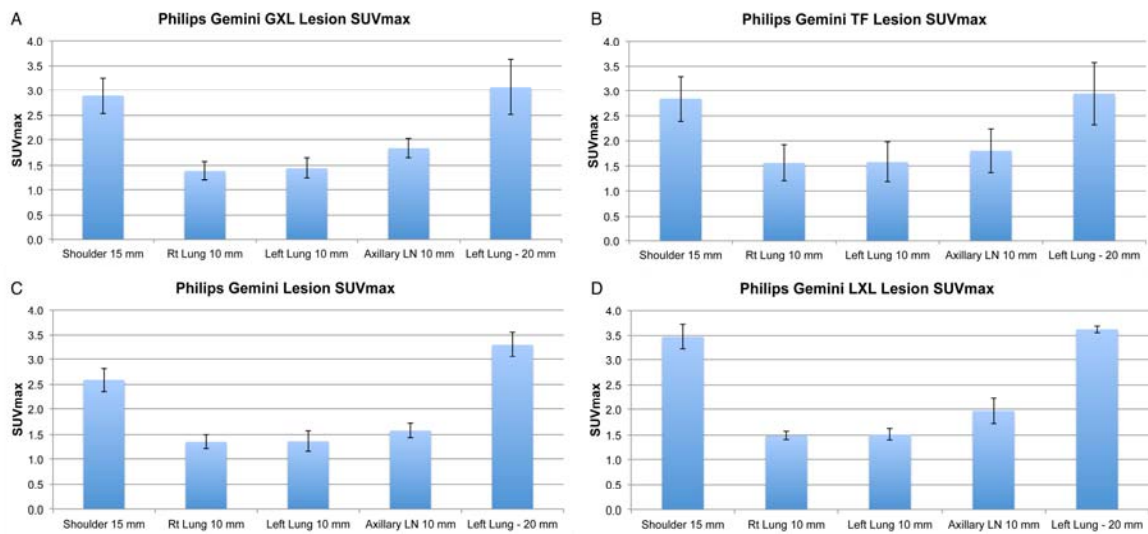
Discovery 690/710			Discovery STE			Biograph TruePoint		
4mm 3l 18S	2	1	4.29mm 2l 20S	8	4	2mm 2l 21S	2	1
4mm 3l 24S	1	1	4.71mm 2l 20S	5	1	2mm 3l 21S	1	1
4mm 4l 18S	3	1	5mm 2l 20S	1	1	3mm 2l 8S	1	1
6.4mm 2l 16S	4	3	5mm 2l 28S	5	3	3mm 2l 24S	1	1
6.4mm 2l 18S	5	1	5.14mm 2l 28S	1	1	3mm 3l 21S	1	1
6.4mm 2l 24S	17	7	5.49mm 5l 28S	1	1	4mm 2l 21S	3	2
7mm 2l 36S	1	1	5.57mm 2l 28S	2	1	4mm 3l 21S	5	3
2mm 2l 24S	2	1	6mm 2l 20S	15	9	4mm 3l 24S	1	1
4mm 4l 18S	1	1	6mm 2l 28S	6	3	4mm 4l 8S	3	2
5mm 5l 32S	1	1	6.5mm 2l 28S	1	1	5mm 2l 8S	18	5
			7mm 2l 20S	10	3	5mm 2l 14S	1	1
			7.5mm 2l 21S	1	1	5mm 2l 24S	6	3
			7.5mm 2l 28S	4	2	5mm 3l 8S	4	2
			4.29mm 2l 14S	1	1	5mm 3l 14S	1	1
			5.14mm 2l 20S	2	1	5mm 3l 21S	6	2
			6mm 2l 14S	2	1	5mm 4l 8S	16	11
			6mm 2l 21S	3	2	5mm 4l 16S	1	1
			6mm 2l 35S	3	1	5mm 5l 8S	1	1
			6.4mm 2l 20S	3	1	6mm 4l 16S	1	1
			7.55mm 2l 28S	1	1	6mm 5l 8S	1	1
			8mm 2l 14S	1	1	7mm 2l 24S	1	1
						7mm 4l 8S	7	3
						7mm 4l 25S	1	1
			Discovery RX					
			2.87mm 2l 21S	1	1			
			3mm 2l 21S	3	1	Biograph 2/6		
			5mm 2l 21S	1	1	5mm 2l 8S	14	7
			6mm 2l 21S	4	2	5mm 4l 8S	3	3
			6mm 2l 35S	4	1	6mm 2l 14S	1	1
			7mm 2l 35S	3	1	6mm 4l 8S	2	1
Discovery LS			Discovery 600			Biograph mCT		
5mm 5l 32S	2	1	6mm 2l 28S	4	1	1 mm 4i 8s	2	1
5.14mm 5l 32S	1	1	6mm 3l 32S	1	1	2mm 2i24s	2	2
5.45mm 2l 16S	1	1	6.4mm 2l 32S	4	2	2mm 3i 12s	2	1
5.45mm 2l 21S	1	1	7mm 2l 32S	3	1	2mm 3i 24s	2	2
5.45mm 2l 28S	8	5	9mm 2l 32S	2	1	2mm 4i 8s	2	1
5.45mm 5l 32S	1	1	3mm 2l 21S	3	1	3mm 2i 21s	1	1
5.57mm 2l 28S	1	1	5mm 2l 21S	1	1	4mm 2i 8s	1	1
6mm 2l 28S	4	1	6mm 2l 21S	4	2	4mm 3i 24s	4	3
7mm 2l 28S	1	1	6mm 2l 35S	4	1	4mm 4i 8s	2	1
8.5mm 4l 21S	1	1	7mm 2l 35S	3	1	4.5mm 2i 21s	2	1
10mm 2l 28S	1	1				5mm 2i 21s	1	1
						5mm 2i 24s	3	2
						5mm 2i 24s	2	1
						5mm 3i 12s	2	1
						5mm 3i 21s	2	1
						5mm 3i 24s	6	3



**SUPPLEMENTAL FIGURE 1.** Representative  $SUV_{max}$  histograms of the five spherical lesions in the CTN oncology phantom  $\geq 10$ mm for six different GE PET/CT scanner make and models. The first bar in each histogram grouping is the mean value for that lesion in all phantom studies from all scanners (all manufacturers). Subsequent histogram bars are the averages for the specified reconstruction filter width bins. A) GE Discovery 600. B) GE Discovery 690-710. C) GE Discovery LS. D) GE Discovery RX. E) GE Discovery ST. F) GE Discovery STE.



**SUPPLEMENTAL FIGURE 2.** Representative SUV<sub>max</sub> histograms of the five spherical lesions in the CTN oncology phantom  $\geq 10$ mm for three different Siemens PET/CT scanner make and models. The first bar in each histogram grouping is the mean value for that lesion in all phantom studies from all scanners (all manufacturers). Subsequent histogram bars are the averages for the specified reconstruction filter width bins. A) Siemens Biograph Duo/6. B) Siemens Biograph TruePoint. C) Siemens Biograph mCT



**SUPPLEMENTAL FIGURE 3.** Representative  $SUV_{max}$  histograms of the five spherical lesions in the CTN oncology phantom  $\geq 10$ mm for four different Philips PET/CT scanner make and models. The plots show only a single bar because reconstructions were not broken down for Philips scanners because they do not allow the user to apply a post-reconstruction filter.