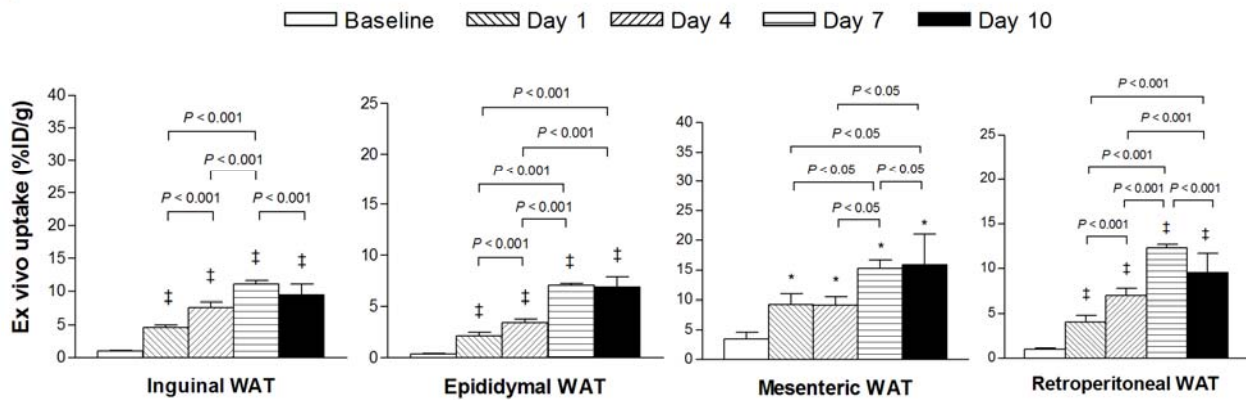
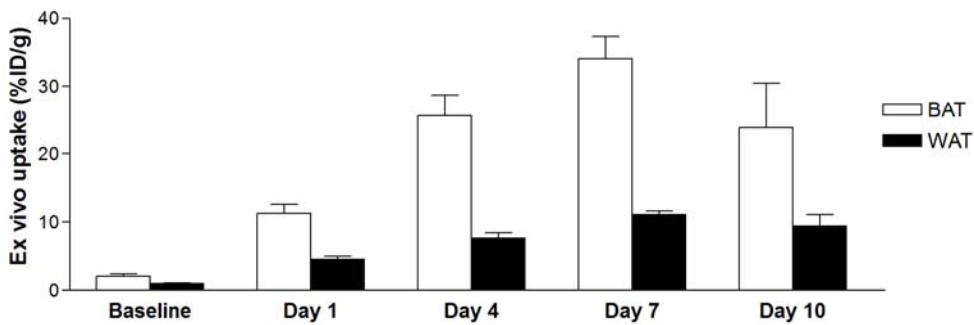


A**B**

Supplemental Figure 1. Ex vivo-measured ^{18}F -FDG uptake in WAT depots and BAT. (A and B) ^{18}F -FDG uptake of various WAT depots (A) and comparison of inguinal WAT and BAT uptake levels (B) after indicated durations of daily CL316,243 administration. Bars are mean \pm SD of %ID/g obtained from 3 or 4 animals per group. * $P < 0.05$ compared with baseline level. ‡ $P < 0.001$ compared with baseline level.