
A Model System to Explore the Detection Limits of Antibody-Based Immuno-SPECT Imaging of Exclusively Intranuclear Epitopes

Mathew Veal¹, Gemma Dias¹, Veerle Kersemans¹, Deborah Sneddon^{1,2}, Stephen Faulkner², and Bart Cornelissen¹

¹Medical Research Council Oxford Institute for Radiation Oncology, Department of Oncology, University of Oxford, Oxford, United Kingdom; and ²Department of Chemistry, University of Oxford, Oxford, United Kingdom

Imaging of intranuclear epitopes using antibodies tagged to cell-penetrating peptides has great potential given its versatility, specificity, and sensitivity. However, this process is technically challenging because of the location of the target. Previous research has demonstrated a variety of intranuclear epitopes that can be targeted with antibody-based radioimmunoconjugates. Here, we developed a controlled-expression model of nucleus-localized green fluorescent protein (GFP) to interrogate the technical limitations of intranuclear SPECT using radioimmunoconjugates, notably the lower target-abundance detection threshold. **Methods:** We stably transfected the lung adenocarcinoma cell line H1299 with an enhanced GFP (EGFP)-tagged histone 2B (H2B) and generated 4 cell lines expressing increasing levels of GFP. EGFP levels were quantified using Western blot, flow cytometry, and enzyme-linked immunosorbent assay. An anti-GFP antibody (GFP-G1) was modified using dibenzocyclooctyne-N₃-based strain-promoted azide-alkyne cycloaddition with the cell-penetrating peptide TAT (GRKKRRQRRRPPQGYG), which also includes a nuclear localization sequence, and the metal ion chelator N₃-Bn-diethylenetriamine pentaacetate (DTPA) to allow radiolabeling with ¹¹¹In. Cell uptake of ¹¹¹In-GFP-G1-TAT was evaluated across 5 cell clones expressing different levels of H2B-EGFP in vitro. Tumor uptake in xenograft-bearing mice was quantified to determine the smallest amount of target epitope that could be detected using ¹¹¹In-GFP-G1-TAT. **Results:** We generated 4 H1299 cell clones expressing different levels of H2B-EGFP (0–1 million copies per cell, including wild-type H1299 cells). GFP-G1 monoclonal antibody was produced and purified in house, and selective binding to H2B-EGFP was confirmed. The affinity (dissociation constant) of GFP-G1 was determined as 9.1 ± 3.0 nM. GFP-G1 was conjugated to TAT and DTPA. ¹¹¹In-GFP-G1-TAT uptake in H2B-EGFP-expressing cell clones correlated linearly with H2B-EGFP expression (*P* < 0.001). In vivo xenograft studies demonstrated that ¹¹¹In-GFP-G1-TAT uptake in tumor tissue correlated linearly with expression of H2B-EGFP (*P* = 0.004) and suggested a lower target-abundance detection threshold of approximately 240,000 copies per cell. **Conclusion:** Here, we present a proof-of-concept demonstration that antibody-based imaging of intranuclear targets is capable both of detecting the presence of an epitope of interest with a copy number above 240,000 copies per

cell and of determining differences in expression level above this threshold.

Key Words: molecular imaging; nuclear targeting; PET; SPECT; cell-penetrating peptide; TAT

J Nucl Med 2021; 62:1537–1544

DOI: 10.2967/jnumed.120.251173

Molecular imaging enables noninvasive characterization of biochemical features at a molecular level, performed on anything from a living cell to an entire organism (1). In parallel with other branches of personalized precision medicine, molecular imaging has become a rapidly expanding field of research, providing applications including early diagnostic tools, patient stratification, therapy guidance, and posttherapy evaluation. Nuclear imaging by PET or SPECT using radiolabeled modified antibodies, or radioimmunoconjugates, has already shown great promise in cancer imaging because of the specificity, versatility, and dependable pharmacokinetics unique to monoclonal antibodies (2). Although most research has focused on the development of monoclonal antibodies targeting extracellular epitopes on cancer cell membranes, the extracellular matrix, or epitopes shed into the interstitial space, approximately 30% of cellular proteins are localized within the nucleus, orchestrating a myriad of physiologically and pathologically relevant processes (3). The opportunity to successfully target intranuclear epitopes would significantly expand the potential applications of molecular imaging.

Without modification, antibodies are unable to cross cellular membranes because of their size (~150,000 Da) and hydrophilicity. However, these barriers can be overcome using cell-penetrating peptides (CPPs) (4). CPPs are short-length peptides (<30 residues) that have the capacity to translocate across cellular membranes (5). Since the initial discovery of the membrane transduction capacities of the HIV-derived TAT (GRKKRRQRRRPPQGYG) peptide and *Drosophila* antennapedia homeodomain protein-derived peptide (6–8), over 1,800 CPPs have been described (9). In addition, many CPPs have been experimentally validated in vitro and in vivo to facilitate the translocation of bioactive molecular cargoes of various sizes, up to 540,000 kDa, across cellular membranes, with limited toxicity (10).

Apart from serving as a CPP, the TAT peptide also contains a noncanonical nuclear localization sequence enabling nuclear translocation of its cargo. Previous research from our group and others has demonstrated that TAT-peptide-conjugated antibodies

Received Jun. 8, 2020; revision accepted Feb. 1, 2021

For correspondence or reprints, contact Bart Cornelissen (bart.cornelissen@oncology.ox.ac.uk).

Published online March 31, 2021.

Immediate Open Access: Creative Commons Attribution 4.0 International License (CC BY) allows users to share and adapt with attribution, excluding materials credited to previous publications. License: <https://creativecommons.org/licenses/by/4.0/>. Details: <http://jnm.snmjournals.org/site/misc/permission.xhtml>.

COPYRIGHT © 2021 by the Society of Nuclear Medicine and Molecular Imaging.

(IgG-TAT) can be used to image several intranuclear targets, including p21 (11), p27 (12), and the phosphorylated histone protein H2AX using both PET and SPECT (13–17). This proof-of-concept work has provided a tantalizing glimpse into the potential of IgG-TAT-based PET or SPECT imaging of intranuclear targets.

Given the unparalleled adaptability of antibodies, the range of possible imaging applications using intranuclear IgG-TAT imaging probes is substantial. However, as with all imaging modalities, fundamental limitations in sensitivity are to be expected. Therefore, determining the minimum target-epitope copy number required for antibody-based PET or SPECT imaging would be highly beneficial when novel protein markers are considered as potential targets. In vivo imaging using antibody fragments has been demonstrated with extracellular epitopes with copy numbers as low as 25,000 and 8,000 copies per cell (18,19). Intracellular epitope detection limits would be expected to be significantly higher, but a quantitative description of this limit has not yet been explored.

To determine the lower threshold of target abundance required for successful intranuclear imaging using radioimmunoconjugates, we developed a model system expressing different levels of a well-characterized, stably expressed, nucleus-localized target protein construct, histone 2B (H2B)-tagged enhanced green fluorescent protein (EGFP). This strategy removes several experimental factors that could undesirably alter target abundance, such as the potential for the probe to influence target functionality and the innate variability and temporal changeability in dosages and responses when imaging-target epitopes are induced by exogenous treatment. Removing these factors allowed for a more rigorous evaluation of the technical capabilities of antibody-based intranuclear imaging.

MATERIALS AND METHODS

Cell Culture

Human lung adenocarcinoma H1299 cells (ATCC) were cultured in Dulbecco modified Eagle medium (Sigma), supplemented with 10% fetal bovine serum (Life Technologies), 2 mM L-glutamine, 100 units/mL penicillin, and 0.1 mg/mL streptomycin and maintained in a 5% CO₂ humidified atmosphere at 37°C. Cells were tested and authenticated by the providers. The cumulative length of culture was less than 6 mo after retrieval from liquid nitrogen storage. Cells were tested for the absence of *Mycoplasma* at regular intervals. Cells stably transfected with H2B-EGFP plasmid were cultured with 50 µg/mL G418/geneticin to promote stability of transfection. Cells were harvested and passaged as required using trypsin–ethylenediaminetetraacetic acid solution.

Stable Cell Transfection and Selection

H1299 cells were seeded onto 6-well cell culture plates and allowed to attach overnight to reach 75%–90% confluency. Cells were then transfected with H2B-GFP plasmid (catalog no. 11680; Addgene) (20) using lipofectamine 3000 (Invitrogen) according to manufacturer protocols. After transfection (48 h), stably transfected cells were selected by culturing with 800 µg/mL G418 antibiotic for several passages. Cells that survived initial selection were sorted for EGFP green fluorescence and plated as individual cells using flow-assisted cell sorting (FACS Aria III; BD Biosciences) (Supplemental Fig. 1A; supplemental materials are available at <http://jnm.snmjournals.org>). Individual cell colonies were expanded under G418 selection (200 µg/mL), and H2B-EGFP expression in candidate cell lines was initially assessed qualitatively using immunofluorescence microscopy. After establishing 4 stably transfected cell lines, in addition to untransfected H1299 cells, which were used as a negative control, H2B-EGFP expression was

evaluated by Western blot, immunofluorescence microscopy, flow cytometry, and enzyme-linked immunosorbent assay (ELISA). Stability of H2B-EGFP expression in the absence of G418 was determined using flow cytometry (Supplemental Fig. 1B).

Production and Purification of GFP-G1 Monoclonal Antibody

The GFP-G1 mouse monoclonal antibody and associated hybridoma cell line were obtained from the Developmental Studies Hybridoma Bank (University of Iowa; as deposited by Joshua R. Sanes and Masahito Yamagata) (21). Hybridoma cells were initially cultured from frozen stocks in RPMI medium supplemented with 10% fetal bovine serum (Life Technologies), 2 mM L-glutamine, 100 units/mL penicillin, and 0.1 mg/mL streptomycin in a 5% CO₂ humidified atmosphere at 37°C. Once they displayed exponential growth rates, hybridoma cells were maintained in CD Hybridoma medium (Thermo Fisher Scientific) before being harvested 14 d after the final passage. Supernatant enriched with GFP-G1 antibody was clarified by centrifugation (1,400g, 10 min) and filtered through a 0.2-µm filter using a peristaltic pump before fast protein liquid chromatography purification using a HiTrap Protein G HP antibody purification column (Cytiva). Purified antibody was buffer-exchanged to phosphate-buffered saline (PBS) solution and stored at –20°C. Antibody specificity and affinity (dissociation constant) were characterized using immunofluorescence microscopy and flow cytometry.

Bioconjugation and Radiolabeling

Bioconjugation of GFP-G1 with CPP TAT and the metal ion chelating agent diethylenetriamine pentaacetate (DTPA) was achieved using strain-promoted azide–alkyne cycloaddition in a non-site-specific manner. GFP-G1 was buffer-exchanged in 0.1 M NaHCO₃ (pH 8.5), concentrated to 25 µM, and reacted with a 7-fold molar excess of dibenzocyclooctyne (DBCO)-4-sulfo-2,3,5,6-tetrafluorophenyl (Click Chemistry Tools) dissolved in dimethyl sulfoxide at room temperature for 4 h. The antibody–DBCO conjugate was purified and buffer-exchanged to PBS by centrifugal filtration using a Zeba Spin desalting column (7,000 molecular weight cutoff, 0.5 mL; Thermo Scientific). The amount of DBCO tags conjugated to the antibody was determined by absorbance spectroscopy at 280 and 309 nm, with a DBCO-to-antibody ratio of 5:1. The antibody–DBCO conjugate, at approximately 10 µM, was then reacted with a 2-fold molar equivalent relative to DBCO of 3.4 mM N₃-Bn-DTPA dissolved in PBS plus 20% dimethyl sulfoxide (Supplemental Fig. 2; the supplemental materials provide full synthesis details) and, concurrently, a 0.5-fold molar equivalent (relative to DBCO) of 1 mM azide-tagged CPP TAT-AHA (GRKKRRQRRRPPQGYG-ha(N₃)) dissolved in PBS (Cambridge Peptides) at 4°C for 12 h. The antibody conjugate was purified and buffer-exchanged to 0.5 M sodium citrate (pH 5.4) to remove unreacted products as previously described. The completion of the conjugation reaction was confirmed by the reduction of ultraviolet absorption spectrometry at 309 nm to background level.

Immunoconjugates were radiolabeled by addition of ¹¹¹InCl₃ (Perkin Elmer). Aliquots of 150 µg of IgG conjugate (1 mg/mL in 0.5 M sodium citrate, pH 5.4) were reacted with ¹¹¹InCl₃ (1 MBq/µg of antibody) in 0.5 M sodium citrate buffer, pH 5.4, for 1 h at room temperature. Radiolabeling yield was determined by instant thin-layer chromatography to be greater than 95%. The resulting radiolabeled compound, ¹¹¹In-GFP-G1-TAT, was buffer-exchanged to PBS to remove free ¹¹¹In³⁺ before subsequent studies.

In Vitro Studies

Aliquots of 8 × 10⁴ cells per well were plated in a 24-well cell culture plate and allowed to adhere for 16 h. Culture medium was removed, and cells were washed with PBS before addition of fresh

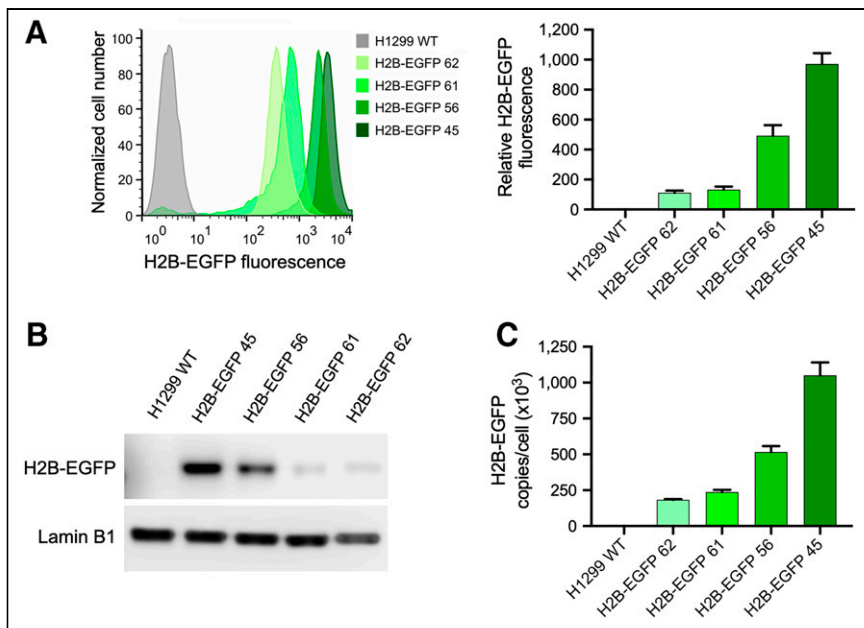


FIGURE 1. Establishment of H1299 cell lines stably transfected with H2B-EGFP. (A) Relative difference in H2B-EGFP expression across all transfected cell lines, determined by flow cytometry and presented as batch-normalized bar chart. (B) Confirmation of difference in H2B-EGFP expression across transfected cell lines using Western blot. (C) Copy number per cell of H2B-EGFP in each transfected cell line, quantified by ELISA.

culture medium containing ^{111}In -GFP-G1-TAT (1.5 nM, 1 MBq/ μg) and incubation at 37°C for a further 60 min. Supernatant containing unbound radiolabeled compound was collected; cells were washed twice with PBS and then were washed for 5 min on ice in 0.1 M glycine solution, pH 2.5, to remove membrane-bound radiolabeled

antibody conjugate. Finally, cells were lysed by addition of 0.1 M NaOH, and cell-associated compound was collected. The amount of ^{111}In within each fraction was determined by automated γ -counting (Wizard² 2480; Perkin Elmer), to calculate the percentage of cell-associated ^{111}In .

In Vivo Studies

All animal procedures were performed in accordance with the U.K. Animals (Scientific Procedures) Act of 1986 and with local ethical committee approval. Animals were housed in individually ventilated cages in sex-matched groups of up to 6 per cage in an artificial day–night cycle facility with ad libitum access to food and water. No animals were culled for welfare reasons. Xenografts of H1299 cells, wild-type (WT) or stably transfected with varying levels of H2B-EGFP, were established by subcutaneous inoculation of 10^6 cells in a 1:1 (v/v) PBS:matrigel mix, on the right flank of female BALB/c *nu/nu* mice (Envigo). After 3–4 wk, tumors reached an average size of 180 mm³ and were used for subsequent studies.

^{111}In -GFP-G1-TAT (5 MBq/5 μg) in PBS was administered to each mouse via the lateral tail vein. SPECT/CT images were acquired using a VECTOR⁴CT scanner (MILabs) at 24 and 72 h after injection. Volume-of-interest analysis on SPECT images was performed using PMOD software (PMOD Technologies). Full experimental details, reconstruction parameters, and acquisition parameters are provided in the supplemental materials (22). After imaging, mice

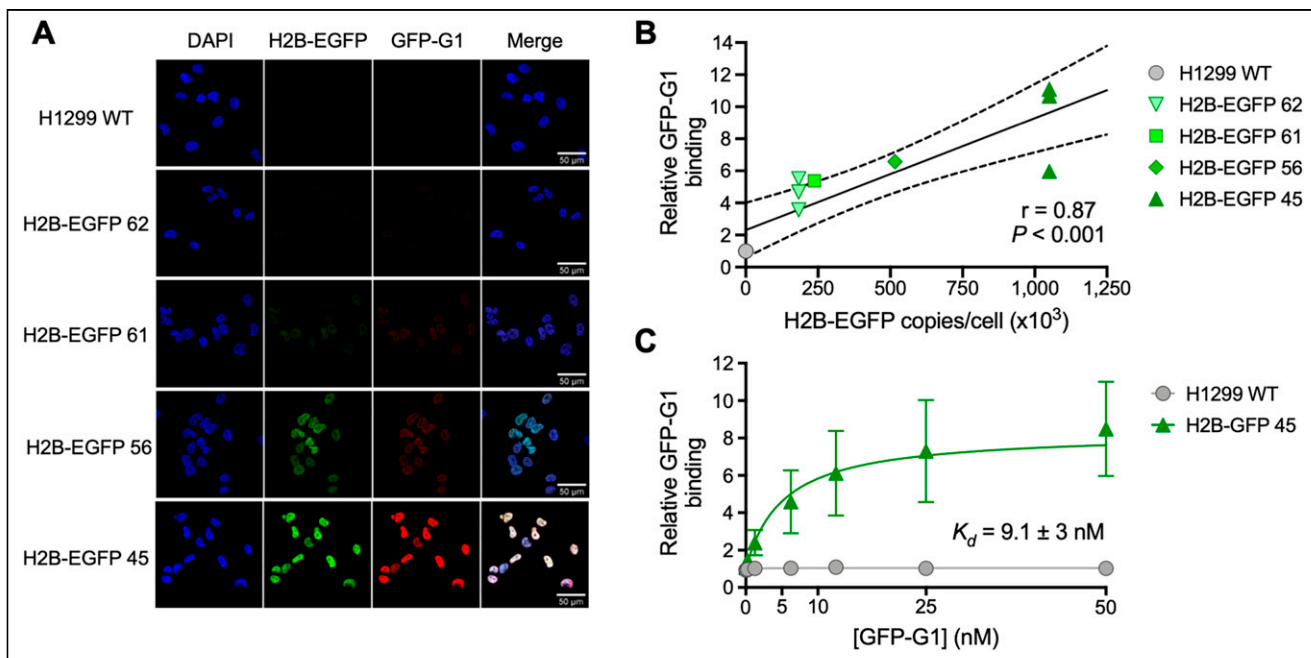


FIGURE 2. Validation and characterization of GFP-G1 monoclonal antibody. (A) Immunofluorescence microscopy showing colocalization between H2B-EGFP expression and GFP-G1 monoclonal antibody. (B) Confirmation of correlation between increasing H2B-EGFP expression and binding of monoclonal antibody GFP-G1, using flow cytometry. (C) Determination of dissociation constant of GFP-G1 with flow cytometry–based saturation binding assay.

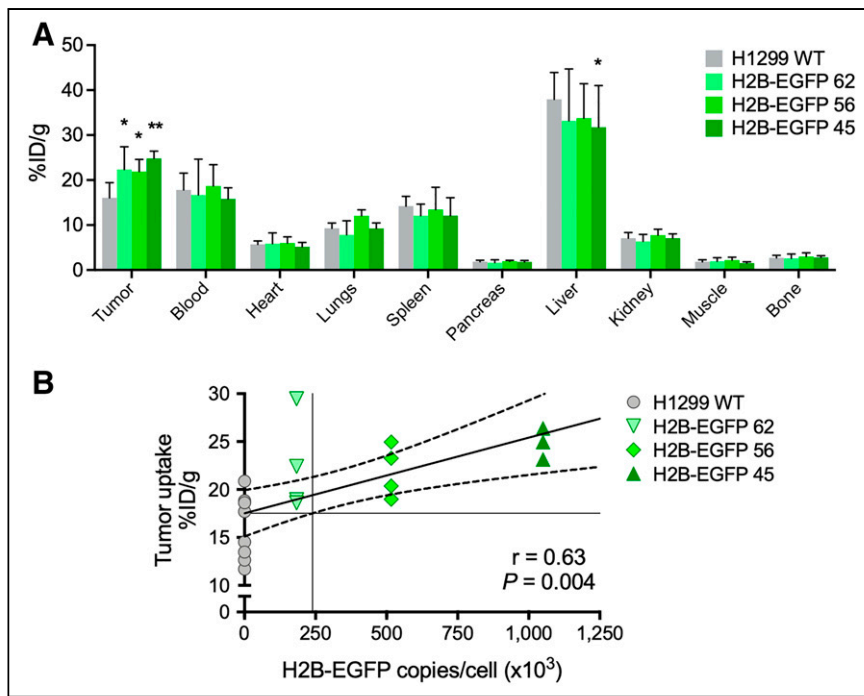


FIGURE 4. Ex vivo biodistribution and tumor uptake of ^{111}In -GFP-G1-TAT. (A) Ex vivo biodistribution showing uptake of ^{111}In -GFP-G1-TAT in selected tissues and blood, 72 h after intravenous administration. (B) Tumor uptake of ^{111}In -GFP-G1-TAT correlating linearly in vivo with expression of H2B-EGFP. Asterisks denote statistically significant differences in uptake from H1299 WT group. * $P < 0.05$. ** $P < 0.01$.

vitro uptake assays showed that ^{111}In -GFP-G1-TAT uptake in the panel of 5 cell lines correlated linearly with increasing H2B-EGFP expression (Fig. 3B, $r = 0.76$, $P < 0.001$), suggesting that uptake was the result of specific binding between ^{111}In -GFP-G1-TAT and intranuclear H2B-EGFP. In a comparison with a non-TAT modified ^{111}In -GFP-G1, using the highest H2B-EGFP-expressing H2B-EGFP 45 cell line, ^{111}In -GFP-G1-TAT showed a 6.8-fold increase in cell uptake (Supplemental Fig. 3, $P = 0.026$), demonstrating the requirement of the CPP TAT in the internalization of the imaging probe. Finally, a colony formation assay was used to determine whether the uptake of ^{111}In -GFP-G1-TAT and the subsequent radiation dose affected cell viability. In both the H1299 WT and the H2B-GFP 45 cells, there was no significant difference in colony formation among cells exposed to ^{111}In -GFP-G1-TAT, cells exposed to ^{111}In -GFP-G1 without TAT, and an untreated control group (Supplemental Fig. 4).

Tumor Uptake of ^{111}In -GFP-G1-TAT Correlates with Nuclear GFP Expression and Reveals the Detection Limit of IgG-TAT Architecture

^{111}In -GFP-G1-TAT could detect H2B-EGFP in a xenograft animal model bearing tumors consisting of H2B-EGFP 45, 56, 62, and H1299 WT cells. Ex vivo biodistribution studies revealed a statistically significant linear correlation between tumor uptake of ^{111}In -GFP-G1-TAT and expression of H2B-EGFP (Figs. 4A and 4B, $r = 0.63$, $P = 0.004$), demonstrating that ^{111}In -GFP-G1-TAT can quantitatively determine the level of H2B-EGFP expression within tumor xenografts in vivo. Interpolation of the linear regression model suggested a lower H2B-EGFP copy number threshold for detectable uptake of ^{111}In -GFP-G1-TAT of approximately 240,000 copies per

cell, which was higher than the predicted threshold in vitro (182,000 copies per cell). This was supported by the statistically significant difference in uptake between H1299 WT (16.1 ± 3.4 %ID/g) and H2B-EGFP 45 (24.8 ± 1.6 %ID/g; $P = 0.010$) and H2B-EGFP 56 (21.9 ± 2.7 %ID/g; $P = 0.033$). Interestingly, the uptake of H2B-EGFP 62 (22.4 ± 5.0 %ID/g) was also significantly higher than that of H1299 WT ($P = 0.018$), implying that the detection threshold may even be lower.

Uptake of ^{111}In -GFP-G1-TAT with increasing expression of H2B-EGFP was also demonstrated visually by SPECT/CT imaging (Fig. 5). Image quantification of uptake again showed a correlation between uptake and expression of H2B-EGFP at both 24 h ($r = 0.66$, $P = 0.010$) and 72 h ($r = 0.68$, $P = 0.002$) after intravenous administration (Figs. 6A and 6B). At 24 h after administration, interpolation of the linear regression model suggested a lower detection threshold of 316,000. However, SPECT images at 72 h after administration suggested a lower detection threshold of 237,000 copies per cell, which reflected the results obtained with the biodistribution study.

DISCUSSION

Antibody-based or antibody fragment-based immuno-PET or SPECT imaging is a rapidly growing field, with an increasingly broad selection of radioisotopes to use along with a repertoire of highly sensitive and selective antibody-based and antibody fragment-based vector systems that can be optimized for specific applications. The effectiveness of any antibody-based imaging probe can be reduced to 3 central factors (24). The first factor is target abundance, which must be suitably high to allow its detection within the tissue of interest. Second, the targeting component of the radioimmunoconjugate, whether an antibody or antibody fragment, must bind exclusively to the epitope, with high affinity. Finally, the radioimmunoconjugate must exhibit the pharmacokinetic and clearance characteristics in vivo that will allow it to develop a contrast with nontarget tissues. In this study, we used a stable transfection reporter system to investigate the consequence of decreasing target abundance on radioimmunoconjugate detection and imaging capacity.

We chose H2B-EGFP as a model target protein because it is a well-characterized recombinant nucleus-localized protein expression system that is capable of stable transfection (20,25). In vitro assays demonstrated that ^{111}In -GFP-G1-TAT uptake correlated with the expression level of H2B-EGFP, with a predicted minimum detection threshold limit of approximately 182,000 copies per cell. Other reports, relying on quantitative mass spectrometry in U2OS and He-La cells, showed that up to a fifth of all nuclear proteins are expressed to this level and thus may be visualized using a TAT-conjugated suitable antibody, although this analysis does not include pharmacologically or pathologically induced expression or

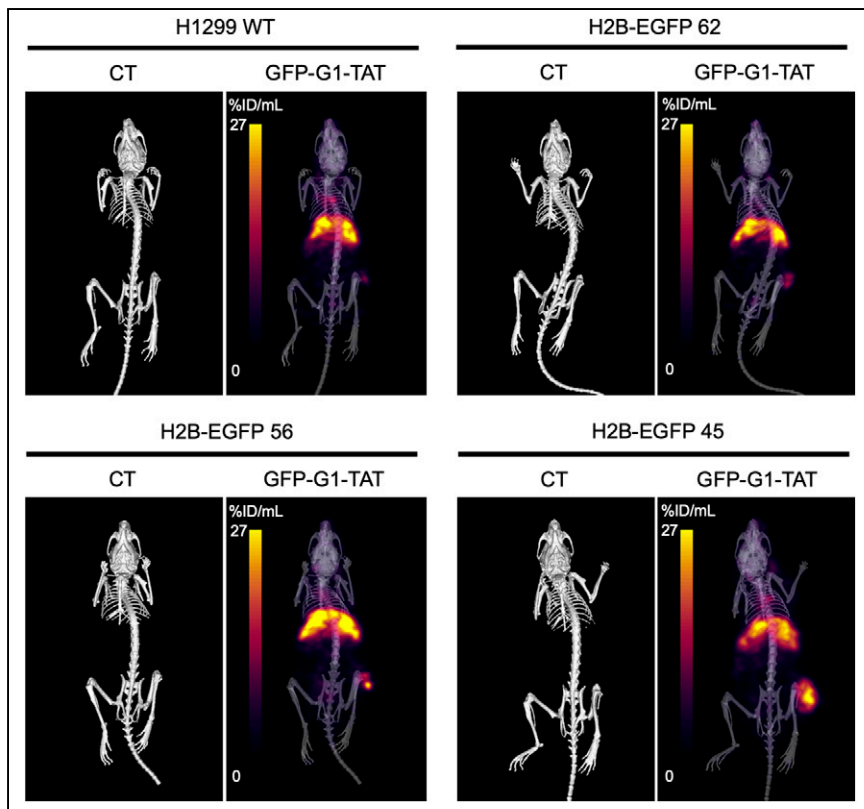


FIGURE 5. Imaging of ^{111}In -GFP-G1-TAT in vivo. Representative CT and SPECT images show distribution of ^{111}In -GFP-G1-TAT in mice bearing H2B-EGFP-transfected H1299 cells, 72 h after intravenous administration.

overexpression of proteins (26,27). The relatively small increase in ^{111}In -GFP-G1-TAT uptake between H1299 WT and H2B-EGFP-expressing cells in vitro was indicative of high levels of non-specific uptake, possibly as a result of modification with the TAT peptide. However, this system can be used to optimize a multitude of factors to increase specific radioimmunoconjugate uptake, potentially lowering the effective detection threshold and improving the target-abundance resolution of IgG-TAT-based imaging compounds.

The basis of an effective radioimmunoconjugate imaging probe is a highly selective and sensitive antibody or fragment. We selected the GFP-G1 monoclonal antibody because there was a readily available and validated hybridoma cell line (21,23) allowing for production and purification on a scale suitable for bioconjugation and subsequent radioassays. Flow cytometry and immunofluorescence microscopy confirmed that GFP-G1 was highly specific and showed good affinity (dissociation constant, 9.1 ± 3.0 nM), comparable to clinically approved antibodies such as trastuzumab (5.0 nM) (28). However, it should be noted that highly optimized antibodies or antibody-based constructs are capable of affinities in the subpicomolar range (29). An important consideration for future research is whether an antibody with greater affinity could improve the detection threshold and resolution by reducing the signal-to-noise ratio.

The conjugation of functional groups, such as TAT and DTPA, can considerably alter the characteristics of a radioimmunoconjugate. At the cellular level, the addition of TAT facilitates the transport of the radioimmunoconjugate across the cellular membrane. However, because of the highly cationic nature of TAT, TAT-

modified radioimmunoconjugates can result in significant increases in non-specific binding. One of the primary factors that could control the detection threshold and degree of nonspecific uptake is the mechanism of IgG-TAT internalization into cells. CPPs have been shown to facilitate the internalization of wide array of cargo proteins, which is believed to be largely driven by endocytosis under physiologic conditions (30). However, because of the complex array of CPPs and CPP-cargo combinations (31), attempts to establish the principal endocytic mechanisms involved have proved ambiguous, suggesting that CPPs can use distinct endocytic pathways. One major factor governing the efficiency of internalization under physiologic conditions is the molecular mass of the cargo protein cargo size (32). Larger cargo proteins, such as whole antibodies, are internalized at significantly lower efficiencies than small cargo proteins, potentially caused by induction of alternative cell internalization mechanisms (31,33,34).

Another major challenge facing CPP-mediated intranuclear imaging is non-specific uptake due to endosomal entrapment, resulting in high cellular uptake but poor cytosolic availability and subsequent target engagement. The recent development of cyclic derivatives of TAT and poly-arginine CPPs has demonstrated not only dramatic increases in cell uptake of cargo proteins (35) but also significantly improved cytosolic availability in comparison to the linear CPPs (36). This model system provides an excellent opportunity to investigate the effects of such optimizations for specific cellular uptake of targeted radioimmunoconjugates.

Finally, the choice of chelating agent and radioisotope can also affect the sensitivity and degree of nonspecific tumor uptake. Because the principal objective of this study was to investigate the biodistribution and pharmacokinetic properties of an IgG-TAT radioimmunoconjugate, DTPA was used to chelate ^{111}In for simplicity of radiolabeling and to maintain consistency with previous research using TAT-antibody imaging agents. Radiometal-chelate stability is important when using a nucleus-targeted radioimmunoconjugate, so as to prevent nonspecific sequestration of the radiometal and limit subsequent off-target radiation dose, especially when working with an Auger electron-emitting isotope, such as ^{111}In (37). Alternative chelating agents—for instance, CHX-A''-DTPA—have greater stability in vivo and therefore could be used to chelate ^{111}In (38). For clinical use, PET has several advantages over SPECT, including greater sensitivity, easier scatter correction, and capacity to provide quantitative results (39). Therefore, to increase the potential for clinical translation, future research will be focused on combining this technology with long-half-life PET isotopes, such as ^{89}Zr , in conjunction with a suitable chelating agent, such as desferrioxamine B.

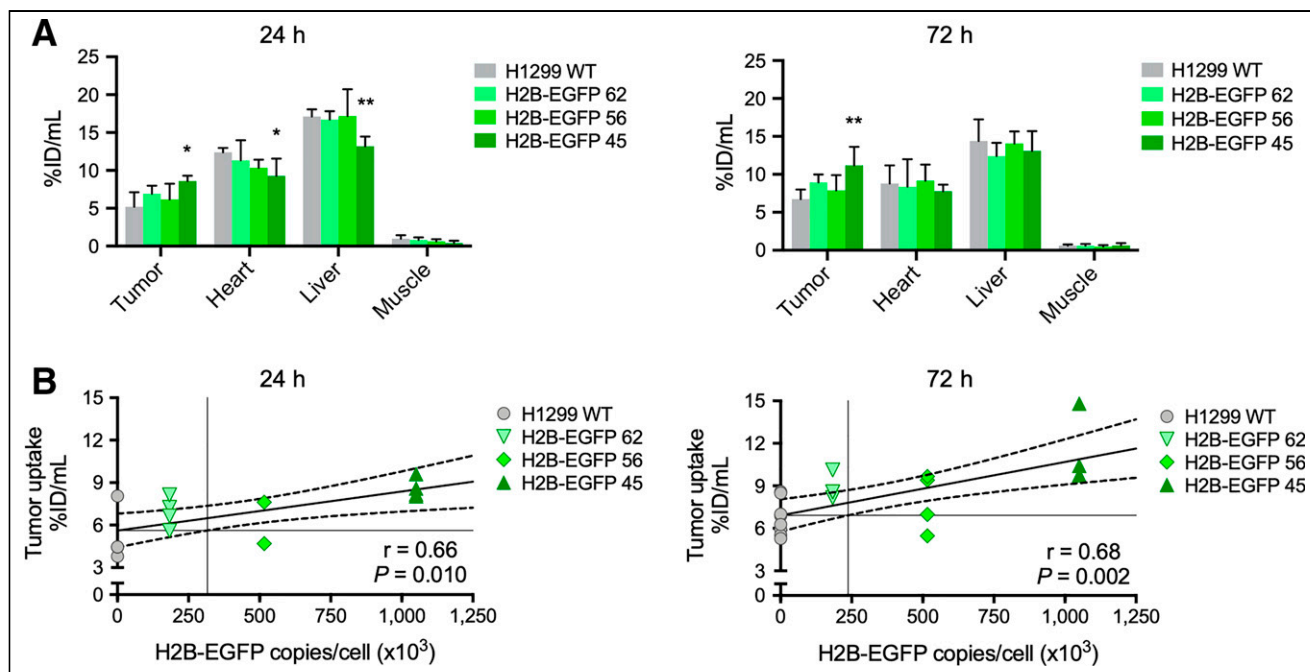


FIGURE 6. Image quantification analysis of ^{111}In -GFP-G1-TAT biodistribution in vivo. (A) Image quantification analysis showing uptake of ^{111}In -GFP-G1-TAT in selected tissues, 24 and 72 h after intravenous administration. (B) Correlation of quantified tumor uptake with expression of H2B-EGFP, 24 and 72 h after intravenous administration. Asterisks denote statistically significant differences in uptake from H1299 WT group. * $P < 0.05$. ** $P < 0.01$. *** $P < 0.001$.

In vivo, both biodistribution and quantitative image analysis indicated that the minimum detection threshold was 240,000 copies per cell, which was predictably higher than the threshold obtained from in vitro studies. The reason for the higher observed threshold in vivo may be attributed to increased nonspecific tumor uptake as a result of the enhanced permeability and retention effect and blood background signal, presenting an additional source of nonspecific signal (40). This effect is exacerbated not only by the molecular mass of IgG-TAT-based imaging probes but also by the presence of a functional Fc domain, which promotes extended blood uptake through FcRn-mediated recycling (41). In comparison, smaller antibody fragment-based radioimmunoconjugates without a functional Fc domain show a rapid reduction in blood uptake through the renal clearance pathway and lack of FcRn-mediated recycling, potentially reducing nonspecific uptake. Using ^{111}In -GFP-G1-TAT-derived smaller antibody fragments may improve sensitivity both in vitro and in vivo. EGFP-targeted imaging is an ideal platform for the evaluation of such optimizations to radioimmunoconjugates.

This work was aimed at guiding research into evaluation of novel intracellular or intranuclear imaging targets. In the context of previous antibody-based PET or SPECT imaging, γH2AX is probably the most documented and has an approximate cell abundance of 800,000 copies per cell at maximum, in an irradiated cell (17), depending on several factors such as cell line and extent of DNA damage before administration of the tracer. Expression levels of proteins we targeted before, such as p21 and p27 levels, may be below the threshold we determined here for GFP. Approximations for these proteins may range from 10^4 to 10^5 copies per cell at baseline in normal tissue (27),

although few quantitative data are available and levels will oscillate throughout the cell cycle. Although, in this piece of research, we calculated a lower detection limit of approximately 2.4×10^5 copies per cell, we acknowledge that this value is specific to this simplified model system and cannot be treated as an absolute. Therefore, when considering potential candidates for imaging, it is important to take into account the myriad of factors that can influence the lower detection threshold, such as radioimmunoconjugate affinity, CPP selection, and variation in target expression levels and subcellular location. This model system, however, is an endeavor to establish an approximate baseline, and subsequent research will exploit variations of this model to investigate the impact of these factors on the detection capacity of antibody-based or antibody fragment-based intracellular imaging.

CONCLUSION

This study presents a proof-of-concept methodology set out to evaluate, quantitatively, the practical limitations of antibody-based intranuclear immuno-PET or SPECT imaging. We confirmed the current capacity of imaging an intranuclear epitope with a TAT-conjugated intact antibody. This framework could in the future be used to methodically isolate, interrogate, and optimize a variety of factors that define the efficacy of antibody-based imaging devices, potentially leading to the development of more powerful whole-body immunoimaging devices.

DISCLOSURE

MRC and CRUK provided financial support through grants MC_ST_OIRO_2019 and 23970, respectively. No other potential conflict of interest relevant to this article was reported

KEY POINTS

QUESTION: What is the lowest detection threshold for successful imaging of an intranuclear epitope using IgG-TAT-based radioimmunoconjugates?

PERTINENT FINDINGS: We developed a model system to test, and improve, the lower target-abundance threshold using IgG-TAT-based PET or SPECT imaging, revealing a current lower detection limit of 180,000 copies per cell in vitro, and 240,000 copies per cell in vivo.

IMPLICATIONS FOR PATIENT CARE: This model system can be used to evaluate and improve intranuclear PET or SPECT imaging, with great potential for the development of a range of clinical applications not currently possible.

REFERENCES

- James ML, Gambhir SS. A molecular imaging primer: modalities, imaging agents, and applications. *Physiol Rev*. 2012;92:897–965.
- Freise AC, Wu AM. In vivo imaging with antibodies and engineered fragments. *Mol Immunol*. 2015;67:142–152.
- Shaiken TE, Opekun AR. Dissecting the cell to nucleus, perinucleus and cytosol. *Sci Rep*. 2014;4:4923.
- Guidotti G, Brambilla L, Rossi D. Cell-penetrating peptides: from basic research to clinics. *Trends Pharmacol Sci*. 2017;38:406–424.
- Ye J, Liu E, Yu Z, et al. CPP-assisted intracellular drug delivery, what is next? *Int J Mol Sci*. 2016;17:1892.
- Frankel AD, Pabo CO. Cellular uptake of the tat protein from human immunodeficiency virus. *Cell*. 1988;55:1189–1193.
- Green M, Loewenstein PM. Autonomous functional domains of chemically synthesized human immunodeficiency virus tat trans-activator protein. *Cell*. 1988;55:1179–1188.
- Joliot A, Pernelle C, Deagostini-Bazin H, Prochiantz A. Antennapedia homeobox peptide regulates neural morphogenesis. *Proc Natl Acad Sci USA*. 1991;88:1864–1868.
- Agrawal P, Bhalla S, Usmani SS, et al. CPPsite 2.0: a repository of experimentally validated cell-penetrating peptides. *Nucleic Acids Res*. 2016;44:D1098–D1103.
- Keller AA, Mussbach F, Breiting R, et al. Relationships between cargo, cell penetrating peptides and cell type for uptake of non-covalent complexes into live cells. *Pharmaceuticals (Basel)*. 2013;6:184–203.
- Hu M, Chen P, Wang J, Scollard DA, Vallis KA, Reilly RM. ¹²⁵I-labeled HIV-1 tat peptide radioimmunoconjugates are imported into the nucleus of human breast cancer cells and functionally interact in vitro and in vivo with the cyclin-dependent kinase inhibitor, p21(WAF-1/Cip-1). *Eur J Nucl Med Mol Imaging*. 2007;34:368–377.
- Cornelissen B, Kersemans V, McLarty K, Tran L, Vallis KA, Reilly RM. In vivo monitoring of intranuclear p27(kip1) protein expression in breast cancer cells during trastuzumab (Herceptin) therapy. *Nucl Med Biol*. 2009;36:811–819.
- Cornelissen B, Able S, Kartsonaki C, et al. Imaging DNA damage allows detection of preneoplasia in the BALB-neuT model of breast cancer. *J Nucl Med*. 2014;55:2026–2031.
- Knight JC, Mosley MJ, Bravo LC, et al. ⁸⁹Zr-anti-gammaH2AX-TAT but not ¹⁸F-FDG allows early monitoring of response to chemotherapy in a mouse model of pancreatic ductal adenocarcinoma. *Clin Cancer Res*. 2017;23:6498–6504.
- Knight JC, Topping C, Mosley M, et al. PET imaging of DNA damage using ⁸⁹Zr-labelled anti-gammaH2AX-TAT immunoconjugates. *Eur J Nucl Med Mol Imaging*. 2015;42:1707–1717.
- Knight JC, Torres JB, Goldin R, et al. Early detection in a mouse model of pancreatic cancer by imaging DNA damage response signaling. *J Nucl Med*. 2020;61:1006–1013.
- Cornelissen B, Kersemans V, Darbar S, et al. Imaging DNA damage in vivo using gammaH2AX-targeted immunoconjugates. *Cancer Res*. 2011;71:4539–4549.
- Kenanova V, Barat B, Olafsen T, et al. Recombinant carcinoembryonic antigen as a reporter gene for molecular imaging. *Eur J Nucl Med Mol Imaging*. 2009;36:104–114.
- Rosedtedt M, Andersson KG, Mitran B, et al. Affibody-mediated PET imaging of HER3 expression in malignant tumours. *Sci Rep*. 2015;5:15226.
- Kanda T, Sullivan KF, Wahl GM. Histone-GFP fusion protein enables sensitive analysis of chromosome dynamics in living mammalian cells. *Curr Biol*. 1998;8:377–385.
- Yamagata M, Sanes JR. Transgenic strategy for identifying synaptic connections in mice by fluorescence complementation (GRASP). *Front Mol Neurosci*. 2012;5:18.
- Kersemans V, Gilchrist S, Wallington S, et al. A carbon-fiber sheet resistor for MR-, CT-, SPECT-, and PET-compatible temperature maintenance in small animals. *Tomography*. 2019;5:274–281.
- Doñate-Macián P, Alvarez-Marimón E, Sepulcre F, Vazquez-Ibar JL, Peralvarez-Marin A. The membrane proximal domain of TRPV1 and TRPV2 channels mediates protein-protein interactions and lipid binding in vitro. *Int J Mol Sci*. 2019;20:682.
- Reddy S, Robinson MK. Immuno-positron emission tomography in cancer models. *Semin Nucl Med*. 2010;40:182–189.
- Liu S, Kwon M, Mannino M, et al. Nuclear envelope assembly defects link mitotic errors to chromothripsis. *Nature*. 2018;561:551–555.
- Beck M, Schmidt A, Malmstroem J, et al. The quantitative proteome of a human cell line. *Mol Syst Biol*. 2011;7:549.
- Bekker-Jensen DB, Kelstrup CD, Bath TS, et al. An optimized shotgun strategy for the rapid generation of comprehensive human proteomes. *Cell Syst*. 2017;4:587–599.e4.
- De Lorenzo C, Cozzolino R, Carpentieri A, Pucci P, Laccetti P, D'Alessio G. Biological properties of a human compact anti-ErbB2 antibody. *Carcinogenesis*. 2005;26:1890–1895.
- Maynard J, Georgiou G. Antibody engineering. *Annu Rev Biomed Eng*. 2000;2:339–376.
- Duchardt F, Fotin-Mleczek M, Schwarz H, Fischer R, Brock R. A comprehensive model for the cellular uptake of cationic cell-penetrating peptides. *Traffic*. 2007;8:848–866.
- Tünnemann G, Martin RM, Haupt S, Patsch C, Edenhofer F, Cardoso MC. Cargo-dependent mode of uptake and bioavailability of TAT-containing proteins and peptides in living cells. *FASEB J*. 2006;20:1775–1784.
- Ruscska I, Zimmer A. Internalization mechanisms of cell-penetrating peptides. *Beilstein J Nanotechnol*. 2020;11:101–123.
- Mussbach F, Franke M, Zoch A, Schaefer B, Reissmann S. Transduction of peptides and proteins into live cells by cell penetrating peptides. *J Cell Biochem*. 2011;112:3824–3833.
- Bárány-Wallje E, Gaur J, Lundberg P, Langel U, Graslund A. Differential membrane perturbation caused by the cell penetrating peptide Tp10 depending on attached cargo. *FEBS Lett*. 2007;581:2389–2393.
- Patel SG, Sayers EJ, He L, et al. Cell-penetrating peptide sequence and modification dependent uptake and subcellular distribution of green fluorescent protein in different cell lines. *Sci Rep*. 2019;9:6298.
- Nischan N, Herce HD, Natale F, et al. Covalent attachment of cyclic TAT peptides to GFP results in protein delivery into live cells with immediate bioavailability. *Angew Chem Int Ed Engl*. 2015;54:1950–1953.
- Ku A, Facca VJ, Cai Z, Reilly RM. Auger electrons for cancer therapy: a review. *EJNMMI Radiopharm Chem*. 2019;4:27.
- Price EW, Orvig C. Matching chelators to radiometals for radiopharmaceuticals. *Chem Soc Rev*. 2014;43:260–290.
- Rahmim A, Zaidi H. PET versus SPECT: strengths, limitations and challenges. *Nucl Med Commun*. 2008;29:193–207.
- Maeda H, Nakamura H, Fang J. The EPR effect for macromolecular drug delivery to solid tumors: improvement of tumor uptake, lowering of systemic toxicity, and distinct tumor imaging in vivo. *Adv Drug Deliv Rev*. 2013;65:71–79.
- Pyzik M, Rath T, Lencer WI, Baker K, Blumberg RS. FcRn: the architect behind the immune and nonimmune functions of IgG and albumin. *J Immunol*. 2015;194:4595–4603.