
Impact of ^{68}Ga -PSMA-11 PET on the Management of Recurrent Prostate Cancer in a Prospective Single-Arm Clinical Trial

Wolfgang P. Fendler^{*1,2}, Justin Ferdinandus^{*2}, Johannes Czernin¹, Matthias Eiber^{1,3}, Robert R. Flavell⁴, Spencer C. Behr⁴, I-Wei K. Wu⁴, Courtney Lawhn-Heath⁴, Miguel H. Pampaloni⁴, Robert E. Reiter⁵, Matthew B. Rettig^{5,6}, Jeannine Gartmann¹, Vishnu Murthy⁴, Roger Slavik¹, Peter R. Carroll⁷, Ken Herrmann^{1,2}, Jeremie Calais¹, and Thomas A. Hope⁴

¹Ahmanson Translational Theranostics Division, Department of Molecular and Medical Pharmacology, UCLA, Los Angeles, California; ²Department of Nuclear Medicine, University of Duisburg-Essen and German Cancer Consortium (DKTK), University Hospital Essen, Germany; ³Department of Nuclear Medicine, Klinikum rechts der Isar, Technical University of Munich, Munich, Germany; ⁴Department of Radiology and Biomedical Imaging, University of California, San Francisco, San Francisco, California; ⁵Department of Urology, UCLA Medical Center, UCLA, Los Angeles, California; ⁶Division of Hematology/Oncology, Department of Medicine, UCLA, and Division of Hematology/Oncology, Department of Medicine, VA Greater Los Angeles, Los Angeles, California; and ⁷Department of Urology, University of California, San Francisco, San Francisco, California

Prostate-specific membrane antigen (PSMA) ligand PET induces management changes in patients with prostate cancer. We aim to better characterize the impact of ^{68}Ga -PSMA-11 PET (^{68}Ga -PSMA PET) on management of recurrent prostate cancer in a large prospective cohort. **Methods:** We report management changes after ^{68}Ga -PSMA PET, a secondary endpoint of a prospective multicenter trial in men with biochemical recurrence of prostate cancer. Pre-PET (Q1), post-PET (Q2), and posttreatment (Q3) questionnaires were sent to referring physicians recording site of recurrence and intended (Q1 to Q2 change) and implemented (Q3) therapeutic and diagnostic management. **Results:** Q1 and Q2 response was collected for 382 of 635 patients (60%, intended cohort), and Q1, Q2, and Q3 response was collected for 206 patients (32%, implemented cohort). An intended management change occurred in 260 of 382 (68%) patients. The intended change was considered major in 176 of 382 (46%) patients. Major changes occurred most often for patients with prostate-specific antigen of 0.5 to less than 2.0 ng/mL (81/147, 55%). By analysis of stage groups, management change was consistent with PET disease location, that is, a majority of major changes toward active surveillance (47%) for unknown disease site (103/382, 27%), toward local or focal therapy (56%) for locoregional disease (126/382, 33%), and toward systemic therapy (69% M1a; 43% M1b/c) for metastatic disease (153/382, 40%). According to Q3 responses, the intended management was implemented in 160 of 206 (78%) patients. In total, 150 intended diagnostic tests, mostly CT ($n = 43$, 29%) and bone scans or ^{18}F -NaF PET ($n = 52$, 35%), were prevented by ^{68}Ga -PSMA PET; 73 tests, mostly biopsies ($n = 44$, 60%) as requested by the study protocol, were triggered. **Conclusion:** According to referring physicians, sites

of recurrence were clarified by ^{68}Ga -PSMA PET, and disease localization translated into management changes in more than half of patients with biochemical recurrence of prostate cancer.

Key Words: BCR; change in management; impact; molecular imaging; PET; prostate cancer

J Nucl Med 2020; 61:1793–1799
DOI: 10.2967/jnumed.120.242180

PET using ^{68}Ga -labeled ligands of the prostate-specific membrane antigen (PSMA) stages prostate cancer with high accuracy (1,2). Among other factors, disease location and extent critically guide management of recurrent prostate cancer (3,4).

The impact of ^{68}Ga -PSMA-11 PET (^{68}Ga -PSMA PET) on the management of biochemically recurrent prostate cancer has been assessed in several retrospective studies or smaller prospective cohorts (5–8). A recent metaanalysis investigating the impact of ^{68}Ga -PSMA PET on management at primary staging or biochemical recurrence reported management changes in approximately half of patients but found considerable heterogeneity among trials depending on prostate-specific antigen (PSA) level, PET positivity, and type-of-change definition (9). Overall, common management pathways and their association with PSA or ^{68}Ga -PSMA PET stage have not been characterized in a large prospective patient cohort yet.

Our recent prospective multicenter trial confirmed high detection rates, positive predictive value, and interreader reproducibility along with favorable safety for ^{68}Ga -PSMA PET in 635 patients with biochemically recurrent prostate cancer (10–12). Here, we assess the impact of ^{68}Ga -PSMA PET on the diagnostic and therapeutic management of biochemically recurrent prostate cancer, a secondary endpoint of this trial. To identify management pathways, the intended and implemented management change was determined for different stage groups, defined by ^{68}Ga -PSMA PET.

Received Jan. 13, 2020; revision accepted Apr. 7, 2020.
For correspondence or reprints contact: Thomas A. Hope, Department of Radiology and Biomedical Imaging, University of California, San Francisco, 505 Parnassus Ave., San Francisco, CA 94143.
E-mail: thomas.hope@ucsf.edu
Guest Editor: Todd E. Peterson, Vanderbilt University
^{*}Contributed equally to this work.
Published online May 1, 2020.
COPYRIGHT © 2020 by the Society of Nuclear Medicine and Molecular Imaging.

MATERIALS AND METHODS

Study Design

Patients were recruited at the University of California, Los Angeles (UCLA) (NCT02940262), and the University of California, San Francisco (UCSF) (NCT03353740) (10). In brief, patients with histopathologically confirmed prostate adenocarcinoma and biochemical recurrence were eligible. Biochemical recurrence was defined as a PSA of 0.2 ng/mL or higher measured more than 6 wk after prostatectomy or a PSA rise of 2 ng/mL or higher above nadir after radiation therapy.

⁶⁸Ga-PSMA PET

The imaging procedure was reported previously (10). In brief, all patients underwent ⁶⁸Ga-PSMA PET/CT or PET/MRI in accordance with present imaging guidelines (13). Images were interpreted by local clinical reading and, for the study report, additionally by 3 masked readers using an image-based TNM staging system (PROMISE) following regions for recurrence: prostate, prostate bed, and seminal vesicle remnants (Tr), pelvic lymph nodes (N1) (internal iliac, obturator, external iliac, perirectal, presacral, common iliac, and other), extrapelvic lymph nodes (M1a) (retroperitoneal, inguinal, chest, and other), bone (M1b), and visceral organs (M1c) (14).

Management

Figure 1 illustrates patient flow and physician surveys. To assess change in intended management after ⁶⁸Ga-PSMA PET, referring physicians received a pre-PET questionnaire (Q1, Supplemental Fig. 1; supplemental materials are available at <http://jnm.snmjournals.org>) on scheduling of the patient and a post-PET questionnaire (Q2, Supplemental Fig. 2) along with the written ⁶⁸Ga-PSMA PET report and a digital video disc with PET/CT or PET/MR images. In Q1, referrers were asked to indicate their pre-PET site of recurrence, which diagnostic tests they would order, and their currently intended management if ⁶⁸Ga-PSMA PET were not available. In Q2, referrers were asked again to indicate post-PET site of recurrence and their intended management based on the current clinical work-up, including ⁶⁸Ga-PSMA PET/CT or PET/MRI. Additionally, they were asked whether ⁶⁸Ga-PSMA PET enabled them to avoid or triggered any test or procedure. As part of follow-up, referring physicians received a 3- to 6-mo follow-up questionnaire (Q3, Supplemental Fig. 3) asking whether the intended management noted on Q2 was implemented.

Intermodality changes were considered major changes, with the exception of adjuvant androgen deprivation therapy added to or removed from local therapy, which was considered a minor change. Furthermore, we considered a switch of systemic treatment (i.e., modality abiraterone/enzalutamide to chemotherapy) as a major change. Otherwise, intramodality changes were regarded as minor changes. A detailed description of change categories can be found in Supplemental Table 1.

This study was approved by local institutional review boards at the UCSF and the UCLA, and written informed consent was obtained from all patients. Trial data were collected in a central REDCap database. Descriptive statistics were used to analyze and present data. All analyses were performed using R statistics (R, version 3.4.0).

RESULTS

Baseline Characteristics

Of the 635 (60%) patients, 382 had complete Q1 and Q2 surveys (intended management cohort). Complete Q1, Q2, and

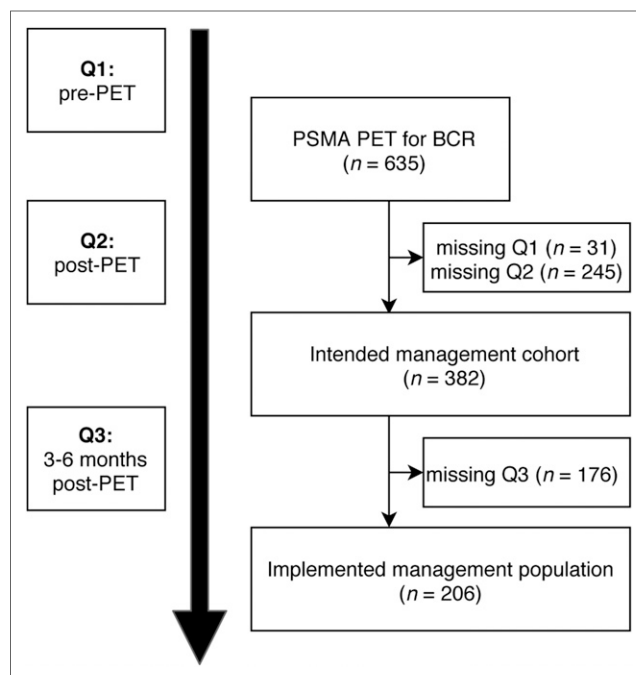


FIGURE 1. Patient flow and study design.

Q3 surveys were available for 206 patients (32%, implemented management cohort).

Baseline characteristics of the intended management cohort are summarized in Table 1. Before ⁶⁸Ga-PSMA PET, referring physicians responded that the location of disease was unknown in 262 of 382 patients (68%); 64 of 382 (17%) patients had locoregional disease, and 56 of 382 (15%) patients had metastatic disease.

Site of Recurrence and Intended Management Change

Figure 2 illustrates survey-based site of recurrence and intended management changes (Q1/Q2) stratified by ⁶⁸Ga-PSMA PET disease stage groups.

In the subgroup with no lesion localization by ⁶⁸Ga-PSMA PET (103/382, 27%), referring physicians reported an unknown disease location for 63 of 103 (61%; -19% change from baseline) patients according to the Q2 survey. Major change was recorded for 38 of 103 (37%) patients, with the largest subgroup (18/38, 47%) changing to intended active surveillance.

In the subgroup with locoregional disease by ⁶⁸Ga-PSMA PET (126/382, 33%), referring physicians reported suspicion of locoregional disease in 91 of 126 (72%; +51% change from baseline) patients according to the Q2 survey. A major change was recorded in 61 of 126 (48%) patients, with the largest subgroup being intended for local treatment options (34/61, 56%).

In the subgroup with extrapelvic nodal metastatic disease (M1a) according to ⁶⁸Ga-PSMA PET (64/382, 17%), referring physicians reported suspicion of metastatic disease in 37 of 64 (58%; +41% change from baseline) patients after PET. A major change was recorded in 31 of 64 (48%) patients, with the largest group shifting toward systemic therapy (20/31, 65%) after PET.

In the subgroup with osseous ($n = 85$, M1b) or visceral metastatic ($n = 4$, M1c) disease by ⁶⁸Ga-PSMA PET, referring physicians reported suspicion of metastatic disease in 65 of 89 (73%; +37%

TABLE 1
 Characteristics of Intended (*n* = 382) and Implemented Management Cohorts (*n* = 206)

Characteristic	Median	Range	Intended (<i>n</i>)	Implemented (<i>n</i>)
Age (y)	70.1	43.8–95.3		
Ethnicity/race				
White American			333 (87%)	177 (86%)
Black or African American			8 (2%)	2 (1%)
Asian American			10 (3%)	4 (2%)
Other			14 (4%)	7 (3%)
Missing data			17 (5%)	15 (7%)
Initial therapy				
Prostatectomy only			166 (44%)	86 (42%)
Radiotherapy only			101 (26%)	50 (24%)
Prostatectomy and salvage radiotherapy			115 (30%)	70 (34%)
Other prior therapy				
Local salvage therapy			56 (15%)	19 (9%)
Androgen deprivation therapy			145 (38%)	80 (39%)
Abiraterone/enzalutamide			11 (3%)	4 (2%)
Chemotherapy			12 (3%)	3 (1%)
Bone-targeted treatment			4 (1%)	1 (0%)
Other			24 (6%)	3 (1%)
Gleason score				
<8			237 (62%)	125 (61%)
≥8			112 (29%)	62 (30%)
Missing data			33 (9%)	19 (9%)
PSA				
Intended cohort	1.86	0.05–425		
Implemented cohort	1.75	0.2–425		
PSA doubling time*	6.30	0.43–5,018		
<6 mo			150 (39%)	83 (40%)
≥6 mo			160 (42%)	94 (46%)
Missing data			72 (19%)	19 (9%)
Prior staging examination within 6 mo of ⁶⁸ Ga-PSMA PET				
Negative for prostate cancer			101 (26%)	56 (27%)
Positive for prostate cancer			46 (12%)	24 (12%)
Equivocal			25 (7%)	14 (7%)
None			210 (55%)	112 (54%)

*In accordance with Pound et al. (22).

change from baseline) patients after PET. A major change in intended management occurred in 46 of 89 (52%) patients, with the largest groups being intended for either focal (15/46, 33%) or systemic (20/46, 43%) therapy after PET.

The rate of major change was different for the predefined PSA ranges: 39% for less than 0.5 ng/mL (*n* = 85), 58% for 0.5 to less than 1.0 ng/mL (*n* = 57), 53% for 1.0 to less than 2.0 ng/mL (*n* = 90), 45% for 2.0 to less than 5.0 ng/mL (*n* = 96), and 35% for 5.0 ng/mL or more (*n* = 54) as demonstrated in Supplemental Figure 4.

The rate of major change was different among patients with previous prostatectomy, radiotherapy, or both (Table 2). The highest

proportion of management changes was observed in patients having had both (57%). The intended management change (Q1/Q2) was not considerably different among patients currently undergoing versus not undergoing androgen deprivation therapy.

Triggered or Prevented Diagnostic Tests

Table 3 lists diagnostic tests planned before and prevented or triggered after ⁶⁸Ga-PSMA PET according to the referring physicians. Before ⁶⁸Ga-PSMA PET, referring physicians intended to perform 443 tests on 382 patients. According to Q2, 150 tests were prevented. One test was prevented in 45 of 382 patients (12%), and multiple tests were prevented in 48 of 382 patients (13%).

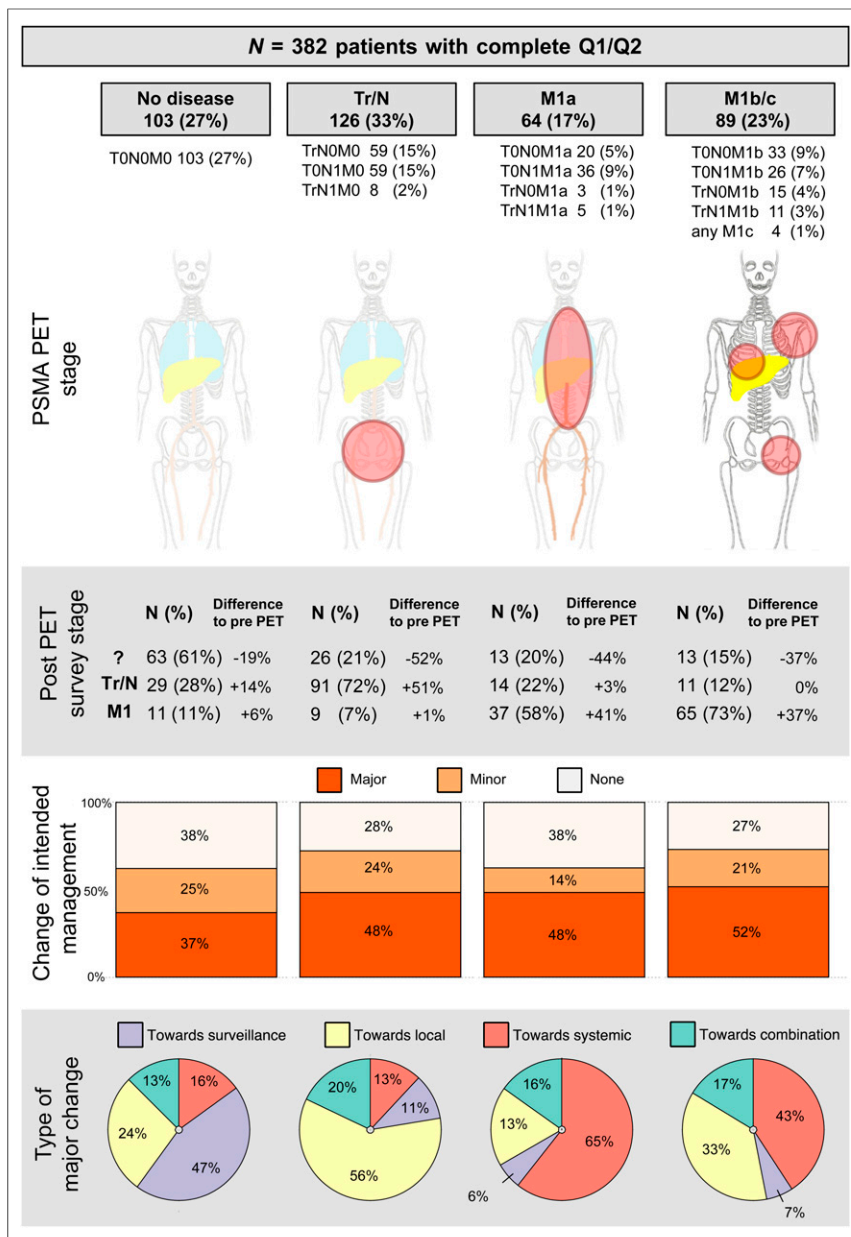


FIGURE 2. Summary of intended management change after ^{68}Ga -PSMA PET. ? = unknown stage.

Mostly bone scans or ^{18}F -NaF PET (52/150 tests, 35%) and CT scans (43/150 tests, 29%) were prevented by ^{68}Ga -PSMA PET. After ^{68}Ga -PSMA PET, 73 diagnostic tests were triggered in 70 patients. One test was triggered in 67 of 382 patients (18%), and 2 tests were triggered in 3 of 382 patients (1%). Biopsies to confirm ^{68}Ga -PSMA PET-positive sites of disease (44/73 tests, 60%) were triggered most often.

Implemented Management

Management implementation rates are given in Table 4. According to Q3 responses, the intended management was implemented in 160 (78%) patients. The management was implemented in 98 of 135 (72%) of patients with an intended change.

Continuation of the pre-PET management was implemented in 62 of 70 (89%) patients. The implementation rate was consistent and ranged from 66% to 78% for the various management-change pathways (Table 5).

DISCUSSION

For clinical impact, diagnostic tests need to translate into relevant changes in management. Analyses of the National Oncologic PET Registry (NOPR) demonstrated a change in management in 37% of cancer patients after ^{18}F -FDG PET and resulted in ^{18}F -FDG PET reimbursement for a wide range of indications in the United States (15). However, a subanalysis of the NOPR study revealed a somewhat lower rate of change in management for prostate cancer than for other entities, possibly because of low ^{18}F -FDG uptake and limited lesion detection (16). Since NOPR completion, several novel radiotracers have been introduced for prostate cancer imaging. Of these, radio-labeled PSMA ligands have been studied extensively since their introduction. Recently, a high positive predictive value, detection rate, and interreader agreement were reported for ^{68}Ga -PSMA PET in a prospective multicenter trial (10). Here, we present a NOPR-like survey-based impact on management data, a secondary endpoint of this prospective study.

^{68}Ga -PSMA PET resulted in a change in management in more than half of patients undergoing ^{68}Ga -PSMA PET for localization of biochemically recurrent prostate cancer. Referring physicians frequently accepted the reported site of disease according to Q2 surveys. Subsequent management pathways were consistent with ^{68}Ga -PSMA PET disease locations; that is, local treatment was considered more often for local disease (54/126 patients, 44%), whereas systemic disease was associated more often with an intended change toward systemic or combination approaches (106/153 patients, 69%). Our findings demonstrate that the accuracy of ^{68}Ga -PSMA PET translates into a change in disease stage and management consistent with PET-positive sites of recurrent prostate cancer.

After ^{68}Ga -PSMA PET, the proportion of patients with unknown sites of disease declined from about two thirds to one third according to the referring clinicians. The ^{68}Ga -PSMA PET disease location was frequently accepted by referring physicians. Individual management pathways are diverse (Supplemental Fig. 5). However, changes demonstrate detectable patterns: patients without detectable disease by ^{68}Ga -PSMA PET more often experienced intended major deescalation toward active surveillance (47%), whereas patients with locoregional disease had an intended

TABLE 2
Change in Intended Management Stratified by Previous Therapy and Hormone Status (*n* = 382)

Change category	Previous therapy			Hormone status	
	Prostatectomy (<i>n</i> = 166)	Prostatectomy + radiotherapy (<i>n</i> = 115)	Radiotherapy (<i>n</i> = 101)	No current ADT (<i>n</i> = 328)	Current ADT (<i>n</i> = 54)
Major change (<i>n</i> = 176)	63 (38%)	66 (57%)	47 (46%)	150 (46%)	26 (48%)
Minor change (<i>n</i> = 84)	46 (28%)	11 (10%)	27 (27%)	75 (23%)	9 (17%)
No change (<i>n</i> = 122)	57 (34%)	38 (33%)	25 (27%)	103 (31%)	19 (35%)

ADT = androgen deprivation therapy

major transition toward focal therapy (56%). In cases of extrapelvic nodal disease (M1a), clinicians tended toward a major change to systemic therapy (65%). In patients with bone metastasis (M1b) or visceral metastasis (M1c), major systemic or local treatment changes were most common (43% and 33%, respectively).

Accurate localization of disease is a critical early step in the management of patients with biochemical recurrence of prostate cancer. Focal and salvage therapies need accurate target delineation. On the other hand, the presence of distant metastases may trigger additional or alternative systemic therapy (3). Therefore, the updated European Association of Urology guidelines recommend ⁶⁸Ga-PSMA PET in biochemical recurrence after radical prostatectomy if the results will influence subsequent treatment decisions (3). In this study, major changes occurred most often in patients with a PSA of 0.5 to less than 2.0 ng/mL. However, an impact on subsequent treatment decisions occurred also in patients with undetectable or extensive disease. We further demonstrate that detectable management pathways follow guideline recommendations: focal or salvage therapy is offered for local disease, and systemic treatment is recommended in cases of metastatic spread (3). Whether ⁶⁸Ga-PSMA PET–induced management changes translate into survival benefits remains unknown. Prospective studies with long-term follow-up are required to answer this question. With this intent, trials investigating ⁶⁸Ga-PSMA PET–guided therapy are currently under way (17,18).

A previous study reported management changes based on surveys and chart review in an initial UCLA cohort (*n* = 101) of the presented study (5). Systematic chart review confirms that intended management changes frequently differ from implemented changes based on subsequent diagnostic tests, tumor board decisions, or patient preference (5). However, even when considering subsequent modification, the overall proportion of patients

experiencing a major implemented management change remains high (5). In our expanded cohort (*n* = 382), survey-based implemented management differed from intended management in 22% of patients overall; discrepancy was somewhat higher in patients with an intended management change (38%). The proportion of management change was similar in the biochemical failure cohort of a recent Australian multicenter study finding altered management in 62% of patients (6). Similarly, Müller et al. found a 60% management change in a retrospective cohort of recurrent prostate cancer and, of note, a high response rate to subsequent focal therapy (19). Overall, the impact on management was higher than reported in a recent metaanalysis of 1,163 patients at primary diagnosis and biochemical recurrence, with a change in management occurring in 54% of patients (95%CI, 47%–60%) (9). In this study, we report in more detail how management pathways are associated with PET stage, indicating that referring physicians have high confidence in ⁶⁸Ga-PSMA PET findings.

One hundred fifty diagnostic tests were prevented by ⁶⁸Ga-PSMA PET, according to the survey response. Most of these were CT scans (43 cases) or bone scans or ¹⁸F-NaF PET/CT (52 cases). The decision to omit these diagnostic tests is in line with several studies that demonstrated superior accuracy for ⁶⁸Ga-PSMA PET when compared with one or a combination of the prevented diagnostic instruments for prostate cancer localization (8,12,20,21). Specifically, ⁶⁸Ga-PSMA PET demonstrated superior detection sensitivity when compared head-to-head with bone scanning or the recently approved ¹⁸F-fluciclovine, especially at a PSA of 2 ng/mL or less (20,21). Although more diagnostic tests were prevented than triggered, the addition of ⁶⁸Ga-PSMA PET increases the total diagnostic work-up. On the other hand, at the time of enrollment, referring physicians had little experience with ⁶⁸Ga-PSMA PET, and some of the diagnostic tests, including biopsies (44/382, 12%), were encouraged by the study protocol for lesion validation. Histopathologic

TABLE 3
Diagnostic Tests Triggered or Prevented After ⁶⁸Ga-PSMA PET

Test type	MRI	CT	PET	¹⁸ F-NaF or bone scan	Biopsy	Other	Total
Tests planned before ⁶⁸ Ga-PSMA PET (Q1)	56 (13%)	77 (17%)	145 (33%)	144 (33%)	8 (2%)	13 (3%)	443
Tests prevented by ⁶⁸ Ga-PSMA PET (Q2)	16 (11%)	43 (29%)	17 (11%)	52 (35%)	18 (12%)	4 (3%)	150
Tests triggered after ⁶⁸ Ga-PSMA PET (Q2)	8 (11%)	7 (10%)	2 (3%)	5 (7%)	44 (60%)	7 (10%)	73

TABLE 4
Management Implementation (*n* = 206)

Management change	Implemented	Not implemented
Change intended (<i>n</i> = 136)	98 (72%)	38 (28%)
No change intended (<i>n</i> = 70)	62 (89%)	8 (11%)

validation resulted in a positive predictive value of 84% for ⁶⁸Ga-PSMA PET both on a per-patient basis and on a per-region basis (10). As availability improves, by an increasing number of clinical trials or an anticipated approval of PSMA ligand PET, additional tests, especially potentially burdensome biopsies, may be ordered less frequently in the future clinical setting.

Although this study benefits from a large cohort, missing questionnaires are a limitation to our study. More specifically, Q1 and Q2 were completed for 60% of patients, and all 3 questionnaires were available for only 32% of patients. A greater likelihood that proponents of new imaging technologies would reply may have introduced a responder bias. Furthermore, information on implemented management was not confirmed by file review, and a potential discrepancy between intended and finally implemented management, reported previously (5), was not resolved. The low Q3 rate may be due to the late request to respond, that is, 3–6 mo after ⁶⁸Ga-PSMA PET—disconnected from the PET report and outside typical clinical timelines. Also, a more frequent Q3 response for closely monitored or high-risk patients might have led to an overestimation of the management implementation rate. On the other hand, similar patient characteristics between the intended and implemented management cohorts (Table 1) indicate no relevant selection bias. Only a small proportion of patients were African-American. This underrepresentation may have led to a selection bias, and findings might not be entirely applicable to this ethnic group.

CONCLUSION

⁶⁸Ga-PSMA PET findings were accepted by referring physicians and induced management changes in more than half of patients with

TABLE 5
Management Implementation Details (*n* = 206)

Change category	Implemented	Not implemented
Major change to combination (<i>n</i> = 16)	11 (69%)	5 (31%)
Major change to local (<i>n</i> = 34)	26 (76%)	8 (24%)
Major change to surveillance (<i>n</i> = 17)	11 (65%)	6 (35%)
Major change to systemic (<i>n</i> = 29)	19 (66%)	10 (34%)
Minor change (<i>n</i> = 40)	31 (78%)	9 (22%)
No change (<i>n</i> = 70)	62 (89%)	8 (11%)

biochemically recurrent prostate cancer. Management pathways aligned with PET disease location: focal or salvage therapy for local disease; systemic treatment for distant metastases. Future randomized trials aim to evaluate the impact of management changes on oncologic outcomes.

DISCLOSURE

Wolfgang Fendler received academic financial support from the German Research Foundation (Deutsche Forschungsgemeinschaft [DFG], FE1573/1-1/807122 and FE1573/3-1/659216), Mercator Research Center Ruhr (MERCUR, An-2019-0001), IFORES, Doktor Robert Pflieger-Stiftung, and Wiedenfeld-Stiftung/Stiftung Krebsforschung Duisburg; is a consultant for Ipsen, Endocyte, and BTG; and received personal fees from Radio-Medix, outside the submitted work. Thomas Hope was supported by the Prostate Cancer Foundation (2017 Jonathan Kovler Young Investigator Award) and the National Institutes of Health (grant R01CA212148); is a consultant for Curium and Ipsen; and receives grant support from Philips. Jeremie Calais received grants from the Fondation ARC pour la recherche sur le cancer (SAE20160604150) and Philippe Foundation Inc. (New York). Johannes Czernin received grants from the U.S. Department of Energy (DESC0012353), Prostate Cancer Foundation (2017 Challenge Award, 17CHAL02), and Johnson Comprehensive Cancer Center (NIH-NCI Cancer Center support grant P30 CA016042); is a founder and board member and holds equity in Sofie Biosciences and Trethera Therapeutics; serves on the medical advisory board of Actinium; and is a member of the VISION trial steering committee, a clinical trial sponsored by Endocyte. Matthias Eiber is a consultant for ABX and Blue Earth Diagnostics. Robert Flavell receives grant support from Fukushima SiC. Matthew Rettig is a speaker and advisory board member for Janssen and Bayer, receives research funding from Novartis, and consults for Amgen and Ambrx. Ken Herrmann receives personal fees from Bayer, SIR-TEX, Adacap, Curium, Endocyte, BTG, IPSEN, Siemens Healthineers, GE Healthcare, Amgen, Novartis, and ymabs; other fees from Sofie Biosciences; nonfinancial support from ABX; and grants from BTG, outside the submitted work. Intellectual property patented by the University of California is licensed to Sofie Biosciences and Trethera Therapeutics. No other potential conflict of interest relevant to this article was reported.

ACKNOWLEDGMENTS

We thank the patients who volunteered to participate in this trial and the investigators and staff who cared for them. We thank the ⁶⁸Ga-PSMA PET masked expert readers: Okamoto Shozo, MD, Louise Emmett, MD, Helle D. Zacho, MD, Harun Ilhan, MD, Axel Wetter, MD, Christoph Rischpler, MD, Heiko Schoder, MD, and Irene A. Burger, MD. We thank Jens Eickhoff from the University of Wisconsin–Madison and Carina Demel, PhD, from the Max Planck Institute for Biophysical Chemistry, Göttingen, Germany, for assistance with the statistical analysis. We thank Martin Allen-Auerbach, MD, and Nicholas Nickols, MD, PhD, from UCLA, as well as Ashley Mishoe, PhD, and Rahul Aggarwal, MD, from UCSF for their contribution and support throughout the course of this study.

KEY POINTS

QUESTION: Does ^{68}Ga -PSMA PET impact the management of men with biochemically recurrent prostate cancer?

PERTINENT FINDINGS: We demonstrated that ^{68}Ga -PSMA PET findings were frequently accepted by referring physicians and induced management changes in 260 of 382 (68%) patients with biochemically recurrent prostate cancer. Furthermore, management pathways aligned with PET disease location: local therapy was chosen more often for local disease; a change toward systemic treatment was seen more often for distant metastases.

IMPLICATIONS FOR PATIENT CARE: ^{68}Ga -PSMA PET accuracy translates into a change in management for patients with recurrent prostate cancer. The potential benefit of ^{68}Ga -PSMA PET-guided management now needs to be assessed in prospective trials with oncologic outcome.

REFERENCES

1. Perera M, Papa N, Roberts M, et al. Gallium-68 prostate-specific membrane antigen positron emission tomography in advanced prostate cancer: updated diagnostic utility, sensitivity, specificity, and distribution of prostate-specific membrane antigen-avid lesions—a systematic review and meta-analysis. *Eur Urol*. 2020;77:403–417.
2. von Eyben FE, Picchio M, von Eyben R, Rhee H, Bauman G. ^{68}Ga -labeled prostate-specific membrane antigen ligand positron emission tomography/computed tomography for prostate cancer: a systematic review and meta-analysis. *Eur Urol Focus*. 2018;4:686–693.
3. Cornford P, Bellmunt J, Bolla M, et al. EAU-ESTRO-SIOG guidelines on prostate cancer. Part II: treatment of relapsing, metastatic, and castration-resistant prostate cancer. *Eur Urol*. 2017;71:630–642.
4. Mohler JL, Antonarakis ES, Armstrong AJ, et al. Prostate cancer, version 2.2019. NCCN clinical practice guidelines in oncology. *J Natl Compr Canc Netw*. 2019;17:479–505.
5. Calais J, Fendler WP, Eiber M, et al. Impact of ^{68}Ga -PSMA-11 PET/CT on the management of prostate cancer patients with biochemical recurrence. *J Nucl Med*. 2018;59:434–441.
6. Roach PJ, Francis R, Emmett L, et al. The impact of ^{68}Ga -PSMA PET/CT on management intent in prostate cancer: results of an Australian prospective multicenter study. *J Nucl Med*. 2018;59:82–88.
7. Hope TA, Aggarwal R, Chee B, et al. Impact of Ga-68 PSMA-11 PET on management in patients with biochemically recurrent prostate cancer. *J Nucl Med*. 2017;58:1956–1961.
8. Morigi JJ, Stricker PD, van Leeuwen PJ, et al. Prospective comparison of ^{18}F -fluoromethylcholine versus ^{68}Ga -PSMA PET/CT in prostate cancer patients who have rising PSA after curative treatment and are being considered for targeted therapy. *J Nucl Med*. 2015;56:1185–1190.
9. Han S, Woo S, Kim YJ, Suh CH. Impact of ^{68}Ga -PSMA PET on the management of patients with prostate cancer: a systematic review and meta-analysis. *Eur Urol*. 2018;74:179–190.
10. Fendler WP, Calais J, Eiber M, et al. Assessment of ^{68}Ga -PSMA-11 PET accuracy in localizing recurrent prostate cancer: a prospective single-arm clinical trial. *JAMA Oncol*. 2019;5:856–863.
11. Afshar-Oromieh A, Holland-Letz T, Giesel FL, et al. Diagnostic performance of ^{68}Ga -PSMA-11 (HBED-CC) PET/CT in patients with recurrent prostate cancer: evaluation in 1007 patients. *Eur J Nucl Med Mol Imaging*. 2017;44:1258–1268.
12. Eiber M, Maurer T, Souvatzoglou M, et al. Evaluation of hybrid ^{68}Ga -PSMA ligand PET/CT in 248 patients with biochemical recurrence after radical prostatectomy. *J Nucl Med*. 2015;56:668–674.
13. Fendler WP, Eiber M, Beheshti M, et al. ^{68}Ga -PSMA PET/CT: joint EANM and SNMMI procedure guideline for prostate cancer imaging: version 1.0. *Eur J Nucl Med Mol Imaging*. 2017;44:1014–1024.
14. Eiber M, Herrmann K, Calais J, et al. Prostate Cancer Molecular Imaging Standardized Evaluation (PROMISE): proposed miTNM classification for the interpretation of PSMA-ligand PET/CT. *J Nucl Med*. 2018;59:469–478.
15. Hillner BE, Siegel BA, Liu D, et al. Impact of positron emission tomography/computed tomography and positron emission tomography (PET) alone on expected management of patients with cancer: initial results from the National Oncologic PET Registry. *J Clin Oncol*. 2008;26:2155–2161.
16. Hillner BE, Siegel BA, Shields AF, et al. Relationship between cancer type and impact of PET and PET/CT on intended management: findings of the National Oncologic PET Registry. *J Nucl Med*. 2008;49:1928–1935.
17. Calais J, Czernin J, Fendler WP, Elashoff D, Nickols NG. Randomized prospective phase III trial of ^{68}Ga -PSMA-11 PET/CT molecular imaging for prostate cancer salvage radiotherapy planning [PSMA-SRT]. *BMC Cancer*. 2019;19:18.
18. Hofman MS, Murphy DG, Williams SG, et al. A prospective randomized multicentre study of the impact of gallium-68 prostate-specific membrane antigen (PSMA) PET/CT imaging for staging high-risk prostate cancer prior to curative-intent surgery or radiotherapy (proPSMA study): clinical trial protocol. *BJU Int*. 2018;122:783–793.
19. Müller J, Ferraro DA, Muehlethaler UJ, et al. Clinical impact of ^{68}Ga -PSMA-11 PET on patient management and outcome, including all patients referred for an increase in PSA level during the first year after its clinical introduction. *Eur J Nucl Med Mol Imaging*. 2019;46:889–900.
20. Calais J, Ceci F, Eiber M, et al. ^{18}F -fluciclovine PET-CT and ^{68}Ga -PSMA-11 PET-CT in patients with early biochemical recurrence after prostatectomy: a prospective, single-centre, single-arm, comparative imaging trial. *Lancet Oncol*. 2019;20:1286–1294.
21. Pyka T, Okamoto S, Dahlbender M, et al. Comparison of bone scintigraphy and ^{68}Ga -PSMA PET for skeletal staging in prostate cancer. *Eur J Nucl Med Mol Imaging*. 2016;43:2114–2121.
22. Pound CR, Partin AW, Eisenberger MA, Chan DW, Pearson JD, Walsh PC. Natural history of progression after PSA elevation following radical prostatectomy. *JAMA*. 1999;281:1591–1597.