

# Somatostatin Receptors as Targets for Nuclear Medicine Imaging and Radionuclide Treatment

Helmut R. Maecke<sup>1</sup> and Jean Claude Reubi<sup>2</sup>

<sup>1</sup>Department of Nuclear Medicine, University Hospital Freiburg, Freiburg, Germany; and <sup>2</sup>Division of Cell Biology and Experimental Cancer Research, Institute of Pathology, University of Berne, Berne, Switzerland

Radiolabeled peptides have been an important class of compounds in radiopharmaceutical sciences and nuclear medicine for more than 20 years. Despite strong research efforts, only somatostatin-based radiopeptides have a real impact on patient care, diagnostically and therapeutically. [<sup>111</sup>In-diethylenetriaminepentaacetic acid]<sup>0</sup>octreotide is commercially available for imaging. Imaging was highly improved by the introduction of PET radionuclides such as <sup>68</sup>Ga, <sup>64</sup>Cu, and <sup>18</sup>F. Two peptides are successfully used in targeted radionuclide therapy when bound to DOTA and labeled with <sup>90</sup>Y and <sup>177</sup>Lu.

**Key Words:** somatostatin receptors; SPECT/CT; PET/CT; targeted radionuclide therapy; theranostics

**J Nucl Med 2011; 52:841–844**

DOI: 10.2967/jnumed.110.084236

Neuroendocrine tumors are regarded as rare, but their incidence and prevalence have increased substantially over the last 30 years (1). This has to do in part with improved modern diagnostic work-up, such as through somatostatin receptor imaging with SPECT and PET, methods based on somatostatin receptor expression in these tumors. To date, 5 human somatostatin receptor subtypes (sst1–sst5) have been characterized (2). These subtypes belong to the superfamily of G protein–coupled receptors and represent the molecular basis for their detection by imaging probes, for targeted radionuclide therapy, and for the use of stable analogs such as octreotide and lanreotide for treatment of gastroenteropancreatic neuroendocrine tumors and acromegaly.

## TARGETED DIAGNOSIS AND THERAPY OF SOMATOSTATIN RECEPTOR-POSITIVE TUMORS

Imaging and targeted radionuclide therapy require a probe labeled with a diagnostic or therapeutic radionuclide that is injected intravenously into patients. The tracer will extravasate and bind to sites with high somatostatin receptor density. Agonist-based radiopeptides will internalize on binding to the receptor. This will lead to an accumulation of radioactivity in the tumor and is regarded as the decisive mechanism for high accumulation and

tumor retention. Clearance via the kidneys is preferable to clearance via the gastrointestinal tract.

## DEVELOPMENT OF SOMATOSTATIN RECEPTOR-TARGETING RADIOPEPTIDES

The molecular basis for the development and clinical application of somatostatin-based radiopeptide targeting is the high expression of somatostatin receptors on the plasma membrane of tumor cells. In vitro receptor evaluation using receptor autoradiography or immunohistochemistry is mandatory before radioligands can be developed for in vivo studies. The most reliable method is autoradiography characterizing and quantifying the receptor protein. Receptor density and homogeneity, as well as incidence, are important factors in predicting successful in vivo targeting. Somatostatin receptors have been identified at high density and incidence in most neuroendocrine tumors, including gastroenteropancreatic tumors, pheochromocytomas, pituitary adenomas, and paragangliomas but also in tumors of the nervous system such as neuroblastomas, medulloblastomas, and meningiomas. At lower incidence and density, somatostatin receptors are present in insulinomas, lymphomas, breast carcinomas, renal cell carcinomas, hepatocellular carcinomas, medullary thyroid carcinomas, and small cell lung carcinomas. A high variability has been observed: although most neuroendocrine tumors have a homogeneous distribution, others such as breast cancers express somatostatin receptors quite heterogeneously. Among the 5 somatostatin receptor subtypes, sst2 was found to be predominantly expressed (2).

Equally important is the receptor expression in normal tissue. Physiologic expression of somatostatin receptors is found in the brain, pituitary, thyroid, pancreas, adrenals, kidneys, gastrointestinal tract, and immune system. Low physiologic expression is important in regard to good image contrast but is a more critical safety issue in targeted radiotherapy.

## IMAGING AND THERAPY PROBES

Several critical parameters determine the suitability of somatostatin-based radiopeptides for clinical applications. First, receptor-binding affinity should be in the low nanomolar range. Small peptides often lose their affinity on radiolabeling. They have molecular weights of around 1,000 Da; a chelator such as DOTA (1,4,7,10-tetraaza-cyclododecane-1,4,7,10-tetraacetic acid) adds about 500 Da, illustrating that chelators and prosthetic groups for radiohalogenation may strongly influence receptor affinity and biologic potency in general.

Second, the internalization rate appears to be important if agonistic peptides are selected, as it correlates well with tumor

Received Mar. 18, 2011; revision accepted Apr. 11, 2011.

For correspondence or reprints contact: Helmut R. Maecke, Department of Nuclear Medicine, University Hospital Freiburg, Hugstetterstrasse 55, D-79106 Freiburg, Germany.

E-mail: helmut.maecke@uniklinik-freiburg.de

COPYRIGHT © 2011 by the Society of Nuclear Medicine, Inc.

uptake (3). The pharmacokinetics are of higher importance than the above parameters. The first and second radiopeptides studied in patients, [ $^{123}\text{I}$ -Tyr $^3$ ]octreotide and [ $^{111}\text{In}$ -DTPA $^0$ ]octreotide (DTPA = diethylenetriaminepentaacetic acid), respectively, are good examples. Whereas the former shows high sst2 affinity and a high rate of internalization, the latter is a poor radioligand with a low internalization rate (3,4). The poor pharmacokinetics showing mainly hepatobiliary excretion (5), along with a tedious labeling procedure, led to the abandonment of the former and registration of the latter.

Third, peptides are metabolically unstable because of *in vivo* proteolysis. Radiolabeled endogenous peptide ligands are therefore not suitable because of insufficient *in vivo* stability and bioavailability. Somatostatin-14 has a short plasma half-life of 2–3 min, whereas octreotide shows a highly improved plasma half-life of more than 1 h.

A fourth critical parameter is label stability. Radioligands used in somatostatin receptor targeting are labeled mostly with radiometals. These often are bone seekers or strongly bind to plasma proteins; therefore, encapsulation of the radiometals is important to avoid premature release. Cage-type macrocyclic molecules such as DOTA confer extreme stability to its radiometal complexes, allowing safe clinical use. A recent review by Waddas et al. discussed the role of coordination chemistry of important radiometals (6).

## PEPTIDE-BASED PROBES FOR SOMATOSTATIN RECEPTOR-POSITIVE TUMORS

The early proof of principle using [ $^{123}\text{I}$ -Tyr $^3$ ]octreotide and the registration of [ $^{111}\text{In}$ -DTPA $^0$ ]octreotide were a strong motivator for developing new somatostatin receptor-targeting agents. The incentive came from the known shortcomings of the 2 radiotracers. Research programs to develop more suitable radiopeptides were initiated. The most important ones are summarized in Figure 1. They are based on the  $\gamma$ -emitters  $^{99\text{m}}\text{Tc}$  and  $^{111}\text{In}$ ; the  $\beta^+$ -emitters  $^{68}\text{Ga}$ ,  $^{64}\text{Cu}$ ,  $^{86}\text{Y}$ , and  $^{18}\text{F}$ ; and the particle emitters  $^{90}\text{Y}$  (high-energy  $\beta^-$ ) and  $^{177}\text{Lu}$  (low-energy  $\beta^-$ ). A review by Schottelius and Wester provides more information (7).

Figure 1 depicts the conjugates most commonly used in clinical practice, and the respective radiometals. They are based on octapeptides such as octreotide (OC), [Tyr $^3$ ]octreotide (TOC), [1-Nal $^3$ ]octreotide (NOC), and [Tyr $^3$ ,Thr $^8$ ]octreotide (TATE). As indicated, [ $^{111}\text{In}$ -DTPA $^0$ ]octreotide was the first commercially available imaging agent. [ $^{99\text{m}}\text{Tc}$ -hydrazinonicotinamide (HYNIC)/ethylenediamine-*N,N'*-diacetic acid (EDDA),Tyr $^3$ ]octreotide ( $^{99\text{m}}\text{Tc}$ -HYNIC-TOC) is commercially available in some European countries.

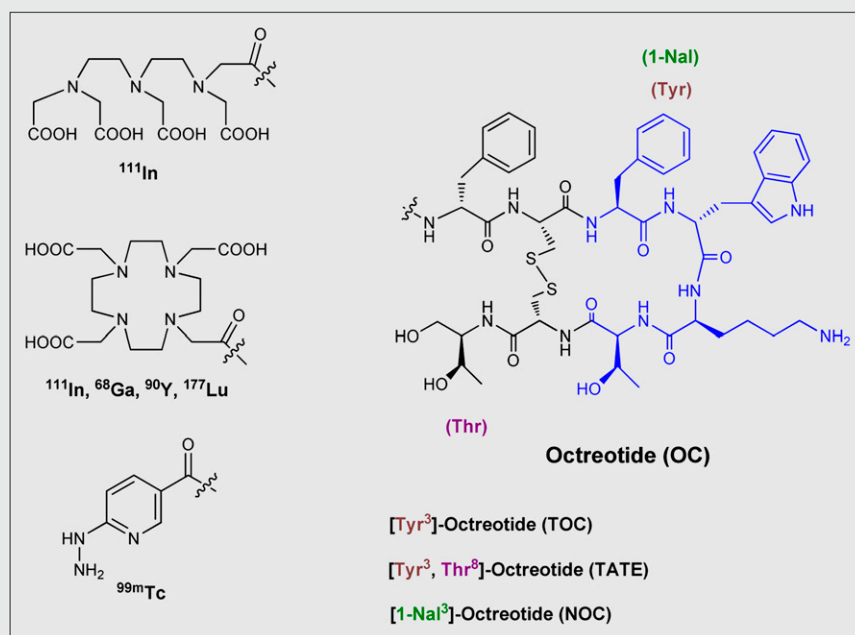
For stable labeling with radiolanthanides and  $^{90}\text{Y}$ , DTPA was replaced by DOTA, which is a better choice as it forms thermodynamically and kinetically stable complexes with 3+ charged radiometals.

The replacement of Phe $^3$  in octreotide by Tyr $^3$  leads to an improved sst2 affinity, but the sst3 and sst5 affinity is reduced; the C-terminal introduction of Thr for Thr(ol) results in a sst2-selective ligand with a 7-fold improvement of sst2 affinity (4). The NOC derivative (1-Nal in position 3) leads to a radiopeptide with affinity to sst2,3,5. Interestingly, a change of radiometal may profoundly influence receptor affinity. Labeling of the above DOTA conjugates with  $^{68}\text{Ga}$  improves sst2 affinities by up to 8-fold (8).

Besides these clinically most frequently used radiopeptides, many others have been studied preclinically and preliminarily in patients. Among them are  $^{18}\text{F}$ - and  $^{11}\text{C}$ -labeled glycosylated octreotate derivatives and  $^{64}\text{Cu}$ -labeled peptides (9). Excellent preclinical and clinical data have also been obtained with a tetramine-based TATE conjugate labeled with  $^{99\text{m}}\text{Tc}$  (7).

## THERANOSTIC PAIRS

Personalized medicine is used along with targeted therapy in general. The targeting of somatostatin receptor-positive tumors is an ideal example of this approach. It combines powerful new diagnostics and radiotargeted therapeutics. A diagnostic scan with a  $\gamma$ - or  $\beta^+$ -emitting nuclear probe is used to identify tumors and metastases that overexpress somatostatin receptors and is therefore predictive of the potential for targeted radionuclide therapy in patients. It also allows the study of dosimetry, thereby estimating



**FIGURE 1.** Structures, chelators, and radiometals for imaging and targeted therapy; they represent the radioligands most frequently used in the clinic.

doses to tumors and normal organs. If the therapeutic window appears wide enough, the same probe can be applied, labeled with a particle emitter. The final goal is a therapy probe with pharmacokinetics the same as or similar to the diagnostic probe. Ideally, this is possible with so-called matched pairs; that is, diagnostic radionuclides sharing the chemistry of the therapeutic congener. Examples are  $^{99m}\text{Tc}/^{186,188}\text{Re}$ ,  $^{86}\text{Y}/^{90}\text{Y}$ , and  $^{64}\text{Cu}/^{67}\text{Cu}$ . Because of the similar coordination chemistry,  $^{111}\text{In}$  is often used as a surrogate of  $^{90}\text{Y}$  but also of  $\beta^-$ -emitting radiolanthanides.

### CLINICAL STUDIES (DIAGNOSIS)

[ $^{111}\text{In}$ -DTPA $^0$ ]octreotide has been used for more than 15 y in the diagnosis and staging of sst-positive tumors. In recent years, its performance has been compared with new SPECT and PET tracers based on  $^{99m}\text{Tc}$  and  $^{68}\text{Ga}$ . Hubalewska-Dydejczyk et al. demonstrated the superiority of the SPECT tracer [ $^{99m}\text{Tc}$ -HYNIC/EDDA]octreotate over [ $^{111}\text{In}$ -DTPA $^0$ ]octreotide in 75 patients (10). The superiority was confirmed by other groups.

$^{68}\text{Ga}$ -based PET tracers are widely used in Europe, in particular  $^{68}\text{Ga}$ -DOTATOC,  $^{68}\text{Ga}$ -DOTATATE, and  $^{68}\text{Ga}$ -DOTANOC; the last of these has affinity for sst2, sst3, and sst5, resulting in a somewhat higher diagnostic sensitivity than  $^{68}\text{Ga}$ -DOTATATE, which has the highest sst2 affinity of all these tracers (11,12).

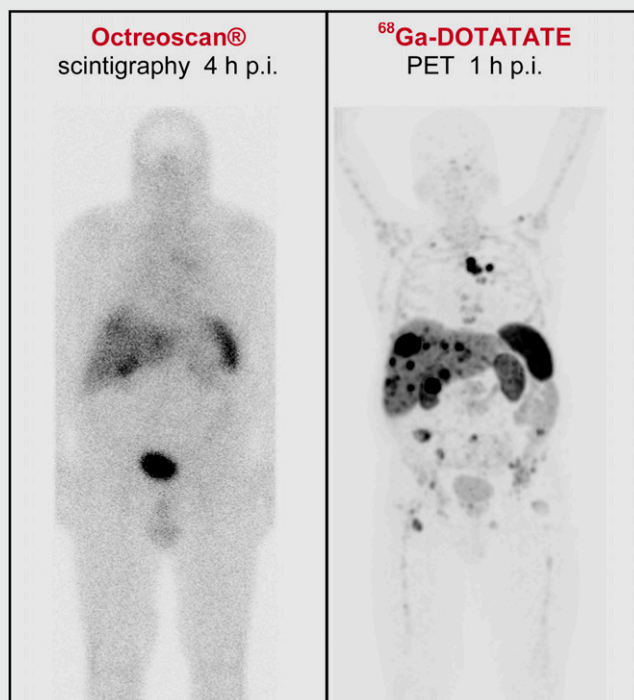
Several studies comparing the  $^{68}\text{Ga}$ -based peptides with [ $^{111}\text{In}$ -DTPA $^0$ ]octreotide were performed and showed the distinctly higher sensitivity of the PET tracers (13). A typical example of images in the same patient is shown in Figure 2. In addition to the better imaging performance, the radiation dose to the patient is lower and the final result of the study is available within a few hours after injection. For an even broader application, a registered  $^{68}\text{Ge}/^{68}\text{Ga}$  generator is urgently needed along with a kit formulation of one of the peptides. Bushnell and Baum recently provided an overview of imaging techniques (14).

### CLINICAL STUDIES (THERAPY)

Numerous centers across Europe routinely provide targeted radionuclide therapy using radiolabeled somatostatin analogs to patients with metastasized or unresectable neuroendocrine tumors. The most frequently used radiopeptides are  $^{90}\text{Y}$ -DOTATOC and  $^{177}\text{Lu}$ -DOTATATE, and different combinations thereof have also been applied. Several phase I and II clinical studies on targeted radionuclide therapy have been published (15,16). The variability in the therapeutic schemes applied in these studies (injected dose and number of treatment cycles), as well as in the recruited population (inclusion criteria and selection of the patients), makes the comparison of these data nearly impossible. Therefore, the answer to the question of which radiopeptide is preferable and which therapeutic scheme should be followed is still debatable.

Despite their complexity and diversity, the published clinical studies on patients treated with targeted radionuclide therapy have reported an objective response rate (defined as complete remission and partial remission) ranging from 9% to 33%. A median time to progression of 29–40 mo and a median overall survival of 37–46 mo have been reported for patients with gastroenteropancreatic-neuroendocrine tumor. An impressive example of a partial remission after a single therapy cycle is shown in Figure 3.

Targeted radionuclide therapy can be regarded as relatively safe. Severe toxicity rarely may occur as a result of the radiation-absorbed dose in healthy organs. Kidneys and bone marrow are the dose-limiting organs in this treatment.



**FIGURE 2.** Patient with metastasized neuroendocrine tumor. Planar (left) and PET (right) images were obtained 3 wk apart. p.i. = after injection. (Courtesy of Damian Wild, University Hospital Freiburg.)

### FUTURE DEVELOPMENTS

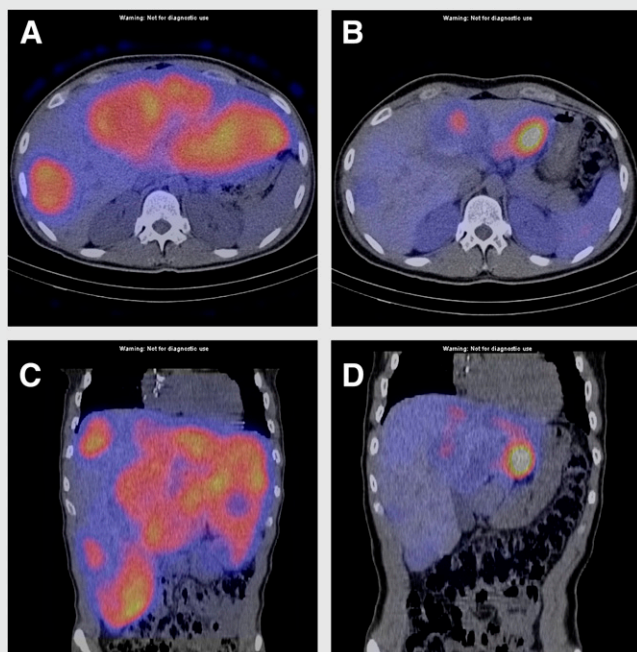
#### New Strategies

The general strategy used to develop peptide radioligands has been to identify a high-affinity peptide analog to which a chelator or a prosthetic group can be coupled. Crucial requirements are a high binding affinity and a high internalization rate, a general characteristic of agonistic peptides. This strategy has led to the development of a large number of excellent somatostatin agonist radioligands. Recently, however, several observations have challenged this strategy.

First, it has been shown that potent somatostatin receptor antagonists, known to poorly internalize into tumor cells, can visualize tumors *in vivo* as well as or even better than agonists (17). This unexpected phenomenon was found for sst2- and sst3-selective somatostatin analogs and may be due to the binding of the antagonist to a larger number of sites and to its lower dissociation rate. A pilot clinical trial with an  $^{111}\text{In}$ -DOTA-sst2 antagonist recently confirmed the animal data (18). More potent sst2 antagonists for the same purpose are in development (19). To achieve this goal, several functional tests able to distinguish an agonist from an antagonist had to be developed (19,20).

Second, it was observed that some established somatostatin agonists, in particular those belonging to the pan-somatostatin family, were biased agonists. For instance, the 2 pansomatostatins, SOM230 and KE108, which had been established as full and potent sst2 agonists on growth hormone release or in the adenylate cyclase assay, were found to be sst2 antagonists in calcium assays and extracellular signal-regulated kinase phosphorylation assays (20). These compounds were also found to poorly trigger the sst2 internalization (21) and therefore to be poorly internalized them-





**FIGURE 3.** Transaxial (A and B) and coronal (C and D) SPECT/CT images obtained after first (A and C) and second (B and D) therapy cycles with  $^{90}\text{Y}/^{111}\text{In}$ -DOTATOC ( $^{111}\text{In}$  is added for imaging). Impressive partial remission is seen after first therapy cycle. (Courtesy of Flavio Forrer and Guillaume Nicolas, University Hospital Basel, Switzerland.)

selves (22). Third, it was observed that the simple addition of a DOTA chelator to a potent sst3 antagonist switches its functional behavior toward an agonist (23).

This new information indicates the complexity of developing peptide radioligands and shows that it is mandatory to evaluate in vitro the peptide ligands of interest at each step of development.

Another strategy to find new compounds is to modify the physicochemical properties of the peptides. A recent example is the development of bicyclic somatostatin-based radiopeptides, a neglected family of radiopeptides, developed by Fani et al. (24). These molecules have fast background clearance and therefore high tumor-to-normal organ ratios. This new structural motif represents a promising basis for new radiopeptides with improved properties.

### Multireceptor Targeting

In vitro autoradiography studies have shown that multiple receptors may be coexpressed on the same tumor, allowing the use of a cocktail of radiopeptides to increase the probability of targeting a particular tumor type. Gastrinomas coexpress sst2 and sst5 receptors, glucagonlike peptide receptor 1, and gastrin-releasing peptide receptor. Insulinomas coexpress glucagonlike peptide 1, gastrin, and sst1 and sst2 receptors. Ileal carcinoids often concomitantly express sst1, sst2, and sst5 receptors; neuromedin B receptor; and gastrin receptors (2).

### CONCLUSION

Diagnostic and radiotherapeutic targeting of neuroendocrine tumors with peptide-based nuclear probes has been proven useful. To fully exploit its potential, the development of new radiopeptides with improved pharmacokinetics is warranted.

### REFERENCES

- Modlin IM, Oberg K, Chung DC, et al. Gastroenteropancreatic neuroendocrine tumours. *Lancet Oncol*. 2008;9:61–72.
- Reubi JC. Peptide receptors as molecular targets for cancer diagnosis and therapy. *Endocr Rev*. 2003;24:389–427.
- Storch D, Behe M, Walter MA, et al. Evaluation of [ $^{99\text{m}}\text{Tc}$ /EDDA/HYNIC] octreotide derivatives compared with [ $^{111}\text{In}$ -DOTA0,Tyr3,Thr8]octreotide and [ $^{111}\text{In}$ -DTPA0]octreotide: does tumor or pancreas uptake correlate with the rate of internalization? *J Nucl Med*. 2005;46:1561–1569.
- Reubi JC, Schar JC, Waser B, et al. Affinity profiles for human somatostatin receptor subtypes SST1–SST5 of somatostatin radiotracers selected for scintigraphic and radiotherapeutic use. *Eur J Nucl Med*. 2000;27:273–282.
- Krenning EP, Bakker WH, Breeman WA, et al. Localisation of endocrine-related tumours with radioiodinated analogue of somatostatin. *Lancet*. 1989;1:242–244.
- Wadas TJ, Wong EH, Weisman GR, Anderson CJ. Coordinating radiometals of copper, gallium, indium, yttrium, and zirconium for PET and SPECT imaging of disease. *Chem Rev*. 2010;110:2858–2902.
- Schottelius M, Wester HJ. Molecular imaging targeting peptide receptors. *Methods*. 2009;48:161–177.
- Antunes P, Ginj M, Zhang H, et al. Are radiogallium-labelled DOTA-conjugated somatostatin analogues superior to those labelled with other radiometals? *Eur J Nucl Med Mol Imaging*. 2007;34:982–993.
- Shokeen M, Anderson CJ. Molecular imaging of cancer with copper-64 radiopharmaceuticals and positron emission tomography (PET). *Acc Chem Res*. 2009;42:832–841.
- Hubalewska-Dydejczyk A, Fross-Baron K, Mikolajczak R, et al.  $^{99\text{m}}\text{Tc}$ -EDDA/HYNIC-octreotate scintigraphy, an efficient method for the detection and staging of carcinoid tumours: results of 3 years' experience. *Eur J Nucl Med Mol Imaging*. 2006;33:1123–1133.
- Wild D, Bomanji JB, Reubi JC, Maecke HR, Caplin ME, Ell PJ. Comparison of  $^{68}\text{Ga}$ -DOTANOC and  $^{68}\text{Ga}$ -DOTATATE PET/CT in the detection of GEP NETs [abstract]. *Eur J Nucl Med Mol Imaging*. 2009;36(suppl 2):S201.
- Ambrosini V, Tomassetti P, Castellucci P, et al. Comparison between  $^{68}\text{Ga}$ -DOTA-NOC and  $^{18}\text{F}$ -DOPA PET for the detection of gastro-entero-pancreatic and lung neuro-endocrine tumours. *Eur J Nucl Med Mol Imaging*. 2008;35:1431–1438.
- Gabriel M, Decristoforo C, Kendler D, et al.  $^{68}\text{Ga}$ -DOTA-Tyr3-octreotide PET in neuroendocrine tumors: comparison with somatostatin receptor scintigraphy and CT. *J Nucl Med*. 2007;48:508–518.
- Bushnell DL, Baum RP. Standard imaging techniques for neuroendocrine tumors. *Endocrinol Metab Clin North Am*. 2011;40:153–162.
- Kwekkeboom DJ, Kam BL, van Essen M, et al. Somatostatin-receptor-based imaging and therapy of gastroenteropancreatic neuroendocrine tumors. *Endocr Relat Cancer*. 2010;17:R53–R73.
- Nicolas G, Giovacchini G, Muller-Brand J, Forrer F. Targeted radiotherapy with radiolabeled somatostatin analogs. *Endocrinol Metab Clin North Am*. 2011;40:187–204.
- Ginj M, Zhang H, Waser B, et al. Radiolabeled somatostatin receptor antagonists are preferable to agonists for in vivo peptide receptor targeting of tumors. *Proc Natl Acad Sci USA*. 2006;103:16436–16441.
- Wild D, Fani M, Behe M, et al. First clinical evaluation of somatostatin receptor antagonist imaging [abstract]. *J Nucl Med*. 2010;51(suppl 2):483.
- Cescato R, Erchegyi J, Waser B, et al. Design and in vitro characterization of highly sst2-selective somatostatin antagonists suitable for radiotargeting. *J Med Chem*. 2008;51:4030–4037.
- Cescato R, Loesch KA, Waser B, et al. Agonist-biased signaling at the sst2A receptor: the multi-somatostatin analogs KE108 and SOM230 activate and antagonize distinct signaling pathways. *Mol Endocrinol*. 2009;24:240–249.
- Waser B, Cescato R, Tamma ML, Maecke HR, Reubi JC. Absence of somatostatin SST(2) receptor internalization in vivo after intravenous SOM230 application in the AR42J animal tumor model. *Eur J Pharmacol*. 2010;644:257–262.
- Ginj M, Zhang H, Eisenwiener KP, et al. New pansomatostatin ligands and their chelated versions: affinity profile, agonist activity, internalization, and tumor targeting. *Clin Cancer Res*. 2008;14:2019–2027.
- Reubi JC, Erchegyi J, Cescato R, Waser B, Rivier JE. Switch from antagonist to agonist after addition of a DOTA chelator to a somatostatin analog. *Eur J Nucl Med Mol Imaging*. 2010;37:1551–1558.
- Fani M, Mueller A, Tamma ML, et al. Radiolabeled bicyclic somatostatin-based analogs: a novel class of potential radiotracers for SPECT/PET of neuroendocrine tumors. *J Nucl Med*. 2010;51:1771–1779.