

---

# Impact of Tumor Size and Tracer Uptake Heterogeneity in $^{18}\text{F}$ -FDG PET and CT Non–Small Cell Lung Cancer Tumor Delineation

Mathieu Hatt<sup>1</sup>, Catherine Cheze-le Rest<sup>1</sup>, Angela van Baardwijk<sup>2</sup>, Philippe Lambin<sup>2</sup>, Olivier Pradier<sup>1,3</sup>, and Dimitris Visvikis<sup>1</sup>

<sup>1</sup>INSERM, U650 LaTIM, CHRU Morvan, Brest, France; <sup>2</sup>MAASTricht Radiation Oncology Clinic, Maastricht, The Netherlands; and

<sup>3</sup>Department of Radiotherapy, CHRU Morvan, Brest, France

The objectives of this study were to investigate the relationship between CT- and  $^{18}\text{F}$ -FDG PET-based tumor volumes in non-small cell lung cancer (NSCLC) and the impact of tumor size and uptake heterogeneity on various approaches to delineating uptake on PET images. **Methods:** Twenty-five NSCLC cancer patients with  $^{18}\text{F}$ -FDG PET/CT were considered. Seventeen underwent surgical resection of their tumor, and the maximum diameter was measured. Two observers manually delineated the tumors on the CT images and the tumor uptake on the corresponding PET images, using a fixed threshold at 50% of the maximum ( $T_{50}$ ), an adaptive threshold methodology, and the fuzzy locally adaptive Bayesian (FLAB) algorithm. Maximum diameters of the delineated volumes were compared with the histopathology reference when available. The volumes of the tumors were compared, and correlations between the anatomic volume and PET uptake heterogeneity and the differences between delineations were investigated. **Results:** All maximum diameters measured on PET and CT images significantly correlated with the histopathology reference ( $r > 0.89$ ,  $P < 0.0001$ ). Significant differences were observed among the approaches: CT delineation resulted in large overestimation ( $+32\% \pm 37\%$ ), whereas all delineations on PET images resulted in underestimation (from  $-15\% \pm 17\%$  for  $T_{50}$  to  $-4\% \pm 8\%$  for FLAB) except manual delineation ( $+8\% \pm 17\%$ ). Overall, CT volumes were significantly larger than PET volumes ( $55 \pm 74 \text{ cm}^3$  for CT vs. from  $18 \pm 25$  to  $47 \pm 76 \text{ cm}^3$  for PET). A significant correlation was found between anatomic tumor size and heterogeneity (larger lesions were more heterogeneous). Finally, the more heterogeneous the tumor uptake, the larger was the underestimation of PET volumes by threshold-based techniques. **Conclusion:** Volumes based on CT images were larger than those based on PET images. Tumor size and tracer uptake heterogeneity have an impact on threshold-based methods, which should not be used for the delineation of cases of large heterogeneous NSCLC, as these methods tend to largely underestimate the spatial extent of the functional tumor in such cases. For an accurate delineation of PET volumes in NSCLC, advanced image segmentation algorithms able to deal with tracer uptake heterogeneity should be preferred.

**Key Words:** NSCLC;  $^{18}\text{F}$ -FDG; tumor delineation; tumor volumes; tumor size; uptake heterogeneity

**J Nucl Med 2011; 52:1690–1697**

DOI: 10.2967/jnumed.111.092767

The use of  $^{18}\text{F}$ -FDG PET, with the addition of CT since the development of PET/CT devices, has been increasing for staging non-small cell lung cancer (NSCLC) (1). In addition, the use of  $^{18}\text{F}$ -FDG PET/CT in radiotherapy treatment planning for the definition of gross tumor volume has been similarly growing (2). Manual contouring of the tumor boundaries on the CT images is still the conventional methodology for target volume definition. On the other hand, and despite a high spatial resolution, the delineation on CT alone may be biased by insufficient contrast between tumor and healthy tissues (e.g., in cases of atelectasis, pleural effusion, and fibrosis or for tumors attached to the chest wall or mediastinum). Several studies have investigated the impact of delineation performed on fused  $^{18}\text{F}$ -FDG PET/CT images and have found significant modifications of the treatment plan (size, location, or shape of the gross tumor volume) (3) and reduced inter- and intraobserver variability (4). Additional benefits from the use of PET relative to CT include the potential to image cellular proliferation and tumor hypoxia using tracers such as 3'-deoxy-3'- $^{18}\text{F}$ -fluorothymidine and  $^{18}\text{F}$ -fluoromisonidazole or  $^{64}\text{Cu}$ -diacetyl-bis( $N^4$ -methylthiosemicarbazone), respectively.

However, the integration of PET within radiotherapy planning is complex, especially because there is neither consensus nor guidelines regarding the delineation of  $^{18}\text{F}$ -FDG PET tumor uptake or how to subsequently use the delineated functional volumes. Most previously published studies have investigated the use of a specific threshold of PET uptake to define the metabolically active tumor volume (MATV, the tumor volume that can be seen and delineated on an  $^{18}\text{F}$ -FDG PET image) or spatial extent, with a large variability in the recommended threshold and resulting

Received May 30, 2011; revision accepted Aug. 17, 2011.

For correspondence or reprints contact: Mathieu Hatt, INSERM, U650 LaTIM, CHRU Morvan, 5 Avenue Foch, 29609 Brest, France.

Published online Oct. 11, 2011.

COPYRIGHT © 2011 by the Society of Nuclear Medicine, Inc.

volumes (5–8). A few recent studies have investigated the correlation between tumor histopathology measurements and the threshold of PET uptake (4,9–12). For example, the study of Yu et al. (12) on 15 patients proposed an optimal threshold of  $31\% \pm 11\%$  of the PET maximum uptake within the tumor for a good correlation with the corresponding histopathology-derived tumor maximum diameter. Considering 3-dimensional reconstructed histopathology volumes instead of only the maximum diameter, Stroom et al. (10) recommended a fixed threshold of 42% of the maximum PET uptake based on their findings in a group of 5 patients with rather small tumors. Finally, in the study by Wu et al. (11) on 31 patients, 50% of the maximum ( $T_{50}$ ) was proposed as the best threshold for PET uptake delineation in NSCLC with respect to the histopathologic maximum diameter. This conclusion was reached by comparing the results obtained using a range of different fixed thresholds (from 20% to 55%), although only non-statistically significant differences were found with the other tested values. The same authors subsequently showed that such a threshold was less appropriate than manual delineation, which led to incorrect delineation in some cases (13). Manual contouring is far from ideal, as it suffers from large intra- and interobserver variability (14) and is also a tedious and time-consuming procedure, especially in 3 dimensions.

Alternatively, other authors have considered the use of adaptive thresholding approaches taking into account the tumor-to-background ratio instead of a fixed threshold but requiring the determination of a background region of interest, as well as optimization for a given scanner model, acquisition protocol, and image reconstruction using phantom acquisitions (8,15,16). Using such an approach, van Baardwijk et al. (4) obtained a significant correlation with histopathology measurements for 23 NSCLC tumors, as well as reduced interobserver variability. Finally, the use of more advanced image segmentation methodologies to automatically delineate MATV has been proposed in several studies (17–24), with variable levels of validation. For example, we have already demonstrated that such automated image segmentation approaches can offer higher accuracy (18,21), robustness (25), and reproducibility (14) than threshold-based (fixed or adaptive) methods.

Some previous studies investigating NSCLC tumor delineation on PET/CT hypothesized a significant influence of the anatomic or metabolic lesion size and activity distribution heterogeneity on both the results and the observed differences between delineation methodologies (8). However, those studies neither quantified this heterogeneity nor thoroughly investigated such a correlation with respect to the anatomic tumor and functional uptake sizes. The main objective of our study was therefore to investigate the correlation among anatomic tumor size as determined on CT, the  $^{18}\text{F}$ -FDG uptake level of heterogeneity, and the differences between various automatic PET MATV delineation approaches.

## MATERIALS AND METHODS

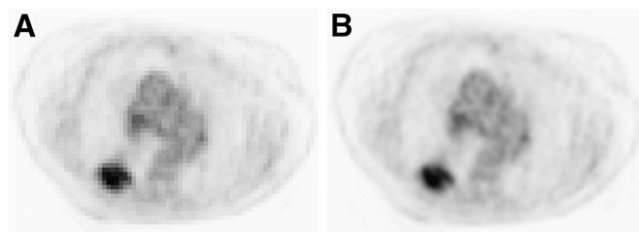
### Patient Studies

Twenty-five patients with confirmed NSCLC, stage Ib–IIIB, were included in this study. All patients underwent an  $^{18}\text{F}$ -FDG PET/CT examination for staging purposes before treatment. Patients were instructed to fast for a minimum of 6 h before examination. Free-breathing PET and CT images were acquired 45–60 min after  $^{18}\text{F}$ -FDG injection. A total of seven 5-min bed positions with overlap were used for whole-body PET (Biograph PET/CT; Siemens) acquisitions, which were corrected for attenuation using the CT data and iteratively reconstructed using the ordered-subsets expectation maximization algorithm (4 iterations, 8 subsets). Within a week after PET/CT acquisitions, 17 of the 25 patients underwent surgery (lobectomy), which allowed further macroscopic examination. All specimens were processed in the same way; namely the fresh specimens were put on ice, and 1 pathologist measured the maximum diameter of the tumor in 3 dimensions (4). Specimen shrinkage, estimated at about 10%, was not considered since the measurements were performed before fixation in formalin, allowing subsequent immunohistochemical examination, for which the biopsy specimens were paraffin-embedded.

This study was approved by the Institutional Ethics Review Board, and informed written consent was obtained from all patients before their inclusion in the study.

### PET and CT Tumor Delineation

PET images were first up-sampled using a cubic B-spline interpolation scheme (26), in such a way that the voxels were of the same size as the associated CT images (Fig. 1). Because the goal of this study was to compare anatomic and MATV as seen and delineated on CT and  $^{18}\text{F}$ -FDG PET images, respectively, manual delineation on fused PET/CT images was not considered. Only primary tumors were delineated on both CT and PET images independently. Tumor anatomic volumes were manually delineated on CT without knowledge of the PET information by 2 observers, both with more than 10 y experience in PET and CT. Functional tumor volumes were manually delineated on PET images by one of the observers (and checked by the other observer) (13), as well as using semi- or fully automatic image segmentation tools. A fixed threshold at  $T_{50}$  as suggested by Wu et al. (11), and an adaptive threshold taking into account the background uptake (8), were considered. The adaptive threshold approach was optimized on phantom acquisitions performed on the same PET/CT scanner that was used for the patient acquisitions. The method requires the definition of a manual background region of interest defining the



**FIGURE 1.** Illustration of up-sampled PET images (central axial slice). Original PET image with voxel size of  $5.31 \times 5.31 \times 5$  mm (A) and PET image up-sampled with voxel size equal to CT ( $0.98 \times 0.98 \times 5$  mm) (B) using cubic B-spline interpolation.

background uptake to compute a first approximation of the tumor-to-background contrast. Both observers were therefore instructed to place this background region of interest in the lungs, at a distance of several centimeters from the boundaries of the tumors. They were, however, free to choose the actual size and position of the region of interest, which led to 2 different results, denoted A1 and A2. Finally, the fuzzy locally adaptive Bayesian (FLAB) algorithm (18,21) was also used. This algorithm allows automatic tumor delineation by computing a probability of belonging to a given class (e.g., tumor or background) for each voxel. This probability is determined by taking into account the voxel intensity with respect to the statistical distributions (characterized by their mean and variance) of the voxels in the various regions of the image, as well as spatial correlation with neighboring voxels. FLAB has demonstrated its ability to accurately differentiate, if necessary, both the overall tumor spatial extent from its surrounding background and the tumor subvolumes with different uptakes (18).

### Investigated Parameters and Analysis

First, for the 17 patients for whom macroscopic measurements were available, the maximum diameters were measured as the largest dimension in any orientation, considering the different volume delineations (manual on CT and PET, T<sub>50</sub>, A1 and A2, and FLAB), and compared with the histopathology reference. We reported both absolute (in cm) and relative (%) errors with respect to the maximum diameter to establish a hierarchy between the different methods. Second, for all patients the anatomic tumor volumes defined on CT images and the MATV obtained by each delineation approach were compared with each other. Delineations on original non-up-sampled PET images were performed to verify

that the up-sampling would not bias the results of the various methods. Finally, the <sup>18</sup>F-FDG uptake heterogeneity was estimated using the coefficient of variation (COV), defined as the ratio between the SD of the standardized uptake values and the mean standardized uptake value within the delineated MATV. Two different volumes were used to calculate COV. The first was the one obtained using FLAB (COV<sub>FLAB</sub>), since it was found to be the most accurate with respect to histology measurements, whereas the second was the CT-based volume (COV<sub>CT</sub>) copied onto the PET images.

Summary statistics are expressed as mean ± SD. Pearson coefficients were used to estimate correlations between parameters. Paired *t* tests were used to assess the differences between the tumor volume distributions obtained with the various delineation approaches. As most distributions were not normally distributed, they were log-transformed before analysis. All tests were 2-sided, and *P* values of less than 0.05 were considered statistically significant.

## RESULTS

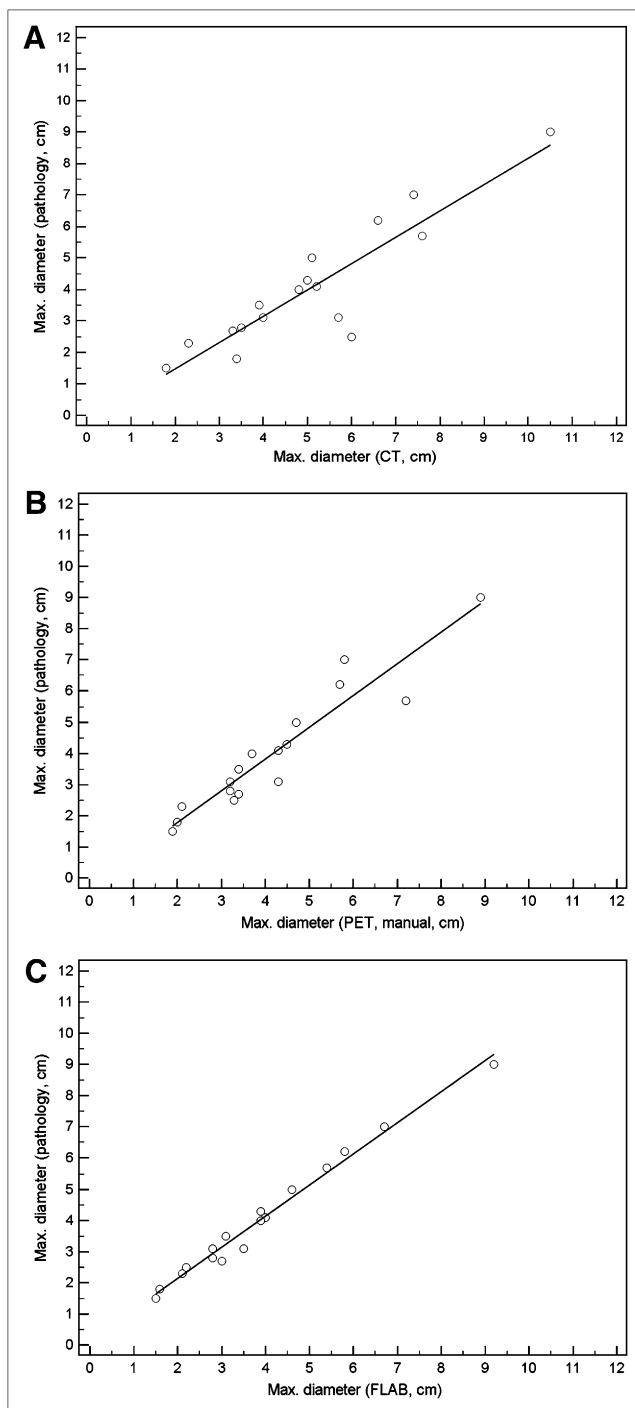
### Comparison with Maximum Diameter (Histopathology Reference)

Table 1 shows the maximum measured diameters of the 17 tumors based on either macroscopic examination or PET and CT images. All measured diameters correlated strongly with macroscopic measurements for all delineation approaches considered (*r* from 0.89 for T<sub>50</sub> to 0.99 for FLAB, *P* < 0.0001) (Figs. 2A–2C). Despite high correlations with maximum diameter for all methodologies as shown

**TABLE 1**  
Maximum-Diameter Measurements on Pathology and Image Delineations for All 17 Patients

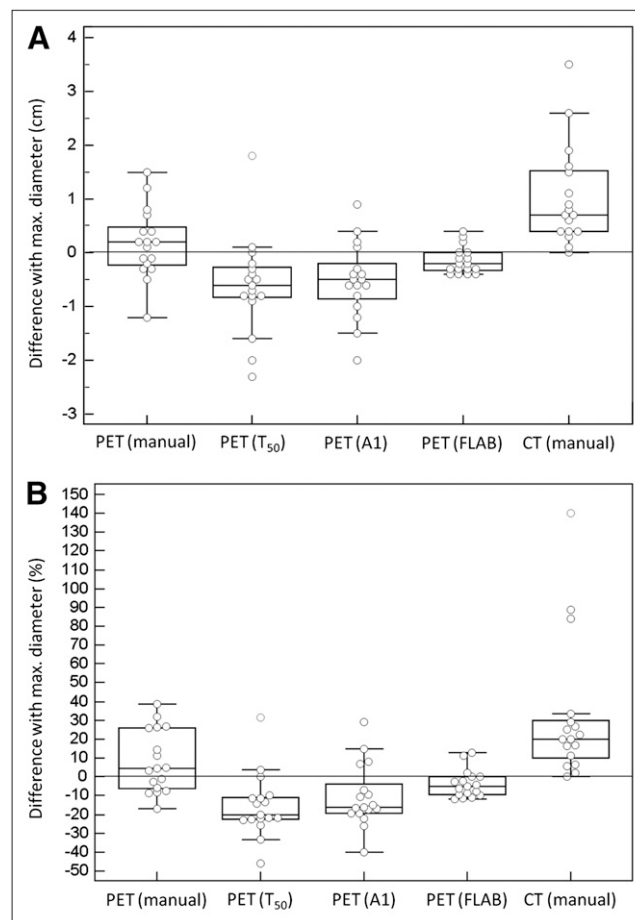
Patient no.	Measurement (cm)							
	Pathologic	CT1 (manual)	CT2 (manual)	PET (manual)	PET (T <sub>50</sub> )	PET (A1)	PET (A2)	PET (FLAB)
1	6.2	6.6	6.7	5.7	4.6	5	4.8	5.8
2	2.7	3.3	3.3	3.4	2.8	3.1	2.8	3
3	9	10.5	10.1	8.9	7	7.5	7.7	9.2
4	1.5	1.8	1.9	2.1	1.3	1.6	1.3	1.5
5	1.8	3.4	3.4	2	1.2	1.4	1.3	1.6
6	3.1	4	3.9	3.2	2.4	2.6	2.5	2.8
7	4.3	5	5.1	4.5	3.8	3.9	3.8	3.9
8	3.1	5.7	5.7	5.1	2.8	4	3.7	3.5
9	3.5	3.9	4	3.4	2.7	2.9	3	3.1
10	5.7	7.6	7.7	7.4	7.5	4.7	6.7	5.4
11	5	5.1	5.3	4.7	2.7	3	2.9	4.6
12	2.8	3.5	3.2	3.2	2.4	2.5	2.6	2.8
13	4.1	5.2	5.1	4.3	3.2	3.3	3.3	4
14	4	4.8	4.9	3.7	3.2	3.4	3.2	3.9
15	7	7.4	7.4	5.8	6.2	6.5	6.3	6.7
16	2.3	2.3	2.4	2.1	1.8	1.7	1.9	2.1
17	2.5	6	5.9	4.5	2.5	2.7	2.6	2.2
Mean ± SD	4.0 ± 2.0	5.1 ± 2.2	5.1 ± 2.1	4.2 ± 1.9	3.4 ± 1.9	3.5 ± 1.6	3.6 ± 1.8	3.9 ± 2.0
Median	3.5	5.0	5.1	3.7	2.8	3.1	3.0	3.5
Range	1.5–9	1.8–10.5	1.9–10.1	1.9–8.9	1.2–7.5	1.4–7.5	1.3–7.7	1.5–9.2
Pearson <i>r</i>	—	0.90	0.91	0.95	0.89	0.95	0.93	0.99
95% CI for <i>r</i>	—	0.74–0.96	0.76–0.96	0.86–0.98	0.72–0.96	0.85–0.98	0.81–0.98	0.98–1.00

CI = confidence interval.



**FIGURE 2.** Correlations with manual delineations on CT (A) and PET (B) and with FLAB delineations on PET (C).

in Table 1 and Figure 2, significant differences were observed among the delineations (Figs. 3A and 3B). On the one hand, CT delineation consistently overestimated the maximum diameter of all tumors ( $+32\% \pm 37\%$ ), with errors up to 3.5 cm ( $+140\%$ ). Manual delineation on PET images led to no significant bias but a high SD (mean error,  $8\% \pm 17\%$ ), with maximum errors of  $-1.5$  cm ( $-17\%$ ) and  $+1.2$  cm ( $+39\%$ ). On the other hand, PET automatic



**FIGURE 3.** Absolute (in cm) differences (A) and relative (%) errors (B) between pathology measurements and image-based delineations.

delineations mostly led to underestimation of the real diameter.  $T_{50}$  led to the largest underestimation ( $-15\% \pm 17\%$ ), with errors up to  $+1.8$  cm ( $+32\%$ ) and  $-2.3$  cm ( $-46\%$ ). Adaptive thresholding led to better accuracy, with similar results for both observers ( $-11\% \pm 17\%$  and  $-12\% \pm 16\%$  for A1 and A2, respectively) and errors up to  $-2$  cm ( $-40\%$ ). FLAB was associated with the most accurate results ( $-4\% \pm 8\%$ ), with no error above  $\pm 0.4$  cm ( $\pm 13\%$ ).

### Comparison of Tumor Volumes

Table 2 shows the tumor volumes for all patients. No significant differences in volume determination on CT were found between the 2 observers ( $P > 0.08$ ). Therefore, the results for only 1 observer will be considered. No significant difference was observed between volumes obtained on original or up-sampled PET images.

Anatomic tumor volumes delineated on CT images were the largest ( $55 \pm 74$  cm<sup>3</sup>) and were significantly different from all volumes defined on PET images ( $P < 0.0001$ ). In addition, all PET-based methodologies resulted in volumes that were significantly different from one another ( $P < 0.0001$ ). Among the PET-defined tumor volumes, and con-

TABLE 2

Tumor Volumes Measured on CT and PET Images ( $n = 25$ )

Tumor volume (cm <sup>3</sup> ) ( $n = 25$ )	Mean $\pm$ SD	Median	Range
CT1 (manual)	54.5 $\pm$ 74.0	28.2	1.9–338.9
CT2 (manual)	55.1 $\pm$ 74.8	29.1	1.8–339.4
PET (manual)	47.3 $\pm$ 76.4	21.3	2.1–356.2
PET (T <sub>50</sub> )	17.7 $\pm$ 25.1	9.2	8.5–125.8
PET (A1)	22.6 $\pm$ 33.2	11.9	1.2–166.9
PET (A2)	21.8 $\pm$ 33.9	11.3	0.9–172.4
PET (FLAB)	39.5 $\pm$ 70.5	15.8	1.1–345.1

sistent with what was observed according to the maximum diameters, the smallest volumes were obtained with T<sub>50</sub> (18  $\pm$  25 cm<sup>3</sup>), followed by the adaptive threshold (23  $\pm$  33 cm<sup>3</sup>), FLAB (40  $\pm$  71 cm<sup>3</sup>), and manual (47  $\pm$  76 cm<sup>3</sup>).

Regarding the overlap in delineated volumes, the larger CT volumes almost systematically enclosed the PET-based volumes, except for 8 cases in which small regions of PET uptake were just outside the anatomic volume, involving small margins comprising only a few voxels. The smallest PET uptake volumes generated with T<sub>50</sub> were also almost systematically enclosed within the volumes defined by the adaptive thresholding, which in turn were mostly enclosed within the FLAB-based volumes. Figure 4 illustrates 3 different cases representative of the various situations encountered.

#### Correlation of <sup>18</sup>F-FDG Uptake Heterogeneity with Tumor Size and Impact on Delineation

The calculated COVs using the 2 different delineated tumor volumes (COV<sub>FLAB</sub> and COV<sub>CT</sub>) correlated strongly ( $r = 0.98$ ,  $P < 0.0001$ ). The heterogeneity of PET uptake in these lung tumors was moderate to high, with a mean COV<sub>FLAB</sub> of  $0.26 \pm 0.06$  and a range of 0.21–0.48. COV<sub>CT</sub> was higher, with a mean of  $0.37 \pm 0.08$  (range, 0.3–0.6). Twenty-two of 25 tumors were characterized by a COV<sub>FLAB</sub> of 0.2–0.3 (0.25–0.4 for COV<sub>CT</sub>), and the 3 most heterogeneous were characterized by a COV<sub>FLAB</sub> of 0.32, 0.36, and 0.48 (0.46, 0.48, and 0.69, respectively, for COV<sub>CT</sub>). Figure 5 shows 2 different lesions and their associated COV<sub>CT</sub> and COV<sub>FLAB</sub>. A moderate but significant correlation was found between CT volumes and PET heterogeneity, as larger anatomic volumes exhibited higher heterogeneity ( $r = 0.44$  and  $r = 0.5$  for COV<sub>CT</sub> and COV<sub>FLAB</sub>, respectively,  $P < 0.03$ ). A similar correlation was found between MATVs and the corresponding heterogeneity, as larger functional volumes also exhibited significantly higher heterogeneity ( $r = 0.51$  and  $r = 0.58$  for COV<sub>CT</sub> and COV<sub>FLAB</sub>, respectively,  $P < 0.002$ ).

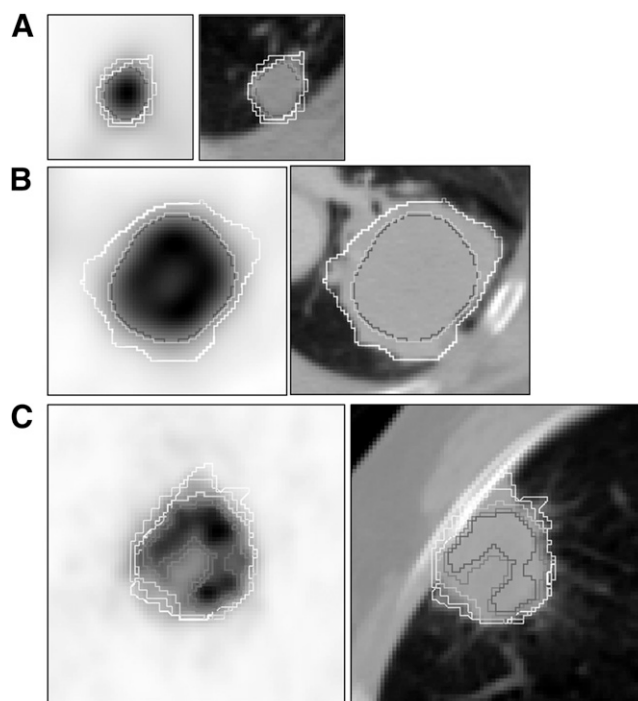
Tumor size had an impact on the differences observed between the delineation results using the different images and segmentation approaches considered. A moderate ( $r = 0.44$ ) correlation was observed between anatomic tumor volumes and the differences between FLAB and T<sub>50</sub> results (Fig. 6A). The larger the anatomic size of the lesion, the

larger were the differences between FLAB and T<sub>50</sub> volumes ( $P = 0.025$ ). Similar nonsignificant trends were observed for differences between adaptive thresholding volumes or manual delineation and FLAB ( $r < 0.4$ ,  $P > 0.08$ ). No correlation was found between anatomic tumor size and the differences between CT volumes and all of the PET volumes determined with the different segmentation approaches considered.

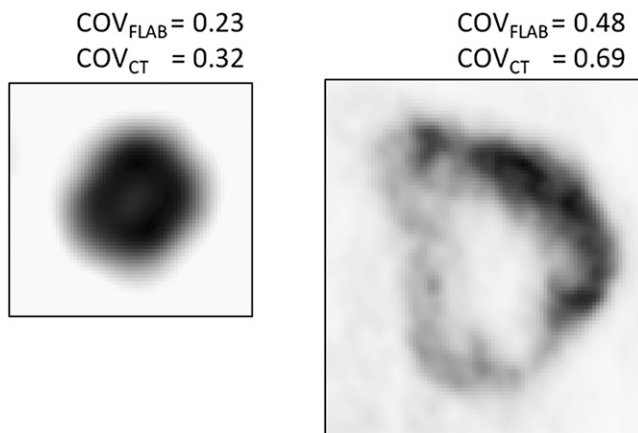
The impact of PET uptake heterogeneity was more significant than anatomic tumor size on the resulting MATV differences using the PET delineation methodologies considered. As illustrated in Figure 6B, differences between MATV obtained with T<sub>50</sub> and FLAB correlated strongly ( $r < -0.8$ ) with PET heterogeneity ( $P < 0.0001$ ) estimated either with COV<sub>CT</sub> or COV<sub>FLAB</sub>. The higher the heterogeneity within the tumor, the smaller was the MATV obtained with T<sub>50</sub> compared with that derived by FLAB. A similar correlation was observed for the differences between FLAB and A1 ( $r < -0.7$ ,  $P < 0.0001$ ), as well as between FLAB and manual delineation ( $r < 0.6$ ,  $P < 0.001$ ).

#### DISCUSSION

Interest in the use of MATV delineation on PET for NSCLC has been growing for several years, especially for radiotherapy applications such as dose redistribution, boosting, and painting, for which MATV is not used in place of anatomic volume but rather as a complement to



**FIGURE 4.** Small lesions (<2 cm in diameter) (A) and larger lesions with moderate (COV<sub>FLAB</sub> = 0.23) (B) and higher (COV<sub>FLAB</sub> = 0.30) (C) heterogeneity. For readability, A1 contours are not shown in B and C and manual PET contours are not shown in B as they were similar to FLAB and T<sub>50</sub>. White = manual on CT; blue = T<sub>50</sub>; purple = A1; green = FLAB.



**FIGURE 5.** Heterogeneity estimation for 2 tumors.

increase or redistribute dose within the lesion (27–29). These techniques are of interest especially for large tumors characterized by heterogeneous uptake within the MATV. However, the optimal MATV delineation methodology is still subject to debate, especially for these tumor cases.

Our results confirm that large discrepancies can be observed in image-based determination of NSCLC tumor volumes according to the methodology used for tumor delineation. Using morphologic imaging and manual delineation, we saw a large overestimation of tumor volume as previously described by several authors (13). Using a fixed threshold of 50% as recommended by Wu et al. (11), the estimation of the maximum tumor diameter on PET images was not correct. We observed a constant underestimation of the maximum diameter—a finding that differs from those of Wu et al., who reported mostly overestimations of the maximum diameter of the tumor. This difference is most probably related to the size of the tumors considered in the 2 studies. Wu et al. included mostly small tumors (median diameter, 2 cm; range, 1.1–6.5 cm) whereas we considered larger tumors ( $4 \pm 2$  cm; range, 1.5–9 cm). The discordant results could be explained by the failure of binary threshold approaches to deal with heterogeneity, which is more present in larger tumors.

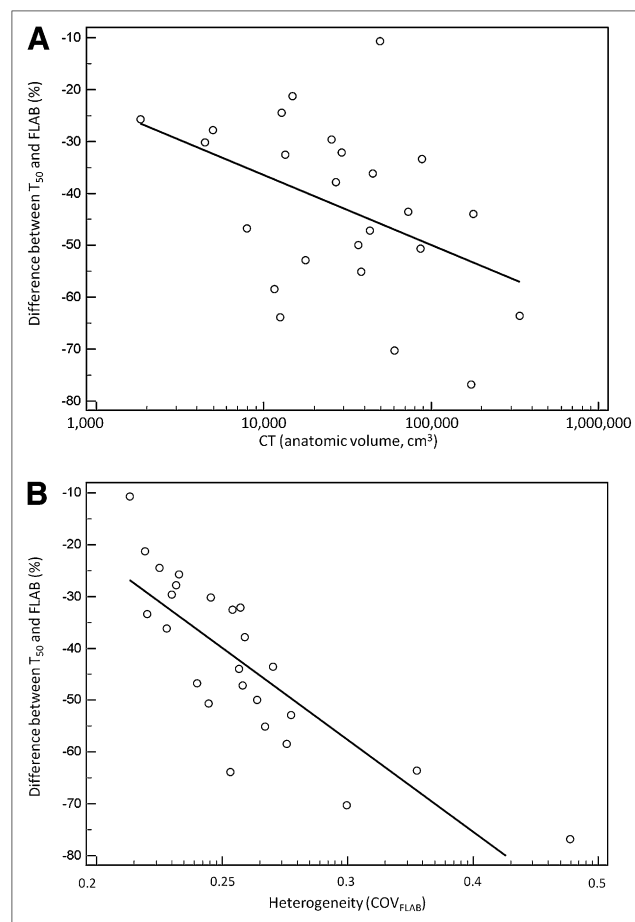
On the other hand, we found differences between CT and PET volumes similar to those found by Wu et al. in their subsequent study (13). CT volumes were significantly larger than PET-based volumes in both studies, despite the differences in tumor sizes considered. In our group of patients, we mostly observed that the MATV was completely enclosed in the larger anatomic tumor volumes. Only in a few cases was elevated tracer uptake observed outside the limits of the anatomic tumor, and only a few voxels were involved. This marginal difference may be explained either by imperfect spatial registration between PET and CT or by the impact of respiratory motion.

Using the adaptive thresholding methodology as described by Nestle et al. (8), PET tumor sizes did correlate well with the histopathology-based gold standard, albeit with an underestimation of the maximum diameters in

our group of lung tumors. Our results agree with those of Van Baardjwick et al. (4), who previously investigated a slightly different semiautomatic methodology first proposed by Daisne et al. (16).

In the current study, results from the 2 observers using adaptive thresholding were not significantly different, contrary to what was previously observed in the case of esophageal tumors (30,31). However, unlike the rather heterogeneous uptake in the mediastinum surrounding esophageal tumors, the lung uptake is more homogeneous, thus leading to negligible variability in the manually determined background values. Manual delineation was less dependent on the heterogeneity within MATV than were threshold-based methods, leading to satisfactory results with no significant bias (mean error < 10%), although there was a large SD (17%) as some MATV were either largely overestimated (mostly the smaller lesions with lower contrast) or underestimated (some of the most heterogeneous ones with complex shapes). Overall, manual delineation correlated strongly with FLAB ( $r = 0.96$ ).

Automatic delineation on PET images using FLAB provided the best estimation of tumor diameters, in accordance with our previous evaluation of FLAB perform-



**FIGURE 6.** Correlation between anatomic volume (A) or uptake heterogeneity (B) and differences between  $T_{50}$  and FLAB volumes.

ance (18). Other advanced segmentation algorithms able to deal with heterogeneous MATV could potentially yield similar satisfactory results (22,32). In our previous study, FLAB was compared with a fixed threshold at 42%, instead of 50%, but with similar trends in the observed results. Furthermore, in our previous work the segmentation algorithms were applied to the original PET images without up-sampling and therefore with larger voxels. In the present study, resampling was performed for an easier comparison with CT delineations and overlap estimation. This approach resulted in a more accurate estimation of the differences between PET- and CT-based delineation methodologies, without, however, significant differences in the resulting volumes with respect to delineation performed on nonresampled images.

Tracer uptake heterogeneity within the MATV has been recognized as an important factor and a plausible explanation of failed cancer treatments (33). Also in malignancies such as sarcomas, esophageal cancer, cervical cancer, and head and neck cancer, studies have shown that local and regional tracer uptake heterogeneity assessment with PET can predict outcome (34–36). In NSCLC, Nestle et al. has already observed a larger variability between MATV delineations due to spatial tracer uptake heterogeneity, without, however, quantifying this heterogeneity and the associated correlation with the MATV results (8). The impact of heterogeneity on MATV delineation results can be observed and reach statistically significant levels only for objects larger than a few centimeters in diameter, since the limited PET spatial resolution cannot provide accurate imaging of tracer heterogeneity in smaller volumes of interest. These larger tumors are also most frequently encountered in radiotherapy treatment, for which an accurate delineation of the overall MATV may be advantageous, particularly if one considers treatment scenarios involving dose painting or boosting.

Although limited by the small sample of patients and the need to confirm the results in a larger group, our study added several elements to the existing knowledge on the correlation between anatomic tumor size and  $^{18}\text{F}$ -FDG PET uptake in NSCLC. Our results suggest that the larger the tumor, the more heterogeneous the  $^{18}\text{F}$ -FDG PET uptake is likely to be. This suggestion is in agreement with the expected evolution of NSCLC, since necrosis, hemorrhage, or myxoid changes, known to cause areas of low attenuation on CT images, are more likely to appear in larger tumors. A large, heterogeneous MATV is less likely to be accurately delineated using simple fixed or even adaptive binary threshold methods.

In this study, we used the COV to quantify the heterogeneity of PET tracer uptake within the tumor. This heterogeneity factor does not offer any information on the spatial distribution of the heterogeneity and could potentially result in the same value for very different heterogeneous distributions. However, this simple parameter that provides a global measure of heterogeneity is sufficient for

the purposes and objectives targeted in this study, allowing us to observe significant correlations between tracer uptake heterogeneity and differences in the MATV segmentation results, either with  $\text{COV}_{\text{FLAB}}$  or  $\text{COV}_{\text{CT}}$ . The most heterogeneous lesions were characterized by  $\text{COV}_{\text{FLAB}}$  values above 0.3; however, values from 0.2 to 0.3 were distributed in a rather continuous fashion, making it hard to set a threshold value allowing the differentiation of homogeneous from heterogeneous distributions. A more detailed characterization of the spatial distribution of tumor heterogeneity, which was outside the scope of this study, can be obtained using, for instance, local and regional textural features (35).

In studies such as the present one and those published previously within the same context, a common limitation is the lack of respiratory gating. Four-dimensional PET can provide solutions to improve subvolume delineation for dose-painting applications (37). However, in our dataset the large size of the tumors should have reduced the potential impact of respiratory motion on the results. In theory, the MATV could have been overestimated for the smallest lesions by both respiratory motion and partial-volume effects. In practice, in our patients only a small fraction of the lesions (10%–20%) were smaller than 2–3 cm.

Finally, a second limitation of our study was the determination of tumor extent based on the measurement of maximum diameter and not the entire volume. Errors in maximum diameter may translate into significantly larger errors with respect to the entire functional volume, especially when heterogeneous uptake distributions are considered. It is indeed possible to obtain an accurate maximum diameter with inaccurate 3-dimensional delineations, especially for complex shapes. Unfortunately full-volume histopathology datasets, for which protocols and corresponding volume estimations are associated with numerous approximations and inaccuracies, are not available yet for NSCLC. Hence, the maximum diameter measurements can be considered as a satisfactory surrogate and have been used in most clinical studies.

## CONCLUSION

Volumes based on CT images were systematically and significantly larger than those based on PET images. In addition, tumor size and PET uptake heterogeneity had a significant impact on the MATV PET delineation results using semi- or fully automatic image segmentation tools. Our results indicate that for a case of large, heterogeneous NSCLC, fixed and adaptive thresholding should not be used for the MATV delineation of  $^{18}\text{F}$ -FDG PET uptake. These methods inherently assume homogeneous uptake in both background and MATV and therefore tend to largely underestimate the spatial extent of the functional tumor in such cases. The use of thresholding approaches should be restricted to smaller lesions with sufficient tumor-to-background contrast or for larger tumors exhibiting homogeneous uptake. For an accurate automatic delineation of MATV in NSCLC, advanced image segmentation algo-

rhythms able to deal with tracer uptake heterogeneity should be used.

## DISCLOSURE STATEMENT

The costs of publication of this article were defrayed in part by the payment of page charges. Therefore, and solely to indicate this fact, this article is hereby marked “advertisement” in accordance with 18 USC section 1734.

## ACKNOWLEDGMENTS

This work was partly funded by the French National Research Agency under contract ANR-08-ETEC-005-01. No other potential conflict of interest relevant to this article was reported.

## REFERENCES

- Hicks RJ, Kalff V, MacManus MP, et al.  $^{18}\text{F}$ -FDG PET provides high-impact and powerful prognostic stratification in staging newly diagnosed non-small cell lung cancer. *J Nucl Med*. 2001;42:1596–1604.
- MacManus M, Nestle U, Rosenzweig KE, et al. Use of PET and PET/CT for radiation therapy planning: IAEA expert report 2006–2007. *Radiother Oncol*. 2009;91:85–94.
- Chiti A, Kirienko M, Gregoire V. Clinical use of PET-CT data for radiotherapy planning: what are we looking for? *Radiother Oncol*. 2010;96:277–279.
- van Baardwijk A, Bosmans G, Boersma L, et al. PET-CT-based auto-contouring in non-small-cell lung cancer correlates with pathology and reduces interobserver variability in the delineation of the primary tumor and involved nodal volumes. *Int J Radiat Oncol Biol Phys*. 2007;68:771–778.
- Biehl KJ, Kong FM, Dehdashti F, et al.  $^{18}\text{F}$ -FDG PET definition of gross tumor volume for radiotherapy of non-small cell lung cancer: is a single standardized uptake value threshold approach appropriate? *J Nucl Med*. 2006;47:1808–1812.
- Hellwig D, Graeter TP, Ukena D, et al.  $^{18}\text{F}$ -FDG PET for mediastinal staging of lung cancer: which SUV threshold makes sense? *J Nucl Med*. 2007;48:1761–1766.
- Yaremko B, Riauka T, Robinson D, Murray B, McEwan A, Roa W. Threshold modification for tumour imaging in non-small-cell lung cancer using positron emission tomography. *Nucl Med Commun*. 2005;26:433–440.
- Nestle U, Kremp S, Schaefer-Schuler A, et al. Comparison of different methods for delineation of  $^{18}\text{F}$ -FDG PET-positive tissue for target volume definition in radiotherapy of patients with non-small cell lung cancer. *J Nucl Med*. 2005;46:1342–1348.
- Yu HM, Liu YF, Hou M, Liu J, Li XN, Yu JM. Evaluation of gross tumor size using CT,  $^{18}\text{F}$ -FDG PET, integrated  $^{18}\text{F}$ -FDG PET/CT and pathological analysis in non-small cell lung cancer. *Eur J Radiol*. 2009;72:104–113.
- Stroom J, Blaauwgeers H, van Baardwijk A, et al. Feasibility of pathology-correlated lung imaging for accurate target definition of lung tumors. *Int J Radiat Oncol Biol Phys*. 2007;69:267–275.
- Wu K, Ung YC, Hornby J, et al. PET CT thresholds for radiotherapy target definition in non-small-cell lung cancer: how close are we to the pathologic findings? *Int J Radiat Oncol Biol Phys*. 2010;77:699–706.
- Yu J, Li X, Xing L, et al. Comparison of tumor volumes as determined by pathologic examination and FDG-PET/CT images of non-small-cell lung cancer: a pilot study. *Int J Radiat Oncol Biol Phys*. 2009;75:1468–1474.
- Wu K, Ung YC, Hwang D, et al. Autocontouring and manual contouring: which is the better method for target delineation using  $^{18}\text{F}$ -FDG PET/CT in non-small cell lung cancer? *J Nucl Med*. 2010;51:1517–1523.
- Hatt M, Cheze-Le Rest C, Aboagye EO, et al. Reproducibility of  $^{18}\text{F}$ -FDG and 3'-deoxy-3'- $^{18}\text{F}$ -fluorothymidine PET tumor volume measurements. *J Nucl Med*. 2010;51:1368–1376.
- Schaefer A, Kremp S, Hellwig D, Rube C, Kirsch CM, Nestle U. A contrast-oriented algorithm for FDG-PET-based delineation of tumour volumes for the radiotherapy of lung cancer: derivation from phantom measurements and validation in patient data. *Eur J Nucl Med Mol Imaging*. 2008;35:1989–1999.
- Daisne JF, Sibomana M, Bol A, Doumont T, Lonneux M, Gregoire V. Tri-dimensional automatic segmentation of PET volumes based on measured source-to-background ratios: influence of reconstruction algorithms. *Radiother Oncol*. 2003;69:247–250.
- Yu H, Caldwell C, Mah K, et al. Automated radiation targeting in head-and-neck cancer using region-based texture analysis of PET and CT images. *Int J Radiat Oncol Biol Phys*. 2009;75:618–625.
- Hatt M, Cheze le Rest C, Descourt P, et al. Accurate automatic delineation of heterogeneous functional volumes in positron emission tomography for oncology applications. *Int J Radiat Oncol Biol Phys*. 2010;77:301–308.
- El Naqa I, Yang D, Apte A, et al. Concurrent multimodality image segmentation by active contours for radiotherapy treatment planning. *Med Phys*. 2007;34:4738–4749.
- Montgomery DW, Amira A, Zaidi H. Fully automated segmentation of oncological PET volumes using a combined multiscale and statistical model. *Med Phys*. 2007;34:722–736.
- Hatt M, Cheze le Rest C, Turzo A, Roux C, Visvikis D. A fuzzy locally adaptive Bayesian segmentation approach for volume determination in PET. *IEEE Trans Med Imaging*. 2009;28:881–893.
- Belhassen S, Zaidi H. A novel fuzzy C-means algorithm for unsupervised heterogeneous tumor quantification in PET. *Med Phys*. 2010;37:1309–1324.
- Dewalle-Vignion AS, Betrouni N, Lopes R, Huglo D, Stute S, Vermandel M. A new method for volume segmentation of PET images, based on possibility theory. *IEEE Trans Med Imaging*. 2011;30:409–423.
- Sebastian TB, Manjeshwar RM, Akhurst TJ, Miller JV. Objective PET lesion segmentation using a spherical mean shift algorithm. *Med Image Comput Comput Assist Interv*. 2006;9:782–789.
- Hatt M, Cheze Le Rest C, Albarghach N, Pradier O, Visvikis D. PET functional volume delineation: a robustness and repeatability study. *Eur J Nucl Med Mol Imaging*. 2011;38:663–672.
- Thévenaz P, Blu T, Unser M. Interpolation revisited. *IEEE Trans Med Imaging*. 2000;19:739–758.
- Thorwarth D, Geets X, Paiusco M. Physical radiotherapy treatment planning based on functional PET/CT data. *Radiother Oncol*. 2010;96:317–324.
- Petit SF, Aerts HJ, van Loon JG, et al. Metabolic control probability in tumour subvolumes or how to guide tumour dose redistribution in non-small cell lung cancer (NSCLC): an exploratory clinical study. *Radiother Oncol*. 2009;91:393–398.
- Lambin P, Petit SF, Aerts HJ, et al. The ESTRO Breur Lecture 2009: from population to voxel-based radiotherapy—exploiting intra-tumour and intra-organ heterogeneity for advanced treatment of non-small cell lung cancer. *Radiother Oncol*. 2010;96:145–152.
- Hatt M, Visvikis D, Pradier O, Cheze-le Rest C. Baseline  $^{18}\text{F}$ -FDG PET image-derived parameters for therapy response prediction in oesophageal cancer. *Eur J Nucl Med Mol Imaging*. 2011;38:1595–1606.
- Hatt M, Visvikis D, Albarghach NM, Tixier F, Pradier O, Cheze-le Rest C. Prognostic value of  $^{18}\text{F}$ -FDG PET image-based parameters in oesophageal cancer and impact of tumour delineation methodology. *Eur J Nucl Med Mol Imaging*. 2011;38:1191–1202.
- Nelson AD, Brockway KD, Nelson AS, Piper JW. PET tumor segmentation: validation of a gradient-based method using a NSCLC PET phantom. *J Nucl Med*. 2009;50:340P.
- Basu S, Kwee TC, Gatenby R, Saboury B, Torigian DA, Alavi A. Evolving role of molecular imaging with PET in detecting and characterizing heterogeneity of cancer tissue at the primary and metastatic sites, a plausible explanation for failed attempts to cure malignant disorders. *Eur J Nucl Med Mol Imaging*. 2011;38:987–991.
- El Naqa I, Grigsby P, Apte A, et al. Exploring feature-based approaches in PET images for predicting cancer treatment outcomes. *Pattern Recognit*. 2009;42:1162–1171.
- Tixier F, Le Rest CC, Hatt M, et al. Intratumor heterogeneity characterized by textural features on baseline  $^{18}\text{F}$ -FDG PET images predicts response to concomitant radiochemotherapy in esophageal cancer. *J Nucl Med*. 2011;52:369–378.
- Eary JF, O'Sullivan F, O'Sullivan J, Conrad EU. Spatial heterogeneity in sarcoma  $^{18}\text{F}$ -FDG uptake as a predictor of patient outcome. *J Nucl Med*. 2008;49:1973–1979.
- Aristophanous M, Yap JT, Killoran JH, Chen AB, Berbeco RI. Four-dimensional positron emission tomography: implications for dose painting of high-uptake regions. *Int J Radiat Oncol Biol Phys*. 2010;80:900–908.