
¹⁸F-FDG PET as a Tool to Predict the Clinical Outcome of Infliximab Treatment of Rheumatoid Arthritis: An Explorative Study

Ernst H. Elzinga¹, Conny J. van der Laken¹, Emile F.I. Comans², Ronald Boellaard², Otto S. Hoekstra², Ben A.C. Dijkmans¹, Adriaan A. Lammertsma², and Alexandre E. Voskuyl¹

¹Department of Rheumatology, VU University Medical Centre, Amsterdam, The Netherlands; and ²Department of Nuclear Medicine and PET Research, VU University Medical Centre, Amsterdam, The Netherlands

¹⁸F-FDG PET is a sensitive, promising method for visualizing disease activity in rheumatoid arthritis. This study aimed to assess the association between changes in ¹⁸F-FDG joint uptake after 2 wk of infliximab treatment and clinical outcome. **Methods:** Scans were obtained at the initiation of treatment and at 2 wk. Uptake in metacarpophalangeal and wrist joints was quantified using standardized uptake values. **Results:** Changes in mean standardized uptake value at 0–2 wk significantly correlated with the disease activity score (DAS) at 14 and 22 wk and contributed significantly to the prediction of DAS at these time points. No significant correlation was found between changes in acute-phase reactants at 0–2 wk and the DAS at later time points. **Conclusion:** Early changes in ¹⁸F-FDG uptake in joints during infliximab treatment of rheumatoid arthritis patients, using PET, may predict clinical outcome.

Key Words: FDG; rheumatoid arthritis; SUV; infliximab

J Nucl Med 2011; 52:77–80

DOI: 10.2967/jnumed.110.076711

Rheumatoid arthritis (RA) is a disabling joint disease. Stringent monitoring of disease activity and, if necessary, changing to another, more effective, drug treatment has been shown to improve the outcome of patients (1).

Anti-tumor necrosis factor (TNF) α -blocking agents, such as infliximab, potentially bind TNF and block inflammation by inhibiting the downstream effects of this cytokine. Anti-TNF treatment is effective in reducing disease activity and improving outcome, although not in all patients (2).

In general, the response to anti-TNF treatment is assessed between 14 and 22 wk after initiation of the drug. At present, there are no markers that can predict response to anti-TNF treatment at an earlier stage (3–6). Considering the high costs of anti-TNF treatment, that is, \$30,500–

\$38,700 per discounted quality-adjusted life-year gained (7), early prediction of response could reduce the overall costs of treatment.

Several reports have shown that inflammation in synovial tissue in RA patients can be detected using ¹⁸F-FDG PET (8–12). Therefore, ¹⁸F-FDG PET may be an interesting tool to assess response early during anti-TNF treatment.

This explorative study investigated the potential ability of early ¹⁸F-FDG PET changes to predict clinical outcome at a later stage.

MATERIALS AND METHODS

Patients and Study Protocol

All patients (11 women, 5 men) fulfilled the American College of Rheumatology criteria for RA (13). The presence of at least 2 metacarpophalangeal or wrist joints with signs of arthritis was required. Patients were treated with infliximab, and infusions were administered at 0, 2, 6, 14, and 22 wk. At all time points, tenderness and swelling of proximal interphalangeal and metacarpophalangeal joints of hands, elbows, shoulders, and knees (28 joints in total) were determined. Erythrocyte sedimentation rate (ESR) and C-reactive protein (CRP) were measured, and the disease activity scores (DASs) of 28 joints were calculated (14). ¹⁸F-FDG PET scans of metacarpophalangeal and wrist joints were acquired at 0 and 2 wk. Informed consent was obtained of all participating patients. The protocol was approved by the local medical ethical committee.

PET

PET was performed using an ECAT EXACT HR+ scanner (CTI/Siemens). Before scanning, the patients fasted for at least 6 h. All plasma glucose levels, measured just before intravenous administration of ¹⁸F-FDG, were within normal limits. Patients were injected with 382 ± 44 MBq (mean \pm SD) of ¹⁸F-FDG. The hands were positioned on top of the chest to include the heart and aorta within the field of view of the scanner for blood pool analysis, allowing quantification of ¹⁸F-FDG uptake. After the patients had been positioned, a dynamic emission scan of 60 min was acquired, preceded by a transmission scan (85,000 kilocounts). Venous samples (8 mL) were collected at 35, 45, and 55 min. PET scans were corrected for attenuation, decay, scatter, randoms, and dead time. Summed images (40–60 min) were reconstructed as 128×128 matrices using filtered backprojection with a Hanning filter (cutoff, 0.5 cycles/pixel), resulting in a

Received Feb. 26, 2010; revision accepted Sep. 8, 2010.

For correspondence contact: Alexandre E. Voskuyl, Department of Rheumatology, 3-A-64, VU University Medical Centre, P.O. Box 7057, 1007 MB Amsterdam, The Netherlands.

E-mail: ae.voskuyl@vumc.nl

COPYRIGHT © 2011 by the Society of Nuclear Medicine, Inc.

transaxial spatial resolution of about 7 mm in full width at half maximum.

Image Analysis

Coronal, sagittal, and transverse images were used for analysis. Regions of interest were drawn on the ascending and descending aorta, the aortic arch, and the left atrium and left ventricle of the heart to obtain arterial input function. ¹⁸F-FDG uptake in hand and wrist joints was measured through manual drawing of regions of interest on PET-positive metacarpophalangeal joints (cluster of the second to fifth metacarpophalangeal joints per hand) and on PET-positive wrists, yielding a maximum of 4 regions per scan. Patlak graphical analysis (15) was applied to the dynamic ¹⁸F-FDG scan to quantitate the metabolic rate of glucose (Mrglu) in joints between 10 and 60 min. In addition, standardized uptake value (SUV) was calculated using the summed ¹⁸F-FDG images and the same ROIs and was normalized for injected dose and body surface (16–18). The mean SUV and Mrglu of all regions of interest per patient were calculated and used for statistical analysis.

Statistical Analysis

Pearson correlations were used to assess the relationship between changes in mean ¹⁸F-FDG joint uptake, ESR, CRP, and DAS from 0 to 2 wk and DAS at 6, 14, and 22 wk. A stepwise regression analysis was performed to investigate which of these parameters was most predictive of DAS at 14 and 22 wk. Because of the small sample size, a forward selection was chosen. Both DAS values at 14 wk and DAS values at 22 wk were used as dependent variables, and since DAS was not normally distributed, its natural logarithm was used. Changes in mean ¹⁸F-FDG joint uptake, ESR, CRP, and DAS from 0 to 2 wk were used as independent variables. A separate analysis was performed between SUV and Mrglu, using Pearson correlation coefficients and linear regression analysis. A *P* value smaller than 0.05 was considered to be significant. Unless stated otherwise, point estimates and distribution data are reported as mean and SD.

RESULTS

Demographic and Clinical Data

Patients were 53 ± 10 y old and had a disease duration of 8 ± 6 y. At inclusion, all patients had active disease. After 14 and 22 wk, DAS decreased to $4.3 (\pm 1.5)$ and $3.9 (\pm 1.3)$, respectively. The individual response to infliximab was heterogeneous. At 22 wk, there were 5 good and 8 moderate responders and 3 nonresponders, based on the response criteria of the European League Against Rheumatism (19). The DAS course in relation to response is depicted in Table 1.

PET Data

Before infliximab treatment, all patients showed enhanced ¹⁸F-FDG uptake in at least one metacarpophalangeal region or wrist (Fig. 1)

Both at 0 wk and at 2 wk, Mrglu and SUV were closely correlated ($r = 0.93$, $P < 0.001$, and $r = 0.88$, $P < 0.001$, respectively) (Fig. 2). A significant correlation was also found between the change in Mrglu and SUV from 0 to 2 wk ($r = 0.82$, $P < 0.001$). For analysis of the possible pharmacokinetic effect of infliximab on ¹⁸F-FDG metabolism, regression analysis was done at 0 and 2 wk with SUV as dependent and Mrglu as independent variable. No difference between the 2 regression lines was observed. These findings allowed the use of SUV data as a measurement of ¹⁸F-FDG joint uptake for further analyses.

The images showed a median of two ¹⁸F-FDG-positive clustered metacarpophalangeal and wrist joints (range, 1–4). The change in mean SUV between baseline and 2 wk was heterogeneous. Mean SUV decreased in 11 patients and increased in 5. SUV changes for the different response groups are demonstrated in Table 2.

Comparison of PET, Laboratory Parameters, and Clinical Data

The change in mean SUV after 2 wk of infliximab treatment correlated significantly with DAS at 14 and 22 wk ($r = 0.62$, $P < 0.05$, and $r = 0.65$, $P < 0.01$, respectively; Figs. 3A and 3B, respectively), but at 6 wk no significant correlation was found ($r = 0.26$). Changes in ESR, CRP, and DAS after 2 wk did not correlate with DAS at any time point up to 22 wk ($r \leq 0.4$, $P > 0.05$). None of the changes in any components of DAS (ESR, joint pain and swelling, visual analog scale) from 0 to 2 wk correlated with DAS at 14 or 22 wk. In addition, if only those metacarpophalangeal and wrist joints included in the PET analysis were considered, we found no correlation with disease activity at 14 or 22 wk.

The forward stepwise regression analysis showed that the change in mean SUV between baseline and 2 wk was the only significant contributor to the prediction of DAS at both 14 and 22 wk (14 wk: $\beta = 0.62$, $P < 0.05$; 22 wk: $\beta = 0.65$, $P < 0.01$). There was no significant predictive value to changes in ESR, CRP, and DAS from baseline to 2 wk (β values < 0.40). None of the changes in any other compo-

TABLE 1
Course of DAS in Responders and Nonresponders to Infliximab Therapy

Response according to criteria of European League Against Rheumatism*	DAS				
	t = 0 wk	t = 2 wk	t = 6 wk	t = 14 wk	t = 22 wk
Good (n = 5)	5.0 ± 0.3	3.9 ± 0.5	3.1 ± 0.7	3.2 ± 0.3	2.7 ± 0.2
Moderate (n = 8)	5.6 ± 0.8	4.3 ± 0.7	4.2 ± 0.8	4.2 ± 1.0	3.9 ± 0.3
None (n = 3)	6.7 ± 1.0	5.1 ± 0.9	4.6 ± 1.4	6.6 ± 1.3	6.3 ± 0.1

*Clinical response determined at 22 wk.

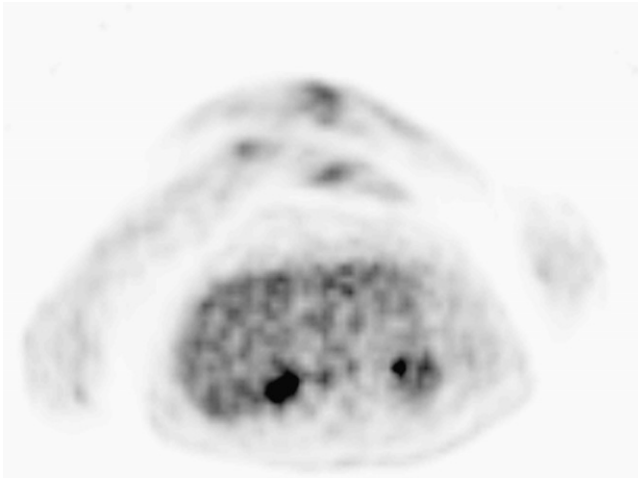


FIGURE 1. PET image of patient with ^{18}F -FDG uptake in metacarpophalangeal joints of hands and wrists. Arms and hands are positioned on top of thorax.

nents of DAS contributed to a better prediction of DAS at 14 and 22 wk. Furthermore, if only those metacarpophalangeal and wrist joints included in the PET analysis were considered, no contribution of changes of swelling or tenderness of these joints to DAS was found at 14 or 22 wk.

DISCUSSION

In a small group of RA patients treated with infliximab, this explorative study showed a significant correlation between early changes in ^{18}F -FDG uptake in hand joints and clinical disease activity after 14 and 22 wk of treatment. At a group level, the results indicate that early ^{18}F -FDG changes are predictive of clinical outcome. In contrast, no predictive value was found for changes in ESR, CRP, and DAS after 2 wk of treatment. ^{18}F -FDG PET may therefore be a valuable technique for predicting the efficacy of infliximab therapy as early as 2 wk after initiation of treatment. To our knowledge, this is the first PET study in RA patients showing the potential of ^{18}F -FDG PET for predicting the response to infliximab therapy early in the course of treatment. Previous ^{18}F -FDG PET studies visualized the treatment effects of infliximab in RA patients but did not investigate the predictive value of ^{18}F -FDG PET for clinical response (4–6,8,9,20). In addition, various other markers have been tested, but—in line with our results—no single marker has consistently been shown to be a predictor of response to infliximab (3–6).

Quantitative determination of the level of inflammation in metacarpophalangeal and wrist joints by ^{18}F -FDG PET could not simply be replaced by clinical scores of arthritis, since no correlation with clinical outcome and no predictive contribution were found for early changes (0–2 wk) in either tender or swollen joint counts of metacarpophalangeal and wrist joints, nor for DAS changes between 0 and 2 wk. Whether PET of inflamed joints outside the hands could also be predictive of clinical outcome in RA patients should be examined in a separate study.

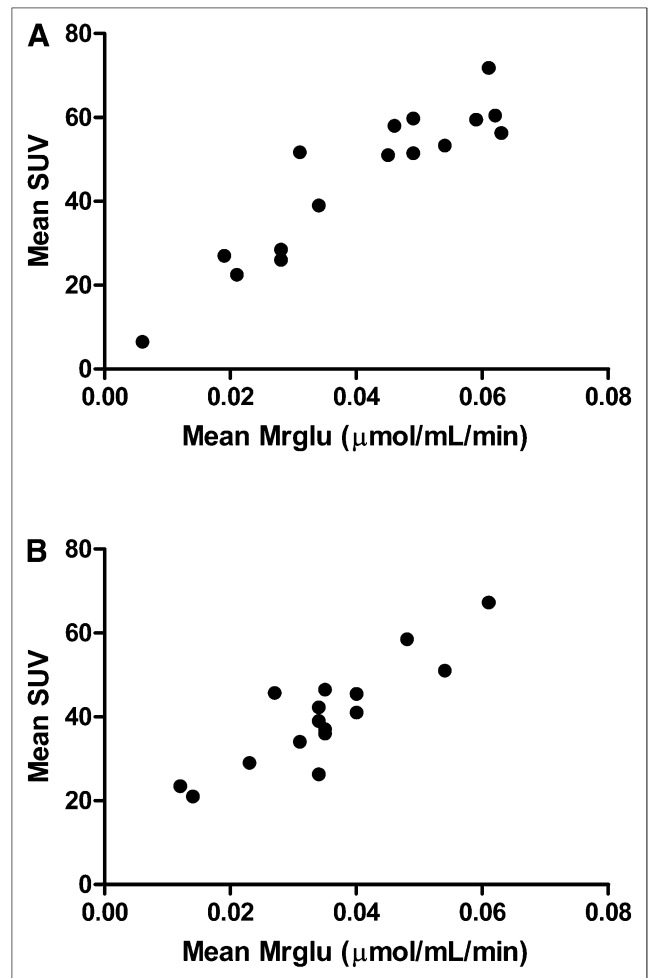


FIGURE 2. Correlation between mean SUV and mean Mrglu at 0 wk ($r = 0.93$, $P < 0.001$ [A]) and 2 wk ($r = 0.88$, $P < 0.001$ [B]).

As a consequence of the positioning of the hands in the scanner, individual metacarpophalangeal joints could not be analyzed, making a direct comparison with clinical joint examination at a joint level impossible. Nevertheless, the composite ^{18}F -FDG score of clustered metacarpophalangeal and wrist joints (10 joints per patient) proved to be a sensitive parameter to predict disease activity at 14–22 wk of infliximab treatment. Apparently, early changes in local

TABLE 2
Course of SUV in Responders and Nonresponders to Infliximab Therapy

Response according to criteria of European League Against Rheumatism	SUV	
	t = 0 wk	t = 2 wk
Good ($n = 5$)	55.6 ± 3.9	45.5 ± 11.0
Moderate ($n = 8$)	48.7 ± 15.9	39.5 ± 14.1
None ($n = 3$)	18.3 ± 10.4	33.5 ± 9.0

Mean SUV, averaged over all patients, was 44 ± 17 at baseline and 39 ± 12 at 2 wk.

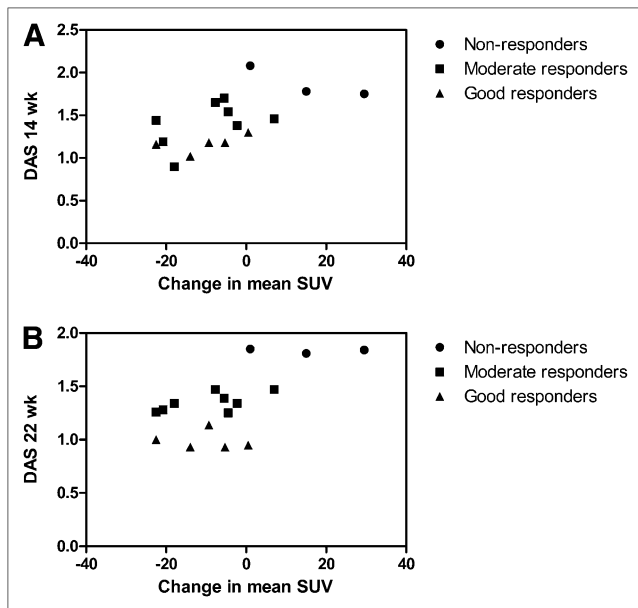


FIGURE 3. Correlation between change in mean SUV and natural logarithm of DAS at 14 wk ($r = 0.62$, $P < 0.05$ [A]) and 22 wk ($r = 0.65$, $P < 0.01$ [B]).

inflammatory levels in metacarpophalangeal and wrist joints, as measured by PET, were representative of later changes in clinical disease activity with respect to the whole body of the patient. The fact that early ^{18}F -FDG changes correlated with clinical disease activity from 14 wk onward stresses the advantage of the sensitive imaging qualities of ^{18}F -FDG PET. The good correlation between quantified ^{18}F -FDG joint uptake and calculated SUV showed that infliximab had no pharmacokinetic effect on ^{18}F -FDG metabolism. Thus, in future the procedure can be simplified to a static scanning of joints of interest at a rate of a few minutes of ^{18}F -FDG PET imaging per field of view, as a monitoring tool for therapeutic intervention in RA.

CONCLUSION

The promising results for the use of ^{18}F -FDG PET to monitor response to infliximab early in RA patients encourage further investigations in larger groups of patients. In addition, similar studies should be performed in RA patients treated with other drugs to assess whether the predictive value of ^{18}F -FDG PET can be extrapolated to those agents. Moreover, future application of more specific PET tracers may increase the sensitivity of detection of inflammatory changes in RA joints.

ACKNOWLEDGMENTS

This work was supported by an educational grant by Schering-Plough, The Netherlands. Schering-Plough did not

in any way interfere in the design of the study; the collection, analysis, or interpretation of data; the writing of the manuscript; or the decision to submit the manuscript for publication.

REFERENCES

- Goekoop-Ruiterman YP, de Vries-Bouwstra JK, Allaart CF, et al. Comparison of treatment strategies in early rheumatoid arthritis: a randomized trial. *Ann Intern Med.* 2007;146:406–415.
- Redlich K, Schett G, Steiner G, Hayer S, Wagner EF, Smolen JS. Rheumatoid arthritis therapy after tumor necrosis factor and interleukin-1 blockade. *Arthritis Rheum.* 2003;48:3308–3319.
- Lequerré T, Jouen F, Brazier M, et al. Autoantibodies, metalloproteinases and bone markers in rheumatoid arthritis patients are unable to predict their responses in infliximab. *Rheumatology (Oxford).* 2007;46:446–453.
- Buch MH, Seto Y, Bingham SJ, et al. C-reactive protein as a predictor of infliximab treatment outcome in patients with rheumatoid arthritis. *Arthritis Rheum.* 2005;52:42–48.
- De Rycke L, Verhelst X, Kruihof E, et al. Rheumatoid factor, but not anti-cyclic citrullinated peptide antibodies, is modulated by infliximab treatment in rheumatoid arthritis. *Ann Rheum Dis.* 2005;64:299–302.
- Familian A, Voskuyl AE, van Mierlo GJ, et al. Infliximab treatment reduces complement activation in patients with rheumatoid arthritis. *Ann Rheum Dis.* 2005;64:1003–1008.
- Lyseng-Williamson KA, Foster RH. Infliximab: a pharmacoeconomic review of its use in rheumatoid arthritis. *Pharmacoeconomics.* 2004;22:107–132.
- Beckers C, Ribbens C, André B, et al. Assessment of disease activity in rheumatoid arthritis with ^{18}F -FDG PET. *J Nucl Med.* 2004;45:956–964.
- Polisson RP, Schoenberg OI, Fischman A, et al. Use of magnetic resonance imaging and positron emission tomography in the assessment of synovial volume and glucose metabolism in patients with rheumatoid arthritis. *Arthritis Rheum.* 1995;38:819–825.
- Palmer WE, Rosenthal DI, Schoenberg OI, et al. Quantification of inflammation in the wrist with gadolinium-enhanced MR imaging and PET with 2-[^{18}F]-fluoro-2-deoxy-D-glucose. *Radiology.* 1995;196:647–655.
- Beckers C, Jeukens X, Ribbens C, et al. ^{18}F -FDG PET imaging of rheumatoid knee synovitis correlates with dynamic magnetic resonance and sonographic assessments as well as with the serum level of metalloproteinase-3. *Eur J Nucl Med Mol Imaging.* 2006;33:275–280.
- Elzinga EH, van der Laken CJ, Comans EF, Lammertsma AA, Dijkman BA, Voskuyl AE. 2-deoxy-2-[^{18}F]-fluoro-D-glucose joint uptake on positron emission tomography images: rheumatoid arthritis versus osteoarthritis. *Mol Imaging Biol.* 2007;9:357–360.
- Arnett FC, Edworthy SM, Bloch DA, et al. The American Rheumatism Association 1987 revised criteria for the classification of rheumatoid arthritis. *Arthritis Rheum.* 1988;31:315–324.
- Prevoo ML, van 't Hof MA, Kuper HH, van Leeuwen MA, van de Putte LB, van Riel PL. Modified disease activity scores that include twenty-eight-joint counts: development and validation in a prospective longitudinal study of patients with rheumatoid arthritis. *Arthritis Rheum.* 1995;38:44–48.
- Patlak CS, Blasberg RG, Fenstermacher JD. Graphical evaluation of blood-to-brain transfer constants from multiple-time uptake data. *J Cereb Blood Flow Metab.* 1983;3:1–7.
- Thie JA, Hubner KF, Isidoro FP, Smith GT. A weight index for the standardized uptake value in 2-deoxy-2-[^{18}F]-fluoro-D-glucose-positron emission tomography. *Mol Imaging Biol.* 2007;9:91–98.
- Hallett WA, Marsden PK, Cronin BF, O'Doherty MJ. Effect of corrections for blood glucose and body size on [^{18}F]FDG PET standardised uptake values in lung cancer. *Eur J Nucl Med.* 2001;28:919–922.
- Hoekstra CJ, Paglianiti I, Hoekstra OS, et al. Monitoring response to therapy in cancer using [^{18}F]-2-fluoro-2-deoxy-D-glucose and positron emission tomography: an overview of different analytical methods. *Eur J Nucl Med.* 2000;27:731–743.
- Van Gestel AM, Prevoo ML, van 't Hof MA, van Rijswijk MH, van de Putte LB, van Riel PL. Development and validation of the European League Against Rheumatism response criteria for rheumatoid arthritis: comparison with the preliminary American College of Rheumatology and the World Health Organization/Internal League Against Rheumatism Criteria. *Arthritis Rheum.* 1996;39:34–40.
- Goerres GW, Forster A, Uebelhart D, et al. F-18 FDG whole-body PET for the assessment of disease activity in patients with rheumatoid arthritis. *Clin Nucl Med.* 2006;31:386–390.