

^{18}F -FDG PET Definition of Gross Tumor Volume for Radiotherapy of Non–Small Cell Lung Cancer: Is a Single Standardized Uptake Value Threshold Approach Appropriate?

Kenneth J. Biehl¹, Feng-Ming Kong², Farrokh Dehdashti^{3,4}, Jian-Yue Jin⁵, Sasa Mutic¹, Issam El Naqa^{1,4}, Barry A. Siegel^{3,4}, and Jeffrey D. Bradley^{1,4}

¹Department of Radiation Oncology, Washington University School of Medicine, St. Louis, Missouri; ²Department of Radiation Oncology, University of Michigan, Ann Arbor, Michigan; ³Division of Nuclear Medicine, Mallinckrodt Institute of Radiology, Washington University School of Medicine, St. Louis, Missouri; ⁴Alvin J. Siteman Cancer Center, Washington University School of Medicine, St. Louis, Missouri; and ⁵Department of Radiation Oncology, Henry Ford Hospital, Detroit, Michigan

PET with ^{18}F -FDG has been used in radiation treatment planning for non–small cell lung cancer (NSCLC). Thresholds of 15%–50% the maximum standardized uptake value (SUV_{max}) have been used for gross tumor volume (GTV) delineation by PET (PET_{GTV}), with 40% being the most commonly used value. Recent studies indicated that 15%–20% may be more appropriate. The purposes of this study were to determine which threshold generates the best volumetric match to GTV delineation by CT (CT_{GTV}) for peripheral NSCLC and to determine whether that threshold can be generalized to tumors of various sizes. **Methods:** Data for patients who had peripheral NSCLC with well-defined borders on CT and SUV_{max} of greater than 2.5 were reviewed. PET/CT datasets were reviewed, and a volume of interest was determined to represent the GTV. The CT_{GTV} was delineated by using standard lung windows and reviewed by a radiation oncologist. The PET_{GTV} was delineated automatically by use of various percentages of the SUV_{max} . The PET_{GTV} -to- CT_{GTV} ratios were compared at various thresholds, and a ratio of 1 was considered the best match, or the optimal threshold. **Results:** Twenty peripheral NSCLCs with volumes easily defined on CT were evaluated. The SUV_{max} (mean \pm SD) was 12 ± 8 , and the mean CT_{GTV} was 198 cm^3 (97.5% confidence interval, 5–1,008). The SUV_{max} were 16 ± 5 , 13 ± 9 , and 3.0 ± 0.4 for tumors measuring greater than 5 cm, 3–5 cm, and less than 3 cm, respectively. The optimal thresholds (mean \pm SD) for the best match were $15\% \pm 6\%$ for tumors measuring greater than 5 cm, $24\% \pm 9\%$ for tumors measuring 3–5 cm, $42\% \pm 2\%$ for tumors measuring less than 3 cm, and $24\% \pm 13\%$ for all tumors. The PET_{GTV} at the 40% and 20% thresholds underestimated the CT_{GTV} for 16 of 20 and 14 of 20 lesions, respectively. The mean difference in the volumes (PET_{GTV} minus CT_{GTV} [$\text{PET}_{\text{GTV}} - \text{CT}_{\text{GTV}}$]) at the 20% threshold was 79 cm^3 (97.5% confidence interval, –922 to 178). The PET_{GTV} at the 20% threshold overestimated the CT_{GTV} for all 4 tu-

mors measuring less than 3 cm and underestimated the CT_{GTV} for all 6 tumors measuring greater than 5 cm. The CT_{GTV} was inversely correlated with the $\text{PET}_{\text{GTV}} - \text{CT}_{\text{GTV}}$ at the 20% threshold ($R^2 = 0.90$, $P < 0.0001$). The optimal threshold was inversely correlated with the CT_{GTV} ($R^2 = 0.79$, $P < 0.0001$). **Conclusion:** No single threshold delineating the PET_{GTV} provides accurate volume definition, compared with that provided by the CT_{GTV} , for the majority of NSCLCs. The strong correlation of the optimal threshold with the CT_{GTV} warrants further investigation.

Key Words: ^{18}F -FDG PET; lung cancer; threshold

J Nucl Med 2006; 47:1808–1812

PET with ^{18}F -FDG has been shown to improve the staging of non–small cell lung cancer (NSCLC), especially with respect to the detection of nodal and distant metastases (1–5). ^{18}F -FDG PET after definitive chemoradiation therapy has also been shown to predict survival in patients with NSCLC (6–8). Many centers are beginning to adopt ^{18}F -FDG PET for the purposes of radiation treatment planning. PET often identifies or clarifies tumor targets, resulting in a change in the planned target volume (7–16). Investigators have reported various methods for incorporating PET into the radiation treatment plan; these include visual side-by-side comparisons, image overlays, direct fusion of PET and CT images, and PET/CT simulation (see Table 2).

When a physician is placing contours on fused PET and CT images at the radiation treatment planning workstation, a problem is encountered in setting the threshold for the PET images. The physician doing the contouring can easily alter the apparent volume of the tumor on the PET images by simply adjusting the threshold setting. There is no validated standardized method for setting this threshold. The choice of this PET threshold is tantamount to determining tumor volume. Various methods have been used; these

Received May 31, 2006; revision accepted Aug. 17, 2006.

For correspondence or reprints contact: Jeffrey D. Bradley, MD, Department of Radiation Oncology, Washington University School of Medicine, 4921 Parkview Pl.–LL, St. Louis, MO 63110.

E-mail: jbradley@radonc.wustl.edu

COPYRIGHT © 2006 by the Society of Nuclear Medicine, Inc.

include using the absolute standardized uptake value (SUV) (i.e., gross tumor volume [GTV] = SUV of >2.5), using percentages of the maximum SUV (SUV_{max}) (i.e., GTV = volume encompassed by $>40\%$ the SUV_{max}), or ignoring the threshold setting and simply contouring the CT volume corresponding to the visually identified lesion. Published methods based on a threshold determined as a percentage of the SUV_{max} (percentage threshold) have used values ranging from 15% to 50% (9–11,13–15,17–21). Many factors affect SUV measurements and therefore tumor contours: the metabolic activity of a tumor, heterogeneity within a tumor, and tumor motion.

A few early investigations estimated that a threshold of 40% the SUV_{max} approximated tumor volume (10,22,23). On the basis of these data, we performed an initial prospective study comparing treatment plans defined with CT only and with fused PET and CT images and with the 40% SUV_{max} threshold (9). More recently, a 20% threshold was recommended (24). The purposes of this study were to evaluate the appropriateness of the percentage threshold approach by determining the optimal threshold for the best volumetric match between PET and CT for NSCLC and to determine whether the optimal threshold will adequately delineate GTV for tumors of various sizes.

MATERIALS AND METHODS

Institutional review board approval was obtained before review of PET/CT datasets for patients in this study. The study population consisted of 19 patients who underwent diagnostic PET/CT. All patients had peripheral stage I–stage IV disease with no evidence of distant metastatic disease detected by history, physical examination, routine laboratory testing, CT of the chest and upper abdomen (to include the liver and adrenal glands), and bone scintigraphy. One patient had bilateral disease with 2 small lesions without lymphadenopathy. Patients with metastatic disease revealed by PET/CT were excluded.

PET/CT

Each patient was scanned on the flat tabletop with a hybrid PET/CT scanner (Biograph LSO 2; Siemens Medical Solutions). The CT component of the PET/CT studies was performed without the administration of either oral or intravenous contrast agents. CT images (5-mm slices) typically were obtained during quiet breathing from the base of the skull through the proximal thighs at 130 kVp and 110 mA. Emission PET images were obtained over the same anatomic extent beginning 45–60 min after the administration of 555–740 MBq of ^{18}F -FDG, with imaging times of 2–4 min per bed position, depending on patient weight. PET images were scatter corrected and reconstructed by use of ordered-subset expectation maximization with a postreconstruction gaussian filter at 5 mm full width at half maximum.

PET Interpretation

After PET/CT, the image sets were transferred to the PET/CT workstation. After a radiation oncologist reviewed the PET images with a nuclear radiologist, the PET-based GTV (PET_{GTV}) was delineated for each tumor with isodensity contours. For estimation of the SUV, determination of the percentage threshold isodensity contours, and volumetric analysis, e-soft (version 2.5; Siemens)

was used. An ellipsoid volume of interest was determined for each lesion at its maximal diameter in the axial, coronal, and sagittal planes on the fused PET and CT images. This volume excluded any lymph nodes. The percentage threshold was adjusted from 10% to 50%, and the PET_{GTV} was determined for each threshold.

Delineation of Contours for Dataset from CT Alone

The CT-based GTV (CT_{GTV}) was delineated by use of the isodensity tool with lung window settings (1,600 and -300). The CT_{GTV} was then reviewed and altered by a single radiation oncologist without knowledge of the PET results in an effort to reduce bias. Maximum primary tumor diameter and total tumor volume on CT were measured and calculated for each patient. No positive lymph nodes were contoured.

Best Volumetric Match, or Optimal Threshold

The PET and CT data were used to determine the percentage threshold required to obtain a 1:1 volumetric correlation between CT- and PET-delineated tumors. A first-order, linear approximation was made after determination of the 2 PET thresholds between which the PET_{GTV} and the CT_{GTV} were equal. All data are reported as mean \pm SD or confidence intervals.

Difference in Volumes (PET_{GTV} Minus CT_{GTV}) [$PET_{GTV} - CT_{GTV}$]

The mean difference in the volumes ($PET_{GTV} - CT_{GTV}$) was calculated for tumors at the 40% and 20% thresholds. Linear and logarithmic regression analyses were used to determine the relationship between the CT_{GTV} and the optimal threshold as well as between the CT_{GTV} and the $PET_{GTV} - CT_{GTV}$ at the optimal threshold.

RESULTS

Data for 19 patients with 20 primary lesions measurable on PET and CT were evaluated and reported. One patient had 2 small (<3 -cm) solitary lesions bilaterally.

The mean \pm SD maximum tumor diameter in any direction on CT was 6.0 ± 3.4 cm, and the range was 1.2–11.7 cm. A total of 6 tumors measured greater than 5 cm, 10 measured 3–5 cm, and 4 measured less than 3 cm. The mean CT_{GTV} was 198 cm^3 , and the range was 5–1,008 cm^3 . The mean \pm SD PET_{GTV} at the 40% threshold was $44 \pm 30 \text{ cm}^3$, and the range was 6–199 cm^3 .

The mean \pm SD SUV_{max} for all tumors was 12 ± 8 . The mean \pm SD SUV_{max} were 16 ± 5 for tumors measuring greater than 5 cm, 13 ± 9 for tumors measuring 3–5 cm, and 3.0 ± 0.4 for tumors measuring less than 3 cm. The mean \pm SD CT_{GTV} s were 13 ± 7 , 90 ± 69 , and $502 \pm 348 \text{ cm}^3$ for tumors measuring less than 3 cm, 3–5 cm, and greater than 5 cm, respectively.

For all patients, the optimal threshold for the best match was $24\% \pm 13\%$. The optimal threshold was associated with tumor size. It was $15\% \pm 6\%$ for tumors measuring greater than 5 cm, $24\% \pm 9\%$ for tumors measuring 3–5 cm, and $42\% \pm 2\%$ for tumors measuring less than 3 cm (Table 1). The PET_{GTV} underestimated the CT_{GTV} for 16 of 20 lesions when the 40% threshold was used and for 11 of 20 lesions when the 20% threshold was used.

TABLE 1
Comparison of PET_{GTV} and CT_{GTV}

Tumors (n)	Mean ± SD			
	SUV _{max}	CT _{GTV} (cm ³)	PET _{GTV} at 40% threshold (cm ³)*	Optimal threshold (%)†
All (20)	12 ± 8	198 ± 277	44 ± 30	24 ± 13
<3 cm (4)	3.0 ± 0.4	13 ± 7	14 ± 14	42 ± 2
3–5 cm (10)	13 ± 9	90 ± 69	38 ± 22	24 ± 9
>5 cm (6)	16 ± 5	502 ± 348	69 ± 28	15 ± 6

*GTV determined by PET with 40% SUV_{max} threshold.
†Optimal threshold is percentage threshold that yields 1:1 volumetric match between PET- and CT-delineated tumors.

The mean ± SD PET_{GTV} – CT_{GTV} for all tumors at the 40% and 20% thresholds were 465 ± 307 and 79 ± 243 cm³, respectively. The PET_{GTV} at the 40% threshold minimally overestimated the CT_{GTV} for all 4 tumors measuring less than 3 cm by 2.7 ± 1.4 cm³ and underestimated the CT_{GTV} for all 16 tumors measuring greater than 3 cm by 261 ± 301 cm³. The PET_{GTV} at the 20% threshold overestimated the CT_{GTV} for all 4 tumors measuring less than 3 cm by 91 ± 13 cm³ and underestimated the CT_{GTV} for all 6 tumors measuring greater than 5 cm by 363 ± 312 cm³. The values for 5 of 10 tumors measuring 3–5 cm were overestimated, with a mean ± SD PET_{GTV} – CT_{GTV} of 23 ± 63 cm³. As determined with a logarithmic regression algorithm, the optimal threshold was inversely correlated with the CT_{GTV} [$R^2 = 0.79$, $P < 0.0001$]; the optimal threshold was $59 \times \log(\text{CT}_{\text{GTV}}) - 18$ (Fig. 1B). The CT_{GTV} was inversely correlated with the PET_{GTV} – CT_{GTV} at the 20% threshold ($R^2 = 0.90$, $P < 0.0001$) (Fig. 1A).

DISCUSSION

The data reiterate the earlier finding that the 40% threshold is inadequate for delineating all NSCLC (10,22,23). Although we determined a 24% ± 13% threshold for all tumors, corresponding to a more recent finding (24), this threshold also failed to adequately delineate all tumors. In fact, for tumors measuring less than 3 cm, the PET_{GTV} at the 20% threshold overestimated the mean CT_{GTV} by more than 8 times, whereas the mean volume for tumors measuring greater than 5 cm was underestimated by more than two thirds. These data illustrate the inability of the percentage threshold method to provide a single threshold that will adequately delineate volumes for all tumors.

Table 2 shows the use of the percentage threshold method by several investigators who used PET and CT for radiation treatment planning. In several trials, visual identification of tumors on PET and CT images by nuclear and radiation oncologists was used to delineate tumor volume. In other trials, a 40%–50% threshold was used to delineate NSCLC volume (9–15,17,19–21).

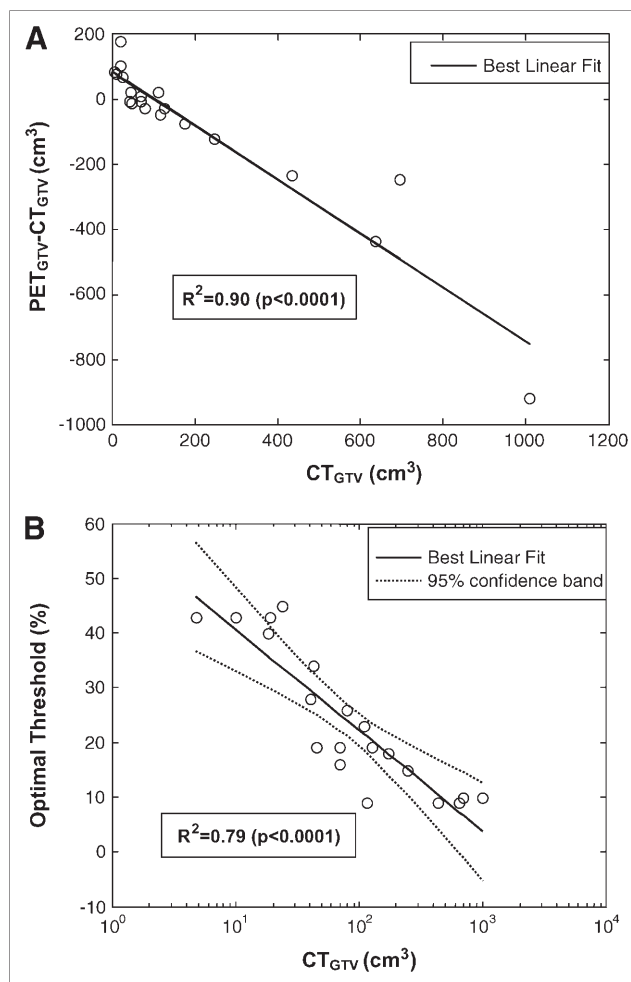


FIGURE 1. (A) CT_{GTV} vs. PET_{GTV} – CT_{GTV} at threshold of 20%. (B) CT_{GTV} vs. optimal threshold with best-fit logarithmic regression curve.

Erdi et al. initially proposed a 40%–50% threshold on the basis of measurements of stationary spheres containing ¹⁸F-FDG (22). In a subsequent phantom study, when motion was introduced, the use of a 40% threshold for maximum

TABLE 2
Methods of Tumor Delineation by PET and CT in Several Studies

Study	Method of tumor delineation by PET and CT
Erdi et al. (10)	40% threshold
Kiffer et al. (11)	Visual interpretation
Mah et al. (13)	50% threshold
Vanuytsel et al. (14)	Identification only
Nestle et al. (15)	50% threshold
Bradley et al. (9)	40% threshold
Deniaud-Alexandre et al. (19)	50% threshold
Giraud et al. (17)	40% threshold
Brianzoni et al. (21)	40% threshold
Ashamalla et al. (20)	Visual interpretation

uptake yielded a measured volume far smaller than the actual volume of the phantom sphere as it moved through simulated lung motion (25). Black et al. reported the results of a phantom experiment designed to evaluate the role of mean target SUVs in conditions of various target-to-background ^{18}F -FDG activities (26). They concluded that the PET_{GTV} can be defined by the following equation: $\text{threshold SUV} = 0.307 \times (\text{mean target SUV} + 0.588)$. However, the phantoms used in that experiment were stationary. The effect of tumor motion on the use of this equation is not known.

Although several prospective studies noted an increase in tumor volume when PET and CT images were used for treatment planning, the larger volumes were primarily dependent on upstaging based on nodal involvement. For patients without new nodal or distant metastases, several studies reported a decrease in treatment volume in the setting of atelectasis when a 40% SUV_{max} threshold was used (10,17,21). Nestle et al. compared various modalities for determining the PET_{GTV} , including visual GTV, 40% SUV_{max} , an absolute SUV of 2.5, and tumor-to-background ratio (18). They found substantial differences of up to 41% among these 4 different methods. Specifically, 3 of 8 patients had inadequate tumor coverage with the 40% threshold method. They concluded that the 40% threshold method was not suitable for target volume delineation.

For several reasons, a single-threshold model for NSCLC is less than ideal. First, it relies on the uniformity of SUVs within the tumor. A single threshold may fail to adequately model the lack of uniformity of ^{18}F -FDG uptake because of factors such as hypoxia and necrosis, which are more likely to occur in large tumors. This conclusion was established by the inverse correlation of the CT_{GTV} with the optimal threshold, showing that a much lower threshold is required to adequately encompass large areas of heterogeneity within large tumors.

In addition, lung motion and time spent in different portions of the breathing cycle also contribute to SUV fluctuations. A recent analysis of gated, 4-dimensional (4D) PET showed a significant influence of the breathing cycle on the measured SUV_{max} , with variations in SUV measurements of up to 24% (27,28).

The generalization of any method of tumor delineation by PET presents several difficulties. Inter- and intrainstitutional differences in the reconstruction of images and reconstruction filters, the dose of ^{18}F -FDG administered, lean body mass, blood glucose levels, and time from the injection of ^{18}F -FDG until the patient is scanned may contribute to alterations in percentage threshold isodensity curves. The method of reconstruction of PET images alters the SUV_{max} -to- SUV_{mean} ratio and will likely change percentage threshold contours (29). The choice of reconstruction filters also alters the SUV_{max} -to- SUV_{mean} ratio (30,31). Institutional differences are to be expected if these criteria are not standardized and adhered to diligently. Although the percentage threshold method is designed to standardize

against these differences, problems association with institutional variations cannot be ignored.

There are weaknesses in an effort to create a 1:1 volumetric match between PET- and CT-delineated tumors. Because of the motion of the tumor during PET, it is expected that the PET tumor volume will be larger than the CT tumor volume, as PET tracks tumors through many breathing cycles. Contouring of the larger PET volume may be a surrogate for incorporating tumor motion into the radiation target (Fig. 2). However, the use of PET as a surrogate for tumor motion has not been validated.

The extent of tumor motion may be better quantified by comparing PET with 4D CT and by using CT images as a guide for tumor contouring and PET. Future work with 4D multislice PET/CT may help to individualize the proper threshold setting for each patient, although other methods of tumor delineation by PET should be evaluated. We are currently reviewing our logarithmic model and an in-house automated segmentation algorithm to attempt to better delineate tumor volume (32).

CONCLUSION

The use of a single SUV_{max} threshold to delineate the GTV by PET results in poor delineation of the GTV, as manifested by a significant inverse correlation between the CT_{GTV} and the optimal threshold for the majority of peripheral primary NSCLCs. A 40% threshold may provide a close estimation of the CT_{GTV} for peripheral tumors smaller than 3 cm. The solution to setting the PET threshold is likely to be individualized on the basis of tumor size, location, nonuniform distribution of ^{18}F -FDG activity of the tumor, and status of breathing control.

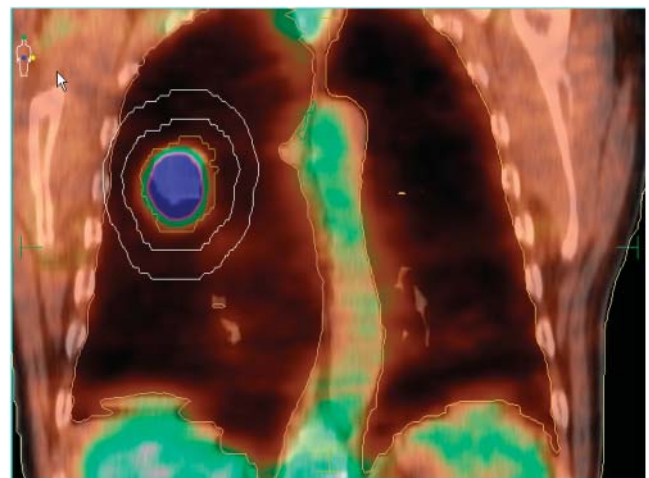


FIGURE 2. Fused PET and CT coronal images of patient with stage I NSCLC. CT image of tumor (white) can be seen within larger PET image of tumor. Contours represent gross tumor volume (inner contour), clinical target volume (middle contour), and planning target volume (outer contour).

REFERENCES

- Dwamena BA, Sonnad SS, Angobaldo JO, et al. Metastases from non-small cell lung cancer: mediastinal staging in the 1990s—meta-analytic comparison of PET and CT. *Radiology*. 1999;213:530–536.
- Gould MK, Kuschner WG, Rydzak CE, et al. Test performance of positron emission tomography and computed tomography for mediastinal staging in patients with non-small-cell lung cancer: a meta-analysis. *Ann Intern Med*. 2003;139:879–892.
- Pieterman RM, van Putten JW, Meuzelaar JJ, et al. Preoperative staging of non-small-cell lung cancer with positron-emission tomography. *N Engl J Med*. 2000;343:254–261.
- Antoch G, Stattaus J, Nemat AT, et al. Non-small cell lung cancer: dual-modality PET/CT in preoperative staging. *Radiology*. 2003;229:526–533.
- Lardinois D, Weder W, Hany TF, et al. Staging of non-small-cell lung cancer with integrated positron-emission tomography and computed tomography. *N Engl J Med*. 2003;348:2500–2507.
- MacManus MP, Hicks RJ, Matthews JP, et al. Positron emission tomography is superior to computed tomography scanning for response-assessment after radical radiotherapy or chemoradiotherapy in patients with non-small-cell lung cancer. *J Clin Oncol*. 2003;21:1285–1292.
- Hebert ME, Lowe VJ, Hoffman JM, et al. Positron emission tomography in the pretreatment evaluation and follow-up of non-small cell lung cancer patients treated with radiotherapy: preliminary findings. *Am J Clin Oncol*. 1996;19:416–421.
- Ichiya Y, Kuwabara Y, Sasaki M, et al. A clinical evaluation of FDG-PET to assess the response in radiation therapy for bronchogenic carcinoma. *Ann Nucl Med*. 1996;10:193–200.
- Bradley J, Thorstad WL, Mutic S, et al. Impact of FDG-PET on radiation therapy volume delineation in non-small cell lung cancer. *Int J Radiat Oncol Biol Phys*. 2004;59:78–86.
- Erdi YE, Rosenweig K, Erdi AK, et al. Radiotherapy treatment planning for patients with non-small cell lung cancer using positron emission tomography (PET). *Radiother Oncol*. 2002;62:51–60.
- Kiffer JD, Berlangieri SU, Scott AM, et al. The contribution of ¹⁸F-fluoro-2-deoxy-glucose positron emission tomographic imaging to radiotherapy planning in lung cancer. *Lung Cancer*. 1998;19:167–177.
- Kalff V, Hicks RJ, MacManus MP, et al. Clinical impact of ¹⁸F fluorodeoxy-glucose positron emission tomography in patients with non-small-cell lung cancer: a prospective study. *J Clin Oncol*. 2001;19:111–118.
- Mah K, Caldwell CB, Ung YC, et al. The impact of ¹⁸FDG-PET on target and critical organs in CT-based treatment planning of patients with poorly defined non-small-cell lung carcinoma: a prospective study. *Int J Radiat Oncol Biol Phys*. 2002;52:339–350.
- Vanuytsel LJ, Vansteenkiste JF, Stroobants SG, et al. The impact of ¹⁸F-fluoro-2-deoxy-D-glucose positron emission tomography (FDG-PET) lymph node staging on the radiation treatment volumes in patients with non-small cell lung cancer. *Radiother Oncol*. 2000;55:317–324.
- Nestle U, Walter K, Schmidt S, et al. ¹⁸F-Deoxyglucose positron emission tomography (FDG-PET) for the planning of radiotherapy in lung cancer: high impact in patients with atelectasis. *Int J Radiat Oncol Biol Phys*. 1999;44:593–597.
- Paulino AC, Thorstad WL, Fox T. Role of fusion in radiotherapy treatment planning. *Semin Nucl Med*. 2003;33:238–243.
- Giraud P, Grahek D, Montravers F, et al. CT and ¹⁸F-deoxyglucose (FDG) image fusion for optimization of conformal radiotherapy of lung cancers. *Int J Radiat Oncol Biol Phys*. 2001;49:1249–1257.
- Nestle U, Kremp S, Schaefer-Schuler A, et al. Comparison of different methods for delineation of ¹⁸F-FDG PET-positive tissue for target volume definition in radiotherapy of patients with non-small cell lung cancer. *J Nucl Med*. 2005;46:1342–1348.
- Deniaud-Alexandre E, Touboul E, Lerouge D, et al. Impact of computed tomography (CT) and ¹⁸F-deoxyglucose-coincidence detection emission tomography (FDG-CDET) image fusion for optimisation of conformal radiotherapy in non-small-cell lung cancers [in French]. *Cancer Radiother*. 2005;9:304–315.
- Ashamalla H, Rafla S, Parikh K, et al. The contribution of integrated PET/CT to the evolving definition of treatment volumes in radiation treatment planning in lung cancer. *Int J Radiat Oncol Biol Phys*. 2005;63:1016–1023.
- Brianzoni E, Rossi G, Ancidei S, et al. Radiotherapy planning: PET/CT scanner performances in the definition of gross tumour volume and clinical target volume. *Eur J Nucl Med Mol Imaging*. 2005;32:1392–1399.
- Erdi Y, Mawlawi O, Imbriaco M, et al. Volume determination for metastatic lung lesions by adaptive PET image thresholding. *Cancer*. 1997;80:2505–2509.
- Miller TR, Grigsby PW. Measurement of tumor volume by PET to evaluate prognosis in patients with advanced cervical cancer treated by radiation therapy. *Int J Radiat Oncol Biol Phys*. 2002;53:353–359.
- Fernando S, Kong FM, Kessler M, et al. Using FDG-PET to delineate gross tumor and internal target volumes. *J Radiat Oncol Biol Phys*. 2005;63(suppl):S400–S401.
- Caldwell CB, Mah K, Skinner M, Danjoux CE. Can PET provide the 3D extent of tumor motion for individualized internal target volumes? A phantom study of the limitations of CT and the promise of PET. *Int J Radiat Oncol Biol Phys*. 2003;55:1381–1393.
- Black QC, Grills IS, Kestin LL, et al. Defining a radiotherapy target with positron emission tomography. *J Radiat Oncol Biol Phys*. 2004;60:1272–1282.
- Erdi YE, Nehmeh SA, Pan T, et al. The CT motion quantitation of lung lesions and its impact on PET-measured SUVs. *J Nucl Med*. 2004;45:1287–1292.
- Nehmeh SA, Erdi YE, Pan T, et al. Quantitation of respiratory motion during 4D-PET/CT acquisition. *Med Phys*. 2004;31:1333–1338.
- Jaskowiak CJ, Bianco JA, Perlman SB, et al. Influence of reconstruction iterations on ¹⁸F-FDG PET/CT standardized uptake values. *J Nucl Med*. 2005;46:424–428.
- Chin BB, Lyengar S, Sabundaya BP, Schwartz D. Standardized uptake values in 2-deoxy-2-[¹⁸F] fluoro-D-glucose with positron emission tomography: clinical significance of iterative reconstruction and segmented attenuation compared with conventional filtered back projection and measured attenuation correction. *Mol Imaging Biol*. 2002;4:294–300.
- Krak NC, Boellaard R, Hoekstra OS, et al. Effects of ROI definition and reconstruction method on quantitative outcome and applicability in a response monitoring trial. *Eur J Nucl Med Mol Imaging*. 2005;32:294–301.
- El Naqa I, Low DA, Bradley JD, Viced M, Deasy JO. Deblurring of breathing motion artifacts in thoracic PET images by deconvolution methods. *Med Phys*. 2006;33:3587–3600.