

# Impairment of Cardiac Neuronal Function in Childhood Dilated Cardiomyopathy: An $^{123}\text{I}$ -MIBG Scintigraphic Study

Christophe Maunoury, Denis Agostini, Philippe Acar, Thierry Antonietti, Daniel Sidi, Gérard Bouvard, Jean Kachaner, and Lionel Barritault

*Services de Médecine Nucléaire and Cardiologie Pédiatrique, Hôpital Necker-Enfants Malades, Paris; and Service de Médecine Nucléaire, Centre Hospitalier Universitaire Côte de Nacre, Caen, France*

Abnormalities of norepinephrine uptake have been found to reflect impairment of cardiac adrenergic neuronal function in adults with heart failure. To our knowledge, no data on childhood dilated cardiomyopathy (DCM) are available. The aim of this study was to assess the cardiac neuronal function using  $^{123}\text{I}$ -metaiodobenzylguanidine (MIBG) scintigraphy in children with idiopathic DCM. **Methods:** We studied 26 patients (mean age,  $44 \pm 50$  mo) with DCM and left ventricular dysfunction and 12 control subjects (mean age,  $49 \pm 65$  mo) with normal left ventricular function. All subjects underwent planar cardiac imaging after intravenous injection of 20–75 MBq  $^{123}\text{I}$ -MIBG. A static anterior view was acquired 4 h after injection. The heart-to-mediastinum count ratio was measured as described previously. **Results:** On the basis of a reduction of the heart-to-mediastinum count ratio, cardiac neuronal uptake of  $^{123}\text{I}$ -MIBG was significantly decreased in patients with DCM compared with cardiac uptake in control subjects ( $172\% \pm 34\%$  versus  $277\% \pm 14\%$ ;  $P < 0.0001$ ). A significant correlation was found between left ventricular ejection fraction and  $^{123}\text{I}$ -MIBG cardiac uptake in patients with DCM ( $y = 2.5x + 113.3$ ;  $r = 0.80$ ;  $P < 0.0001$ ). **Conclusion:** Cardiac adrenergic neuronal function is impaired in children with idiopathic DCM.  $^{123}\text{I}$ -MIBG cardiac scintigraphy is a useful tool to assess cardiac neuronal function in childhood DCM.

**Key Words:** cardiac neuronal function; cardiomyopathy; pediatrics; metaiodobenzylguanidine; scintigraphy

**J Nucl Med 2000; 41:400–404**

**A**ssessment of cardiac adrenergic innervation is clinically useful in adults with heart failure (idiopathic dilated and ischemic cardiomyopathy) (1–5) or pheochromocytoma (6) using  $^{123}\text{I}$ -metaiodobenzylguanidine (MIBG) cardiac imaging. The natural history in childhood dilated cardiomyopathy (DCM) remains unclear. Prognosis varies from death to complete recovery. Potential risk factors such as age, arrhythmias, and hemodynamic and histologic parameters are controversial in childhood DCM (7–17).

Received Jan. 25, 1999; revision accepted Jul. 30, 1999.

For correspondence or reprints contact: Christophe Maunoury, MD, Service de Médecine Nucléaire, Hôpital Necker-Enfants Malades, 149 rue de Sèvres, 75743 Paris Cedex 15, France.

MIBG is an analog of guanethidine that is taken up by the adrenergic nerve endings and appears to share common uptake and storage mechanisms with those of norepinephrine (18). When labeled with  $^{123}\text{I}$ , MIBG allows assessment of myocardial adrenergic uptake in humans (19,20). The aim of this prospective study was to assess the cardiac neuronal function in children with idiopathic DCM using  $^{123}\text{I}$ -MIBG cardiac scintigraphy.

## MATERIALS AND METHODS

### Study Population

Between October 1996 and June 1998, 26 consecutive patients with idiopathic DCM were included. All patients had a hypokinetic left ventricle on 2-dimensional echocardiography (ejection fraction  $< 50\%$ ); none had a hypertrophic left ventricle. DCM was idiopathic without identifiable cause (toxic, metabolic, or ischemic).

The 26 patients (17 females, 9 males) were  $44 \pm 50$  mo old (age range, 2–175 mo). All patients underwent equilibrium radionuclide angiography and  $^{123}\text{I}$ -MIBG cardiac scintigraphy. No patient had diabetes mellitus or chronic renal failure disease. The patients were treated with diuretics and captopril. They received no inotropic drugs for 2 wk before the examination; no one received  $\beta$  blockers.

Ten patients referred for suspicion of neuroblastoma and 2 patients with Recklinghausen's disease but no pheochromocytoma served as control subjects and underwent  $^{123}\text{I}$ -MIBG scintigraphy. The 12 control subjects (4 females, 8 males) were  $49 \pm 65$  mo old (age range, 1–192 mo). They had no history of cardiac disease, no cardiac symptoms, normal electrocardiogram, and normal left ventricular function. Norepinephrine and epinephrine urinary excretion rates were within a normal range.

### Planar $^{123}\text{I}$ -MIBG Imaging

The pharmacologic precursor, metaiodobenzylguanidium sulfate, was obtained commercially (CIS Biointernational, Gif-sur-Yvette, France). The radiochemical purity of the radioisotope was guaranteed by the manufacturer to exceed 99.8% at the time of delivery. The specific activity was 37 MBq/mL. Thin-layer chromatography showed that the radiopharmaceutical purity of each dose exceeded 90%.

All sympathomimetic medicines that could potentially interfere with the MIBG uptake were discontinued for at least 5 half-lives before the scintigraphic examination. To block the thyroid uptake

of free  $^{123}\text{I}$ , patients were given Lugol's solution 2 d before and 2 d after administration of the radiopharmaceutical. A dose of 20–75 MBq  $^{123}\text{I}$ -MIBG was injected intravenously. Scanning was performed 4 h later on a  $\gamma$  camera equipped with a low-energy, all-purpose, parallel-hole collimator. Energy discrimination was provided by a 20% window centered on the 159-keV photopeak of  $^{123}\text{I}$ . The matrix size format was  $64 \times 64$ . The chest was imaged in anterior view for 10 min.

The  $^{123}\text{I}$ -MIBG cardiac uptake was semiquantified with a  $4 \times 4$  pixel region of interest (ROI). The ROI was drawn in the cardiac area and a same-sized ROI was drawn in the upper mediastinum area to standardize cardiac uptake as described (2,3). The ROIs were placed by two independent observers who were unaware of clinical status. To determine the control data,  $^{123}\text{I}$ -MIBG imaging was performed on control subjects using the same protocol.

### Equilibrium Radionuclide Angiography

Equilibrium radionuclide angiography was performed on the same  $\gamma$  camera following a standard protocol. The left ventricular ejection fraction (LVEF) cutoff was 50%.  $^{123}\text{I}$ -MIBG imaging was performed on the next day.

### Statistical Analysis

Data are expressed as mean  $\pm$  1 SD. Unpaired Student's *t* test was used to evaluate differences between data of patients with DCM and of control subjects. Linear regression analysis with calculation of Pearson's correlation coefficient was performed to determine whether the  $^{123}\text{I}$ -MIBG cardiac uptake was related to the LVEF.  $P < 0.05$  was considered significant.

## RESULTS

### MIBG and LVEF Imaging

$^{123}\text{I}$ -MIBG cardiac uptake was observed in all patients with DCM, with a heart-to-mediastinum count ratio (HMR) of  $172\% \pm 34\%$  4 h after injection (range, 121%–255%). The HMR in control subjects was  $277\% \pm 14\%$  (range, 256%–298%;  $P < 0.0001$ ), and the relationship between HMR and age was  $r = 0.09$  ( $P =$  not significant).

Figure 1A shows a scintigraphic image of  $^{123}\text{I}$ -MIBG cardiac uptake in a patient with DCM (HMR = 132%). Figure 1B shows a scintigraphic image of  $^{123}\text{I}$ -MIBG cardiac uptake in a control subject (HMR = 279%).

The radionuclide LVEF was assessed in 22 of 26 patients with DCM. The LVEF was  $23\% \pm 11\%$  (range, 10%–48%). The relationship between  $^{123}\text{I}$ -MIBG cardiac uptake and LVEF in patients with DCM was  $r = 0.80$  ( $y = 2.5x + 113.3$ ;  $P < 0.0001$ ) (Fig. 2).

### Reproducibility of MIBG Results

The intraobserver correlation for HMR calculation was  $r = 0.99$  ( $P < 0.0001$ ) and the interobserver correlation was  $r = 0.94$  ( $P < 0.0001$ ) for the 26 patients with DCM. For the 12 control subjects, the intraobserver correlation for HMR calculation was  $r = 0.98$  ( $P < 0.0001$ ) and the interobserver correlation was  $r = 0.94$  ( $P < 0.0001$ ).

## DISCUSSION

To our knowledge, assessment of cardiac neuronal function using  $^{123}\text{I}$ -MIBG scintigraphy in childhood DCM has

not been reported previously. This study showed an impairment of MIBG cardiac uptake in childhood DCM. This reduction was related to the left ventricular dysfunction.

### MIBG Metabolic Pathway

MIBG, a guanethidine analog, is thought to share the same uptake, storage, and release mechanisms as norepinephrine in the adrenergic nerve terminals but is not metabolized by monoamine oxidase or catechol-*O*-methyltransferase (18). Several studies have shown the affinity of MIBG for the adrenal medulla and the adrenergic nerves, and  $^{123}\text{I}$ -MIBG myocardial scintigraphy can be used to assess the cardiac adrenergic neuronal function in humans (19,20).

### MIBG Cardiac Uptake in Healthy Subjects

Estorch et al. (21) showed that  $^{123}\text{I}$ -MIBG myocardial uptake is related to age; a decrease in  $^{123}\text{I}$ -MIBG myocardial uptake was observed with aging, especially in patients older than 60 y. Patients younger than 20 y (mean age,  $17 \pm 1$  y) had a mean HMR of  $207\% \pm 26\%$ . For the 12 control subjects of this study, the mean HMR was  $277\% \pm 14\%$  for an average age of  $49 \pm 65$  mo. No relationship was found between HMR and age.

Morozumi et al. (22) reported a heterogeneous MIBG distribution in the left ventricle using  $^{123}\text{I}$ -MIBG SPECT and a mean HMR of  $302\% \pm 47\%$  4 h after injection.

### MIBG Cardiac Uptake in Adults with Heart Failure

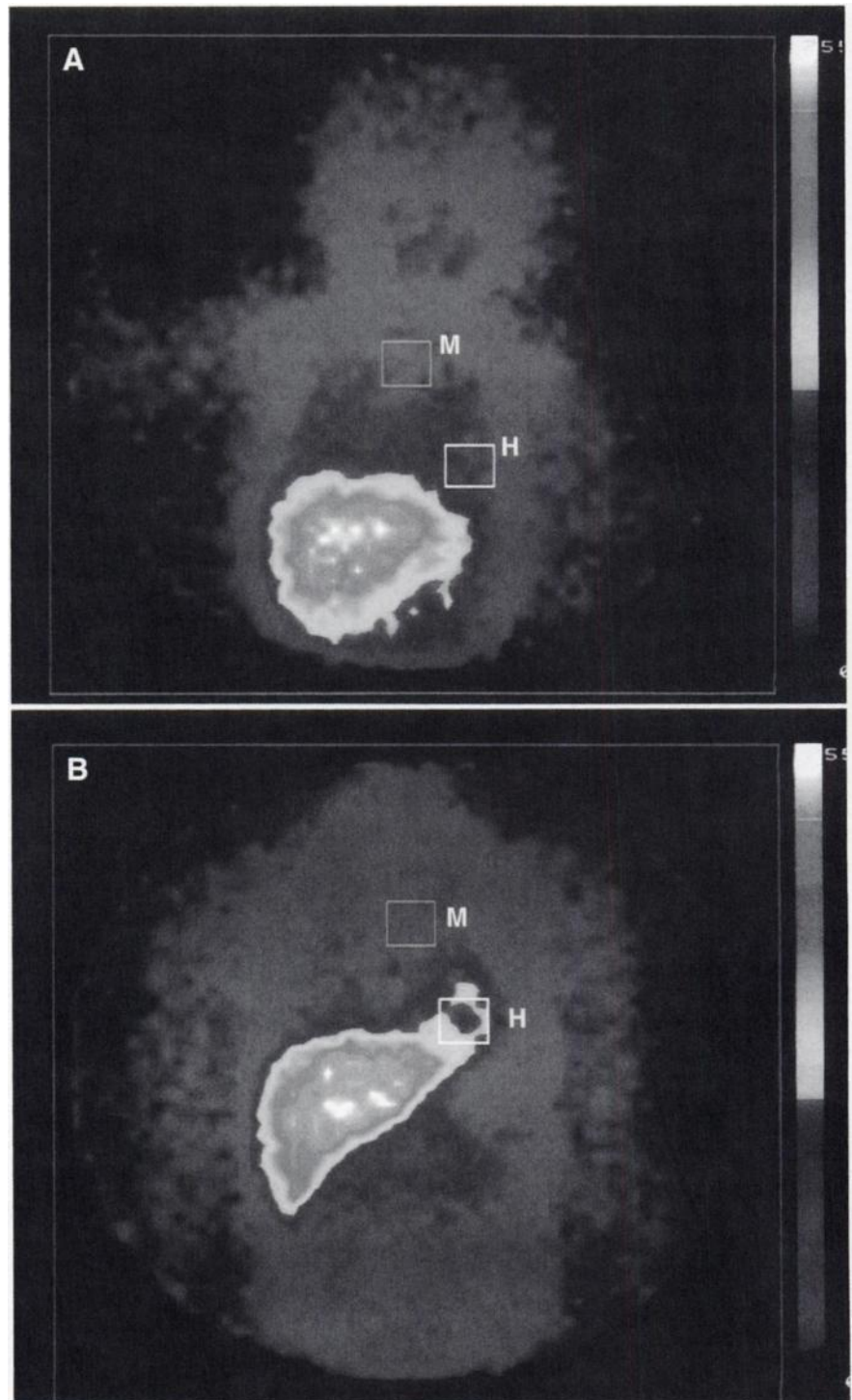
Decreased myocardial accumulation of MIBG has been described in conditions in which norepinephrine content or uptake was reduced (e.g., myocardial infarction (23,24); congestive heart failure (25,26); cardiac denervation (27,28); chronic renal failure (29); and diabetic autonomic neuropathy (30)). However, when the circulating norepinephrine level was increased (e.g., pheochromocytoma),  $^{123}\text{I}$ -MIBG cardiac uptake was also decreased (6).

In the chronic stage of DCM, decreased MIBG uptake may reflect neuronal injury or adrenergic dysfunction (1–3). Glowniak et al. (27) reported decreased uptake of MIBG and faster washout of MIBG in DCM. Decreased  $^{123}\text{I}$ -MIBG cardiac uptake in these patients suggested sympathetic nerve dysfunction, whereas rapid washout could reflect increased sympathetic nerve activity.

### MIBG Cardiac Uptake in Children with Heart Disease

To our knowledge, MIBG imaging in childhood DCM has not been reported. All ischemic, metabolic, or toxic cardiomyopathies, which could alter the MIBG metabolism, were excluded, so the idiopathic DCM population was very homogeneous. The  $^{123}\text{I}$ -MIBG cardiac uptake was decreased and left ventricular systolic function was impaired. The strength of the study was the comparison with control subjects, which showed a severe impairment of cardiac neuronal function in patients with DCM. These findings indicated the presence of an abnormal function of efferent cardiac sympathetic nerve endings.

Several mechanisms are involved in  $^{123}\text{I}$ -MIBG cardiac uptake abnormalities detected in children with heart disease.

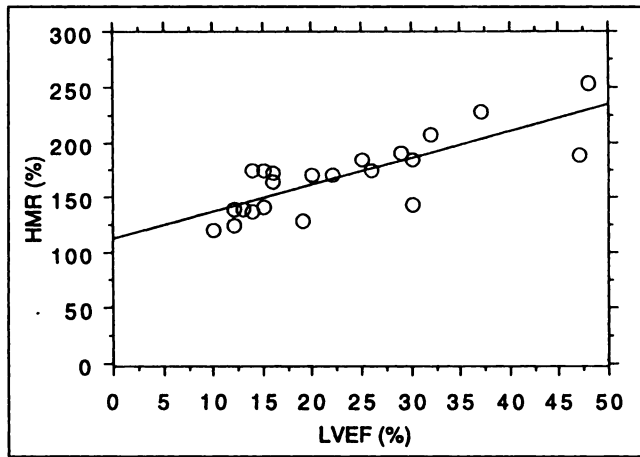


**FIGURE 1.** Anterior view of chest 4 h after  $^{123}\text{I}$ -MIBG injection in patient with idiopathic DCM (A) and in control subject (B). Heart (H) and mediastinum (M) were selected as shown to measure HMR. Significant decrease in  $^{123}\text{I}$ -MIBG cardiac uptake was observed in patient with idiopathic DCM (A) compared with  $^{123}\text{I}$ -MIBG cardiac uptake in control subject (B).

Reduction of MIBG uptake can be explained by functional mechanisms, such as increased cardiac spillover of norepinephrine (5), which results in competition with MIBG for uptake at nerve terminals. Therefore, a reduced number of sympathetic neurons with increased amounts of interstitial fibrotic tissue, together with increased MIBG turnover in dilated myocardium, could account for these phenomena. However, different mechanisms, such as denervation (31), reduced production of catecholamines, impaired storage in

vesicles, impaired reuptake, or excessive release associated with increased sympathetic stimulation, can also be involved in heart failure. Wu et al. (32) showed that changes in noradrenaline level and lymphocyte  $\beta$ -adrenoreceptor density occur concurrently with the presence and severity of heart failure in children.

MIBG myocardial uptake may be modified by a variety of drugs such as labetalol and propranolol (33). However, in this study, patients received no such drugs at the time of



**FIGURE 2.** Correlation between  $^{123}\text{I}$ -MIBG cardiac uptake expressed as HMR and LVEF in patients with idiopathic DCM ( $y = 2.5x + 113.3$ ;  $r = 0.80$ ;  $P < 0.0001$ ).

radionuclide imaging. They were treated with diuretics and captopril, but no data were available concerning the effects of captopril on  $^{123}\text{I}$ -MIBG cardiac uptake in childhood DCM. Enalapril reduced  $^{123}\text{I}$ -MIBG cardiac release (34) and increased  $^{123}\text{I}$ -MIBG myocardial uptake in adult patients with chronic heart failure (35). These studies were consistent with the fact that enalapril improved the clinical condition of the patients and, thus, the sympathetic adrenergic drive.

The HMR was highly reproducible despite difficulties of MIBG imaging in some patients associated with low  $^{123}\text{I}$ -MIBG cardiac uptake. The position of ROIs was quite important in obtaining the HMR. A series of different ROI sizes was defined and tested in the anterior view. Finally, the  $4 \times 4$  pixel ROI was found to be the best compromise to calculate the HMR.

Although a good correlation was found between  $^{123}\text{I}$ -MIBG cardiac uptake and LVEF, the study could not assess whether the decreased MIBG uptake preceded the left ventricular dysfunction in childhood DCM.

#### Limitations of Study

Quantitation of  $^{123}\text{I}$ -MIBG cardiac activity on scintigraphic images had technical limitations. Tomographic imaging provided an opportunity to study the myocardial distribution of  $^{123}\text{I}$ -MIBG uptake in adults (22). In children with DCM, the decrease in  $^{123}\text{I}$ -MIBG uptake induced difficulties for data processing, therefore hindering the use of tomographic imaging in routine examination. Consequently, planar imaging was used to quantify the MIBG cardiac uptake.

It was impossible to make any type of quantitative statement about sympathetic nerve activity on the basis of measurements at a single time point. Decreased activity at a single point could be associated with rapid washout of MIBG with normal initial uptake or decreased initial uptake with normal washout. The single measurement point was used in this study, as described in adult patients with heart failure (2,3).

Children in this study did not have sufficient follow-up to assess prognosis and to provide a cardiac cutoff value as described in adults with heart failure (3). Further studies of a larger population with long-term follow-up will help elucidate the role of MIBG imaging in childhood DCM.

#### CONCLUSION

$^{123}\text{I}$ -MIBG cardiac scintigraphy can detect an impairment of cardiac neuronal function and, consequently, reflects an actual change in cardiac adrenergic metabolism in children with idiopathic DCM. These preliminary results are encouraging and should lead to adoption of  $^{123}\text{I}$ -MIBG imaging as a key method for evaluating childhood DCM and perhaps an important factor in considering heart transplantation.

#### REFERENCES

- Schofer J, Spielmann R, Schubert A, Weber K, Schluter M. Iodine-123 meta-iodobenzylguanidine scintigraphy: a noninvasive method to demonstrate myocardial adrenergic nervous system disintegrity in patients with idiopathic dilated cardiomyopathy. *J Am Coll Cardiol.* 1988;12:1252-1258.
- Merlet P, Dubois-Randé JL, Adnot S, et al. Myocardial  $\beta$ -adrenergic desensitization and neuronal norepinephrine uptake function in idiopathic dilated cardiomyopathy. *J Cardiovasc Pharmacol.* 1992;19:10-16.
- Merlet P, Valette H, Dubois-Randé JL, et al. Prognostic value of cardiac metaiodobenzylguanidine imaging in patients with heart failure. *J Nucl Med.* 1992;33:471-477.
- Yamakado K, Takeda K, Kitano T, et al. Serial change of iodine-123 metaiodobenzylguanidine (MIBG) myocardial concentration in patients with dilated cardiomyopathy. *Eur J Nucl Med.* 1992;19:265-270.
- Imamura Y, Ando H, Mitsuoka W, et al. Iodine-123-metaiodobenzylguanidine images reflect intense myocardial adrenergic nervous activity in congestive heart failure independent of underlying cause. *J Am Coll Cardiol.* 1995;26:1594-1599.
- Agostini D, Scanu P, Babatasi G, et al. Pheochromocytoma with catecholamine-induced impairment of cardiac neuronal function. *Am Heart J.* 1995;130:1128-1130.
- Harris LC, Rodin AE, Nghiem QX. Idiopathic nonobstructive cardiomyopathy in children. *Am J Cardiol.* 1968;21:153-165.
- Greenwood RD, Nadas AS, Fyler DC. The clinical course of primary myocardial disease in infants and children. *Am Heart J.* 1976;92:549-560.
- Taliercio CP, Seward JB, Driscoll DJ, Fisher LD, Gersh BJ, Tajik AJ. Idiopathic dilated cardiomyopathy in the young: clinical profile and natural history. *J Am Coll Cardiol.* 1985;6:1126-1131.
- Griffin ML, Hernandez A, Martin TC, et al. Dilated cardiomyopathy in infants and children. *J Am Coll Cardiol.* 1988;11:139-144.
- Chen S, Nouri S, Balfour I, Jureidini S, Appleton RS. Clinical profile of congestive cardiomyopathy in children. *J Am Coll Cardiol.* 1990;15:189-193.
- Guntheroth WG. Congestive cardiomyopathy in children. *J Am Coll Cardiol.* 1990;15:194-195.
- Friedman RA, Moak JP, Garson A. Clinical course of idiopathic dilated cardiomyopathy in children. *J Am Coll Cardiol.* 1991;18:152-156.
- Gersony WM. The child with dilated cardiomyopathy: prognostic considerations and management decisions. *J Am Coll Cardiol.* 1991;18:157-158.
- Wiles HB, McArthur PD, Taylor AB, et al. Prognostic features of children with idiopathic dilated cardiomyopathy. *Am J Cardiol.* 1991;68:1372-1376.
- Akagi T, Benson LN, Lightfoot NE, Chin K, Wilson G, Freedom RM. Natural history of dilated cardiomyopathy in children. *Am Heart J.* 1991;121:1502-1506.
- Matitau A, Perez-Atayde A, Sanders SP, et al. Infantile dilated cardiomyopathy. *Circulation.* 1994;90:1310-1318.
- Wieland DM, Brown LE, Rogers WL, et al. Myocardial imaging with radioiodinated norepinephrine storage analog. *J Nucl Med.* 1981;22:22-31.
- Kline RC, Swanson DP, Wieland DM, et al. Myocardial imaging in man with I-123 meta-iodobenzylguanidine. *J Nucl Med.* 1981;22:129-132.
- Sisson JC, Shapiro B, Meyers L, et al. Metaiodobenzylguanidine to map scintigraphically the adrenergic nervous system in man. *J Nucl Med.* 1987;28:1625-1636.
- Estorch M, Carro I, Berna L, Lopez-Pousa J, Torres G. Myocardial iodine-labeled metaiodobenzylguanidine 123 uptake relates to age. *J Nucl Cardiol.* 1995;2:126-132.

22. Morozumi T, Kusuoka H, Fukuchi K, et al. Myocardial iodine-123-metaiodobenzylguanidine images and autonomic nerve activity in normal subjects. *J Nucl Med.* 1997;38:49-52.
23. Fagret D, Wolf JE, Comet M. Myocardial uptake of meta-[<sup>123</sup>I]-iodobenzylguanidine ([<sup>123</sup>I]-MIBG) in patients with myocardial infarct. *Eur J Nucl Med.* 1989;15:624-628.
24. Dae MW, Herre JM, O'Connell JW, Botvinick EH, Newman D, Munoz L. Scintigraphic assessment of sympathetic innervation after transmural versus nontransmural myocardial infarction. *J Am Coll Cardiol.* 1991;17:1416-1423.
25. Henderson EB, Kahn JK, Corbett JR, et al. Abnormal I-123 metaiodobenzylguanidine myocardial washout and distribution may reflect myocardial adrenergic derangement in patients with congestive cardiomyopathy. *Circulation.* 1988;78:1192-1199.
26. Agostini D, Lecluse E, Belin A, et al. Impact of exercise rehabilitation on cardiac neuronal function in heart failure: an iodine-123-metaiodobenzylguanidine scintigraphy study. *Eur J Nucl Med.* 1998;25:235-241.
27. Glowniak JV, Turner FE, Gray LL, Palac RT, Lagunas-Solar MC, Woodward WR. Iodine-123 metaiodobenzylguanidine imaging of the heart in idiopathic congestive cardiomyopathy and cardiac transplants. *J Nucl Med.* 1989;30:1182-1191.
28. Dae MW, De Marco T, Botvinick EH, et al. Scintigraphic assessment of MIBG uptake in globally denervated human and canine hearts: implications for clinical studies. *J Nucl Med.* 1992;33:1444-1450.
29. Miyanaga H, Yoneyama S, Kamitani T, Kawasaki S, Takahashi T, Kunishige H. Abnormal myocardial uptake and clearance of <sup>123</sup>I-labeled metaiodobenzylguanidine in patients with chronic renal failure and autonomic dysfunction. *J Nucl Cardiol.* 1996;3:508-515.
30. Mantysaari M, Kuikka J, Mustonen J, et al. Noninvasive detection of cardiac sympathetic nervous dysfunction in diabetes patients using [<sup>123</sup>I]metaiodobenzylguanidine. *Diabetes.* 1992;41:1069-1075.
31. Kondo C, Nakazawa M, Momma K, Kusakabe K. Sympathetic denervation and reinnervation after arterial switch operation for complete transposition. *Circulation.* 1998;97:2414-2419.
32. Wu JR, Chang HR, Chen SS, Huang TY. Circulating noradrenaline and beta-adrenergic receptors in children with congestive heart failure. *Acta Paediatr.* 1996;85:923-927.
33. Huguet F, Fagret D, Caillet M, Piriou A, Besnard JC, Guilloteau D. Interaction of metaiodobenzylguanidine with cardioactive drugs: an in vitro study. *Eur J Nucl Med.* 1996;23:546-549.
34. Takeishi Y, Atsumi H, Fujiwara S, Takahashi K, Tomoike H. ACE inhibition reduces cardiac iodine-123-MIBG release in heart failure. *J Nucl Med.* 1997;38:1085-1089.
35. Somsen GA, van Vlies B, de Milliano PAR, et al. Increased myocardial [<sup>123</sup>I]metaiodobenzylguanidine uptake after enalapril treatment in patients with chronic heart failure. *Heart.* 1996;76:218-222.