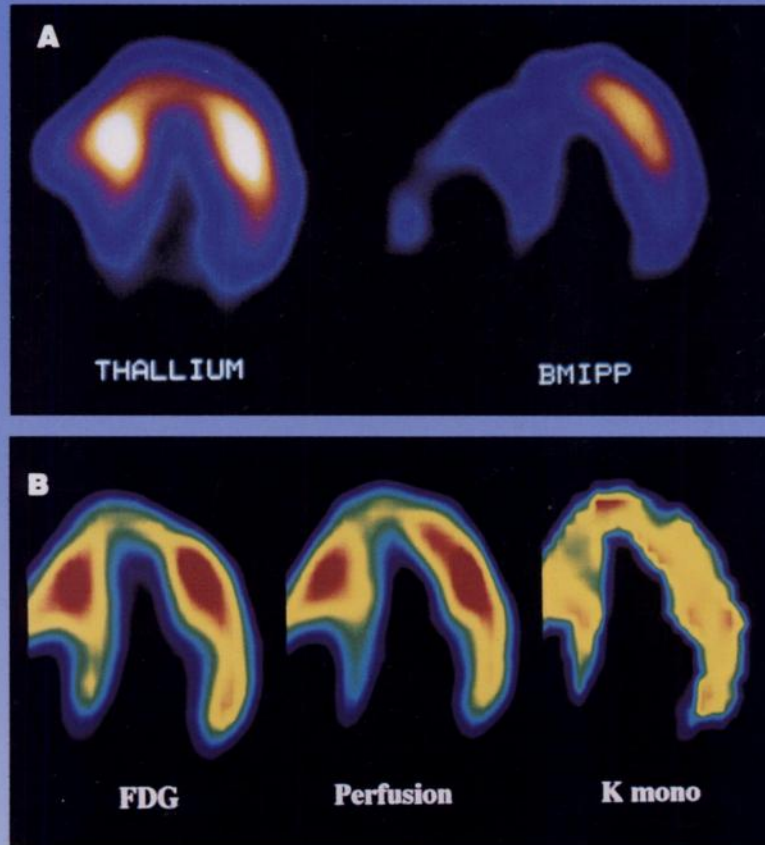

The Journal of Nuclear Medicine

JNM

Volume 39, Number 3 • March 1998



SPECT (A) and PET (B) horizontal long-axis images in a patient with asymmetrical septal hypertrophy revealing reduced BMIPP septal uptake while perfusion and FDG uptake were less affected. See pages 390-396.



The Official Publication of
the Society of Nuclear Medicine, Inc.
