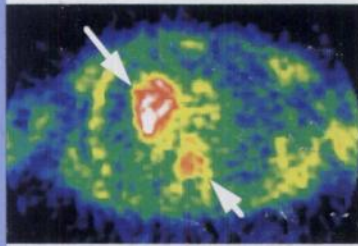
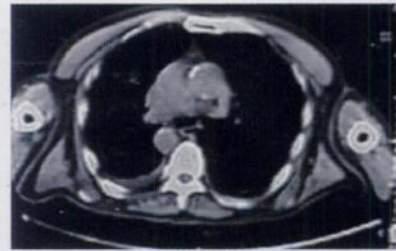


## PRE-THERAPY

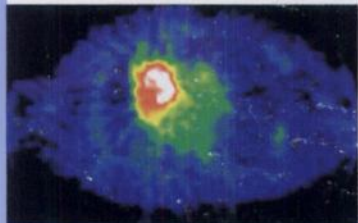
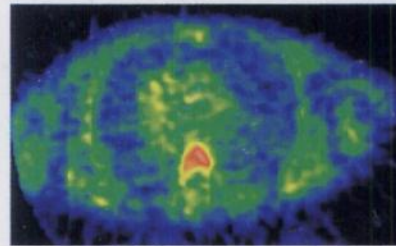
## POST-THERAPY



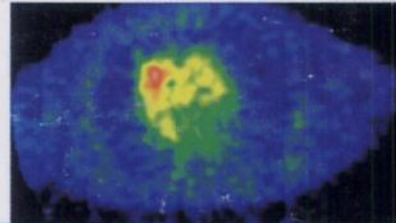
CT



TdR



FDG



Transverse thoracic images (CT,  $^{11}\text{C}$ -thymidine and  $^{18}\text{F}$ -fluorodeoxyglucose) from a patient with small cell lung cancer. There is marked decline in tumor uptake of  $^{11}\text{C}$ -thymidine 6 days after therapy. See pages 1757-1762.

