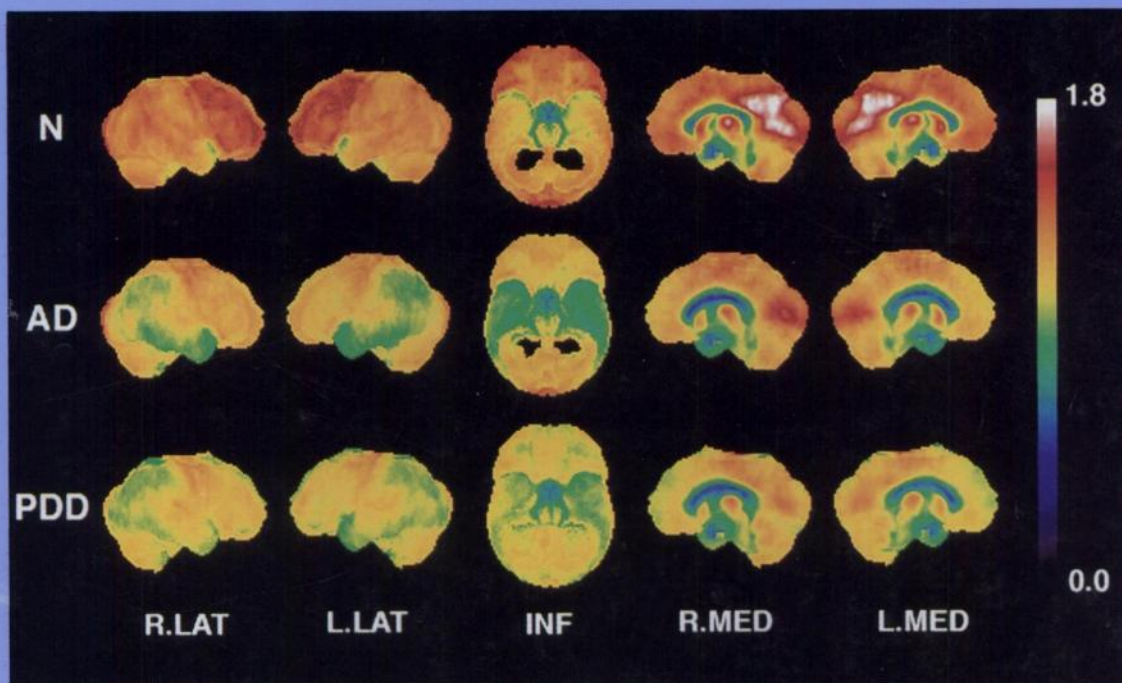


Judy Buchanan

The Journal of Nuclear Medicine

JNMM

Volume 38, Number 5 • May 1997



Three-dimensional stereotatic surface projections of normalized CMRglc in normal control subjects (N) and in patients with Alzheimer's disease (AD) and Parkinson's disease with dementia (PDD). See pages 797-802.



The Official Publication of
the Society of Nuclear Medicine, Inc.