

10. Cherry S, Dahlbohm M, Hoffman EJ. Three-dimensional PET using a conventional multi-slice tomograph without septa. *J Comput Assist Tomogr* 1991;15:6455-6468.
11. Townsend D, Byars L, Defrise M, Geissbuhler A, Nutt R. Rotating positron tomographs revisited. *Phy Med Biol* 1994;39:401-410.
12. Wienhard K, Eriksson L, Grootoank S, Casey M, Pietryzk U, Heiss W-D. Performance evaluation of the positron scanner ECAT EXACT. *J Comput Assist Tomogr* 1992;16: 804-813.
13. De Grado T, Turkington T, Williams J, Stearns C, Hoffman J, Coleman R. Performance characteristics of a whole-body PET scanner. *J Nucl Med* 1994;35:1398-1406.
14. Kinahan PE, Karp JS. Figures of merit for the performance of a volume imaging PET scanner. *Phys Med Biol* 1994;39:631-642.
15. Kinahan PE. Image reconstruction algorithms for volume-imaging PET scanners [PhD thesis]. University of Pennsylvania; Philadelphia: 1994.
16. Kinahan PE, Rogers JG. Analytic 3D image reconstruction using all detected events. *IEEE Trans Nucl Sci* 1989;36:964-968.
17. Lewitt RM, Muehllehner G, Karp JS. Three-dimensional image reconstruction for PET by multi-slice rebinning and axial image filtering. *Phys Med Biol* 1994;39:321-339.
18. Defrise M. A factorization method for the 3D x-ray transform. *Inverse Problems* 1995;11:983-994.
19. Freifelder R, Karp JS, Geagan M, Muehllehner G. Design and performance of the HEAD PENN-PET scanner. *IEEE Trans Nucl Sci* 1994;41:1436-1440.
20. Karp JS, Muehllehner G, Beerbohm D, Mankoff D. Event localization in a continuous scintillation detector using digital processing. *IEEE Tran Nucl Sci* 1986;33:550-555.
21. Mankoff DA, Muehllehner G, Miles GE. A local coincidence triggering system for PET tomographs composed of large-area position-sensitive detectors. *IEEE TNS* 1990;37:730-736.
22. Geagan MJ, Chase BB, Muehllehner G. Correction of distortions in a discontinuous image. *Nucl Instr Meth A* 1994;353:379-383.
23. Casey ME, Hoffman EJ. Quantitation in positron emission tomography: 7. A technique to reduce noise in accidental coincidence measurements and coincidence efficiency calibration. *J Comput Assist Tomogr* 1986;10:845-850.
24. Shao L, Karp JS. Cross plane scattering correction-point source deconvolution in PET. *IEEE Trans Med Imaging* 1991;10:234-239.
25. Grootoank S, Spinks TJ, Jones T, Michel C, Bol A. Correction for scatter using a dual energy window technique with a tomograph operating without septa. *IEEE Medical Imaging* 1991;10:1569-1573.
26. Shao L, Freifelder R, Karp JS. Triple energy window correction technique in PET. *IEEE Trans Med Imaging* 1994;13:641-648.
27. Stearns CW. Scatter correction method for 3D PET using 2D fitted Gaussian functions. *J Nucl Med* 1995;36:105P.
28. Yan MXH, Karp JS. A fully automated algorithm for estimating attenuation length in 3D from projection data. *Conference Record of the 1995 IEEE Medical Imaging* 1995;3:1407-1410.
29. Karp JS, Muehllehner G, Qu He, Yan XH. Singles transmission in volume-imaging PET with a ¹³⁷Cs source. *Phys Med Biol* 1995;40:929-944.
30. Shao L, Karp JS, Countryman P. Practical considerations of the Wiener filtering technique on projection data for PET. *IEEE Trans Nucl Sci* 1994;41:1560-1565.
31. Shao L, Lewitt RM, Karp JS. Combination of Wiener filtering and singular value decomposition filtering for volume imaging PET. *IEEE Trans Nucl Sci* 1995;42:1228-1234.
32. Karp JS, Daube-Witherspoon ME, Hoffman EJ, et al. Performance standards in positron emission tomography. *J Nucl Med* 1991;32:2342-2350.
33. Performance measurements of positron emission tomographs. *NEMA Standards Publication NU 2-1994*. Washington, DC: NEMA; 1994.
34. Muehllehner G, Buchin MP, Dudek JH. Performance characteristics of a positron imaging camera. *IEEE Trans Nucl Sci* 1976;23:528-537.
35. Thompson CJ, Picard Y. Two new strategies to increase the signal-to-noise ratio in positron volume imaging. *IEEE Trans Nucl Sci* 1993;40:956-961.
36. Smith RJ, Karp JS, Muehllehner G. The countrate performance of the volume imaging PENN-PET scanner. *IEEE Trans Med Imag* 1994;13:610-618.

FIRST IMPRESSIONS

Gallium and Hepatic Scintigraphy

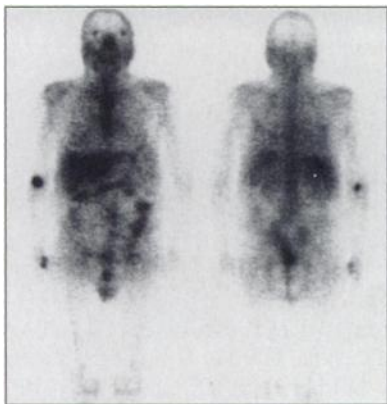


Figure 1.

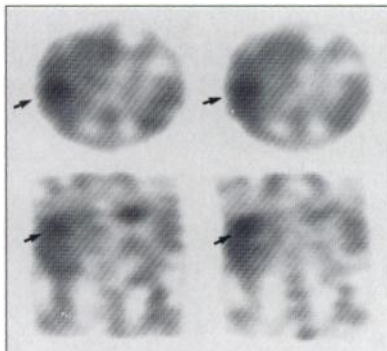


Figure 2.

PURPOSE

A 55-yr-old man with large-cell non-Hodgkin's lymphoma was suspected of recurrence after 3 yr of continuous clinical remission. CT showed a mass in the right lobe of the liver, but planar ⁶⁷Ga scintigraphy appeared normal (Fig. 1). However, SPECT imaging of the liver (Fig. 2) showed focal ⁶⁷Ga uptake in the right lobe (arrows) corresponding to the pathology on CT. Gallium-67 cannot be interpreted without SPECT imaging.

TRACER

Gallium-67-citrate, 8 mci

ROUTE OF ADMINISTRATION

Intravenous

TIME AFTER INJECTION

48 hours and one week

INSTRUMENTATION

Elscint Helix dual-head camera with HPC-5 medium-energy collimator

CONTRIBUTORS

Jabour Khoury and Rachel Bar-Shalom, Department of Nuclear Medicine, Rambam Medical Center, Haifa, Israel.