

18. Thakur ML, Lavender JP, Arnot RN, Silvester DJ, Segal AW. Indium-111-labeled autologous leukocytes in man. *J Nucl Med* 1977;18:1014-1021.
19. Rosenthal L, Kloiber R, Damtew B, Al-Majid H. Sequential use of radiophosphate and radiogallium imaging in the differential diagnosis of bone, joint and soft tissue infection: quantitative analysis. *Diagn Imaging* 1982;51:249-258.
20. Kolyvas E, Rosenthal L, Ahronheim GA, Lisbona R, Marks MI. Serial ^{67}Ga -citrate imaging during treatment of acute osteomyelitis in childhood. *Clin Nucl Med* 1978;3:461-466.
21. Raptopoulos V, Doherty PW, Goss TP, King MA, Johnson K, Gantz NM. Acute osteomyelitis: advantage of white cell scans in early detection. *Am J Roentgenol* 1982;139:1077-1082.
22. Woods GL, Gutierrez Y, Walker DH, Purtilo DT, Stanley JD. *Diagnostic pathology of infectious disease*. Philadelphia: Lea and Febiger; 1993:5-23.
23. In: Venge Per, ed. *The inflammatory process*. Stockholm: Almquist and Wiksell International; 1981:293-304.
24. Bomanji J, Solanki KK, Britton KE, Siraj Q, Small M. Imaging infection with Tc-99m radiolabelled "infection" [Abstract]. *Eur J Nucl Med* 1993;20:834.

Erratum

Due to a production error, Figure 2 in the article "Regional Methionine and Glucose Uptake in High-Grade Gliomas: A Comparative Study on PET-Guided Stereotactic Biopsy" by Goldman et al. (*JNM* 1997;38:1459-1462) was printed incorrectly. The figure is reprinted correctly below.

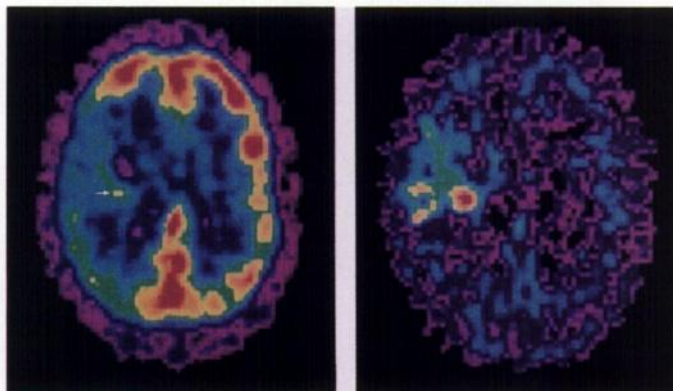


FIGURE 2. Fluorine-18-FDG (left) and ^{11}C -MET (right) PET images of an anaplastic astrocytoma in the temporal lobe. The uptake of ^{18}F -FDG is globally reduced in the tumor area, but a spot of high ^{18}F -FDG uptake is found where stereotactic histologic samples demonstrate anaplasia (arrow). The uptake of ^{11}C -MET is the most pronounced at the level of this anaplastic area, but increased uptake of this tracer is also found in nonanaplastic zones of the tumor.