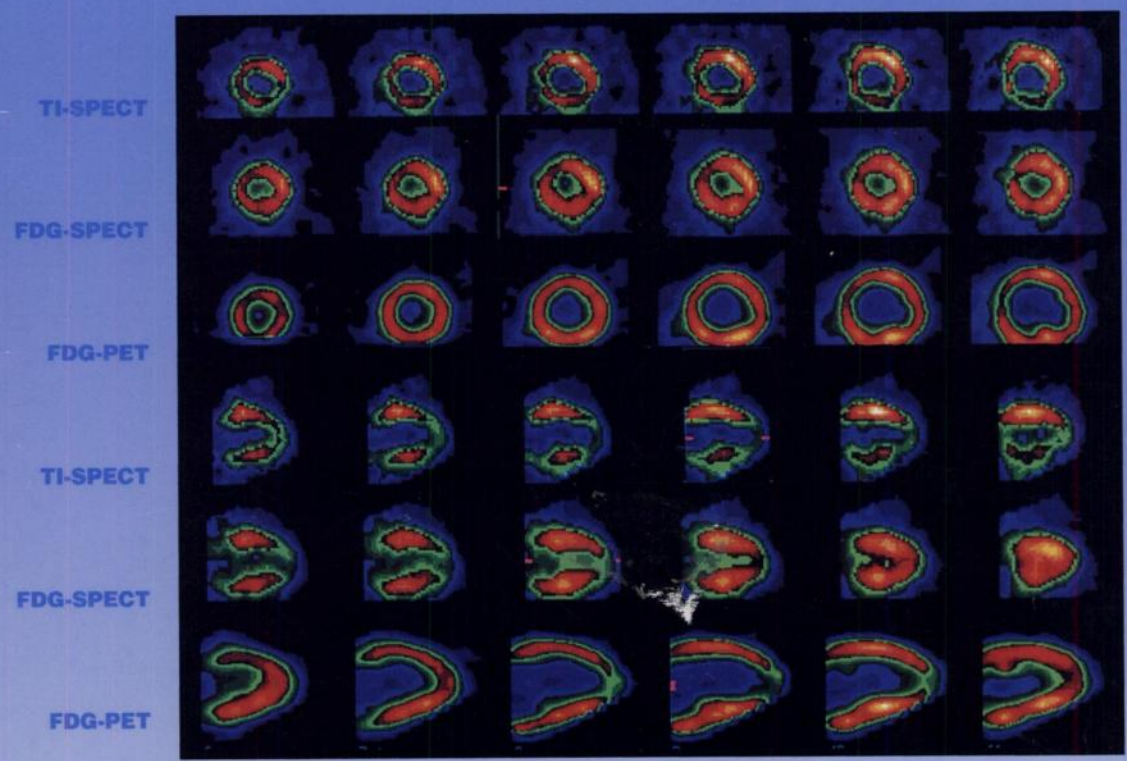


J. BUCHANAN

The Journal of Nuclear Medicine

JNMM

Volume 36, Number 2 • February 1995



Short and vertical long axes of rest thallium (TI), FDG-SPECT and FDG-PET images in a patient with a fixed apical thallium defect and inferior wall abnormalities. FDG-SPECT and FDG-PET images show some increased uptake in these areas but with essentially little uptake in the apex. See pages 176-187.



The Official Publication of
the Society of Nuclear Medicine, Inc.

The Journal of Nuclear Medicine

JNMM

Volume 36, Number 2 • February 1995

**ADDRESS CHANGE
EFFECTIVE IMMEDIATELY**

*Submission of manuscripts
and editorial correspondence
should be sent to:*

**Stanley J. Goldsmith, MD
Editor-in-Chief**

**The Journal of Nuclear Medicine
402 East 64th Street, Suite 1A
New York, New York 10021
Telephone: (212)906-9060
Fax: (212)906-9056**



The Official Publication of
the Society of Nuclear Medicine, Inc.
