

JNM



Official Publication of
the Society of Nuclear Medicine

SNM NEWSLINE

- 15N Scintimammography: Magic Bullet or False Promise?**
Deborah Kotz
- 20N Institute of Medicine Urges Construction of New Accelerator**
J. Rojas-Burke
- 26N Nuclear Renal Scan Offers Hope to Transplant Patient**
Stacey Silver
- 30N Commentary: The Nuclear Medicine Industry: Strategies for Survival**
Peter C. Vermeeren
- 32N News Briefs: Nuclear Medicine Company Merger; NMTCB Improves Testing Strategy; Coronary Heart Disease Training Program Launched**

HUMAN STUDIES

- 167 Reproducibility of SPECT Measurement of Benzodiazepine Receptors in Human Brain with Iodine-123-Iomazenil**
Anissa Abi-Dargham, Mitchell Gandelman, Sami S. Zoghbi, Marc Laruelle, Ronald M. Baldwin, Penny Randall, Yolanda Zea-Ponce, Dennis S. Charney, Paul B. Hoffer and Robert B. Innis
- 176 Direct Comparison of Fluorine-18-FDG SPECT, Fluorine-18-FDG PET and Rest Thallium-201 SPECT for Detection of Myocardial Viability**
Robert W. Burt, Orrin W. Perkins, Bernard E. Oppenheim, Donald S. Schauwecker, Leon Stein, Henry N. Wellman and Robert M. Witt
- 180 Relationship Between Reverse Redistribution on Planar Thallium Scintigraphy and Regional Myocardial Viability: A Correlative PET Study**
Robert Soufer, Holley M. Dey, Andrew J. Lawson, Frans J. Th. Wackers and Barry L. Zaret
- 188 Artfactual Inhomogeneities in Myocardial PET and SPECT Scans in Normal Subjects**
Marissa L. Bartlett, Stephen L. Bacharach, Liisa-Maria Voipio-Pulkki and Vasken Dilsizian
- 196 Impaired Left Ventricular Diastolic Filling in Patients with Acromegaly: Assessment with Radionuclide Angiography**
Alberto Cuocolo, Emanuele Nicolai, Serafino Fazio, Leonardo Pace, Simone Maurea, Antonello Cittadini, Luigi Saccà and Marco Salvatore
- 202 Primary Lung Cancer SPECT Imaging with Pentavalent Technetium-99m-DMSA**
Tsuneo Hirano, Hidenori Otake, Ichiro Yoshida and Keigo Endo

- 207 Editorial: Tissue Characterization in Nuclear Oncology: Its Time Has Come**
Lamk M. Lamki
- 211 Detection of Lymph Node Metastases of Squamous-Cell Cancer of the Head and Neck with FDG-PET and MRI**
Jan W. Braams, Jan Pruim, Nicole J.M. Freling, Peter G.J. Nikkels, Jan L.N. Roodenburg, Geert Boering, Willem Vaalburg and Albert Vermey
- 217 Radiiodine Therapy of the Autonomous Thyroid Nodule in Patients with or without Visible Extranodular Activity**
Jérôme Clerc, Françoise Dagousset, Mireille Izembart, Jean-Philippe Jais, Hassan M. Heshmati, Alexandre Alcaïs, Alain Chevalier, Aubène F. Léger and Lionel Barritault
- 224 Clinical Comparison of Technetium-99m-EC, Technetium-99m-MAG3 and Iodine-131-OIH in Renal Disorders**
Levent Kabasakal, H. Turgut Turoğlu, Çetin Önsel, Kutlan Özker, İlhami Uslu, Saadet Atay, Tülay Cansiz, Kerim Sönmezoglu, Enis Altiok, Ali Tan Isitman, Tarik Kapicioğlu and İrfan Urgancıoğlu
- 229 Value of Fluorine-18-Fluorodeoxyglucose and Thallium-201 in the Detection of Pancreatic Cancer**
Tetsuro Inokuma, Nagara Tamaki, Tatsuo Torizuka, Tohru Fujita, Yasuhiro Magata, Yoshiharu Yonekura, Gakuju Ohshio, Masayuki Imamura and Junji Konishi

CASE REPORTS

- 236 Primary Breast Lymphoma Detected with SPECT Using Gallium-67-Citrate**
J.M. Jing, E.E. Kim, L. Mouloupoulos and D.A. Podoloff
- 238 Brain SPECT Imaging for Laminar Heterotopia**
Hiroshi Matsuda, Teiichi Onuma and Akira Yagishita
- 241 Rapid Washout of Technetium-99m-MIBI from a Large Parathyroid Adenoma**
François Bénard, Bernard Lefebvre, Frédéric Beuvon, Marie-France Langlois and Guy Bisson
- 244 Fourier Phase Analysis of First-Pass Data: Noninvasive Detection of Pulmonary Sequestration**
Mary L. Hilfiker, Robert J. Telepak, Patrick F. Jewell and Michael F. Harshorne
- 247 Bone Scan in Tumor-Induced Osteomalacia**
Hee K. Lee, Wei Wen Sung, Paul Solodnik and Mona Shimshi
- 250 Unexpected Bone Marrow Uptake of Thallium-201 in Nonsecretory Myeloma**
Haluk Burcak Sayman, Kerim Sönmezoglu, Enis Altiok, Gevher Devranoglu and Burhan Ferhanoglu

LABORATORY STUDIES

- 252 In Vitro Comparison of Cell Proliferation Kinetics and Uptake of Tritiated Fluorodeoxyglucose and L-Methionine in Squamous-Cell Carcinoma of the Head and Neck**
Heikki Minn, Anaira C. Clavo, Reidar Grénman and Richard L. Wahl

- 259 Radioprotection Against Biological Effects of Internal Radionuclides In Vivo by S-(2-Aminoethyl)isothiouonium Bromide Hydrobromide (AET)**
Venkat R. Narra, Ravi S. Harapanhalli, S. Murty Goddu, Roger W. Howell and Dandamudi V. Rao
- 267 The Transition from Technegas to Per technegas**
Ernest M. Scalzetti and George M. Gagne
- 270 Effect of N-0861, a Selective Adenosine A1 Receptor Antagonist, on Pharmacologic Stress Imaging with Adenosine**
David K. Glover, Mirta Ruiz, Vedat Sansoy, Richard J. Barrett and George A. Beller
- 276 Editorial: New Directions in Pharmacologic Stress Imaging**
Abdulmassih S. Iskandrian
- 278 Evaluation of SPECT Quantification of Radiopharmaceutical Distribution in Canine Myocardium**
Jianying Li, Ronald J. Jaszczak, Kim L. Greer, David R. Gilland, David M. DeLong and R. Edward Coleman
- 287 Variability and Reproducibility of Rubidium-82 Kinetic Parameters in the Myocardium of an Anesthetized Canine**
Pamela G. Coxson, Kathleen M. Brennan, Ronald H. Huesman, Sophie Lim and Thomas F. Budinger

METHODOLOGY

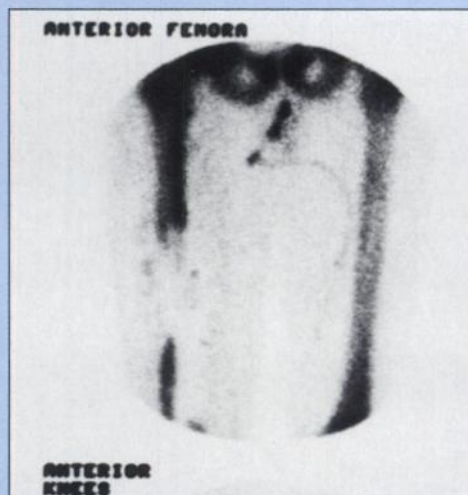
- 297 A Modeling Method to Improve Quantitation of Fluorodeoxyglucose Uptake in Heterogeneous Tumor Tissue**
Hsiao-Ming Wu, Sung-Cheng Huang, Yong Choi, Carl K. Hoh and Randall A. Hawkins
- 307 Improved Signal-to-Noise in PET Activation Studies Using Switched Paradigms**
Simon R. Cherry, Roger P. Woods, Niraj K. Doshi, Pranab K. Banerjee and John C. Mazziotta
- 315 Modeling Analysis of Platinum-195m for Targeting Individual Blood-Borne Cells in Adjuvant Radioimmunotherapy**
John D. Willins and George Sgouros

COMPUTER SIMULATION

- 320 Heterogeneity of Myocardial Perfusion Provides the Physiological Basis of Perfusable Tissue Index**
Pilar Herrero, Anton Staudenherz, John F. Walsh, Robert J. Gropler and Steven R. Bergmann
- 328 Transmission Computed Tomography Imaging of the Head with a SPECT System and a Collimated Line Source**
Brad J. Kemp, Frank S. Prato, Richard L. Nicholson and Lionel Reese
- 336 A Monte Carlo Simulation Model for Radiation Dose to Metastatic Skeletal Tumor from Rhenium-186(Sn)-HEDP**
R. Chandrasiri Samaratinga, Stephen R. Thomas, Jerry D. Hinnefeld, Larry C. Von Kuster, David M. Hyams, Jonathan S. Moulton, Matthew I. Sperling and Harry R. Mazon III

FIRST IMPRESSIONS

Radionuclide venography in a patient with bilateral nonpitting edema of the lower extremities. How is the procedure performed? For acquisition information turn to page 249.



CLINICOPATHOLOGIC CONFERENCES

- 351 Radionuclide Studies of the Upper Gastrointestinal Tract in Children with Feeding Disorders**
Sydney Heyman, Peggy S. Eicher and Abass Alavi

DEPARTMENTS

- 355 Residency Programs in Nuclear Medicine**
- 37A Information for Authors**
- 39A New Products**
- 40A Calendar**
- 43A Classified Advertising**
- 48A JNM Direct Response**