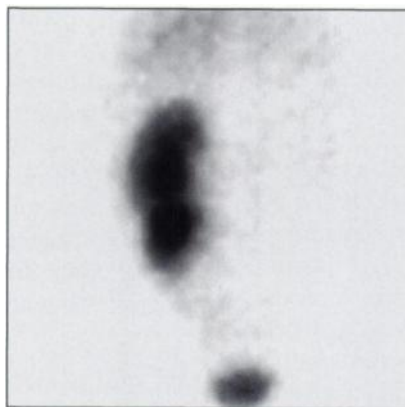


- binding sites expressed on human blood basophils. Evidence for a prostaglandin E₁, I₂ and D₂ receptor. *J Biol Chem* 1992;267:12700–12708.
21. Loevinger R, Budinger T, Watson E. *MIRD primer for absorbed dose calculations*. New York: Society of Nuclear Medicine; 1988.
 22. Cristy M, Eckerman KF. Specific absorbed fractions of energy at various ages from internal photon sources. Oak Ridge National Laboratory, ORNL/TM-8381, Oak Ridge, TN, 1987.
 23. Jarvis NS, Birchall A, James AC, Bailey MR, Dorrian MD. LUPED 1.0, personal computer program for calculating internal doses using the ICRP respiratory tract model. National Radiological Protection Board, Oxon, U.K., 1993.
 24. ICRP 1990 Recommendations of the International Commission on Radiological Protection. *ICRP publication 60*. Pergamon Press; Oxford: 1991.
 25. Hassan M, Refai E, Andersson M, Schnell PO, Jacobson H. In vivo dynamic distribution of ¹³¹I-VIP in the rat studied by gamma camera. *Nucl Med Biol* 1994;21:865–872.
 26. Johansson L, Mattson S, Nosslin B, Svegborn SR. Effective dose from radiopharmaceuticals. *Eur J Nucl Med* 1993;19:933–938.

FIRST IMPRESSIONS

Duplicated collecting system in an elongated left kidney?

For acquisition information, turn to page 1817.



rodeoxygen metabolism in patients with recurrent colorectal tumors receiving radiotherapy. *J Nucl Med* 1991;32:1485-1490.

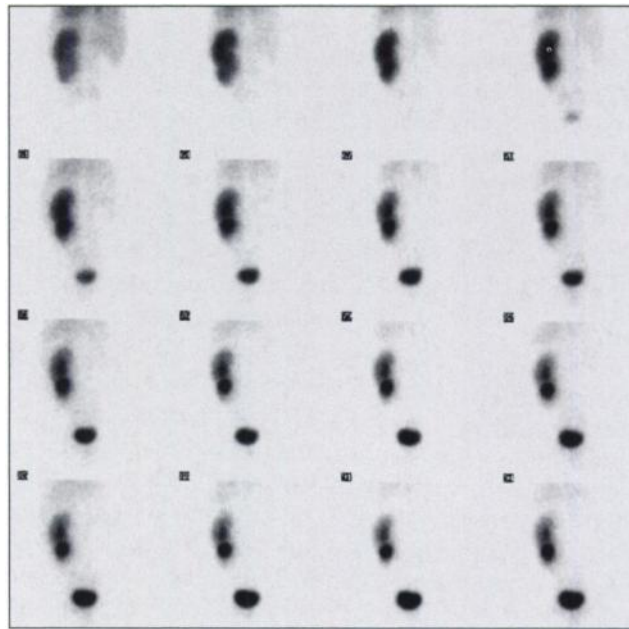
37. Zasadny KR, Wahl RL. Standardized uptake values of normal tissues at PET with 2-[fluorine-18]-fluoro-2-deoxy-D-glucose: variations with body weight and a method for correction. *Radiology* 1993;189:847-850.

38. Hamberg LM, Hunter GJ, Alpert NM, et al. The dose uptake ratio as an index of glucose metabolism: useful parameter or oversimplification? *J Nucl Med* 1994;35:1308-1312.

39. Breedis C, Young G. The blood supply of neoplasms in the liver. *Am J Pathol* 1954;30:969-985.

(continued from page 1739)

FIRST IMPRESSIONS: EVALUATION OF RENAL OBSTRUCTION



PURPOSE

A 5-yr-old boy was referred for evaluation of renal obstruction. Sequential posterior images (Fig. 1) depict an absence of tracer uptake in the right renal bed. The left kidney which appears to be elongated with irregular cortical outline actually represents two fused kidneys lying in the normal position of the left kidney (a crossed-fused ectopia). The upper kidney shows good uptake and excretion. The lower kidney shows slightly diminished initial uptake, possibly due to its more anterior position. Prolonged tracer retention is noted in the lower kidney collecting system but with no obstruction, as evidenced by prompt response to lasix (not shown).

TRACER

Technetium-99m-DTPA, 5.9 mCi

ROUTE OF ADMINISTRATION

Intravenous

TIME AFTER INJECTION

Two minutes per frame for 32 minutes

INSTRUMENTATION

Vision 1024 RZ, Summit Nuclear

CONTRIBUTORS

Mordechai Lorberboym and Chun K. Kim, The Mount Sinai Medical Center, New York, NY