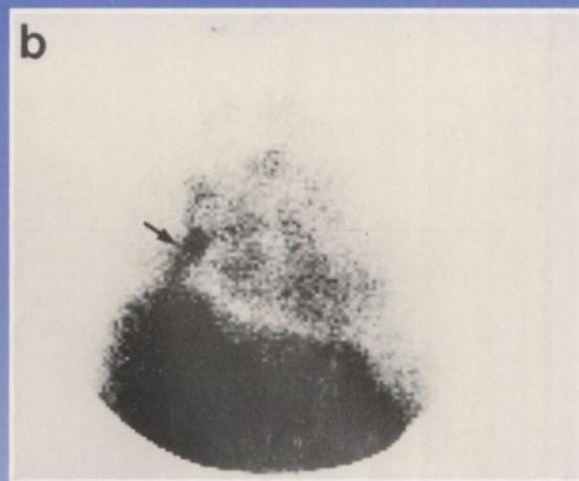
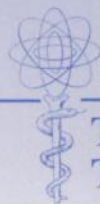

The Journal of Nuclear Medicine

JNMM

Volume 35, Number 2 • February 1994



(a) Subtraction pulmonary angiogram demonstrates a defect (arrow) in the right pulmonary artery which is consistent with embolus. (b) Scintigram of the anterior chest 6 hr after injection of ^{99m}Tc -3B6 shows an area of increased uptake corresponding to the angiogram abnormality. See pages 195-202.



The Official Publication of
The Society of Nuclear Medicine, Inc.
