

Behavioral technology combined with ongoing endeavors to achieve higher resolution with finer anatomical and functional localization are needed to fully exploit the bright neuroscientific future of PET.

Shankar Vallabhajosula
 Monte Buchsbaum
 Mount Sinai Medical Center
 New York, New York

REFERENCES

1. Vingerhoets FJG, Snow BJ, Schulzer M, et al. Reproducibility of ¹⁸F-6-fluorodopa positron

emission tomography in normal human subjects. *J Nucl Med* 1994;35:18-24.

2. Sawle GV, Wroe SJ, Lees AJ, Brooks DJ, Frackowiak RSJ. The identification of presymptomatic parkinsonism: clinical and ¹⁸F-dopa positron emission tomography studies in an Irish kindred. *Ann Neurol* 1992;32:609-617.

3. Burn DJ, Mark MH, Playford ED, et al. Parkinson's disease in twins studied with ¹⁸F-dopa and positron emission tomography. *Neurology* 1992;42:1894-1900.

4. Kippenhan JS, Barker WW, Nagel J, Grady C, Duara R. Neural-network classification of normal and Alzheimer's disease subjects using high and low resolution PET cameras. *J Nucl Med* 1994;35:7-15.

5. Herholz K, Perani D, Salmon E, et al. Comparability of FDG PET studies in probable

Alzheimer's disease. *J Nucl Med* 1993;34:1460-1466.

6. Fazekas F, Alavi A, Chawluk JB, et al. Comparison of CT, MR, and PET in Alzheimer's dementia and normal imaging. *J Nucl Med* 1989;30:1607-1615.

7. Fukuyama H, Ogawa M, Yamauchi H, et al. Altered cerebral energy metabolism in Alzheimer's disease: a PET study. *J Nucl Med* 1994; 35:1-6.

8. Hof RP, Bierer ML, Perl PD, et al. Evidence for early vulnerability of the medial and inferior aspects of the temporal lobe in an 82-yr-old patient with preclinical signs of dementia. Regional and laminar distribution of neurofibrillary tangles and senile plaques. *Arch Neurol* 1992; 49:946-953.

ERRATUM

Due to a production error, Figure 1 in the article "Comparison of Anatomically-Defined Versus Physiologically-Based Regional Localization Effects on PET-FDG Quantitation" by Resnick et al. (*J Nucl Med* 1993;34:2201-2207) was printed incorrectly. The corrected figure and legend is shown below.

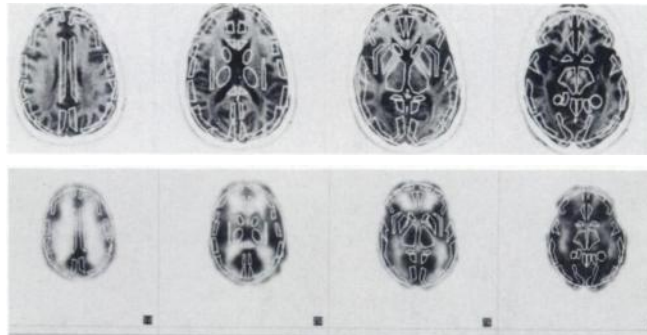


FIGURE 1. Adjusted template regions overlaid upon MRI (top) and corresponding PET (bottom) slices.