

JNM



Official Publication of
The Society of Nuclear Medicine

SNM NEWSLINE

- 9N EPA Divided Over Radon Risk in Drinking Water**
Lantz Miller
- 12N NBTf Hopefuls Scramble for DOE Grant**
Lantz Miller
- 14N Highlights of the Fifth Annual International PET Conference**
- 21N Lines from the President**
- 22N Commentary: Government Relations Update**
Sandy Bilko
- 26N Newsbriefs: Uterine Response to Sincalide; New Publication**

HUMAN STUDIES

- 1 Altered Cerebral Energy Metabolism in Alzheimer's Disease: A PET Study**
Hidenao Fukuyama, Masafumi Ogawa, Hiroshi Yamauchi, Shinya Yamaguchi, Jun Kimura, Yoshiaru Yonekura and Junji Konishi
- 7 Neural-Network Classification of Normal and Alzheimer's Disease Subjects Using High-Resolution and Low-Resolution PET Cameras**
J. Shane Kippenhan, Warren W. Barker, Joachim Nagel, Cheryl Grady and Ranjan Duara
- 16 Editorial: Detection and Comparison of Patterns in Images**
Jonathan M. Links and Michael D. Devous, Sr.
- 18 Reproducibility of Fluorine-18-6-Fluorodopa Positron Emission Tomography in Normal Human Subjects**
François J.G. Vingerhoets, Barry J. Snow, Michael Schulzer, Scott Morrison, Thomas J. Ruth, James E. Holden, Sandra Cooper and Donald B. Calne
- 24 Editorial: PET Studies in Psychiatry: Validity, Accuracy and the Future**
Shankar Vallabhajosula and Monte Buchsbaum
- 27 SPECT Images of Technetium-99m-Ethyl Cysteinate Dimer in Cerebrovascular Diseases: Comparison with Other Cerebral Perfusion Tracers and PET**
Tatsuro Tsuchida, Sadahiko Nishizawa, Yoshiharu Yonekura, Norihiro Sadato, Yasushi Iwasaki, Toru Fujita, Naoki Matoba, Yasuhiro Magata, Nagara Tamaki and Junji Konishi
- 32 Carbon Dioxide Reactivity by Consecutive Technetium-99m-HMPAO SPECT in Patients with Chronically Obstructed Major Cerebral Artery**
Naohiko Oku, Masayasu Matsumoto, Kazuo Hashikawa, Hiroshi Moriwaki, Yutaka Okazaki, Yujiro Seike, Nobuo Handa, Toshiisa Uehara, Takenobu Kamada and Tsunehiko Nishimura

- 41 Editorial: Cerebral Versus Myocardial Stress Perfusion Imaging: Role of Pharmacological Intervention in the Diagnostic Assessment of Flow Reserve**
Josef Machac and Shankar Vallabhajosula
- 44 Cerebral Blood Flow Study in Patients with Moyamoya Disease Evaluated by IMP SPECT**
Hiroaki Hoshi, Takashi Ohnishi, Seishi Jinnouchi, Shigemi Futami, Shigeki Nagamachi, Takao Kodama, Katsuchi Watanabe, Takashi Ueda and Shinichiro Wakisaka
- 51 Kinetics of 14(R,S)-Fluorine-18-Fluoro-6-Thia-Heptadecanoic Acid in Normal Human Hearts at Rest, During Exercise and After Dipyridamole Injection**
Andreas Ebert, Hans Herzog, Gerhard L. Stöcklin, Michael M. Henrich, Timothy R. DeGrado, Heinz H. Coenen and Ludwig E. Feinendegen
- 57 Iodine-123-Tyr-Octreotide Uptake in Pancreatic Endocrine Tumors in Carcinoids in Relation to Hormonal Inhibition by Octreotide**
Marie Nocaudie-Calzada, Damien Huglo, Marc Deveaux, Bruno Carnaille, Charles Proye and Xavier Marchandise
- 63 Dosimetry and Toxicity of Samarium-153-EDTMP Administered for Bone Pain Due to Skeletal Metastases**
John E. Bayouth, Daniel J. Macey, Leela P. Kasi and Frank V. Fossella
- 70 Measuring Lung Shunting in Hepatocellular Carcinoma with Intrahepatic-Arterial Technetium-99m-Macroaggregated Albumin**
Wai-tong Leung, Wan-yea Lau, Stephen K.W. Ho, Michael Chan, Nancy W.Y. Leung, Joanna Lin, Con Metreweli, Philip J. Johnson and Arthur K.C. Li
- 74 The Efficacy of Indium-111-Polyclonal IgG for the Detection of Infection and Inflammation**
Frederick L. Datz, Carol E. Anderson, Raj Ahluwalia, John H. Whiting, Frank V. Gabor, Kathryn A. Morton, Paul E. Christian, Kelly Crebs, Maggie Neptune and Donald A. Rauh
- 84 Fractional Mean Transit Time in Transplanted Kidneys Studied by Technetium-99m-DTPA: A Comparison of Clinical and Biopsy Findings**
Sonoo Mizuiri, Ikuko Hayashi, Masaaki Takano, Ryuzo Ban, Takehiro Ohara, Yasuhiro Sasaki and Akira Hasegawa

CASE REPORTS

- 90 Positron Emission Tomography with Fluorine-18-Fluorodeoxyglucose for the Evaluation of Therapeutic Isolated Regional Limb Perfusion in a Patient with Soft-Tissue Sarcoma**
Omgo E. Niewig, Jan Pruijm, Harald J. Hoekstra, Anne M.J. Paans, Willem Vaalburg, Jan Oldhoff and Heimen Schraffordt Koops
- 93 Intraperitoneal Leakage of Technetium-99m-DTPA Following Renal Transplantation: A Sign of Chylous Ascites**
Kazuo Itoh, Katsutoshi Tanda, Chietsugu Kato, Kouichi Kanagawa and Toshimori Seki
- 95 Scintigraphic Detection of Osteomyelitis in Osteopetrosis**
Cornelia Puskas and Joachim Sciuk

LABORATORY STUDIES

- 97 Accumulation of 2-Deoxy-2[¹⁸F]Fluoro-D-Glucose in Human Cancers Heterotransplanted in Nude**

Mice: Comparison Between Histology and Glycolytic Status

Takashi Yoshioka, Hiromu Takahashi, Hirosuke Oikawa, Synuichi Maeda, Akira Wakui, Tadashi Watanabe, Fumiaki Tezuka, Tohru Takahashi, Tatuio Ido and Ryunosuke Kanamaru

- 104 Microautoradiographic Study for the Differentiation of Intratumoral Macrophages, Granulation Tissues and Cancer Cells by the Dynamics of Fluorine-18-Fluorodeoxyglucose Uptake**
Roko Kubota, Kazuo Kubota, Susumu Yamada, Masao Tada, Tatsuo Ido and Nobuaki Tamahashi
- 113 The Influence of Tracer Localization on the Electron Dose Rate Delivered to the Cell Nucleus**
Marc Farragi, Isabelle Gardin, Claire de Labriolle-Vaylet, Jean-Luc Moretti and Bernard D. Bok
- 120 Lack of Correlation Between Tritiated Deoxyglucose, Thallium-201 and Technetium-99m-MIBI Cell Incorporation Under Various Cell Stresses**
Daniel O. Slosman and Jérôme Pugin
- 127 Investigations of Ascorbate for Direct Labeling of Antibodies with Technetium-99m**
D.J. Hnatowich, F. Virzi, P. Winnard, Jr., M. Fogarasi and M. Rusckowski
- 135 An Evaluation of Lesion Detectability with Cone-Beam, Fanbeam and Parallel-Beam Collimation in SPECT by Continuous ROC Study**
Jiaying Li, Ronald J. Jaszczak, Timothy G. Turkington, Charles E. Metz, Dave R. Gilland, Kim L. Greer and R. Edward Coleman
- 141 Editorial: Clinical Cone-Beam SPECT**
Alden N. Bice

COMPUTER SIMULATION

- 143 Comparison of Four Scatter Correction Methods Using Monte Carlo Simulated Source Distributions**
Michael H. Ljungberg, Michael A. King, George J. Hademenos and Sven-Erik Strand
- 152 Absorbed Fractions for Electrons and Beta Particles in Spheres of Various Sizes**
Jeffry A. Siegel and M.G. Stabin
- 157 Magnetically Enhanced Radionuclide Therapy**
Raymond R. Raylman and Richard L. Wahl

METHODOLOGY

- 164 Standardized Uptake Values of FDG: Body Surface Area Correction Is Preferable to Body Weight Correction**
Chun K. Kim, Naresh C. Gupta, B. Chandramouli and Abass Alavi

EDITORIAL

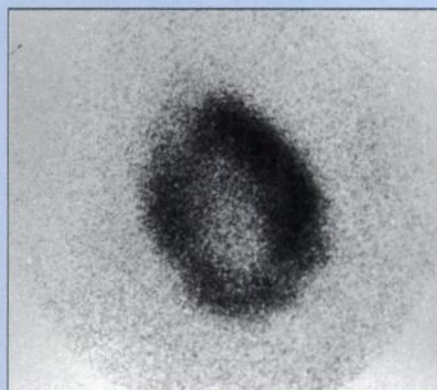
- 168 Something Borrowed, Something Blue**
Stanley J. Goldsmith

POSITION STATEMENT

- 169 Cardiovascular Nuclear Medicine Training Guidelines**
E. Gordon DePuey, Jeffrey S. Borer, Kenneth A. Brown,

FIRST IMPRESSIONS

Nonuniform tracer distribution. For acquisition information, turn to page 83.



Manuel D. Cerqueira, Margaret LaManna, Warren H. Moore and Frans J. Th. Wackers on behalf of the Cardiovascular Council of the Society of Nuclear Medicine

CLINICOPATHOLOGIC CONFERENCE

- 179 Technetium-99m-Pertechnetate Salivary Gland Imaging: Its Role in the Diagnosis of Warthin's Tumor**
Gregory S. Weinstein, Robert H. Harvey, Wayne Zimmer, Suat Ter and Abass Alavi

DEPARTMENTS

- 26 Erratum**
- 57 Erratum**
- 112 Erratum**
- 184 Letters to the Editor**
- 193 Information for Authors**
- 31A Calendar**
- 35A New Products**
- 38A Classified Advertising**
- 41A JNM Direct Response**

Correction

Due to a production error, the page number and image for the First Impressions in the December 1993 *JNM* was printed incorrectly. The correct page was 2143. The corrected image and text appear on page 112 in this issue.