

JNM



Official Publication of
The Society of Nuclear Medicine

SNM NEWSLINE

- 17N Low-Level Radioactive Waste Sites: Still a Political Football**
Maryanne Shanahan
- 25N NRC Proposed Amendments: Too Little, Too Late?**
Mark A. Newman
- 27N Commentary: The Future of Nuclear Medicine: Autonomy or Integration?**
Henry N. Wagner, Jr., MD, and B. Leonard Holman, MD
- 32N Lines from the President**
Richard C. Reba, MD

HUMAN STUDIES

- 1397 The Role of Iodine-123-Tyr-3-Octreotide Scintigraphy in the Staging of Small-Cell Lung Cancer**
T. Leitha, S. Meghdadi, M. Studnicka, M. Woltz, P. Angelberger, M. Neumann, W. Schlick, K. Kletter and R. Dudczak
- 1403 Scintimetric Evaluation of Remodeling After Bone Fractures in Man**
Jörg Spitz, Isabelle Lauer, Klaus Tittel and Hanfried Weigand
- 1410 Diagnosis of Partial and Total Physeal Arrest by Bone Single-Photon Emission Computed Tomography**
Michel Wioland and Valerie Bonnerot
- 1416 Quantitative Analysis of the Technetium-99m-DTPA Captopril Renogram: Contribution of Washout Parameters to the Diagnosis of Renal Artery Stenosis**
Holley M. Dey, Paul B. Hoffer, Emanuel Lerner, I. George Zubal, John F. Setaro and Henry R. Black
- 1420 Initial Assessment of Positron Emission Tomography Using Fluorine-18-Fluoro-2-Deoxy-D-Glucose in the Imaging of Malignant Melanoma**
Lyndon S. Gritters, Isaac R. Francis, Kenneth R. Zasadny and Richard L. Wahl
- 1428 Technetium-99m-HMPAO-Labeled Leukocytes and Technetium-99m-Labeled Human Polyclonal Immunoglobulin G in Diagnosis of Focal Purulent Disease**
Ilo Hovi, Matti Taavitsainen, Tuomo Lantto, Martti Vorne, Robert Paul and Kari Remes
- 1435 Lymphoscintigraphy in High-Risk Melanoma of the Trunk: Predicting Draining Node Groups, Defining Lymphatic Channels and Locating the Sentinel Node**

Roger F. Uren, Robert B. Howman-Giles, Helen M. Shaw, John F. Thompson and William H. McCarthy

- 1441 Evaluation of Pulmonary Systemic Blood Flow Using ECG Gated Acquisition**
Joao J. Pedroso de Lima, Maria Filomena R. Botelho, Jose A. S. Rafael, Joao Bernardo, Lino M. Goncalves, Maria de Fatima Pacheco, Cristina A. Santos, Antonio J. Pinto and Manuel D. Cerqueira
- 1447 SPECT in Patients with Cortical Visual Loss**
Isaac E. Silverman, Steven L. Galetta, Lawrence G. Gray, Mark Moster, Scott W. Atlas, Alan H. Maurer and Abass Alavi
- 1452 Regional Cerebral Blood Flow-SPECT in Chronic Alcoholism: Relation to Neuropsychological Testing**
Josep M. Nicolá, Ana M. Catafau, Ramón Estruch, Francisco J. Lomeña, Manuel Salamero, Ramón Herranz, Roser Monforte, Carlos Cardenal and Alvaro Urbano-Marquez
- 1460 Comparability of FDG PET Studies in Probable Alzheimer's Disease**
K. Herholz, D. Perani, E. Salmon, G. Franck, F. Fazio, W. D. Heiss and D. Comar
- 1467 Impact of Antianginal Medications, Peak Heart Rate and Stress Level on the Prognostic Value of a Normal Exercise Myocardial Perfusion Imaging Study**
Kenneth A. Brown and Michaelanne Rowan
- 1472 Nitrates Improve the Detection of Ischemic but Viable Myocardium by Thallium-201 Rejection SPECT**
Zuo-Xiang He, Jacques Darcourt, Alexandre Guignier, Emile Ferrari, Fraçoise Bussière, Marcel Baudouy and Philippe Morand
- 1478 Myocardial Perfusion Imaging and Dynamic Analysis with Technetium-99m Tetrofosmin**
Kenichi Nakajima, Junichi Taki, Noriyuki Shuke, Hisashi Bunko, Shigeo Takata and Kinichi Hisada
- 1485 Rapid Back to Back Adenosine Stress/Rest Technetium-99m Teboroxime Myocardial Perfusion SPECT Using a Triple-Detector Camera**
Terrance Chua, Hosen Kiat, Guido Germano, Kent Takemoto, Geraldine Fernandez, Yolanda Biasio, John Friedman and Daniel Berman
- 1494 Quantitative Same-Day Rest-Stress Technetium-99m Sestamibi SPECT: Definition and Validation of Stress Normal Limits and Criteria for Abnormality**
Kenneth F. Van Train, Joseph Areeda, Ernest V. Garcia, C. David Cooke, Jamshid Maddahi, Hosen Kiat, Guido Germano, Gerrard Silagan, Russell Folks and Daniel S. Berman
- 1503 Detection of Doxorubicin Cardiotoxicity in Patients with Sarcomas by Indium-111-Antimyosin Monoclonal Antibody Studies**
Ignasi Carrió, Antonio Lopez-Pousa, Montserrat Estorch, David Duncker, Lluís Berná, Gustavo Torres and Luis de Andrés
- 1507 Editorial: Antimyosin Positivity in Doxorubicin Cardiotoxicity: Earlier Than the Conventional Evidence**
Jagat Narula, H. William Strauss and Ban An Khaw

1510 Teboroxime, Sestamibi and Thallium-201 as Markers of Myocardial Hypoperfusion: Comparison by Quantitative Dual-Isotope Autoradiography in Rabbits

Howard Weinstein, Christopher P. Reinhardt and Jeffrey A. Leppo

1518 Editorial: Measurement of Myocardial Blood Flow by Radiolabeled Tracers

Richard A. Wilson

1520 Load Independence of Early Diastolic Filling Parameters in the Anesthetized Canine Model

Jose M. Garrido, Myron C. Gerson, Brian D. Hoit and Richard A. Walsh

1529 Myocardial Substrate Utilization and Left Ventricular Function in Adriamycin Cardiomyopathy

Shigetoshi Wakasugi, Alan J. Fischman, John W. Babich, Ronald J. Callahan, David R. Elmaleh, Robert Wilkinson and H. William Strauss

1536 Chemistry and Biological Behavior of Samarium-186-Labeled Hydroxylapatite Particles: Potential Radiopharmaceuticals for Radiation Synovectomy

Marco Chinol, Shankar Vallabhajosula, Stanley J. Goldsmith and Michael J. Klein

1543 Phosphoinositide Turnover Imaging Linked to Muscarinic Cholinergic Receptor in the Central Nervous System by Positron Emission Tomography

Yoshio Imahori, Ryou Fuji, Satoshi Ueda, Yoshio Ohmori, Kazuo Wakita and Keigo Matsumoto

1552 A Distributed Pharmacokinetic Model of Two-Step Imaging and Treatment Protocols: Application to Streptavidin-Conjugated Monoclonal Antibodies and Radiolabeled Biotin

William W. van Osdol, Cynthia Sung, Robert L. Dedrick and John N. Weinstein

1565 SIMS Microscopy Imaging of the Intratumor Biodistribution of Metalodobenzylguanidine in the Human SK-N-SH Neuroblastoma Cell Line Xenografted into Nude Mice

J. Clerc, S. Halpern, C. Fourré, F. Omri, C. Briançon, J. Jeusset and P. Fragu

CASE REPORTS

1571 Lung Tumor Metastasis to Breast Detected by Fluorine-18-Fluorodeoxyglucose PET

George J. Hunter, Noah C. Choi, Theresa C. McLoud and Alan J. Fischman

1574 Paradoxical Changes in Iodine-131 Scintigraphic Findings in Advanced Follicular Thyroid Cancer

Lalitha Krishna, Simin Dadparvar, Luther W. Brady, Bizhan Micaily, Mary Mehofer, Walter J. Slizofski, Steven J. Brown, Anita Chevres, Regina Roman and Angabeen S. Khan

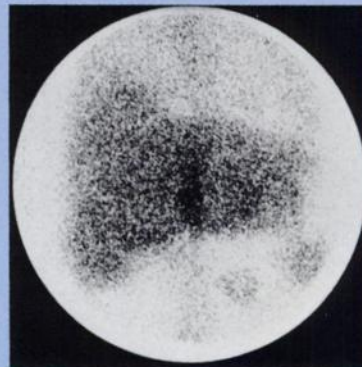
METHODOLOGY

1577 Fast Transmission CT for Determining Attenuation Maps Using a Collimated Line Source, Rotatable Air-Copper-Lead Attenuators and Fan-Beam Collimation

R. J. Jaszczak, D. R. Gilliland, M. W. Hanson, S. Jang, K. L. Greer and R. E. Coleman

FIRST IMPRESSIONS

History and correlation with prior imaging studies are essential to diagnosis in complex clinical situations. For acquisition information, turn to page 1493.



1587 Accuracy of Registration of PET, SPECT and MR Images of a Brain Phantom

Timothy G. Turkington, Ronald J. Jaszczak, Charles A. Pelizzari, C. Craig Harris, James R. MacFall, John M. Hoffman and R. Edward Coleman

1595 Three-Dimensional Dosimetry for Radioimmunotherapy Treatment Planning

George Sgouros, Stephen Chiu, Keith S. Pentlow, Linda J. Brewster, Hovanes Kalaigian, Bernard Baldwin, Farhad Daghigian, Martin C. Graham, Steven M. Larson and Radhe Mohan

1602 Left Ventricular Systolic and Diastolic Function Measurements Using an Ambulatory Radionuclide Monitor: Effects of Different Time Averaging on Accuracy

Leonardo Pace, Alberto Cuocolo, Maria Luisa Mangoni Di S. Stefano, Antonio Nappi, Emanuele Nocolai, Massimo Imbriaco, Bruno Trimarco and Marco Salvatore

1607 A Scintigraphic Sign for Detection of Right-to-Left Shunts

A. Semih Dogan, Karim Rezai, Peter T. Kirchner and John E. Stuhlmuller

CLINICOPATHOLOGIC CONFERENCES

1612 Uptake of Technetium-99m MDP in Primary Amyloidosis with a Review of the Mechanisms of Soft Tissue Localization of Bone-Seeking Radiopharmaceuticals

Daniel F. Worsley, Brian C. Lentle and Abass Alavi

DEPARTMENTS

1616 Letters to the Editor

32A New Products

38A Calendar

40A Classified Advertising

48A JNM Direct Response