

# JNM



Official Publication of  
The Society of Nuclear Medicine

## SNM NEWSLINE

- 17N** **Commentary: Highlights of the Asia and Oceania Nuclear Medicine Congress**  
*Wilfrido M. Sy, MD*
- 22N** **Annual Meeting: Trends in Basic and Clinical Research**
- 23N** **Mallinckrodt Fellowship: Can Anti-Sense Probes Help Patients with Drug Resistant Tumors?**  
*J. Rojas-Burke*
- 24N** **Hevesy Award: C. Craig Harris Honored for Four Decades of Nuclear Medicine Pioneering**  
*Mark A. Newman*
- 26N** **Aebersold Award: Chemists Share Honors**
- 28N** **News Briefs: In Search of Radioactive Snake Venom, NRC Frowns on LLRW Storage, How Popular is Nuclear Waste?, Going Without Health Care, plus the E&R Fellowship and Pilot Research Grant Winners**

## HUMAN STUDIES

- 717** **Concordance of Nutritive Myocardial Perfusion Reserve and Flow Velocity Reserve in Conductance Vessels in Patients with Chest Pain with Angiographically Normal Coronary Arteries**  
*Marc E. Shelton, Martha J. Senneff, Philip A. Ludbrook, Burton E. Sobel, Steven R. Bergmann, Michael Curtis and Judy J. Hartman*
- 723** **Regional Cerebral Blood Flow Improves with Treatment in Chronic Cocaine Polydrug Users**  
*B. Leonard Holman, Jack Mendelson, Basem Garada, Siew Koon Teoh, Elizabeth Hallgring, Keith A. Johnson and Nancy K. Mello*
- 728** **Role of Quantitative Planar Thallium-201 Imaging for Determining Viability in Patients with Acute Myocardial Infarction and a Totally Occluded Infarct-Related Artery**  
*Peter J. Sabia, Eric R. Powers, Michael Ragosta, William H. Smith, Denny D. Watson and Sanjiv Kaul*
- 737** **Immediate Thallium-201 ReInjection Following Stress Imaging: A Time-Saving Approach for Detection of Myocardial Viability**  
*Berthe L. F. van Eck-Smit, Ernst E. van der Wall, Aaf F. M. Kuijper, Aelko H. Zwinderman and Ernest K. J. Pauwels*

- 743** **Editorial: Thallium ReInjection Imaging: The Search for an Optimal Protocol**

*Abdulmassih S. Iskandrian*

- 747** **Effects of Alterations in Systolic Pressure on Radionuclide Measurements of Left Ventricular Filling Dynamics**

*Scott H. McCallister, Jack E. Juni, John F. Hibbelin and Mark R. Starling*

- 754** **Comparison of Technetium-99m-ECD to Xenon-133 SPECT in Normal Controls and in Patients with Mild to Moderate Regional Cerebral Blood Flow Abnormalities**

*Michael D. Devous, Sr., J. Kelly Payne, James L. Lowe and Robert F. Leroy*

- 762** **Normalized Clearance-to-Uptake Slope Ratio: A Method to Minimize False-Positive Diuretic Renograms**

*Babington C. K. Yung, Samuel Sostre and John P. Gearhart*

- 769** **Radiation Dose to Positron Emission Tomography Technologists During Quantitative Versus Qualitative Studies**

*Vincent A. McCormick and Joseph A. Miklos*

## LABORATORY STUDIES

- 773** **In Vitro Assessment of 2-Fluoro-Deoxy-D-Glucose, L-Methionine and Thymidine as Agents to Monitor the Early Response of a Human Adenocarcinoma Cell Line to Therapy**  
*Kotaro Higashi, Anaira C. Clavo and Richard L. Wahl*
- 780** **High Accumulation of 2-Deoxy-2-Fluorine-18-Fluoro-D-Galactose by Well-Differentiated Hepatomas of Mice and Rats**  
*Hiroshi Fukuda, Jutaro Takahashi, Takehiko Fujiwara, Keiichirou Yamaguchi, Yoshinao Abe, Kazuo Kubota, Tachio Sato, Hidemitsu Miyazawa, Jun Hatazawa, Masao Tada, Kiichi Ishiwata and Tatsuo Ido*
- 787** **Selective Localization of a Radioiodinated Phospholipid Ether Analog in Human Tumor Xenografts**  
*Kathleen P. Plotzke, Susan J. Fisher, Richard L. Wahl, Norman M. Olken, Scott Skinner, Milton D. Gross and Raymond E. Counsell*
- 793** **Changes in Local Cerebral Glucose Utilization in the Awake Rat During Acute and Chronic Administration of Ethanol**  
*Frank Grünwald, Helmut Schröck, Hans-J. Biersack and Wolfgang Kuschinsky*
- 798** **Editorial: From the Cradle to Grave: Alcohol and Its Effects Upon the Brain**  
*M. Cooper, J. Metz, J. Mukherjee and H. DeWit*

## CASE REPORTS

- 804** **False-Positive Lymph Nodes by Radioimmunoguided Surgery: Report of a Patient and Analysis of the Problem**  
*Arvil D. Stephens, Usha Punja and Paul H. Sugarbaker*

**809 Bronchogenic Carcinoma Mimicking Metastatic Thyroid Carcinoma**

*Barbara G. Haubold-Reuter, Ursula Landolt and Gustav K. v. Schulthess*

**812 Indium-111-Labeled Leukocyte Scintigraphy in a Case of Cutaneous Sarcoidosis**

*Chihoko Miyazaki, Kikuo Tsuchiya and Kazuo Itoh*

**815 Technetium-99m-Dimercaptosuccinic Acid Uptake in Intra-abdominal Massive Deposit of Amyloid Protein**

*Hisataka Kobayashi, Harumi Sakahara, Tsuyoshi Itoh, Takashi Kudoh, Takehisa Takagi, Keiko Shibuya, Shigeo Nomura, Makoto Hosono, Keigo Endo and Junji Konishi*

**818 Indium-111-Leukocyte Imaging in Gaucher's Disease**

*Christopher J. Palestro and Colleen Finn*

**METHODOLOGY**

**821 Radiation Dose Estimates for the Carbon-14-Labeled Urea Breath Test**

*James B. Stubbs and Barry J. Marshall*

**826 Estimation of Left Ventricular Mass and Infarct Size From Nitrogen-13-Ammonia PET Images Based on Pathological Examination of Explanted Human Hearts**

*Dominique Delbeke, Christine H. Lorenz, John R. Votaw, Susan T. Silveira, William H. Frist, James B. Atkinson, Robert M. Kessler and Martin P. Sandler*

**834 Editorial: How Can Positron Emission Tomography Help Evaluate Patients Before and After Heart Transplantation?**

*Maleah Grover-McKay*

**839 Functioning Mapping of Flow and Back-Diffusion Rate of N-Isopropyl-p-Iodoamphetamine in Human Brain**

*Yoshiharu Yonekura, Sadahiko Nishizawa, Takao Mukai, Yasushi Iwasaki, Hidenao Fukuyama, Masatsune Ishikawa, Nagara Tamaki and Junji Konishi*

**845 Validation of Renal Output Efficiency as an Objective Quantitative Parameter in the Evaluation of Upper Urinary Tract Obstruction**

*Thawachai Chaiwatanrat, Ajit K. Padhy, Jamshed B. Bomanji, Cyril C. Nimmon, Kerin Sonmezoglu and Keith E. Britton*

**CLINICOPATHOLOGIC CONFERENCES**

**849 Scintigraphic Evaluation of Liver Masses: Cavernous Hepatic Hemangioma**

*Raymond A. Rubin and Gary L. Lichtenstein*

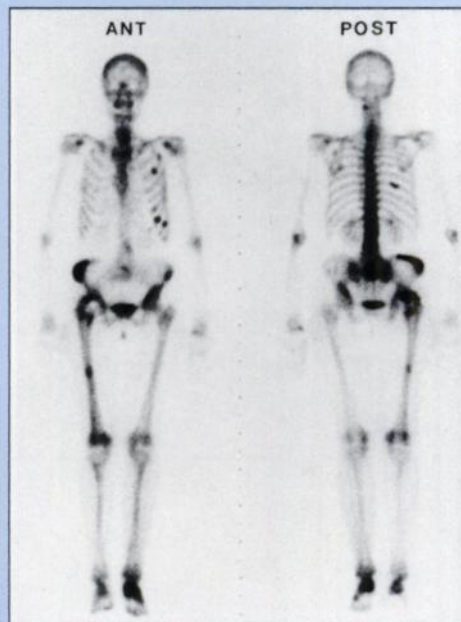
**CONTINUING EDUCATION**

**853 Gallium-67 Scintigraphy in Tuberculous and Nontuberculous Infectious Spondylitis**

*R. Lisbona, V. Derbekyan, J. Novales-Diaz and A. Veksler*

**FIRST IMPRESSIONS**

A 59-yr-old woman with metastatic breast cancer underwent a bone scan to evaluate her skeletal metastases. For acquisition information, turn to page 864.



**COMMENTARY**

**860 Tough Choices: Who Is to Make the Call?**

*Morton E. Kalus, Jr.*

**EDITORIAL**

**862 Editorial: Parametric Images for Quantitative Measurements of Regional Myocardial Blood Flow in Humans: A Step in the Right Direction**

*Henry Gewirtz*

**DEPARTMENTS**

**736 Self-Study Test**

**768 Erratum**

**838 Erratum**

**865 Letters to the Editor**

**Book Reviews**

**868 Radiological Assessment: Sources and Exposures**  
*Reviewed by Frank P. Castronovo, Jr.*

**868 Practical Nuclear Medicine**  
*Reviewed by R. Edward Coleman*

**869 Imaging of Sports Injuries: A Multimodality Approach**  
*Reviewed by James A. Scott*

**871 In Memoriam**

**41A New Products**

**42A Calendar**

**50A Classified Advertising**