

5. MOSHAKIS V, MCILHINNEY RAJ, RAGHAVAN D, et al: Localization of human tumour xenografts after i.v. administration of radiolabelled monoclonal antibodies. *Br J Cancer* 44: 91-99, 1981
6. BALLOU B, LEVINE G, HAKALA TR, et al: Tumor location detected with radioactively labelled monoclonal antibody and external scintigraphy. *Science* 206: 844-846, 1979
7. HOUSTON LL, NOWINSKI RC, BERNSTEIN ID: Specific *in vivo* localization of monoclonal antibodies directed against the Thy 1.1 antigen. *J Immunol* 125: 837-843, 1980
8. BEGENT RHJ, GREEN AJ, BAGSHAWE KD, et al: Liposomally entrapped second antibody improves tumour imaging with radiolabelled (first) antitumour antibody. *Lancet* 2: 739-742, 1982
9. MACH JP, BUCHEGGER F, FORNI M, et al: Use of radiolabelled monoclonal anti-CEA antibodies for the detection of human carcinomas by external photoscanning and tomoscintigraphy. *Immunology Today* 2: 239-249, 1981
10. PRIMUS FJ, NEWELL KD, BLUE A, et al: Immunological heterogeneity of carcinoembryonic antigen: Antigen determinants on carcinoembryonic antigen distinguished by monoclonal antibodies. *Cancer Res* 43: 686-692, 1983
11. GAFFAR SA, PANT KD, SHOCHAT D, et al: Experimental studies of tumor radioimmunodetection using antibody mixtures against carcinoembryonic antigen (CEA) and colon-specific antigen-p (CSAp). *Int J Cancer* 27: 101-105, 1981
12. GOLDENBERG DM: An introduction to the radioimmunodetection of cancer. *Cancer Res* 40: 2957-2959, 1980
13. GOLDENBERG DM, DELAND FH: History and status of tumor imaging with radiolabeled antibodies. *J Biol Response Modifiers* 1: 121-136, 1982
14. GOLDENBERG DM, KIM EE, DELAND FH, et al: Radioimmunodetection of cancer with radioactive antibodies to carcinoembryonic antigen. *Cancer Res* 40: 2984-2992, 1980
15. DYKES PW, HINE KR, BRADWELL AR, et al: Localisation of tumour deposits by external scanning after injection of radiolabelled anti-carcinoembryonic antigen. *Br Med J* 280: 220-222, 1980
16. GOLDENBERG DM, KIM EE, BENNETT SJ, et al: Carcinoembryonic antigen radioimmunodetection in the evaluation of colorectal cancer and in the detection of occult neoplasms. *Gastroenterology* 1983 (in press)
17. GOLDENBERG DM, KIM EE, DELAND F, et al: Clinical studies on the radioimmunodetection of tumors containing alpha-fetoprotein. *Cancer* 45: 2500-2505, 1980
18. HALSALL AK, FAIRWEATHER DS, BRADWELL AR, et al: Localisation of malignant germ-cell tumours after injection of radiolabelled anti-alpha-fetoprotein. *Br Med J* 283: 942-944, 1981
19. GOLDENBERG DM, KIM EE, DELAND FH, et al: Radioimmunodetection of cancer using radioactive antibodies to human chorionic gonadotropin. *Science* 208: 1284-1286, 1980
20. GOLDENBERG DM, KIM EE, DELAND FH: Human chorionic gonadotropin radioantibodies in the radioimmunodetection of cancer and for disclosure of occult metastases. *Proc Natl Acad Sci USA* 78: 7754-7758, 1981
21. FAIRWEATHER DS, BRADWELL AR, DYKES PW: Monoclonal antibodies for in-vivo localisation. *Lancet* 2: 660, 1982
22. GOLDENBERG DM, DELAND FH, BENNETT SJ, et al: In vivo use of radioactive antibodies against prostatic acid phosphatase for the diagnosis and detection of prostatic cancer by nuclear imaging. *J Am Med Assoc*, 1983, in press

Erratum

In the article entitled "Imaging of Melanoma with I-131-Labeled Monoclonal Antibodies," February 1983, Volume 24, pp. 123-129, Figure 2 should appear as follows:

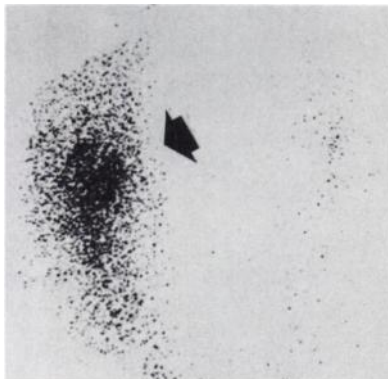


FIG. 2. Patient M.R. (No. 5 in Table 1). *Posterior scintigram of popliteal fossae.* In right popliteal fossa, uptake is seen in metastatic melanoma. Scintigram obtained 48 hr after injection; image is unprocessed.