

TUMOR SCANNING WITH ^{169}Yb -CITRATE

Kinichi Hisada, Norihisa Tonami, Tatsunosuke Hiraki, and Atsushi Ando

Kanazawa University, Kanazawa, Japan

The results of tumor scanning with ^{169}Yb are presented. Positive scans were obtained in 13 of 15 patients with primary lung and liver cancer or lymphosarcoma and various metastatic lesions of bone. The advantages and disadvantages of ^{169}Yb as a tumor-scanning agent are discussed.

Tumor scanning implies scintigraphy that can delineate focus as a positive image if a lesion is malignant. In certain specific areas such as the brain, positive delineation is not difficult. Certain tumors have the ability to accumulate specific substances; these include some types of thyroid cancer, chondrosarcoma, and malignant melanoma. The search for a single radiopharmaceutical that would be incorporated into all kinds of malignant tumors, regardless of anatomic location, has been carried out over several years by many groups [radiopharmaceuticals used on trial in clinical tumor scanning are listed elsewhere (1)], but these have not yet been perfected. Our previous report comparing clinical results with ^{67}Ga -citrate, ^{197}Hg -chlormerodrin, and ^{131}I -human fibrinogen (1) shows that ^{67}Ga -citrate gives the highest rate of detection of the lesion and the best image with relatively sharp margin, but it is not useful for differentiating a malignant tumor from a benign lesion because of its high false-positive rate.

The need for a compound with better tumor affinity than ^{67}Ga -citrate has prompted us to use a radio-lanthanide on the basis of promising results of animal experiments (2). For practical reasons, ^{169}Yb -citrate was selected. The ^{169}Yb is readily available and is a less expensive reactor-produced nuclide than is ^{167}Tm which is not yet available in Japan and will be an expensive cyclotron-produced nuclide when it becomes available. Ytterbium-169 has a physical half-life of 32 days and primarily emits

gamma rays (8–308 keV). The predominant energies of the gamma rays which are suitable for scintigraphy are 63 and 198 keV (3).

SCINTIGRAPHY AND RESULTS

Ytterbium-169-citrate was prepared and supplied for human use by Dainabot Radioisotope Laboratory, Ltd., Tokyo. Its specific activity ranged from 370 to 448 mCi/mg at time of injection. All subjects were selected from among volunteers with a variety of known malignancies for the purpose of more precise localization of focus in radiation therapy.

One-half to 1 mCi of ^{169}Yb -citrate (approximately 1 ml containing 2 mg of citric acid) was administered intravenously to each patient. Scintiphotos were obtained at intervals from 1 to 5 days following the administration. A Nuclear-Chicago Pho/Gamma III camera was used with a 1,000-hole parallel collimator for accumulating more than 50 K counts. Window width was $\pm 15\%$ and centered in one of the photopeaks of ^{169}Yb (198 keV). In our 15 cases, no side-effect has been observed. Figure 1 shows a case with pulmonary cancer. P-A and lateral chest x-ray films showed a primary focus at a right posterior basal segment and metastasis to the left fourth rib. The scintiphoto at 72 hr after injection very distinctly visualized the primary focus as well as a metastatic bony lesion and also disclosed a hilar metastasis which was not found on x-ray. In addition to this information, the spinal column was delineated clearly which was useful as an anatomical landmark. Figure 2 shows another proven case with liver cirrhosis accompanied by a hepatoma. A ^{198}Au -colloid scan showed a large space-occupying lesion

Received Aug. 18, 1972; revision accepted Apr. 12, 1973. Originally appeared in *J Nucl Med* 14: 772–773, 1973, without figures.

For reprints contact: Kinichi Hisada, Dept. of Nuclear Medicine, School of Medicine, Kanazawa University, 13-1 Takara-machi, Kanazawa-shi, Japan.

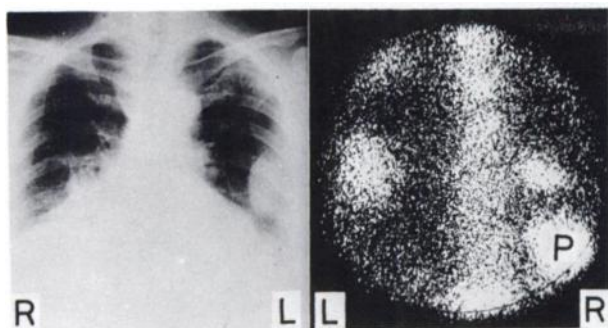


FIG. 1. 53-year-old male with right pulmonary cancer (right posterior basal segment). P-A chest x-ray film (left) shows primary focus in right lower lobe and metastasis to left fourth rib. Posterior scintiphoto (right) of chest 72 hr after administration of 500 μ Ci of ^{169}Yb citrate. Marked accumulation of ^{169}Yb is seen in primary focus (indicated by "P") as well as in metastatic lesions. Scintiphoto disclosed hilar metastasis which was not found on x-ray.

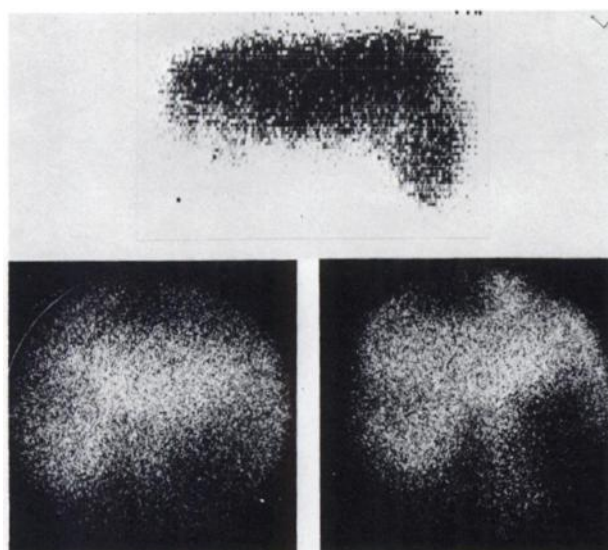


FIG. 2. 41-year-old male with liver cirrhosis accompanied by a hepatoma. (top) Photoscan using 100 μ Ci of ^{199}Au colloid showed large space-occupying lesion in lower portion of right lobe of liver and marked visualization of spleen. (bottom left) In scintiphoto obtained 48 hr after 1 mCi of injection of ^{67}Ga citrate, accumulation of tracer into tumor could be detected. (bottom right), but in scintiphoto 48 hr after 1 mCi of ^{169}Yb citrate, tumor image was more clearly visualized. The accumulation of ^{169}Yb in the lumbar vertebra did not obscure tumor image.

in the lower portion of the right lobe of the liver and marked visualization of the spleen. Both scintiphotos, obtained 48 hr after injection of ^{67}Ga -citrate and ^{169}Yb -citrate, disclosed a distinct accumulation of tracer into the hepatoma. The ^{169}Yb tumor image was clearer than the ^{67}Ga tumor image mainly because of a lower background in soft tissue. The accumulation of ^{169}Yb in the lumbar spine did not obscure the tumor image in this case. In 13 of 15 cases, the tumors were positively delineated. These included five cases with primary lung cancer, two with primary liver cancer, two metastatic liver cancers, one lymphosarcoma of the neck, one cancer of the oral cavity, one metastatic cancer of the skull

from Ewing's sarcoma of lower leg, and one with metastatic cancer of the pelvis and sternum from nasopharyngeal cancer. Scintigraphic delineation of a tumor could not be obtained in two cases, the first of esophageal cancer in the neck and the second of mediastinal tumor. In these two cases the radioactivity in the spinal column and sternum might have obscured the lesions.

DISCUSSIONS AND CONCLUSIONS

Although the mechanism of isotope localization within the tumor is unknown at this time, it is quite definite that ^{169}Yb -citrate can be used for tumor scanning. To discuss precisely superiority or inferiority of ^{169}Yb -citrate to ^{67}Ga -citrate, direct comparison will be needed in the same group of patients. However, the main peak of gamma rays of ^{169}Yb (178, 198 keV) is very close to that of ^{67}Ga (184 keV), and it is not easy to distinguish ^{67}Ga and ^{169}Yb by a conventional scintillation camera or scanner so that one must wait to administer ^{169}Yb -citrate to the patient until ^{67}Ga given previously will decay. The result of this direct comparison will be reported in a future communication.

The advantages and disadvantages of ^{169}Yb -citrate tumor scintigraphy are as follows.

Advantages.

1. Since ^{169}Yb has a relatively long shelf-life (physical half-life is 32 days), ^{169}Yb can be available any time when tumor scintigraphy is required.
2. ^{169}Yb is a reactor-produced nuclide and much cheaper than ^{67}Ga which is a cyclotron-produced nuclide.
3. The main peak of gamma rays of ^{169}Yb is 198 keV and suitable for scintigraphy.
4. Body background in soft tissues is extremely low, especially 3–5 days after injection, and tumor images are obtained very clearly.
5. Distinct visualization of the skeleton is helpful in localizing the tumor to the anatomical landmark.

Disadvantages.

1. The skeletal image might obscure the tumor image when superimposed. For instance, if the lesion in the mediastinum is hidden by the spinal column and sternum, oblique or lateral views are recommended.
2. Exposure to the patient is relatively high. Clinical data are available of effective half-life of ^{169}Yb -citrate on only one patient because tumor scanning is rarely performed without being preceded by other nuclide organ scanning at the present time. The effective half-life was 11.8 hr in the fast phase (40% of a dose administered) and 26.9 days in the slow phase (60%). Dose calculation was made according to the MIRD formula (all physical data of ^{169}Yb were

obtained from E. M. Smith). A 0.5-mCi dose of ^{169}Yb -citrate in a patient weighing 50 kg delivered 1.74 rads to the whole body and 5.77 rads to the bone. Radiation doses were comparable to those of other agents currently in use, ^{203}Hg -chlormerodrin or ^{75}Se -selenomethionine.

ACKNOWLEDGMENT

This work was supported by a grant in aid for Co-operative Research (Cancer) from the Japanese Education Ministry No. 92212 and by a grant for Cancer Research from the Japanese Ministry of Health and Welfare. The authors

wish to thank S. Kato, President of Dainabot Radioisotope Laboratory, Japan, for providing ^{169}Yb -citrate.

REFERENCES

- HISADA K: Tumor (scanning and imaging). In *Technology and Interpretation of Nuclear Medicine Procedures*, Sodee DB, Early PJ, eds, St. Louis, CV Mosby, 1972, pp 416-428
- HISADA K, ANDO A: Radiolanthanides as promising tumor scanning agents. *J Nucl Med* 14: 615-617, 1973
- HOSAIN F, REBA RC, WAGNER HN: Ytterbium-169 diethylenetriaminepentaacetic acid complex. A new radio-pharmaceutical for brain scanning. *Radiology* 91: 1199-1203, 1968

Accepted Articles To Appear in Upcoming Issues

- Scintiscanning of Pulmonary Disease with ^{67}Ga -Citrate. Accepted 8/31/73.
- F. Kinoshita, T. Ushio, A. Maekawa, R. Ariwa, and A. Kubo
Inhibition of Formate and Formaldehyde Oxidation by Ethanol as an Index for Estimating Alcohol Concentration in Isolated Tissues (Concise Communication). Accepted 9/10/73.
- N. Tran and E. Lebel
False-Negative ^{75}Se -Selenomethionine Scans in Primary Liver Cancer. Accepted 9/13/73.
- M. C. Kew, E. W. Geddes, and J. Levin
Imaging Functional Nodules of the Adrenal Glands with ^{131}I -19-Iodocholesterol. Accepted 10/15/73.
- W. H. Beierwaltes, M. F. Sturman, U. Ryo, and R. D. Ice
Radionuclide Scanning of the Liver in Primary Hepatic Cancer (Case Report). Accepted 10/15/73.
- J. Levin, E. W. Geddes, and M. C. Kew
Improved Method of Labeling Thyroid Hormones with Radioiodine. Accepted 10/15/73.
- E. Hallaba and G. El-Shaboury
Toxicity of Sn-Pyrophosphate: Clinical Manifestations Prior to Acute LD₅₀. Accepted 10/15/73.
- J. S. Stevenson, W. C. Eckelman, P. Z. Sobocinski, R. C. Reba, E. L. Barron, and S. G. Levin
A Simple ^{133}Xe Delivery System for Studies of Regional Ventilation (Concise Communication). Accepted 10/15/73.
- R. H. Secker-Walker, J. Barbier, S. N. Wiener, and P. O. Alderson
Rapid Evaluation of Hepatic Size on Radioisotope Scan. Accepted 10/15/73.
- A. T. Rosenfield and P. B. Schneider
Correlation of Dose Rate and Biological Effect in Rat Liver Cells Resulting from X-ray, ^{113m}In and ^{198}Au Irradiation. Accepted 10/15/73.
- R. L. Witcofski, D. J. Pizzarello, E. M. Smith, H. Everhart, and T. R. Gnau
Evaluation of Clinical Value of ^{125}I and ^{131}I in Thyroid Disease. Accepted 10/15/73.
- H. Nishiyama, V. J. Sodd, R. A. Berke, and E. L. Saenger
Early Results of ^{125}I Therapy of Thyrotoxic Graves' Disease. Accepted 10/15/73.
- J. K. Siemsen, M. S. Wallack, R. B. Martin, and J. T. Nicoloff
 ^{99m}Tc -Pyrophosphate for Bone Imaging (Concise Communication). Accepted 10/15/73.
- W. C. Eckelman, R. C. Reba, H. Kubota, and J. S. Stevenson
Radionuclide Studies in Vascular Infantile Hemiplegia (Case Report). Accepted 10/15/73.
- J. F. Aita and J. W. Keyes, Jr.
Clinical Appraisal of an Experimental Converging Collimator (Concise Communication). Accepted 10/18/73.
- P. H. Murphy, J. A. Burdine, and M. Calderon
Splenic Radiocolloid Uptake in the Presence of Circulating Howell-Jolly Bodies (Concise Communication). Accepted 11/1/73.
- R. P. Spencer and H. A. Pearson
"Healing" of a Splenic Infarct (Case Report). Accepted 11/1/73.
- R. P. Spencer
Intestinal Absorption of Perchnetate: Calculation by the Oral/Intravenous Plasma Activity Quotients and Inverse Convolution Method (Letter to the Editor). Accepted 11/1/73.
- J. Szymendera and M. Radwan
The Author's Reply to Letter to the Editor. Accepted 11/1/73.
- M. Hays
Radiochemical Purity of ^{99m}Tc Perchnetate. Accepted 11/1/73.
- M. W. Billingham, M. Groothedde, and R. Palsler
Reduction of Scattered Radiation (Letter to the Editor). Accepted 11/1/73.
- P. Inia
The Authors' Reply to Letter to the Editor. Accepted 11/1/73.
- P. Bloch and T. Sanders
Radionuclide Perfusion of Hepatic Metastases (Letter to the Editor). Accepted 11/1/73.
- J. F. Rockett
The Authors' Reply to the Letter to the Editor. Accepted 11/1/73.
- S. H. Yeh, W. J. Shih, and J. C. Liang
Additional Data on Hepatic Flow Studies (Letter to the Editor). Accepted 11/1/73.
- V. Tirnakli and R. Blockeel
The Author's Reply to Letter to the Editor. Accepted 11/1/73.
- R. P. Spencer
The Author's Reply to Letter to the Editor. Accepted 11/1/73.
- A. D. Waxman
"Hot" Hepatic Abscess (Case Report). Accepted 11/6/73.
- Z. Chayes, M. Koenigsberg, and L. N. Freeman
Preoperative Diagnosis of Asymptomatic Choledochal Cyst by Rose Bengal Liver Scan (Case Report). Accepted 11/6/73.
- C. H. Park, J. H. Garafola, and A. E. O'Hara
 ^{111}In -Bleomycin Kinetics in Mice Bearing Transplantable Tumors of Lung, Skin, and Bone. Accepted 11/6/73.
- P. J. Robbins, E. B. Silberstein, and D. L. Fortman
 ^{67}Ga Localization in Acute Cerebral Infarction (Case Report). Accepted 11/6/73.
- R. J. Wallner, M. N. Croll, L. W. Brady
Positive ^{99m}Tc -Polyphosphate Bone Scan in a Case of Secondary Hypertrophic Osteoarthropathy (Case Report). Accepted 11/6/73.
- C. J. Kay and M. A. Rosenberg
Distribution and Retention of the Anti-tumor Agent Cis-dichlorodiammine Platinum (II)— ^{195m}Pt in Man (Concise Communication). Accepted 11/21/73.
- P. H. S. Smith and D. M. Taylor
Use of ^{131}I -CEA Antibody as a Tumor Scanning Agent. Accepted 11/21/73.
- P. B. Hoffer, K. Lathrop, C. Bekerman, V. S. Frank, and S. Retaf
Safety of ^{169}Yb -DTPA in Cisternography (Letter to the Editor). Accepted 11/21/73.
- R. L. Morin and F. H. DeLand
An Automated System for Measurement of Leukocyte Metabolism (Concise Communication). Accepted 11/21/73.
- P. C. Amrein, S. M. Larson, and H. N. Wagner, Jr.
Gamma Camera Collimator Consideration for Imaging ^{125}I . Accepted 11/26/73.
- R. E. McKeigen, G. Muehlechner, and R. A. Moyer
An Unusual Variant in Cerebral Circulation Studies (Case Report). Accepted 11/26/73.
- B. H. Friedman, F. T. A. Lovegrove, and H. N. Wagner, Jr.
Standard Techniques for the Measurement of Red Cell and Plasma Volume (Letter to the Editor). Accepted 11/26/73.
- L. Szur and H. I. Glass
"Clear Plate" Technique for Localization and Orientation in Rectilinear Scanning (Letter to the Editor). Accepted 11/26/73.
- C. S. Yang, R. V. Grieco, and N. F. Bartone
Extrasosseous Tumor Uptake of ^{85}Sr and ^{67}Ga . Accepted 11/26/73.
- E. L. Yeh
Subtraction Technique for the Detection of Subphrenic Abscesses Using ^{67}Ga and ^{99m}Tc (Preliminary Note). Accepted 11/30/73.
- R. M. Beihn, J. R. Damron, and T. Hafner
Rib Abnormality Hidden by Breast Prosthesis (Letter to the Editor). Accepted 11/30/73.
- I. R. McDougall and D. A. Pistenma
Positive Intestinal Scan Caused by Carcinoid Tumor (Case Report). Accepted 11/30/73.
- J. P. Polga, J. Sargent, and P. Dickinson
Nasogastric Suction to Improve Gastrointestinal Scanning (Preliminary Note). Accepted 11/30/73.
- J. P. Polga and P. Dickson
Intrahepatic Focal Lesion in Acute Viral Hepatitis (Case Report). Accepted 11/30/73.
- J. M. Beauchamp, M. A. Belanger, and H. R. Neitzschman
Renal Colloid Localization (Case Report). Accepted 11/30/73.
- R. E. Coleman
Perfusion Studies in the Diagnosis of Cerebral Aneurysms (Case Report). Accepted 11/30/73.
- F. J. DeLand and F. Garcia
Detection of Abscesses with ^{51}Cr -labeled Leukocytes (Letter to the Editor). Accepted 11/30/73.
- W. C. Harvey
Limitations of Orthogonal Tangent Correction (Letter to the Editor). Accepted 11/30/73.
- J. W. Keyes
Section Scanning Using Orthogonal Tangent Correction (Letter to the Editor). Accepted 11/30/73.
- G. D. S. Neill
The Authors' Reply to Letters to the Editor. Accepted 11/30/73.
- D. E. Kuhl and R. Q. Edwards
Bleomycin as a ^{99m}Tc Carrier in Tumor Visualization. Accepted 12/3/73.
- M. S. Lin, D. A. Goodwin, and S. L. Kruse