

## JNM Editors' Choice Awards for 2021

**J**ohannes Czernin, MD, editor-in-chief of *The Journal of Nuclear Medicine (JNM)*, and his associate editors and editorial board announced in April the articles chosen as the most outstanding contributions to the journal appearing in 2021. The *JNM* Editors' Choice Awards are presented in June as part of the SNMMI Annual Meeting. Awarded articles are selected by the associate editors by anonymous vote. "Along with my colleagues on the editorial board, I am pleased to recognize these contributions as outstanding clinical and preclinical research," said Czernin. "Submissions to *JNM* remained strong and of extraordinarily high quality in 2021. Our awardees represent the cutting-edge clinical research activities that are advancing nuclear medicine, molecular imaging, and theranostics to the benefit of patients."

In the category of Best Clinical Article, the award went to Manuel Röhrich, from University Hospital Heidelberg (Germany), and coauthors Patrick Naumann, Frederik L. Giesel, Peter L. Choyke, Fabian Staudinger, Annika Wefers, Dawn P. Liew, Clemens Kratochwil, Hendrik Rathke, Jakob Liermann, Klaus Herfarth, Dirk Jäger, Jürgen Debus, Uwe Haberkorn, Matthias Lang, and Stefan A. Koerber for "Impact of  $^{68}\text{Ga}$ -FAPI PET/CT imaging on the therapeutic management of

primary and recurrent pancreatic ductal adenocarcinomas" (*J Nucl Med.* 2021;62:779–786). This contribution was also named the best overall article in *JNM* for 2021.

Mark G. MacAskill, from the University/BHF Centre for Cardiovascular Science at the University of Edinburgh (UK), and coauthors Agne Stadulyte, Lewis Williams, Timaeus E.F. Morgan, Nikki L. Sloan, Carlos J. Alcaide-Corral, Tashfeen Walton, Catriona Wimberley, Chis-Anne McKenzie, Nick Spath, William Mungall, Ralph BouHaidar, Marc R. Dweck, Gillian A. Gray, David E. Newby, Christophe Lucatelli, Andrew Sutherland, Sally L. Pimlott, and Adriana A.S. Tavares were the recipients of the award for Best Basic Science Article for "Quantification of macrophage-driven inflammation during myocardial infarction with  $^{18}\text{F}$ -LW223, a novel TSPO radiotracer with binding independent of the rs6971 human polymorphism" (*J Nucl Med.* 2021;62:536–544).

"The associate editors and I are grateful for these remarkable contributions," said Czernin. "These and similar efforts ensure that *JNM* remains the journal of choice for publishing clinical, basic, and translational research in nuclear medicine, molecular imaging, radiopharmaceutical therapy, and theranostics."

## Outstanding JNMT Articles for 2021

**K**athy S. Thomas, MHA, CNMT, PET, editor-in-chief of the *Journal of Nuclear Medicine Technology (JNMT)*, and members of the journal's board of editors announced in April the winners of annual awards for outstanding articles. These awards are presented each year to the authors of articles that have contributed significantly to practice, education, and scientific understanding in the field. The first-place Editors' Choice Award for 2021 went to Shannon N. Youngblood from the University of Arkansas for Medical Sciences (Little Rock) and Ochsner Medical Center (Baton Rouge, LA) for "Bullying in the nuclear medicine department and during clinical nuclear medicine education" (*J Nucl Med Technol* 2021;49:156–163). The second-place award was presented to Kyohei Okuda from Tottori University Hospital (Yonago, Japan) and coauthors Daisuke Hasegawa, Takashi Kamiya, Hajime Ichikawa, Takuro Umeda, Takushi Ohkubo, and Kenta Miwa for "Multicenter study of quantitative SPECT: Reproducibility of  $^{99\text{m}}\text{Tc}$  quantitation using a conjugated-gradient minimization reconstruction algorithm" (*J Nucl Med Technol.* 2021;49:138–142).

Pietro Paolo de Barros, from the Federal Institute of Education, Science, and Technology of Santa Catarina-IFSC (Florianópolis, Brazil), and coauthors Tatiane Sabriela Cagol

Camozzato, Tiago Jahn, Flávio Augusto Penna Soares, Letícia Machado da Silva, Jacqueline de Aguiar Soares, and Marco Antonio Neiva Koslosky received the third-place award for "Analysis of radiometry on patients undergoing radioactive iodine therapy" (*J Nucl Med Technol.* 2021;49:75–81).

Julie Bolin from the Nuclear Medicine Technology Program at GateWay Community College (Phoenix, AZ) was the recipient of the award for best continuing education article for "Thyroid follicular epithelial cell-derived cancer: New approaches and treatment strategies" (*J Nucl Med Technol.* 2021;49:199–208). The award for best educators' forum article went George Patchoros and Grace Wenzler from Bronx Community College (NY) for "Satisfying program-level outcomes by integrating primary literature into the online classroom" (*J Nucl Med Technol.* 2021;49:170–174).

"These outstanding articles show not only the diversity and complexity of research and education in our field, they represent extraordinary achievements by frontline care specialists during a very challenging time," said Thomas. "I am especially proud that these award-winning authors address not only technical and practice issues but ethical questions to which we all should be more sensitive. We congratulate this year's awardees and all those whose contributions continue to make *JNMT* a vital resource for our community."

## Putting Patients First: A Year in Review

Richard L. Wahl, MD, SNMMI President

Over the past year, SNMMI has implemented many new initiatives focused on putting the patient first. As SNMMI president, I have worked with our dedicated leadership, volunteers, and staff to develop programs to improve access to care, advocate for appropriate reimbursement, encourage scientific advances, and ensure quality and safety. The resulting achievements will help propel the growth of the field, ultimately benefiting our patients.

Among the goals most important to me in this past year has been to ensure that historically underserved populations, rural and urban, receive equitable imaging and treatment. Appropriate reimbursement is critical to ensuring that patients have access to cutting-edge nuclear medicine and molecular imaging innovations. If a radiopharmaceutical is not adequately reimbursed, providers may not offer procedures that utilize it—which in turn limits patient access.

SNMMI has partnered with the Council on Radionuclides and Radiopharmaceuticals and the Medical Imaging and Technology Alliance to develop and advance major bipartisan legislation, the Facilitating Innovative Nuclear Diagnostics (FIND) Act, which would require Medicare to appropriately reimburse for radiopharmaceuticals. Widespread efforts have been made to promote the legislation, including briefings with key congressional staff and continuing conversations with government agencies, insurance providers, and patient groups to advocate for proper reimbursement. More than 80 groups now support the legislation. To find out more, visit [www.snmmi.org/FindAct](http://www.snmmi.org/FindAct).

In addition to the FIND Act, long-term efforts by the society with the Centers for Medicare and Medicaid Services (CMS) resulted this year in 2 critical wins: coverage of  $^{18}\text{F}$ -FDG PET for infection and inflammation and expansion of CMS coverage for nononcologic PET. Both advances will expand access to critical care for patients.

To further promote access to care, in March SNMMI hosted a successful summit on “Patient Access to and Health Disparities in Nuclear Medicine Procedures.” The meeting gathered representatives from major stakeholders in the nuclear medicine and health equity spaces who identified and addressed barriers that prevent patients from accessing high-quality nuclear medicine scans and therapies.

In the past year, we have seen notable scientific advances in nuclear medicine and molecular imaging that will significantly accelerate growth in the field. The society is raising awareness about new radiopharmaceutical therapies ( $^{177}\text{Lu}$ -PSMA-617 and  $^{177}\text{Lu}$ -DOTATATE, for example) with medical professionals, providing education materials, developing appropriate use criteria, and hosting an annual Therapeutics Conference. The society launched a new Radiopharmaceutical Therapy portal that contains detailed information for nuclear medicine professionals, referring physicians, and patients. SNMMI also launched a consumer media campaign in the fall of 2021 to raise public awareness of

what nuclear medicine is and what it can accomplish, reaching nearly a billion consumers in its first 6 months.

To encourage further advances in research, SNMMI approved the creation of 6 Cancer Cooperative Group Junior Faculty Mentorship Awards last year. These fellows will join the National Cancer Institute’s National Clinical Trials Network cooperative groups in helping to influence, design, and lead trials. In addition, a  $^{177}\text{Lu}$  Dosimetry Challenge was launched in early 2021, followed by a special *JNM* supplement published in December, with the ultimate goal of advancing the practice of personalized dosimetry.

SNMMI recognizes that quality and safety are major concerns of patients and is constantly striving to ensure that patients receive the best care. Earlier in 2022 SNMMI created the Radiopharmaceutical Therapy Center of Excellence program to certify sites that meet strict regulatory, training, qualification, experience, and performance criteria for radiopharmaceutical therapy. The response from clinical sites throughout the country has been strong, with more than 30 applicants and 9 designated sites as of this writing. With this prestigious designation, institutions can assure patients, their families, referring physicians, and payers that rigorous procedures are in place and followed, supporting appropriate patient selection and optimal outcomes from radiopharmaceutical therapy. To gather research on targeted radiopharmaceutical therapies, the SNMMI Board of Directors approved development of the Radiopharmaceutical Therapy Registry in 2021. This registry monitors anonymized data from patients who received radiopharmaceutical therapies.

Growing and sustaining the nuclear medicine and molecular imaging workforce are essential for nuclear medicine and molecular imaging. As part of its Value Initiative, SNMMI created a Workforce Pipeline task force this year to bring young talent into the field. SNMMI is also taking an active role in refining multidisciplinary care pathways and is leading the way in defining the new role of the nuclear oncologist.

Looking toward the future, SNMMI initiated its Mars Shot fund this year to radically transform the nature of disease treatment, prevention, diagnosis, and prognosis using visionary nuclear medicine procedures, radiopharmaceutical therapies, and research projects. By supporting training pathways and fellowships, our hope is to allow nuclear medicine physicians to integrate into patient management teams as key members, rather than remaining as outlying suppliers of imaging and treatment.

We must always remember to put patients first. I remain committed to advancing the field of nuclear medicine and molecular imaging and look forward to the continued growth and fruition of the society’s efforts under the leadership of our incoming SNMMI president, Munir Ghesani, MD.



Richard L. Wahl, MD

# SNMMI Procedure Standard/EANM Practice Guideline for Nuclear Medicine Evaluation and Therapy of Differentiated Thyroid Cancer: Abbreviated Version

Anca M. Avram (cochair)<sup>1</sup>, Luca Giovanella (cochair)<sup>2</sup>, Bennett Greenspan<sup>3</sup>, Susan A. Lawson<sup>4</sup>, Markus Luster<sup>5</sup>, Douglas Van Nostrand<sup>6</sup>, Justin G. Peacock<sup>7</sup>, Petra Petranović Ovčariček<sup>8</sup>, Edward Silberstein<sup>9</sup>, Mark Tulchinsky<sup>10</sup>, Frederik A. Verburg<sup>11</sup>, Alexis Vrachimis<sup>12</sup>

<sup>1</sup>Departments of Radiology and Medicine, MetroHealth Hospital, Case Western Reserve University, Cleveland, OH;

<sup>2</sup>Clinic for Nuclear Medicine and Competence Center for Thyroid Diseases, Imaging Institute of Southern Switzerland, Bellinzona, Switzerland; <sup>3</sup>SNMMI, Reston, VA; <sup>4</sup>Department of Radiology, Division of Nuclear Medicine, University of Michigan; <sup>5</sup>Department of Nuclear Medicine, University Hospital Marburg, Germany; <sup>6</sup>MedStar Health Research Institute and Washington Hospital Center, Georgetown University School of Medicine, Washington, DC; <sup>7</sup>Department of Diagnostic Radiology, Brooke Army Medical Center, JBSA Fort Sam Houston, TX; <sup>8</sup>Department of Oncology and Nuclear Medicine, University Hospital Center "Sestre Milosrdnice", Zagreb, Croatia; <sup>9</sup>University of Cincinnati Medical Center, Cincinnati, OH; <sup>10</sup>Milton S. Hershey Medical Center, Penn State University, Hershey, PA; <sup>11</sup>Department of Radiology & Nuclear Medicine, Erasmus MC, Rotterdam, The Netherlands; and <sup>12</sup>Department of Nuclear Medicine, German Oncology Center, University Hospital of the European University, Limassol, Cyprus

**Editor's note:** SNMMI and the European Association of Nuclear Medicine periodically define new standards/guidelines for nuclear medicine practice to help advance the science of nuclear medicine and to improve the quality of service to patients. Newsline is pleased to publish this somewhat abbreviated version of this most recent guideline with wide relevance to many practitioners and patients. The complete version is available at: <https://www.snmmi.org/ClinicalPractice/content.aspx?ItemNumber=6414> and includes relevant background and important liability statements and acknowledgments.

## I. INTRODUCTION

Differentiated thyroid cancers (DTC) are slow-growing tumors with very low disease-specific mortality rates for local–regional disease (5-y survival: 99.9% for localized disease, 98.3% for regional metastatic disease). However, distant metastatic disease is associated with significantly worse prognosis (5-y survival: 54.9%) (1). Standard-of-care management for DTC includes risk-adapted surgery, postoperative <sup>131</sup>I therapy, and thyroid hormone therapy. In uncommon cases of radioiodine-refractory tumors, additional therapy may include reoperative surgical intervention, external radiotherapy, and interventional radiology for treatment of locoregional metastases and multikinase or tyrosine kinase inhibitors for treatment of distant metastatic disease.

## II. EPIDEMIOLOGY AND CLASSIFICATION

Thyroid neoplasms are the most common endocrine tumors, with an annual incidence of 8–9 cases/100,000 people, with substantial variability between and within populations. DTC accounts for >90% of cases, is more frequent in women, and has excellent specific mortality and prognosis

in most cases. The rising incidence of thyroid cancer observed in the last 30 y is mainly due to detection of small ( $\leq 2$  cm) tumors as a result of increased and improved imaging (2). However, larger tumors ( $>2$  and  $>5$  cm) have also increased in incidence; therefore, a concomitant true rise in thyroid cancer incidence is possible (3). DTC is biologically and functionally heterogeneous, with different molecular pathways impacting cancer cell biology. The BRAF V600E mutation is particularly associated with reduced expression of all thyroid-specific genes involved in iodine metabolism, resulting in variably decreased responsiveness to <sup>131</sup>I therapy (4). For the main clinical and pathologic characteristics of DTC, see Table 1 (5).

## III. DIAGNOSIS

Neck ultrasound (US), serum thyroid-stimulating hormone (TSH), and thyroid scintigraphy are used to select high-risk nodules for fine-needle aspiration (FNA) and filter out low-risk nodules from inappropriate additional procedures. Findings on US that are suspicious for thyroid cancer include hypoechogenicity, solid consistency, microcalcifications, irregular margins, extrathyroidal extension (ETE), and a taller-than-wide shape (6). Sonomorphologic nodule features have been used by several groups to produce a standardized risk assessment for thyroid malignancy, named the Thyroid Imaging Reporting and Data System (TIRADS) (7,8). In the absence of suspicious cervical lymph nodes, FNA is discouraged for nodules  $<1$  cm, and the decision to aspirate larger nodules is guided by the TIRADS score in the context of nodule size. Cytologic findings are classified according to risk of malignancy using the Bethesda System for Reporting Thyroid Cytopathology (9). Certain cytologies are indeterminate, such as follicular neoplasm (or suspicious for follicular neoplasm), and the newly defined noninvasive

**TABLE 1**  
Differentiated Thyroid Cancer: Clinical and Pathologic Characteristics (5)

Histological subtypes	Morphology	Molecular markers	Pattern of spread	RAI avidity
Papillary thyroid cancer (PTC)	Classical papillae Clear nuclei	BRAF V600E, RET/PTC fus	Lymph nodes	+++++
PTC–follicular variant	Follicular structures Clear nuclei	BRAF K601E, RAS, PAX8/ PPAR $\gamma$	Lymph nodes	+++++
PTC–aggressive variants*	Specific cell features and structural changes	BRAF V600E, 1q amp, TERT promoter	Lymph nodes Lung	+++
Follicular thyroid cancer	Capsular invasion (MI) Vascular invasion (WI) Extrathyroidal invasion (WI)	RAS, PAX8/PPAR $\gamma$ , PTEN, TSHR, TERT promoter	Lung Bone	+++++
Hürthle cell thyroid carcinoma	Hürthle cells	RAS, PAX8/PPAR $\gamma$ , PTEN, TSHR, chromosomal loss, mitochondrial DNA mutations, TERT promoter	Lung Bone	++
Poorly differentiated thyroid cancer	Invasion Mitoses >3 Necrosis Convolutated nuclei	RAS, TERT promoter, TP53, PIK3CA, PTEN, CTNNB1, AKT1, EIF1AX, ALK fus	Lymph nodes Lung Bone	+/-
Anaplastic thyroid cancer	Undifferentiated cells with immunohistochemical or ultrastructural features of epithelial origin but of morphological and immunophenotypic markers of thyroid origin	TP53, TERT promoter, PI3K/AKT/mTOR, SWI/SNF subunits, RAS, EIF1AX, BRAF	Local invasion Lung Bone Lymph nodes	-

\*Tall, columnar, solid, and hobnail variants.

RAI = radioiodine; MI = minimally invasive; WI = widely invasive; fus = fusion.

follicular thyroid neoplasm with papillary-like nuclear features. In such cases, FNA can be complemented by assessment of specific molecular alterations (e.g., BRAF or TERT mutations, RET fusions), as well as molecular imaging with <sup>99m</sup>Tc-MIBI or <sup>18</sup>F-FDG (10).

#### IV. THERAPY STRATEGIES

The current strategy for DTC management is a risk-stratified approach based on information from surgical histopathology, molecular markers, postoperative thyroglobulin (Tg) levels, and anatomic/functional imaging studies (6).

##### A. Surgical Treatment for DTC

(Near-) total thyroidectomy was traditionally performed in most DTC patients, with lobectomy reserved for cytologically indeterminate nodules or patients with unifocal micro-papillary thyroid cancer (PTC) <1 cm. Current American Thyroid Association (ATA) guidelines recommend lobectomy for patients with unifocal intrathyroidal low-risk DTC in the absence of additional risk factors (i.e., no clinical evidence of nodal metastases, cN0), although high-level evidence is lacking (6). Management of low-risk DTC between 2 and 4 cm is a topic of debate; although a lobectomy may be proposed, total thyroidectomy is still largely advised, especially in Europe (11). Active surveillance has been recommended

as an alternative to lobectomy for unifocal micro-PTC with no extracapsular extension or lymph node metastases (12). The decision for active surveillance is based primarily on age-related risk of progression, individual surgical risk factors, and patient preference (13). In all other cases, total thyroidectomy remains the preferred surgical approach.

Cervical lymph nodal metastases occur in 20%–60% of patients with DTC, and this nodal involvement varies from clinically relevant macrometastasis to seemingly clinically irrelevant micrometastases (14,15). When lymph nodal metastases are diagnosed preoperatively, central and/or lateral neck compartment dissection reduces the risk of locoregional recurrence. Prophylactic central neck dissection may improve regional control for invasive tumors (T3–T4), but it is discouraged for low-risk DTC, because potentially associated morbidities (i.e., hypoparathyroidism and recurrent laryngeal nerve damage) are not justified by a significant clinical benefit (16). Preoperative neck US generally suffices to plan surgery; however, additional cross-sectional imaging (e.g., contrast-enhanced CT, MRI) is used in locally advanced disease to inform the surgical approach. When iodinated contrast media are administered for preoperative CT, sufficient time (i.e., 4–6 wk) for elimination of iodine load is required before performing radioiodine imaging and therapy.

PET/CT with <sup>18</sup>F-FDG could be performed preoperatively in more aggressive DTC histotypes (i.e., poorly differentiated



thyroid cancer or Hürthle cell carcinoma) and anaplastic thyroid cancer (17). After surgery, the risk of structural disease recurrence and/or persistence is assessed using the 3-tier (low, intermediate, high) stratification recommended by the ATA in 2009 and modified in 2015 (6), whereas the risk of mortality from thyroid cancer is estimated using the American Joint Commission on Cancer/TNM staging system (18).

### B. Postoperative <sup>131</sup>I Therapy

The goal of therapeutic <sup>131</sup>I administration after total thyroidectomy is outlined based on standardized definitions as follows: remnant ablation, adjuvant treatment, or treatment of known disease (19,20). Upon integration of various parameters, including clinical/pathologic data and laboratory and imaging information, <sup>131</sup>I therapy is administered for the following reasons: (1) to eliminate normal thyroid tissue remnant in low-risk patients, thereby ensuring undetectable or minimal serum Tg levels (in the absence of neoplastic tissue), which facilitates follow-up (remnant ablation); (2) to irradiate suspected but unproven sites of neoplastic cells in low-intermediate- and intermediate-risk patients as determined by histopathologic features, thereby reducing the risk of disease recurrence (adjuvant treatment); and (3) to treat persistent or recurrent disease in patients with demonstrated metastatic disease (treatment of known disease).

The impact of <sup>131</sup>I therapy on clinical outcomes of thyroid cancer has been demonstrated in several large data series. An analysis of 2,936 DTC patients in the National Thyroid Cancer Therapy Cooperative Study Group (NTCTCS) reported improved overall survival (OS) and disease-specific survival in patients with advanced tumors and regional and/or distant metastatic disease who received postoperative <sup>131</sup>I therapy (21). An updated analysis of 4,941 patients in the NTCTCS study with a median follow-up of 6 y (longest follow-up, 25 y) confirmed improved OS in stage III and IV patients and also demonstrated improved disease-free survival for stage II patients receiving <sup>131</sup>I therapy (22). A meta-analysis of 31 patient-cohort studies regarding the effectiveness of <sup>131</sup>I therapeutic administration demonstrated a statistically significant effect on improving clinical outcomes at 10 y, with decreased risk for locoregional recurrence (RR, 0.31; CI, 0.2–0.49) and an absolute risk reduction of 3% for distant metastatic disease (23). An analysis of the National Cancer Database comprising 21,870 intermediate-risk patients (mean follow-up, 6 y; longest follow-up, 14 y) demonstrated that adjuvant <sup>131</sup>I treatment improved OS, both for younger (<45 y) and older (≥65 y) subsets of patients. Adjuvant <sup>131</sup>I therapy was associated with a 29% reduction in risk of death for all patients (24). The beneficial effects of postoperative <sup>131</sup>I therapy are most evident in patients with locoregionally advanced and distant metastatic disease (stages IVA, IVB, and IVC). An analysis of the National Cancer Database comprising 11,832 patients demonstrated that administration of <sup>131</sup>I therapy was associated with significantly improved 5- and 10-y survival for both PTC and follicular thyroid cancer (FTC) patients, regardless of

pathologic substage (stages IVA, IVB, or IVC), as follows: mortality rates in the PTC cohort ( $n = 10,796$ ) at 5 and 10 y were 11% and 14%, respectively, in patients who received <sup>131</sup>I therapy, compared to 22.7% and 25.5%, respectively, in patients who received none; mortality rates in the FTC cohort ( $n = 1,036$ ) at 5 and 10 y were 29.2% and 36.8%, respectively, in patients who received <sup>131</sup>I therapy, compared to 45.5% and 51%, respectively, in patients who received none (25). For patients with distant metastases, a delay of >6 mo in administration of <sup>131</sup>I therapy is associated with decreased survival, demonstrated after a follow-up period of only 5–6 y (26).

### C. Preparation for <sup>131</sup>I Therapy

Evaluation with radioiodine scintigraphy and therapy is scheduled at a minimum of 4 wk after surgery, which allows time for patient preparation and for reaching postoperative Tg plateau levels, used as a marker for residual thyroid tissue and/or metastatic thyroid cancer after total thyroidectomy. Tg is synthesized exclusively in the thyroid follicular cells as a precursor of thyroid hormones, and manipulation of the thyroid gland during surgical resection releases significant Tg amounts in the systemic circulation. Tg is subsequently metabolized in the liver with a mean elimination half-life (Tg  $t_{1/2}$ ) of 65.2 h (27). Correct timing of serum sampling for Tg measurement in regard to surgery is important, and measurements should not be performed sooner than 25 d after total thyroidectomy to allow for clearance of the postsurgical Tg peak ( $10 \times \text{Tg } t_{1/2}$ ) (27). Tg levels must always be interpreted in the context of concomitant TSH level (unstimulated vs. stimulated Tg) and type of TSH stimulation (endogenous vs. exogenous) (28). Tg antithyroglobulin antibodies (TgAb) need to be measured in conjunction with Tg in each serum sample provided for Tg testing. Every specimen needs TgAb testing to authenticate that the Tg measurement is not compromised by TgAb interference. When present, TgAb concentrations can be monitored as a surrogate tumor marker (29).

Patient preparation for optimal <sup>131</sup>I uptake by residual thyroid tissue and metastatic disease includes 1–2 wk of low-iodine diet (LID) and adequate TSH stimulation (TSH ≥30 mIU/L measured 1–3 d prior to <sup>131</sup>I administration) by either thyroid hormone withdrawal (THW) or recombinant human TSH (rhTSH) stimulation (30,31). However, a recent article showed that lower TSH levels may be sufficient for remnant ablation without influencing remnant ablation success rates (32). For childbearing females (12–50 y old) a negative pregnancy test is required within 72 h of <sup>131</sup>I administration or prior to the first rhTSH injection (if used), unless the patient is status posthysterectomy or postmenopausal.

Dietary deprivation of stable iodine (<sup>127</sup>I) restricts consumption of iodine to <50 µg/d and is important for minimizing interference with <sup>131</sup>I uptake. In a study of 120 patients (LID group,  $n = 59$ ; control group,  $n = 61$ ) LID preparation decreased 24-h urinary iodine excretion by 83% and increased radioiodine uptake in thyroid remnants by

65% ( $P < 0.001$ ) as compared with controls. The efficacy of  $^{131}\text{I}$  treatment (assessed at 6 mo and defined by absent neck activity and  $\text{Tg} < 2 \text{ ng/mL}$ ) was also improved by LID: successful ablation was achieved in 65% of LID patients compared with 48% of patients in the control group ( $P < 0.001$ ) (33).

Dietary iodine consumption varies widely, depending on ethnic culinary behavior, with reported average iodine intake of 195  $\mu\text{g/d}$  for U.S., 469  $\mu\text{g/d}$  for Korean, and 544  $\mu\text{g/d}$  for Japanese individuals (34–36).

Patient compliance with LID can be confirmed by measurement of spot urinary iodine (U.S. reference range, 26–705  $\mu\text{g/L}$ ) or urinary iodine/creatinine ratio (I/Cr) (U.S. reference range,  $< 584 \mu\text{g/g}$ ); The World Health Organization defines iodine status based on urinary iodine concentrations as insufficient iodine intake,  $< 99 \mu\text{g/L}$ ; adequate iodine intake, 100–199  $\mu\text{g/L}$ ; iodine intake above requirements, 200–299  $\mu\text{g/L}$ ; and excessive iodine intake,  $\geq 300 \mu\text{g/L}$  (37).

In preparation for  $^{131}\text{I}$  therapy the state of iodine deprivation induced by LID is considered adequate when spot urinary iodine is  $< 100 \mu\text{g/L}$  and optimal when urinary iodine is  $< 50 \mu\text{g/L}$  (or I/Cr is  $< 50 \mu\text{g/g}$ ) (38,39). A study of 101 patients comparing 2- and 4-wk LIDs showed no significant difference in urinary iodine levels, both periods resulting in optimal I/Cr for  $^{131}\text{I}$  therapeutic administration (i.e.,  $< 50 \mu\text{g/g}$ ) (40). Moreover, depending on patients' perceived difficulty with dietary iodine deprivation, compliance with

LID may decrease as the duration of the diet is extended. Patients should be informed to avoid dietary supplements with high iodine content (e.g., iodine tablets [Iodoral], spirulina tablets, red dye food colorants). In addition, radiologic contrast agents and iodine-based antiseptics should be avoided for at least 4–6 wk prior to  $^{131}\text{I}$  therapy administration. A medication review should always be performed, and amiodarone usage should be replaced with a different antiarrhythmic drug followed by serial serum/urinary iodine measurements over 3–6 mo after amiodarone discontinuation to ascertain clearance of excessive iodine load before  $^{131}\text{I}$  treatment. Even when urinary iodine levels do not reach optimal values, the use of  $^{131}\text{I}$  therapy should be discussed in cases of advanced thyroid cancer. Table 2 contains dietary information regarding LID preparation (41).

TSH is used for increasing sodium-iodide symporter (NIS) expression and function in metastatic lesions (and residual thyroid tissue), with the goal of increasing the diagnostic (Dx) sensitivity of  $^{131}\text{I}$  scintigraphy and radiation absorbed dose to target lesions. The 2 major approaches for TSH stimulation are:

(1) *Endogenous TSH stimulation*, obtained through thyroid hormone deprivation following total thyroidectomy, thus inducing a hypothyroid state that must be carefully explained to patients in order to avoid major adverse consequences. For example, patients must be informed about precautions regarding driving and/or restrictions on operating

**TABLE 2**  
Specific Dietary Instructions for Preparatory Low-Iodine Diet (Recommended Low-Iodine Diet Prior to Radioiodine Scintigraphy and Therapy [41])\*

Dietary items	Allowed	Restricted
Baked goods, pasta	Flour, oatmeal, wheat, macaroni, noodles, pancakes, spaghetti, homemade bread prepared with noniodized salt	Cereals, rice, granola, popcorn; industrialized biscuits, breads, crackers
Meat, poultry, eggs	Beef, lamb, chicken, turkey, pork, veal; eggs- (max 2 eggs/wk)	All seafood (fish, shrimp, oysters, clams, etc.); processed, cured, smoked, or breaded meats
Condiments	Salt-free margarine, vegetable oil, mayonnaise, sugar, jelly, honey	Iodized salt, pickles, white sauce, meat sauces, creamy sauces, soy sauces, agar-agar, unsalted nuts, vinegar or alginate additives, red colorants
Fruits, juices	All raw fruits and homemade natural juices	Fruit cocktails, canned fruits, dried fruits
Beverages	Water, tea, coffee, wine, alcoholic drinks	Milk and all derivatives (yogurt, ice cream, cheese), soy beverages
Desserts	Homemade cookies, homemade fruit pies, homemade cakes (prepared with noniodized salt)	Chocolate, pudding, gelatin, ice cream, candies, industrialized desserts, foods with red colorants, molasses
Vegetables	Asparagus, beets, broccoli, cabbage, celery, carrots, cauliflower, corn, cucumber, lettuce, mushrooms, onions, peas, potatoes without peel, spinach, sweet potatoes (baked), tomatoes (fresh), zucchini	All canned vegetables, potatoes with peel, french fries, candied sweet potatoes, onion rings, beans
Combination dishes	Homemade dishes prepared with allowed ingredients	Pizza, lasagna, macaroni and cheese, industrialized foods, and foods with conservants

\*All dishes must be prepared with noniodized salt. Avoid eating in restaurants.

heavy machinery, because severe but reversible impairments in attention and reaction time have been observed (42).

The hypothyroid stimulation protocol (THW) has 2 variants employed worldwide in practice (although insufficient evidence is available to prefer one over the other): *Levothyroxine (T4) withdrawal* for 4 wk. This interval is determined by the T4 elimination half-life (T4  $t_{1/2}$ ) of 7 d and the physiologic pituitary response to declining T4 concentrations. An acceptable variation involves repeated measurements of TSH during the second, third, and/or fourth wk of THW to expedite Dx radioiodine whole-body scanning (DxWBS) and/or  $^{131}\text{I}$  therapy whenever possible, timing it to TSH measurement of  $>30\text{ mU/L}$  in cases of metastatic disease (43). A level of unpredictability for scheduling imaging and/or therapeutic  $^{131}\text{I}$  administration is associated with this latter approach. Lower TSH levels may be sufficient for thyroid remnant ablation in low-risk patients, according to a single study that found no influence of TSH levels on postoperative  $^{131}\text{I}$  remnant ablation success (defined as stimulated Tg  $<1\text{ ng/mL}$ ). The study involved 1,873 patients without distant metastases and a majority ( $\sim 80\%$ ) with stage I–II disease (of whom 15% had TSH  $<30\text{ mU/L}$  and demonstrated higher median Tg levels, suggestive of larger volumes of thyroid remnant tissue). Because NIS activity and, consequently,  $^{131}\text{I}$  uptake are TSH mediated in a dose- and time-dependent manner, the area under the curve obtained by the TSH level plotted against time may achieve sufficient stimulation to result in uptake of therapeutically effective  $^{131}\text{I}$  activities for ablation of thyroid tissue remnants that have high-constitutive NIS expression and function (32). However, the Guidelines Committee advises that this study's findings cannot be extrapolated to high-risk patients and/or patients undergoing further  $^{131}\text{I}$  therapy for recurrent, persistent, or metastasized disease.

The second THW variant is *levothyroxine/liothyronine (T4/T3) substitution* for the first 2 wk, followed by discontinuation of T3 for 2 wk. This interval is based on T3  $t_{1/2}$  of 0.75 d. In practice, T4 is stopped and replaced by T3 in a typical dose of 25  $\mu\text{g}$  once or twice daily (depending on age and body weight). This regimen is well tolerated and has the advantage of minimizing hypothyroid symptoms (44).

TSH levels occasionally remain suboptimal for  $^{131}\text{I}$  therapy in patients with large thyroid remnants after surgery, in patients with limited pituitary functional reserve (e.g., history of head trauma, brain external-beam radiation, pituitary surgery, obesity, other comorbidities), or in patients with functional metastatic disease. Correlation of laboratory results with findings on postoperative Dx radioiodine scintigraphy is helpful for determining the etiology of suboptimal TSH elevation. This helps guide further steps in management, such as surgical resection for large thyroid remnants or bulky residual cervical metastatic disease, or dosimetry-guided  $^{131}\text{I}$  therapy for secretory distant metastases. For patients with limited pituitary functional reserve, it is advisable to proceed with administration of exogenous TSH stimulation (rhTSH injections) to avoid further delay in  $^{131}\text{I}$  therapy administration

and limit hypothyroid symptoms (rhTSH augmentation protocol).

(2) For *exogenous TSH stimulation*: The patient continues T4 treatment and undergoes preparation with an LID. TSH elevation is obtained through administration of rhTSH (Thyrogen<sup>®</sup> stimulation protocol): a 0.9-mg rhTSH injection is administered intramuscularly on 2 consecutive d, followed by  $^{131}\text{I}$  therapy administration at 48–72 h (45). When Dx  $^{131}\text{I}$  scanning is performed as an integral part of  $^{131}\text{I}$  therapeutic protocols (theranostics), the tracer  $^{131}\text{I}$  activity is administered after the second rhTSH injection and the WBS scan is obtained 24 h later, followed by subsequent  $^{131}\text{I}$  therapy administration.

The choice of preparation method (THW vs. rhTSH) must be individualized for each patient. The balance of published data show that for normal thyroid tissue (i.e., thyroid remnant ablation), rhTSH and THW stimulation are equivalent, because normal thyroid tissue has constitutive high expression of highly functional NIS and does not require prolonged TSH stimulation for adequate  $^{131}\text{I}$  uptake and retention. However, metastatic thyroid cancer has lower density and poorer functionality of NIS; therefore, TSH elevation over time (area under the curve of TSH stimulation) is important to promote increased  $^{131}\text{I}$  uptake and retention in tumors (46,47). In the setting of metastatic disease, it is possible to use rhTSH stimulation on an off-label basis. However, the combination of THW preparation and dosimetry-guided  $^{131}\text{I}$  therapy is favored when clinically safe and the necessary expertise for dosimetry is available (45,48,49). Tumor vs. critical organ (e.g., bone marrow, lung) radiation absorbed dose (Gy) after rhTSH vs. THW-stimulation protocols needs further evaluation. Furthermore, no studies have yet reported relevant outcome measures (i.e., survival) with rhTSH and THW in patients with distant metastases.

The use of rhTSH is a more complex issue in the setting of adjuvant treatment, because this concept has been introduced only after studies employing rhTSH for remnant ablation were completed. As a result, there are no clear data in the literature allowing us to assess which of the 2 alternatives is better in the setting of adjuvant therapy separately from the setting of remnant ablation, especially with modern criteria for excellent response. However, rhTSH is registered for use for initial postoperative  $^{131}\text{I}$  therapy in patients up to and including N1 M0 disease. Therefore, in the case of adjuvant treatment, rhTSH and THW should both be considered in accordance with the individual medical characteristics of the case, economic feasibility, quality of life, and expected efficacy (20).

#### D. Postoperative Thyroglobulin Measurement

Although postoperative serum Tg measurement can provide valuable information with regard to the likelihood of achieving remission or having persistent or recurrent disease in response to an initial therapy, its predictive value regarding residual disease is significantly influenced by a wide

variety of factors, as follows: the amount of residual thyroid cancer and/or thyroid remnants, TSH level at the time of Tg measurement, functional sensitivity of the Tg assay, time elapsed since total thyroidectomy, Tg cutoff used for analysis, and individual risk of having radioiodine-avid locoregional or distant metastasis (50). The fundamental role of Tg measurement in monitoring of DTC implies the need for high-quality Tg assays. A major problem that hampers accurate Tg measurement is the interference in the Tg assay by Tg antibodies (TgAb) and heterophile antibodies (HAb), resulting in under- or overestimation of the serum Tg concentration (51). Immunometric Tg assays are subject to a high-dose hook effect, leading to inappropriately normal or low Tg values in sera with very high Tg concentrations, which require dilution for accurate measurement (52). Absolute threshold values for Tg, whether the patient is prepared with THW or rhTSH, remain controversial. Several authors proposed that postoperative Tg values of about 10 ng/mL after THW and of 1 ng/mL after rhTSH stimulation achieve the best balance of sensitivity and specificity for predicting recurrent or persistent disease over time and poorer survival (45,53). Notably, because such results were obtained in patients treated with  $^{131}\text{I}$  following thyroidectomy, they cannot be translated to those patients treated by surgery alone and used to decide for/against postsurgical  $^{131}\text{I}$  administration. Indeed, some studies not only excluded patients with TgAb from analysis but also excluded patients showing evidence of extracervical metastases, introducing additional selection bias. Iodine-avid tissue with a corresponding undetectable stimulated serum Tg is detected in up to 20% of DTC patients by posttreatment WBS (PT-WBS). Moreover, up to 6% of such patients had confirmed locoregional or distant metastases in addition to thyroid tissue remnants (54,55). In a retrospective study, Matrone et al. (56) reported on a group of 505 low- to intermediate-risk DTC patients who had undergone total thyroidectomy and rhTSH-aided ablation with 1.1 GBq  $^{131}\text{I}$ . Just before ablation, a neck US was performed and Tg levels on thyroxine were measured using a high sensitive assay (i.e., functional sensitivity of 0.1 ng/mL). A planar PT-WBS was performed and compared with preablation basal Tg and US assessments. Among the main findings, 150 patients had Tg levels  $<0.1$  ng/mL and 1 of 150 showed cervical persistence of disease; 287 patients had Tg levels between 0.1 and 1.0 ng/mL, 15 of whom had nodal or distant metastases; and 68 patients had Tg levels exceeding 1.0 ng/mL, 11 of whom had neck metastases. Notably, in the 3 patients with lung metastases, basal Tg levels were 0.11, 0.12, and 0.94 ng/mL. A basal Tg level of 0.75 ng/mL was measured in 1 additional case of bone metastasis. This article submitted further evidence that basal Tg  $<1$  ng/mL cannot be used to rule out the presence of distant metastases; 2 of the 4 patients with distant metastases had Tg levels of 0.11 and 0.12 ng/mL (56).

Recently, Schlumberger et al. (57) reported 5-y outcomes of ESTIMABL1, a randomized trial comparing 4 strategies of  $^{131}\text{I}$  administration following thyroidectomy in

low-risk thyroid cancer. In this study, the rate of patients with persistent structural disease after  $^{131}\text{I}$  ablation was similar in 3 subgroups of stimulated Tg ranges (i.e.,  $\leq 1$ ,  $>1$ – $\leq 5$ , and  $>5$ – $<10$  ng/mL) (58). In summary, with regard to decision-making on the need for postoperative  $^{131}\text{I}$  administration, it appears that the serum Tg value is more helpful in identifying patients for whom the administered  $^{131}\text{I}$  activity should be higher, rather than in identifying patients who do not require  $^{131}\text{I}$  therapy.

### E. Radioiodine Therapy Planning

An important goal of  $^{131}\text{I}$  therapy is individualized treatment that maximizes benefit and reduces risk for each patient who belongs to a risk category associated with improved outcomes after  $^{131}\text{I}$  therapy. There are 2 approaches to  $^{131}\text{I}$  therapy delivery: the approach integrating functional imaging information obtained with postoperative preablation Dx radioiodine ( $^{123}\text{I}$ ,  $^{131}\text{I}$ , or  $^{124}\text{I}$ ) scans in the management algorithm (i.e., functional imaging-guided approach; theranostics) and the approach based on clinical–pathologic factors and institutional protocols (i.e., risk-adapted approach). The approach chosen depends on local factors, including quality of surgery, availability of and expertise with various imaging modalities, and physician as well as patient preferences.

### F. Management and Integration of Functional Diagnostic Radioiodine Imaging

This theranostic approach to  $^{131}\text{I}$  administration involves acquisition of a postoperative Dx radioiodine ( $^{123}\text{I}$ ,  $^{131}\text{I}$ , or  $^{124}\text{I}$ ) scan for planning  $^{131}\text{I}$  therapy. DxWBS is performed with the intent of identifying and localizing regional and distant metastatic disease and for evaluating the capacity of metastatic deposits to concentrate  $^{131}\text{I}$ . Depending on institutional protocols, findings on DxWBS may alter management, such as providing guidance for additional surgery or altering the prescribed  $^{131}\text{I}$  therapy, either by adjusting empiric  $^{131}\text{I}$  activity or by performing dosimetry calculations for determining the maximum tolerated therapeutic  $^{131}\text{I}$  activity (MTA) for treatment of distant metastatic disease. Also, unnecessary  $^{131}\text{I}$  therapy may be avoided if DxWBS finds no evidence of residual thyroid tissue or metastatic disease and the stimulated Tg is  $<1$  ng/mL in the absence of interfering TgAb (59). Information acquired from DxWBS may also lead to additional functional metabolic imaging with  $^{18}\text{F}$ -FDG PET/CT when non-iodine-avid metastatic disease is suspected (based on Tg elevation out of proportion to findings on DxWBS). Wherever available, it is preferable for postoperative DxWBS to be performed using integrated multimodality imaging (i.e., SPECT/CT).

DxWBS with or without SPECT/CT may detect metastases in normal-size cervical lymph nodes (not appreciated on postoperative neck US), may identify pulmonary micrometastases (which are too small to be detected on routine chest x-ray and may remain undetected on CT), and may diagnose bone metastases at an early stage before cortical disruption is visible on bone x-rays or CT. Because  $^{131}\text{I}$  therapy is most



effective for smaller metastatic deposits, early identification of regional and distant metastases is most important for successful therapy (60,61).

Clinical experience with Dx  $^{123}\text{I}$  scans demonstrated their usefulness in thyroid cancer management: preablation  $^{123}\text{I}$  WBS provided additional critical information in 25% of 122 patients, by revealing unsuspected regional or distant metastases and thus guiding administration of higher  $^{131}\text{I}$  therapeutic activities or revealing unexpected large thyroid remnants (62). In a cohort of 152 consecutive patients referred for postoperative  $^{131}\text{I}$  ablative therapy, the information provided by Dx  $^{123}\text{I}$  WBS led to a change in prescribed therapeutic  $^{131}\text{I}$  activity in 49% of cases compared to the recommended  $^{131}\text{I}$  activities based on surgical pathology alone (63). In a study based on review of 355 Dx radioiodine scans (after administration of 37–148 MBq [1–4 mCi] of either  $^{123}\text{I}$  or  $^{131}\text{I}$ ) the imaging findings altered management in 29% of cases (64). Similar conclusions have been reached by other investigators who demonstrated that the information obtained from Dx  $^{131}\text{I}$  WBS changed the prescribed therapeutic  $^{131}\text{I}$  activity in 58% of cases (65).

A study comparing sensitivity for disease detection for Dx 74–185 MBq (2–5 mCi)  $^{123}\text{I}$  WBS versus 111–185 MBq (3–5 mCi)  $^{131}\text{I}$  WBS (both performed after THW protocol) demonstrated that, although  $^{123}\text{I}$  is adequate for imaging residual thyroid tissue, it appears to be less sensitive than  $^{131}\text{I}$  for imaging thyroid cancer metastases:  $^{123}\text{I}$  missed metastases shown by  $^{131}\text{I}$  in the neck, mediastinum, lungs, and bone. No lesion was better seen with  $^{123}\text{I}$  than with  $^{131}\text{I}$  (66). Other authors also found Dx  $^{123}\text{I}$  WBS to be insensitive for metastatic disease detection and attributed this finding to the short half-life of  $^{123}\text{I}$  (13 h), limiting imaging to no later than 24 h postinjection, which is too short for optimizing tracer tumor uptake (67). In addition to the radioiodine isotope used, the preparation protocol (THW vs. rhTSH stimulation) also has an impact on the Dx sensitivity of DxWBS for disease detection: across 2 phase 3 clinical trials enrolling 358 patients, rhTSH-stimulated DxWBS failed to detect remnant and/or cancer localized to the thyroid bed in 16% of patients in whom it was detected by a DxWBS obtained after THW. In addition, the rhTSH-stimulated DxWBS failed to detect metastatic disease in 24% of patients in whom it was detected by a THW DxWBS (68–70).

In a group of 320 thyroid cancer patients referred for postoperative  $^{131}\text{I}$  therapy, Dx  $^{131}\text{I}$  WBS with SPECT/CT imaging obtained after THW protocol detected regional metastases in 35% of patients and distant metastases in 8% of patients. This information changed staging in 4% of younger and 25% of older patients (71). Both imaging data and stimulated Tg levels acquired at the time of Dx  $^{131}\text{I}$  WBS were consequential for  $^{131}\text{I}$  therapy planning, providing information that changed clinical management in 29% of patients compared to a management strategy based on clinical and surgical pathology information alone (72).

The benefits of integrating Dx  $^{131}\text{I}$  WBS in the management algorithm of intermediate- and high-risk thyroid cancer

for guiding  $^{131}\text{I}$  therapeutic administration have been demonstrated in a group of 350 patients evaluated to assess therapy response with a median follow-up of 3 y after primary treatment strategy (surgery and postoperative  $^{131}\text{I}$  therapy): complete response (CR) to therapy was achieved in 88% patients with locoregional disease and in 42% patients with distant metastases after a single  $^{131}\text{I}$  therapeutic administration (73). Further studies for evaluating long-term outcomes need to be performed.

Depending on the type of patient preparation, Dx radioiodine ( $^{123}\text{I}$  or  $^{131}\text{I}$ ) activities such as 37–74 MBq (1–2 mCi) for THW protocols and 110–148 MBq (3–4 mCi) for rhTSH-stimulation protocols are frequently used (39). The higher tracer activity (3–4 mCi) employed for rhTSH-stimulation protocols is to compensate for the competitive inhibition exerted by the iodine content of T4 (levothyroxine) on the uptake of radioiodine ( $^{131}\text{I}$  or  $^{123}\text{I}$ ) in thyroid tissue or metastatic lesions (74). T4 contains 63.5% iodine by molecular weight. The interference of T4 stable iodine content on radioiodine uptake is not surprising if we consider that the amount of iodine in 1.1 GBq (30 mCi) is only 5  $\mu\text{g}$ , as compared to 50  $\mu\text{g}$  stable iodine content in a daily dose of T4 (75). The dilution of radioiodine with nonradioactive iodine from any source may degrade WBS image quality and reduce the effectiveness of  $^{131}\text{I}$  therapy. Replacement of levothyroxine with liothyronine (T3) during the preparation period for rhTSH-stimulation protocols has been proposed for decreasing the dilution effect of nonradioactive iodine on the uptake of radioiodine (74). T3 has lower iodine content per molecule (only 56.6% of T4 iodine content) and exerts an equivalent biologic effect by administration of  $1/4$  of the necessary T4 dose (76). In addition to an LID, this therapeutic interchange from T4 to T3 during the preparatory period for rhTSH-stimulation protocol resulted in a further decrease in 24-h urinary iodine excretion by 56% as compared to T4 treatment (74).

Optimization of imaging acquisition parameters and current SPECT/CT gamma camera technology permit good quality visualization of distant metastatic disease using 37 MBq (1 mCi)  $^{131}\text{I}$  Dx activity (71,72,77,78).

In all cases,  $^{131}\text{I}$  therapy should be followed by acquisition of PT-WBS to determine therapeutic  $^{131}\text{I}$  localization, which is routinely used to complete postoperative staging. However, the day to perform the PT-WBS after therapeutic  $^{131}\text{I}$  administration remains controversial, ranging from 2–10 d (79). PT-WBS acquisition on 2 separate days may be valuable, as demonstrated by Salvatori et al. (80) in a group of 134 patients who underwent both early (at 3 d) and delayed (at 7 d) scans: 80.5% of detected lesions were concordant on both early and delayed scans; however, 7.5% of lesions were detected only on the early scans, whereas 12% of lesions were detected only on the delayed scans. By performing both early (at 3–6 d) and delayed (at 10–11 d) PT-WBS, Hung et al. (81) reported that 28% of nodal metastases, 17% of lung metastases, and 16% of bone metastases were visible only on the early scans. This is consistent with

the observation that <sup>131</sup>I therapeutic activities produce destructive cellular effects with resultant increased rates of <sup>131</sup>I loss from the tissue; this accelerated tissue <sup>131</sup>I loss after treatment may account for discrepancies reported between DxWBS and delayed PT-WBS in earlier studies, which has been interpreted as “stunning,” as well as differences observed between early and delayed PT-WBS (82). However, delayed PT-WBS acquisition provides the advantage of increased contrast resolution due to time-dependent <sup>131</sup>I clearance from normal tissues. Chong et al. (83) reported in a group of 52 patients that 22% of lung metastases and 33% of bone metastases were visible only on the delayed PT-WBS (obtained at 7 d). Similarly, Kodani et al. (84) reported in a group of 24 patients that 29% of lung metastases and 20% of bone metastases were visible only on the delayed PT-WBS (obtained at 7–9 d).

Hybrid imaging with SPECT/CT improves the accuracy of PT-WBS and should be done whenever possible. A systematic review of 14 original research articles describing the incremental value of <sup>131</sup>I SPECT/CT demonstrated significant clinical benefit in terms of staging, risk stratification, alteration of management, and/or follow-up of DTC (85). This is especially important when DxWBS is not performed or when PT-WBS shows additional foci of activity as compared to DxWBS (86). A high level of concordance between DxWBS and PT-WBS findings has been demonstrated in 2 large single-institution data series from Stanford University (98% concordance in a group of 280 patients) and the University of Michigan (92% concordance in a group of 303 patients) (71,87). In summary, DxWBS is valuable for <sup>131</sup>I therapy planning in the paradigm of thyroid cancer theranostics (88).

DxWBS scintigraphy performed in follow-up evaluation after initial postoperative <sup>131</sup>I administration is important to (1) establish a new baseline after postoperative <sup>131</sup>I therapy (89); (2) determine interval response to <sup>131</sup>I treatment; and (3) assess the patient’s thyroid cancer status. Along with basal and stimulated-Tg testing and cross-sectional anatomic imaging, the results of follow-up DxWBS contribute to dynamic risk re-stratification, which is usually performed at 6–12 mo after initial treatment strategy (surgery and postoperative <sup>131</sup>I therapy). For patients with rising Tg levels, DxWBS and PET/CT evaluation can be scheduled sequentially to assess for recurrent and/or metastatic disease and evaluate tumor biologic behavior for determining whether the patient would benefit from additional <sup>131</sup>I therapy (73). Of

importance, a recent report examining the results of a large Surveillance, Epidemiology, and End Results Program database (28,220 patients diagnosed with DTC between 1998 and 2011) showed that follow-up DxWBS performed after primary treatment of DTC are the only imaging studies associated with improved disease-specific survival, demonstrating the clinical benefit of <sup>131</sup>I theranostics for DTC management (90). Figures 1 and 2 provide sample protocols for integration of DxWBS evaluation, <sup>131</sup>I therapy delivery, and PT-WBS imaging after THW and after rhTSH stimulation, respectively. Figures 3 and 4 present sample protocols for dosimetry-guided radioiodine theranostics after THW and after rhTSH stimulation, respectively.

**G. Risk-Based Management Followed by Posttherapy <sup>131</sup>I Scans with Diagnostic Intent**

The risk-based approach is generally used for thyroid remnant ablation and for adjuvant <sup>131</sup>I treatment. Empiric activity selection is the most commonly used approach in advanced DTC, in which the nuclear medicine physician chooses an activity based on convention, availability, experience with various imaging modalities, and patient-related parameters. With this therapeutic approach patients are most commonly given activities of 1.1 GBq (30 mCi), 1.85 GBq (50 mCi), 3.7GBq (100 mCi), 5.6 GBq (150 mCi), or 7.4 GBq (200 mCi) (91). Although there are theoretical disadvantages of this approach compared to dosimetric strategy in the treat-

Preparation*	Day 1	Day 2–3	Day 3–4	Day 5	Day 6–11 (2–7 d post-Rx)
Thyroid hormone management: <ul style="list-style-type: none"> <li>• Replace T4 with T3 for first 2 wk</li> <li>• Then stop T3 for next 2 wk</li> </ul>	Baseline blood tests: <ul style="list-style-type: none"> <li>• Pregnancy</li> <li>• TSH, Tg, TgAb, F-T4</li> <li>• CMP</li> <li>• CBC w. Diff</li> </ul>	DxWBS: <ul style="list-style-type: none"> <li>• Review/report scan</li> <li>• Review pathology</li> <li>• Review blood test results</li> <li>• <sup>131</sup>I therapy planning</li> </ul>	<sup>131</sup> I therapy administration		PT-WBS scan
Diet management: <ul style="list-style-type: none"> <li>• Start LID for 2 wk (when T3 is stopped)</li> </ul>	Dx RAI adm. (1–2 mCi)	Patient consult: <ul style="list-style-type: none"> <li>• Explain findings, prognosis</li> <li>• Discuss indications for <sup>131</sup>I Rx</li> <li>• Discuss logistics of <sup>131</sup>I Rx</li> <li>• Discuss radiation precautions</li> <li>• Discuss management of post-operative hypothyroidism</li> </ul>			
			<ul style="list-style-type: none"> <li>• Patient education for radiation precautions</li> <li>• Patient signs informed consent and radiation precautions form documenting understanding and adherence to recommendations</li> </ul>	Patient: <ul style="list-style-type: none"> <li>• Starts normal diet</li> <li>• Starts T4 for reversal of hypothyroidism</li> <li>• Continues hydration and lemon candies for salivary protection</li> </ul>	

**FIGURE 1.** Sample protocol for <sup>131</sup>I theranostics after thyroid hormone withdrawal (THW). \*Initial consultation is recommended to discuss preparation protocol with patient and family and explain logistics and expectations of <sup>131</sup>I therapy and radiation precautions. RAI = radioiodine; T4 = levothyroxine; T3 = liothyronine; Dx RAI adm. = diagnostic radioiodine activity administration; DxWBS = diagnostic radioiodine whole-body scan; CMP = comprehensive metabolic panel; CBC = complete blood count; RAI Rx = <sup>131</sup>I therapy; PT-WBS = posttherapy <sup>131</sup>I whole-body scan; rhTSH = recombinant human TSH, Thyrogen®; LID = 2 wk of low-iodine diet; TSH = thyroid-stimulating hormone; F-T4 = free thyroxine; Tg = thyroglobulin.

Preparation*	Day 1	Day 2	Day 3-4	Day 4	Day 5	Days 6-11 (2-7 d post-Rx)
Thyroid hormone management: • Continue T4	Baseline blood tests: • Pregnancy • TSH, Tg, TgAb, F-T4 • CMP • CBC w. Diff	Late afternoon: Dx RAI adm. (3-4 mCi)	rhTSH stim. DxWBS: • Review/report scan • Review pathology • Review blood test results • <sup>131</sup> I therapy planning	<sup>131</sup> I therapy administration		PT-WBS
Diet management: • Start LID for 2 wk	Morning rhTSH injection (0.9 mg IM adm.)	Morning rhTSH injection (0.9 mg IM adm.)	New patient consult: • Explain findings, prognosis • Discuss indications for <sup>131</sup> I Rx • Discuss logistics of <sup>131</sup> I Rx • Discuss radiation precautions • Discuss management of postoperative hypothyroidism	Prior to <sup>131</sup> I therapy administration, obtain blood sample for stimulated Tg.		
				• Patient education for radiation precautions • Patient signs informed consent and radiation precautions form documenting understanding and adherence to recommendations	Patient: • Starts normal diet • Continues hydration and lemon candies for salivary protection	

**FIGURE 2.** Sample protocol for <sup>131</sup>I theranostics after rhTSH-stimulation. \*Initial consultation is recommended to discuss preparation protocol with patient and family and explain logistics and expectations of <sup>131</sup>I therapy and radiation precautions. RAI = radioiodine; T4 = levothyroxine; CMP = comprehensive metabolic panel; CBC = complete blood count; Dx RAI adm. = diagnostic radioiodine activity administration; Dx WBS = diagnostic radioiodine whole-body scan; RAI Rx = <sup>131</sup>I therapy; PT-WBS = posttherapy <sup>131</sup>I whole-body scan; THW = stimulation protocol by thyroid hormone withdrawal; rhTSH = recombinant human TSH; LID = 2 wk of low-iodine diet; TSH = thyroid stimulating hormone; F-T4 = free thyroxine; Tg = thyroglobulin.

Preparation*	Day 1	Day 2	Day 3	Days 4-5	Days 5-6	Days 6-11 (2-7 d post-Rx)
Thyroid hormone management: • Replace T4 with T3 for first 2 wk • Then stop T3 for next 2 wks	Baseline blood tests: • Pregnancy • TSH, Tg, TgAb, F-T4 • CMP • CBC w. Diff	DxWBS (24 h): • Review/report scan • Review pathology • Review blood test results Dosimetry: • 24-h WB counts • 24-h blood counts	DxWBS (48 h)  Dosimetry: • 48-h WB counts • 48-h blood counts	Dosimetry: • 72- ± 96-h WB counts • 72- ± 96-h blood counts • Finalize dosimetry calculations		PT-WBS
Diet management: • Start LID for 2 wk (when T3 is stopped)	RAI Dx adm. (1-2 mCi)	New patient consult: • Explain findings, prognosis • Discuss indications for <sup>131</sup> I Rx • Discuss logistics of <sup>131</sup> I Rx • Discuss radiation precautions • Discuss management of postoperative hypothyroidism		<sup>131</sup> I therapy administration		
	At 1 h post-RAI Dx: • Baseline WB counts • Baseline blood counts			• Patient education for radiation precautions • Patient signs informed consent and radiation precautions form documenting understanding and adherence to recommendations	Patient: • Starts normal diet • Starts T4 for reversal of hypothyroidism • Continues hydration and lemon candies for salivary protection	

**FIGURE 3.** Sample protocol for <sup>131</sup>I theranostics with dosimetry after thyroid hormone withdrawal (THW). \*Initial consultation is recommended to discuss preparation protocol with patient and family and explain logistics and expectations of <sup>131</sup>I therapy and radiation precautions. RAI = radioiodine; T4 = levothyroxine; T3 = liothyronine; CMP = comprehensive metabolic panel; CBC = complete blood count; Dx RAI adm. = diagnostic radioiodine (<sup>123</sup>I, <sup>131</sup>I) activity administration; DxWBS = diagnostic radioiodine whole-body scan; <sup>131</sup>I Rx = <sup>131</sup>I therapy; PT-WBS = posttherapy <sup>131</sup>I whole-body scan; THW = stimulation protocol by thyroid hormone withdrawal; LID = 2 wk of low-iodine diet; TSH = thyroid stimulating hormone; F-T4 = free thyroxine; Tg = thyroglobulin.

ment of locoregional and metastatic disease, no recommendation can be made for the superiority of 1 method of <sup>131</sup>I application over another. However, it is essential to emphasize that the MTA can be exceeded in patients undergoing empiric <sup>131</sup>I therapy escalation for treatment of advanced DTC, which may cause acute dose-related toxicities. Likewise, patients may be undertreated with this conventional therapeutic approach (92). (The full discussion on the limitations of the empiric approach as compared to the dosimetric strategy for treatment of metastatic DTC is available online in the full version of the guideline.)

Administration of empiric <sup>131</sup>I activities of ≤3.7 GBq (≤100 mCi) is generally not recommended for treatment of locoregionally advanced and/or distant metastatic DTC, as these patients require escalation of <sup>131</sup>I therapeutic activity and an individualized treatment approach. Particularly in the setting of diffuse iodine-avid distant metastatic disease, the attending physician or managing medical team should consider either performing dosimetry or referring the patient to a site that performs dosimetry-guided <sup>131</sup>I therapy, for 2 reasons: (1) to identify those patients who would have a higher likelihood of side effects if ≥5.6-7.4 GBq (150-200 mCi) <sup>131</sup>I therapeutic activity is administered; and/or (2) to administer the highest safe <sup>131</sup>I therapeutic activity (MTA) for maximizing tumor radiation absorbed dose. Current evidence suggests that dosimetry-based high-activity <sup>131</sup>I therapy in patients with advanced DTC may be more effective in improving outcomes and survival (93,94).

Each <sup>131</sup>I therapy should be followed by <sup>131</sup>I PT-WBS. Distinct advantages are offered by postsurgery <sup>131</sup>I activity administration for all risk stratification categories and irrespective of postoperative Tg levels, confirming the role of PT-WBS for early detection and treatment of locoregional and distant metastatic disease. Park et al. (55) demonstrated in a large cohort of 824 DTC patients who underwent <sup>131</sup>I therapy after T4 withdrawal protocol that 52 (6.3%) had functioning metastases identified on PT-WBS scans despite stimulated

Preparation* First week	Day 1	Day 2	Day 3	Day 4	Days 5-6
Thyroid hormone management: • Continue T4	Baseline blood tests: • Pregnancy • TSH, Tg, TgAb, F-T4 • CMP • CBC w. Diff	Late afternoon: Dx RAI adm. (2 mCi)	rhTSH stim. DxWBS (24 h): • Review/report scan • Review pathology • Review blood test results Dosimetry: • 24-h WB counts • 24-h blood counts	DxWBS (48 h)  Dosimetry: • 48-h WB counts • 48-h blood counts	Dosimetry: • 72-±96-h WB counts • 72-±96-h blood counts • Finalize dosimetry calculations
Diet management: • Start LID for 2 wk	Morning: • rhTSH injection (0.9 mg IM adm.)	Morning: • rhTSH injection (0.9 mg IM adm.)	New patient consult: • Explain scan findings, prognosis • Discuss indications for <sup>131</sup> I Rx • Discuss logistics of <sup>131</sup> I Rx • Discuss radiation precautions • Discuss management of postoperative hypothyroidism		Obtain blood sample for stimulated Tg
		At 1 h post-RAI Dx: • Baseline WB counts • Baseline blood counts			
Second week	Day 1	Day 2	Day 3	Day 4	Day 5-10
Thyroid hormone management: • Continue T4	Morning: rhTSH injection (0.9 mg IM adm.)	Morning: rhTSH injection (0.9 mg IM adm.)	rhTSH stim. <sup>131</sup> I therapy (based on dosimetry calculations performed in prior week)		Obtain PT-WBS
Diet management: • Continue LID			Patient visit: • Discuss dosimetry results and prescribed <sup>131</sup> I activity • Discuss possible side effects and management strategies • Discuss management of postoperative hypothyroidism • Patient education for radiation precautions • Patient signs informed consent and radiation precautions form documenting understanding and adherence to recommendations	Patient: • Starts normal diet • Continues hydration and lemon candies for salivary protection	

**FIGURE 4.** Sample protocol for <sup>131</sup>I theranostics with dosimetry after rhTSH-stimulation. \*Initial consultation is recommended to discuss preparation protocol with patient and family and explain logistics and expectations of <sup>131</sup>I therapy and radiation precautions. RAI = radioiodine; T4 = levothyroxine; CMP = comprehensive metabolic panel; CBC = complete blood count; Dx RAI adm. = diagnostic radioiodine activity administration; DxWBS = diagnostic radioiodine whole-body scan; RAI Rx = <sup>131</sup>I therapy; PT-WBS = posttherapy <sup>131</sup>I whole-body scan; THW = stimulation protocol by thyroid hormone withdrawal; rhTSH = recombinant human TSH; LID = 2 wk of low-iodine diet; TSH = thyroid stimulating hormone; F-T4 = free thyroxine; Tg = thyroglobulin.

Tg ≤ 2 ng/mL in the absence of interfering anti-Tg antibodies (TgAbs). A low stimulated Tg ≤ 2 ng/mL did not exclude the presence of distant metastases, because in this group 7 patients (13.5%) had pulmonary and osseous metastases, whereas the remaining 45 (86.5%) had cervical/mediastinal lymph nodal metastases. In a recent study by Campenni et al. (95) in 570 low- and low-intermediate-risk DTC patients (pT1–pT3) PT-WBS scans with SPECT/CT demonstrated metastases in 82 patients (14.4%), of whom 73 (90.2%) had postsurgical nonstimulated Tg ≤ 1 ng/mL; furthermore, in 44 patients (54%) stimulated Tg remained ≤ 1 ng/mL, despite the presence of metastases on PT-WBS scans. Therefore, postsurgical nonstimulated Tg levels cannot be used independently in deciding whether to pursue therapeutic <sup>131</sup>I administration, mainly in patients assigned as low-risk based solely on surgical pathology information. The body of published evidence regarding the outcome of postoperative <sup>131</sup>I ablation in low-risk patients (which in current terminology would encompass both remnant

ablation and adjuvant treatment) demonstrates that these patients can be fully reassured by a complete treatment response and would not require Tg stimulation testing or periodic neck US examinations during long-term follow-up (96). In fact, cohorts in which all patients, including those at low risk with nonmetastasized, nonmicrocarcinoma disease, received <sup>131</sup>I therapy after surgery demonstrated that life expectancy is normal for >85% of patients; only patients with stage IV disease at diagnosis have a reduction in life expectancy (97,98). We are not aware of similar data available for individualized or more restrictive <sup>131</sup>I prescription strategies.

In conclusion, postoperative Tg levels are helpful in identifying high-risk patients who require higher <sup>131</sup>I activity but cannot be used for ruling out <sup>131</sup>I therapy. Omission of the procedure exposes the patients to the risk of late diagnosis of residual disease (99,100). Finally, early reassurance and more reliable follow-up are only possible when patients had received total thyroidectomy followed by postoperative <sup>131</sup>I therapy.

## H. Determining the Prescribed Therapeutic <sup>131</sup>I Activity

Current practice guidelines recommend routine <sup>131</sup>I adjuvant therapy for patients with intermediate to high risk of recurrence (although there are some

differences concerning intermediate-risk disease) and avoiding routine <sup>131</sup>I therapy for patients with a small (≤1 cm) intrathyroidal DTC and no evidence of locoregional or distant metastatic spread (6,91). However, <sup>131</sup>I therapy for other low-risk DTC patients (i.e., pT1b–T2) remains controversial. The various iterations of the ATA guidelines advised against the systematic use of <sup>131</sup>I in these patients (6), whereas in 2008 the European Association of Nuclear Medicine (EANM) suggested that <sup>131</sup>I therapy is helpful, citing the lack of prospective data showing that surveillance without ablation is noninferior to <sup>131</sup>I administration (101). Indeed, ATA, EANM, SNMMI, and the European Thyroid Association recently published a joint statement acknowledging the absence of high-quality evidence either for or against the postoperative use of <sup>131</sup>I in low-risk patients (20).

The decision for <sup>131</sup>I therapy and the prescribed <sup>131</sup>I activity depend on the goal of <sup>131</sup>I therapy as determined by estimated risk for persistent/recurrent disease. Table 3 lists

**TABLE 3**  
Suggested Framework for  $^{131}\text{I}$  Therapy

Strategy	Prescribed $^{131}\text{I}$ activity	Clinical/pathologic context
Risk-adapted $^{131}\text{I}$ therapy	1.11–1.85 GBq (30–50 mCi) $^{131}\text{I}$ *	Remnant ablation
Risk-adapted $^{131}\text{I}$ therapy	1.85–3.7 GBq (50–100 mCi) $^{131}\text{I}$ **	Adjuvant treatment
Risk-adapted $^{131}\text{I}$ therapy	3.7–5.6 GBq (100–150 mCi) $^{131}\text{I}$	Treatment of small volume locoregional disease
Risk-adapted $^{131}\text{I}$ therapy	5.6–7.4 GBq (150–200 mCi) $^{131}\text{I}$	Treatment of advanced locoregional disease and/or small volume distant metastatic disease
Whole-body/-blood dosimetry	$\geq 7.4$ GBq ( $\geq 200$ mCi) $^{131}\text{I}$ , maximum tolerable safe $^{131}\text{I}$ activity	Treatment of diffuse distant metastatic disease

\*FDA approved the use of rhTSH in combination with 100 mCi  $^{131}\text{I}$  for remnant ablation in December 2007 (139,140).

\*\*Some committee members recommend up to 5.6 GBq (150 mCi) without extant data regarding the effectiveness and toxicity profiles of 1.85 GBq (100 mCi) vs. 5.6 GBq (150 mCi) for adjuvant treatment. Current guidelines advise that frequency and severity of side effects are activity dependent, specifically, increased xerostomia risk for  $>3.7$ GBq (100 mCi) and sialadenitis risk for  $>5.6$  GBq (150 mCi) (141).

suggested  $^{131}\text{I}$  treatment activities in the context of therapeutic intent:

*Thyroid remnant ablation* in low-risk patients is typically performed with low  $^{131}\text{I}$  activity (e.g., 1.1–1.85 GBq [30–50 mCi]), based on the preponderance of published evidence demonstrating equal effectiveness as compared with higher  $^{131}\text{I}$  activities, with lower rates of adverse events (102–138). The Federal Drug Administration (FDA) approved the use of rhTSH (Thyrogen<sup>®</sup>; Genzyme Corp., Cambridge, MA) in combination with 3.7 GBq (100 mCi)  $^{131}\text{I}$  for remnant ablation in December 2007 (68,139,140).

*Adjuvant  $^{131}\text{I}$  therapy* is performed with 1.85–3.7 GBq (50–100 mCi), with some institutions extending this range to 5.6 GBq (150 mCi); there are no comparison data regarding the effectiveness of 3.7 GBq (100 mCi) vs. 5.6 GBq (150 mCi) for adjuvant treatment, although current guidelines advise that the risk for  $^{131}\text{I}$  toxicity increases with therapeutic activity escalation (141).

*Treatment of known disease* is performed with 3.7–5.6 GBq (100–150 mCi) for small-volume locoregional disease and 5.6–7.4 GBq (150–200 mCi)  $^{131}\text{I}$  for treatment of advanced locoregional disease and/or small-volume distant metastatic disease. Identification of iodine-avid diffuse metastatic disease may lead to escalation of prescribed therapeutic  $^{131}\text{I}$  activity to  $\geq 7.4$  GBq (200 mCi), guided by dosimetry calculations (73,142,143).

A special circumstance is presented by the use of  $^{131}\text{I}$  therapy (3.7 GBq [100 mCi]) for ablation of a remaining thyroid lobe after lobectomy/hemithyroidectomy as an alternative to completion thyroidectomy (144–146). Current guidelines propose lobectomy for patients deemed as at low risk for recurrence; however, if the pathology demonstrates a higher risk tumor, then completion thyroidectomy with resection of the contralateral thyroid lobe is recommended, with the goal of facilitating postoperative  $^{131}\text{I}$  therapy and long-term surveillance. Therapeutic  $^{131}\text{I}$  administration as a substitute for completion thyroidectomy is not recommended routinely (6).

However, it can be used to eliminate the residual thyroid lobe in highly selected cases, such as patients who had experienced complications during initial surgery (e.g., recurrent laryngeal nerve paralysis), for whom completion thyroidectomy is contraindicated due to other comorbidities, or for patients who decline additional surgery. There are limited data regarding the long-term outcomes of this approach. The data suggest similar clinical outcomes, with a slightly higher proportion of patients with persistently detectable Tg. In a randomized controlled equivalence trial of 136 low-risk DTC patients treated with lobectomy, which compared low vs. high  $^{131}\text{I}$  activities in achieving successful ablation of the remaining lobe, the remnant ablation success rate was significantly higher (75% success rate) using 3.7 GBq (100 mCi) as compared with 1.1 GBq (30 mCi) (54% ablation success rate). Mild-to-moderate short-term neck pain was more frequently reported in the high-activity group (66%) than in the low-activity group (51%). Prednisone treatment for neck pain was used more frequently in the high-activity group (36%) than in the low-activity group (147).

### I. Dosimetry-Guided $^{131}\text{I}$ Therapy

There are 2 approaches for individualization of  $^{131}\text{I}$  therapy based on dosimetry calculations: (1) blood or bone marrow dosimetry-based methods, primarily targeting *safety*; and (2) lesion dosimetry-based methods, primarily targeting *efficacy*. Of these, the classic blood-based method is more widely used and permits calculation of the MTA that can be administered to an individual patient without risk of severe hematopoietic toxicity. (The complete online version of the guideline contains a detailed discussion of blood- and lesion-based dosimetry methods.)

### J. Radioiodine Toxicity: Acute and Chronic Side Effects of Radioiodine Therapy and Possible Risk of Subsequent Primary Malignancies

Therapeutic  $^{131}\text{I}$  administration carries a risk for acute and chronic side effects and a small risk of possible



subsequent primary malignancies. (The complete online version of the guideline contains a detailed discussion of these risks.)

### V. THYROID HORMONE THERAPY AND SURVEILLANCE STRATEGY

After <sup>131</sup>I therapy patients receive T4 therapy with the goal of TSH suppression, depending on patients' risk stratification (0.1–0.3 mU/L for patients with regional metastases and <0.1 mU/L for patients with distant metastases) (6). A recent consensus statement by the American, British, and European thyroid associations recommends that T4/T3 therapy should be considered under specific circumstances and for selected patients, especially hypothyroid patients without residual thyroid function and those with persistent symptoms of impaired well-being and cognitive dysfunction despite adequate T4 doses (148).

Serum Tg measurement is employed for monitoring DTC status after primary therapy. However, the usefulness of following Tg is limited in patients who have TgAbs because the serum Tg levels can be underestimated when using immunometric assays (52). In these patients the trend of TgAb levels over time can serve as a surrogate tumor marker (29). Immune memory in patients with a background of thyroid autoimmune disease accounts for the slow decline of TgAb levels after initial DTC treatment, and levels should be interpreted with caution for at least 6 mo after <sup>131</sup>I therapy (51). During long-term surveillance the TSH suppression target is adjusted, taking into consideration the outcome of primary therapy according to dynamic risk re-stratification. In patients with a structural incomplete response serum TSH is maintained <0.1 mIU/L indefinitely, while target values of 0.5–2 and 0.1–0.5 mIU/L are adopted in low- to intermediate-risk and in high-risk patients, respectively, with excellent response. Finally, TSH target values of 0.1–0.5 mIU/L are also suggested when post-therapy Tg remains detectable with evidence of structural disease (6).

### VI. RESPONSE ASSESSMENT AFTER PRIMARY THERAPY

Dynamic risk re-stratification consists of reassignment of recurrence risk based on response to initial treatment, which is predictive of long-term clinical outcomes (6). This is performed during the first 2 y of follow-up after initial therapy (total thyroidectomy followed by <sup>131</sup>I therapy) and involves basal and stimulated Tg testing and imaging reevaluation. US is a reliable method for detection of locoregional persistent or recurrent DTC (i.e., thyroid bed and cervical lymph nodes). However, the probability of false-positive results leading to unnecessary and expensive additional procedures is far from negligible. Accordingly, the use of US should be limited (particularly in low-risk DTC) and, in the absence of TgAbs, reserved only for patients with unstimulated serum Tg levels ≥1 ng/mL (96). US-guided FNA biopsy with Tg

determination in the fluid aspirate is used for Dx confirmation of residual disease in suspicious-appearing cervical lymph nodes identified on anatomic imaging.

In combination with Tg measurement, follow-up DxWBS are helpful for therapy response evaluation and to identify patients with suspected non-iodine-avid metastatic disease (based on elevated basal and/or stimulated Tg and negative WBS), which will prompt further investigation with <sup>18</sup>F-FDG PET/CT and/or Dx CT scan for localizing structural persistent disease (73,149,150).

The combination of Tg, US, and follow-up DxWBS performed at 1–2 y after primary therapy is used to re-stratify the risk of recurrence according to patient response to initial therapy for more accurately predicting long-term clinical outcomes. Risk re-stratification criteria are summarized in Table 4 (6).

In patients with excellent response to therapy the risk of disease recurrence is 1%–4%, which for *intermediate-risk patients* (whose initial risk for recurrence is estimated at 36%–43%) and for *high-risk patients* (whose initial risk for recurrence is estimated at 68%–70%) represents a major change in risk when CR to therapy is achieved. The clinical outcomes in patients with biochemical incomplete response are usually good: ~60% have no evidence of disease over long-term follow-up, 20% continue to have persistently abnormal Tg values without structural correlates, and only 20% develop structurally identifiable disease over 5–10-y follow-up. Patients with biochemical indeterminate response generally do well: in 80%–90% of patients the nonspecific biochemical findings either remain stable or resolve over time with T4 suppression therapy alone; however, up to 20% of these patients will eventually develop functional or structural evidence of disease progression and require additional therapies. Patients with structural incomplete response require multidisciplinary management tailored to their disease status (e.g., regional vs. distant metastases, iodine-avid

TABLE 4

Response to Therapy in DTC Patients: Dynamic Risk Stratification Criteria (Modified from [6])

<b>Excellent response:</b> No clinical, biochemical, or structural evidence of disease: negative imaging and either suppressed Tg <0.2 ng/mL or stimulated Tg <1 ng/mL
<b>Biochemical incomplete response:</b> Abnormal Tg (i.e., suppressed Tg >1 ng/mL or stimulated Tg >10 ng/mL) or rising anti-Tg antibody levels in the absence of localizable disease (i.e., negative imaging)
<b>Structural incomplete response:</b> Persistent or newly identified locoregional or distant metastases (any Tg value)
<b>Indeterminate response:</b> Nonspecific biochemical (i.e., suppressed Tg 0.2–1 ng/mL or stimulated Tg 1–10 ng/mL or stable/declining anti-Tg antibody levels) or structural findings that cannot be confidently classified as either benign or malignant

Tg = thyroglobulin.

vs. non-iodine-avid disease) (6). Depending on the results of such additional treatment patients may be restratified according to the criteria above.

Importantly, dynamic risk restratification has been validated only in patients treated with complete thyroid ablation (i.e., [near-] total thyroidectomy and postoperative  $^{131}\text{I}$  therapy). Evidence is not available for patients treated with lobectomy alone or with thyroidectomy without postoperative  $^{131}\text{I}$  therapy (151). After thyroidectomy, Tg levels are influenced by the amount of thyroid tissue remnant and the TSH level at the time of Tg measurement. Even if decreasing Tg levels may be reassuring, it is difficult to provide general interpretation criteria for serum Tg in such cases. Furthermore, measuring Tg is essentially useless after lobectomy, because Tg levels will not depend on the presence or absence of tumor but rather on the mass of remaining thyroid tissue, current iodine status, and TSH concentration (152). Park et al. (153) followed 208 low-risk PTC patients postlobectomy over a median of 6.9 y. The levels of Tg and Tg/TSH ratio and the proportions of patients in whom serum Tg levels increased by  $\geq 50\%$  or  $\geq 100\%$  over baseline measurement did not differ significantly in patients with or without recurrence (153).

## VII. THERAPY OF ADVANCED DISEASE

Distant metastases develop in about 10% of DTC patients, commonly in lungs and less frequently in bone, brain, liver, and skin, and are the main cause of significant symptoms and death (i.e., overall mortality of 65% at 5 y and 75% at 10 y) (154). Younger patients and those with single-organ metastases and low disease burden have the best outcomes (60). The mainstay of metastatic disease treatment is TSH suppression and repeated courses of  $^{131}\text{I}$  treatment as long as the disease remains iodine-avid (155). About two-thirds of patients have radioiodine-avid distant metastases, and  $>40\%$  of these will achieve remission after  $^{131}\text{I}$  treatments (60). However, a minority of DTC cases lose the ability to concentrate iodine in sufficient quantities to allow therapeutically effective radiation absorbed doses to DTC lesions (i.e., radioiodine-refractory DTC). Determining when a patient will no longer respond to  $^{131}\text{I}$  therapy can be challenging, and all factors impacting the patient's specific clinical situation (such as age, tumor histology, initial stage, radioiodine residual avidity, and  $^{18}\text{F}$ -FDG avidity) should be carefully considered (156). Definitions of radioiodine-refractory DTC have been proposed by several authors (157–160), followed by updated classifications of radioiodine-refractory disease (20,156,161,162). Classification of a patient as radioiodine refractory is very important and consequential. If one classifies a patient as radioiodine refractory when, in fact, the patient may respond to a  $^{131}\text{I}$

therapy, then that patient has lost the potential benefit of an effective  $^{131}\text{I}$  therapy in a situation with limited therapeutic options. However, if patients receive  $^{131}\text{I}$  therapy without benefit, not only may they experience unnecessary side effects from an ineffective therapy, but a potentially beneficial alternative therapy is delayed.

The criterion with the best predictive value that a patient has radioiodine-refractory disease and will not respond to another  $^{131}\text{I}$  treatment is progression after a short time interval after administration of a maximum safe  $^{131}\text{I}$  therapeutic activity. All other criteria have varying degrees of likelihood that the patient is radioiodine refractory and should be cautiously considered, understanding their limitations (161). Although exact likelihood ratios cannot be given here for the various criteria that have been used in the past, Figure 5 presents an example of the spectrum of relatively low-to-high likelihoods of 3 criteria for predicting that a patient's metastatic DTC is radioiodine refractory. Nevertheless, the time from  $^{131}\text{I}$  treatment to progression (i.e., progression-free survival [PFS]) after optimized  $^{131}\text{I}$  treatment is 1 of the most important criteria for predicting radioiodine-refractory DTC. Although in the past disease progression was considered in and of itself indicative of  $^{131}\text{I}$  treatment failure (6), progression must be considered in light of many factors (Table 5), including length of PFS and amount of  $^{131}\text{I}$  activity administered. Caveats guiding classification of a patient's metastatic DTC as radioiodine refractory are also noted in Table 6. Additional management options to be considered prior to classifying a patient's metastatic DTC as radioiodine refractory are presented in Table 7.

Despite a negative DxWBS, administration of  $^{131}\text{I}$  therapy should still be considered for obtaining a PT-WBS, which is more sensitive for detecting metastatic disease with reduced (but not absent)  $^{131}\text{I}$ -concentrating capacity. Although absence of uptake on a PT-WBS is a stronger indicator of radioiodine-refractory disease, it is not a definitive imaging biomarker for tumor NIS expression in the setting of progressive metastatic disease. Several authors have shown that the timing of a PT-WBS scan after therapeutic  $^{131}\text{I}$  administration (e.g., 3–4 d versus 5–7 d) can make the difference in interpretation between a negative and positive PT-WBS (80,81,83,84,163). Additional options to be considered before classifying a

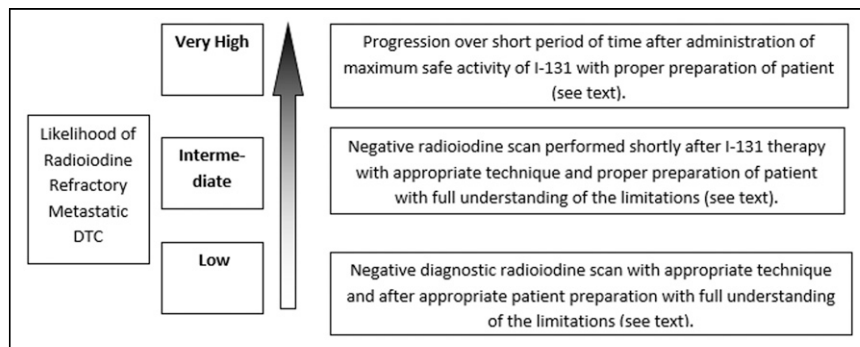


FIGURE 5. Likelihood of radioiodine-refractory differentiated thyroid cancer.

**TABLE 5**

Additional Considerations Before Assignment of Radioiodine-Refractory Disease Status (167)

<ul style="list-style-type: none"> <li>• Appropriate preparation of patient for diagnostic and/or posttherapy RAI scan (39,177)</li> </ul>
<ul style="list-style-type: none"> <li>• Results of the diagnostic scan</li> </ul>
<ul style="list-style-type: none"> <li>• Results of the posttherapy scan</li> </ul>
<ul style="list-style-type: none"> <li>• Response to the last <sup>131</sup>I therapy</li> </ul>
<ul style="list-style-type: none"> <li>• Criteria for progression</li> </ul>
<ul style="list-style-type: none"> <li>• Time to progression</li> </ul>
<ul style="list-style-type: none"> <li>• Activity of <sup>131</sup>I administered for the last <sup>131</sup>I therapy</li> </ul>
<ul style="list-style-type: none"> <li>• Total accumulative activity of <sup>131</sup>I administered</li> </ul>
<ul style="list-style-type: none"> <li>• Objectives of <sup>131</sup>I therapy (e.g., cure, progression-free survival, overall survival, palliation)</li> </ul>
<ul style="list-style-type: none"> <li>• Location and number of metastases. They may be radioiodine avid, but perhaps focal direct therapy (e.g., surgery, XRT, cryotherapy, etc.) may be more effective, warranted, or desired.</li> </ul>
<ul style="list-style-type: none"> <li>• Type, frequency, and severity of side effects of <sup>131</sup>I therapy</li> </ul>
<ul style="list-style-type: none"> <li>• Patient's desires (e.g., patient is a "minimalist" or "maximalist") (200)</li> </ul>

patient's DTC as radioiodine refractory are: (1) refer the patient to a site that performs radioiodine dosimetry and/or frequently manages aggressive and progressive DTC; or (2) help selected patients explore eligibility for participating in a research study offering "resensitizing" or "redifferentiating"

**TABLE 6**

Caveats Regarding Criteria for Radioiodine-Refractory Metastatic Differentiated Thyroid Cancer (Adapted from [167])

<ul style="list-style-type: none"> <li>• The observation that a patient does not demonstrate radioiodine uptake on a diagnostic scan or posttherapy scan does not necessarily mean that the patient's metastatic disease is radioiodine refractory.</li> </ul>
<ul style="list-style-type: none"> <li>• The observation that a patient does demonstrate radioiodine uptake on a diagnostic scan or posttherapy scan does not necessarily mean that the patient's metastatic disease is responsive to a <sup>131</sup>I therapy.</li> </ul>
<ul style="list-style-type: none"> <li>• As the total accumulative activity of administered <sup>131</sup>I increases, the likelihood of a response to a subsequent <sup>131</sup>I therapy decreases. However, no maximum accumulated threshold of administered <sup>131</sup>I activity should designate a patient's metastatic disease as radioiodine refractory.</li> </ul>
<ul style="list-style-type: none"> <li>• One metastatic <i>lesion</i> that is classified as <i>radioiodine refractory</i> does not necessarily mean the <i>patient</i> is now <i>radioiodine refractory</i>. Combination therapy of direct focal therapy (e.g., surgery, external-beam radiotherapy, radiofrequency ablation, cryotherapy, embolization, radioisotope embolization) or/with targeted therapy (e.g., tyrosine kinase inhibitors, BRAF inhibitors, etc.) in combination with <sup>131</sup>I therapy may benefit the patient.</li> </ul>
<ul style="list-style-type: none"> <li>• Progression, in and of itself, is not a criterion that a <sup>131</sup>I therapy has "failed" and that a patient's metastatic disease is "radioiodine refractory." Additional factors, such as duration of progression-free survival and administered activity of <sup>131</sup>I are important.</li> </ul>

**TABLE 7**

Additional Options Prior to Radioiodine Refractory Classification

<ul style="list-style-type: none"> <li>• Consider a "blind" <sup>131</sup>I therapy (see text).</li> </ul>
<ul style="list-style-type: none"> <li>• Refer the patient to a site that performs dosimetry.</li> </ul>
<ul style="list-style-type: none"> <li>• Refer the patient to a site that routinely manages metastatic differentiated thyroid cancer.</li> </ul>
<ul style="list-style-type: none"> <li>• Consider exploring the patient's eligibility for participating in a study that offers "resensitizing" or "redifferentiating" agents to see if radioiodine uptake can be reestablished or increased for a potential <sup>131</sup>I therapy</li> </ul>

agents to determine if radioiodine uptake can be reestablished or increased for a potential <sup>131</sup>I therapy (164–167).

Focally targeted treatment (i.e., resection, vertebroplasty, external-beam radiation therapy, and thermal ablation) can provide local control, provide symptomatic relief, and delay initiation of systemic therapy. These therapies can be used with concurrent <sup>131</sup>I or other systemic therapies when targeting progression in a single lesion and may enable continued overall disease control (168). Treatment with bisphosphonates or denosumab can delay time to skeletal related events (169). However, caution is necessary if using bisphosphonates, as there is a risk for osteonecrosis of the jaw, especially in patients treated with intravenous bisphosphonates. Therefore, it is important to evaluate dental health before initiation of such therapy and avoid dental procedures during the therapy (170). In cases of confirmed systemic progression of radioiodine-refractory disease, intravenous chemotherapy with doxorubicin was traditionally used, but a partial response was obtained only in a small minority of patients. More recently "targeted" therapies, including multikinase inhibitors (MKIs) (e.g., sorafenib and lenvatinib), have been approved for patients with advanced radioiodine-refractory DTC. These drugs have been shown to induce periods of PFS (rarely remission). However, they do not increase cancer-specific survival and may be associated with significant side effects, such as hypertension, diarrhea, hand/foot skin reactions, rash, fatigue, mucositis, loss of appetite, and weight loss (154). It remains unclear which patients will benefit from MKIs in terms of an increase in quality-adjusted life years and optimal time to start therapy, especially in asymptomatic patients. As a rule, molecular-targeted therapies should be started in patients with progression of measurable lesions (as defined radiologically by the Response Evaluation Criteria in Solid Tumors [RECIST]) over the previous 12 mo, taking into consideration tumor burden, disease sites, symptoms, and risk of local complications (171). In the setting of clinical trials involving redifferentiation strategy, molecular tumor analysis can direct therapy (e.g., BRAFV600E + → dabrafenib [± trametinib, vemurafenib; BRAF- → trametinib]). Furthermore, identification of NTRK RET fusion could also direct therapy toward selective inhibitors (e.g., selpercatinib).

The biologic mechanisms implicated in radioiodine refractoriness involve gain-of-function mutations in the MAPK-signaling pathway, resulting in reduced NIS and other iodine-metabolizing gene expression. Experimental data showed that MAPK-signaling pathway inhibition using MEK or BRAF inhibitors may restore radioiodine avidity. Subsequent clinical studies demonstrated that mutation-guided treatment using selective MEK inhibitors (selumetinib, trametinib), BRAF inhibitors (dabrafenib, vemurafenib), or a combination of BRAF inhibitor and MEK inhibitor is feasible and represents a promising strategy to redifferentiate radioiodine-refractory DTC, thereby permitting reapplication of  $^{131}\text{I}$  therapy. Preliminary data obtained on a small clinical series of 13 patients demonstrated restoration of  $^{131}\text{I}$  avidity in 62% of patients who subsequently received  $^{131}\text{I}$  treatment (median activity, 7.6 GBq [204.4 mCi]; range, 5.5–9.4 GBq [150–253 mCi]), resulting in durable disease control (median duration >1 y) while not receiving chronic, expensive MKI therapy (165).  $^{131}\text{I}$  therapy remains the only known cure for metastatic radioiodine-sensitive DTC, and the use of a redifferentiating strategy to permit additional  $^{131}\text{I}$  treatment for patients with radioiodine-refractory metastatic disease represents a promising therapeutic approach while minimizing exposure to kinase inhibitor therapy.

#### A. $^{18}\text{F}$ -FDG PET/CT Imaging for Thyroid Cancer

Advances in molecular Dx imaging and the clinical availability of PET/CT systems produced a paradigm shift in the management of thyroid cancer by allowing characterization of tumor biology based on variable uptake patterns of radioiodine and  $^{18}\text{F}$ -FDG in metastatic lesions. Feine et al. (172,173) described the “flip-flop” phenomenon as opposite radiotracer uptake patterns on radioiodine scintigraphy and  $^{18}\text{F}$ FDG-PET/CT imaging, recognizing 4 patterns of variable radioiodine/FDG uptake in metastatic disease. *Type I* is characterized by negative  $^{131}\text{I}$ /positive FDG uptake and is the most commonly encountered pattern in patients with elevated Tg and negative scintigraphy (i.e., Tg+/scan-), which is found in ~46% cases. *Type II* is characterized by positive  $^{131}\text{I}$ /negative FDG uptake and represents the most favorable context for therapeutic  $^{131}\text{I}$  administration. *Type III* consists of a combination of type I and II patterns recognized in different metastatic lesions within the same patient due to varying biologic behavior in metastatic foci. *Type IV* is characterized by uptake of both  $^{131}\text{I}$  and  $^{18}\text{F}$ FDG within the same metastatic lesions. The flip-flop phenomenon is not a constant for DTC metastases but rather a variable marker of tumor biology. A prospective study of 122 postthyroidectomy patients with established metastatic DTC who were imaged with both DxWBS and  $^{18}\text{F}$ FDG-PET/CT showed a general correlation of FDG avidity with lack of iodine avidity; however, the correlation coefficient was only 0.62. For the selected  $\text{SUV}_{\text{max}}$  cutoff value of 4.0, the authors calculated a sensitivity of 75.3% and specificity of 56.7% for identification of non-iodine-avid metastatic disease (174). Hence, the decision on whether to perform  $^{131}\text{I}$  therapy should not be based on  $^{18}\text{F}$ -FDG

PET/CT alone. The most common application of PET/CT imaging in DTC is for evaluation of patients with elevated Tg and negative DxWBS (i.e., Tg+/scan-) (175).

#### B. Management Algorithm for Patients with Elevated Tg and Negative DxWBS (Tg+/Scan-)

Although this is frequently seen as 1 syndrome (called TENIS syndrome [Tg elevation, negative iodine scintigraphy]), in fact it represents a wide spectrum of clinical situations (discussed in more detail in the online complete version of the guideline).

Devising a treatment plan may be facilitated by following 4 steps:

*Step 1: Rule out false-negative DxWBS and false-positive Tg levels:* To evaluate for false-negative DxWBS, the interpreting physician needs to consider: (1) screening for a history of recent iodine load, such as recent administration of radiologic contrast agents or ingestion of kelp, as well as administration of amiodarone, even months to years earlier; (2) confirming compliance with LID as demonstrated by low urinary iodine levels (e.g., spot urine iodine level, spot urine I/Cr, or 24-h urine iodine collection); (3) ascertaining adequate TSH elevation, which is especially important with preparation by THW; (4) excluding heterophilic antibody interference on Tg measurement (prevalence 0.4%–1%) (176); (5) confirming correct radiopharmaceutical administration (reviewing documents for appropriate isotope and prescribed activity and reviewing the scan images themselves for inappropriate distribution of radioactivity); (6) confirming technical scan parameters (collimator type, peaking of energy window, table speed for planar scan, time interval for stop position for SPECT acquisition, etc). Although one may assume that all radioiodine scans are performed equally, they are not, and assessment of the quality of the scan is important to minimize false-negative radioiodine scans (177).

*Step 2: Perform dynamic risk restratification:* If the patient has a low risk for disease recurrence, active surveillance is appropriate and may include: (1) physical exam; (2) Tg, TgAb, and TSH testing; and (3) US of the thyroid bed and neck. However, nonradioiodine imaging is indicated when the patient has an intermediate or higher risk for disease recurrence. Other factors noted in Table 8 are relevant to consider.

*Step 3: Obtain nonradioiodine imaging:* Nonradioiodine imaging studies for metastatic DTC have been divided into 3 tiers: primary, secondary, and tertiary. The primary tier includes: (1) neck US; (2)  $^{18}\text{F}$ -FDG PET/CT imaging; and/or (3) CT of the neck, chest, abdomen, and pelvis. These studies can be performed sequentially; however, whenever possible, integrated PET/CT imaging is preferable because it provides both functional and anatomic information. The secondary tier includes: (1) brain MRI; (2) bone scanning (using  $^{99\text{m}}\text{Tc}$ -methylene diphosphonate [ $^{99\text{m}}\text{Tc}$ -MDP] or  $^{18}\text{F}$ -sodium fluoride PET/CT [ $^{18}\text{F}$ -NaF PET/CT]); and (3) mitochondrial imaging (e.g.,  $^{99\text{m}}\text{Tc}$ -sestamibi,  $^{201}\text{Tl}$ , or  $^{99\text{m}}\text{Tc}$ -tetrofosmin). These studies should primarily be reserved for patients in whom the

**TABLE 8**

Factors Considered for Management of Elevated Tg and Negative DxWBS (Tg+/Scan-) Patients

• Treatment objectives (i.e., cure, progression-free survival, palliation)
• Time interval since last <sup>131</sup> I treatment
• Amount of <sup>131</sup> I activity administered for most recent treatment
• Response to most recent <sup>131</sup> I treatment (if there has been a previous therapy)
• Total cumulative <sup>131</sup> I therapeutic activity
• Frequency and severity of side effects of prior <sup>131</sup> I therapies
• Is the patient a minimalist or maximalist regarding benefit vs risk of <sup>131</sup> I therapy?
• Comorbidities
• Capabilities of the treating facility

first tier did not reveal metastatic lesions. In the context of advanced DTC, brain MRI is recommended, because patients may have brain metastases in the absence of neurologic signs or symptoms and <sup>18</sup>F-FDG PET is not reliable in the brain due to high brain glucose metabolism. Although DTC osseous metastases are typically osteolytic and highly vascularized, bone metastases can occasionally be detected on <sup>99m</sup>Tc-MDP bone scintigraphy or <sup>18</sup>F-NaF PET/CT when <sup>18</sup>F-FDG PET/CT is negative. Although widespread implementation of <sup>18</sup>F-FDG PET/CT imaging for evaluation of Tg+/scan- patients replaced routine use of mitochondrial imaging, the different uptake mechanisms of <sup>99m</sup>Tc-sestamibi and <sup>18</sup>F-FDG in neoplastic cells provides the rationale for selected use of <sup>99m</sup>Tc-sestamibi in difficult patients with suspected metastatic disease not identified by other conventional imaging modalities (e.g., negative <sup>131</sup>I WBS, US, <sup>18</sup>F-FDG PET/CT, and CT) (79,178). The tertiary tier includes somatostatin receptor (SSR) imaging with radiolabeled somatostatin analogs (e.g., <sup>99m</sup>Tc-depreotide, <sup>99m</sup>Tc-EDDA/HYNIC-Tyr3-octreotide [Tektrotyd], <sup>111</sup>In-octreotide, and <sup>68</sup>Ga-DOTATATE/TOC/NOC). A substantial percentage of aggressive histologic variants of DTC (e.g., Hürthle cell, tall cell, insular variants) associated with locoregionally advanced and/or metastatic DTC exhibit cellular expression of SSR, which can be found independently of glucose transporter overexpression (i.e., in patients with negative <sup>18</sup>F-FDG PET/CT imaging) (79). SSR PET imaging also often provides complementary information in <sup>18</sup>F-FDG+ patients and appears to be especially promising in poorly differentiated and oxyphilic subtypes (i.e., Hürthle cell) metastatic DTC (179,180). Peptide-receptor radionuclide therapy using radiolabeled somatostatin analogues has shown promise for treatment of <sup>131</sup>I-refractory metastatic DTC, with a demonstrated objective response rate of 20%–60% tumor reduction as determined by radiologic measurements (RECIST) (181–183). For the future, some promise is shown in individual cases employing <sup>68</sup>Ga-prostate-specific membrane antigen imaging.

*Step 4: Customize management to the location and number of the metastases:* Once 1 or multiple metastatic sites are

identified, one must decide whether tissue biopsy for histologic examination and mutational profile characterization is needed. Focally directed therapy needs to be considered for management of unifocal or oligometastatic disease (e.g., surgical resection, external-beam radiation therapy, alcohol injection, radiofrequency ablation, cryotherapy, embolization, and/or radioisotope embolization). <sup>131</sup>I therapy should be considered if doubt is still present regarding <sup>131</sup>I refractory status. Systemic and/or combined therapy is recommended for multifocal or widespread metastases.

**C. <sup>18</sup>F-FDG PET/CT Imaging for Prognosis of Metastatic DTC**

Approximately 15%–20% of patients with metastatic DTC and most patients with Hürthle cell thyroid cancer are refractory to radioiodine, and OS for these patients ranges between 2.5 and 4.5 y (60,158,184). The prognosis of metastatic DTC is variable, with 2 distinct phenotypes identified: indolent and aggressive (185,186). Patients with iodine-avid metastatic DTC tend to have more favorable prognoses, with 10-y survival >90%, whereas non-iodine-avid metastatic DTC has a dire 10-y survival of 10% (187). On a molecular level, this is largely driven by genetic patterns, with specific mutations associated with aggressiveness of thyroid cancer disease (188). Two studies demonstrated suboptimal predictive value of staging, including the widely used TNM system (189,190). Tg doubling time (Tg-DT) has been identified as a prognostic factor, with Tg-DT < 1 y portending poor prognosis and Tg-DT > 2 y signifying good prognosis (191). However, Tg-DT cannot be calculated in the presence of TgAbs, which invalidate Tg measurements, and it cannot inform regarding the metabolic phenotype and spatial distribution of metastatic lesions. There is a large variability in survival time for patients with metastatic DTC, ranging from 1 to 30 y (186). The lack of accurate survival estimates for the individual patient has important implications for treatment decisions, especially regarding initiation of targeted MKI therapies (192,193). Due to the toxicity profiles of these medications, current National Comprehensive Cancer Network guidelines advocate active surveillance as standard of care in metastatic disease until evidence of symptomatic or clinically progressive disease as outlined by RECIST (194,195).

<sup>18</sup>F-FDG PET/CT imaging is particularly useful not only for identification and localization of non-iodine-avid metastases but also for predicting the course of disease as aggressive or indolent. <sup>18</sup>F-FDG PET/CT has demonstrated prognostic value for survival in metastatic DTC (196), predicting a survival disadvantage for patients with positive PET compared with those with negative PET results (184,197). Robbins et al. (184) demonstrated that in patients with metastatic DTC a positive <sup>18</sup>F-FDG PET/CT scan result predicted a 7-fold increased risk of mortality compared with patients who had negative FDG scans.

<sup>18</sup>F-FDG PET/CT metabolic parameters can help define the volume and biologic variations of metastatic tumor burden.



Specifically, metabolic tumor volume (MTV) and total glycolytic activity (also referred to as total lesion glycolysis [TLG]) have been proposed as imaging biomarkers for prognosis in human solid tumors (198). Robbins et al. (184) demonstrated that total FDG tumor volume and lesional SUV<sub>max</sub> correlate with survival. Wang et al. (196) noted that an FDG volume >125 mL was associated with worse survival. The metabolic parameters of MTV and TLG obtained with <sup>18</sup>F-FDG PET/CT have been used as surrogate markers for tumor burden and biologic aggressiveness for prognosis of OS and PFS in non-iodine-avid metastatic DTC. Higher-than-median MTV and TLG values were associated with worse OS and PFS, with a median OS of only 3.5 y for patients with radioiodine-refractory metastatic DTC (199). This information can be used to guide more rapid implementation of newer therapeutic agents for radioiodine-refractory metastatic DTC and enrollment in clinical trials.

## VIII. CONCLUSION

DTC is the most common endocrine malignancy, with a rising incidence for the last 30 y. The standard of care for DTC patients is multidisciplinary and involves a risk-stratified approach integrating information from surgical histopathology, genetic markers, postoperative Tg levels, and anatomic/functional imaging studies. Early identification of residual nodal and/or distant metastases is particularly relevant for successful <sup>131</sup>I therapy of metastatic disease, because patients who achieve a CR have considerably higher survival rates than patients with structural incomplete responses. Integration of Dx radioiodine scintigraphy in the management algorithm of patients with thyroid cancer should be considered, and further multidisciplinary collaborative studies to assess patient-relevant outcome measures (disease-specific survival, recurrence rates, and PFS) need to be performed.

## REFERENCES

1. Surveillance, Epidemiology, and End Results Program. Cancer stat facts: Thyroid Cancer. Bethesda, MD: National Cancer Institute; 2021. Available at: <https://seer.cancer.gov/statfacts/html/thyro.html>. Accessed on March 7, 2022.
2. Ahn HS, Kim HJ, Kim KH, et al. Thyroid cancer screening in South Korea increases detection of papillary cancers with no impact on other subtypes or thyroid cancer mortality. *Thyroid*. 2016;26(11):1535–1540.
3. Davies L, Morris LG, Haymart M, et al. American Association of Clinical Endocrinologists and American College of Endocrinology Disease State Clinical Review: The increasing incidence of thyroid cancer. *Endocr Pract*. 2015;21(6):686–696.
4. Gulec SA, Ahuja S, Avram A, et al. A joint statement from the American Thyroid Association, the European Association of Nuclear Medicine, the European Thyroid Association, the Society of Nuclear Medicine and Molecular Imaging on current diagnostic and theranostic approaches in the management of thyroid cancer. *Thyroid*. 2021;31(7):1009–1019.
5. Rossi E, Fadda G. Pathology and immunohistochemistry in thyroid tumors. In: *Atlas of Thyroid and Neuroendocrine Tumor Markers*. Giovanella L, ed. New York, NY: Springer International Publishing; 2018:3–12.
6. Haugen BR, Alexander EK, Bible KC, et al. 2015 American Thyroid Association Management Guidelines for Adult Patients with Thyroid Nodules and Differentiated Thyroid Cancer: The American Thyroid Association Guidelines Task Force on Thyroid Nodules and Differentiated Thyroid Cancer. *Thyroid*. 2016;26(1):1–133.
7. Kwak JY, Han KH, Yoon JH, et al. Thyroid imaging reporting and data system for US features of nodules: A step in establishing better stratification of cancer risk. *Radiology*. 2011;260(3):892–899.
8. Russ G, Bonnema SJ, Erdogan MF, Durante C, Ngu R, Leenhardt L. European Thyroid Association Guidelines for Ultrasound Malignancy Risk Stratification of Thyroid Nodules in Adults: The EU-TIRADS. *Eur Thyroid J*. 2017;6(5):225–237.
9. Cibas ES, Ali SZ. The 2017 Bethesda System for Reporting Thyroid Cytopathology. *Thyroid*. 2017;27(11):1341–1346.
10. Giovanella L, Avram AM, Iakovou I, et al. EANM Practice Guideline/SNMMI Procedure Standard for RAIU and Thyroid Scintigraphy. *Eur J Nucl Med Mol Imaging*. 2019;46(12):2514–2525.
11. Zulewski H, Giovanella L, Bilz S, et al. Multidisciplinary approach for risk-oriented treatment of low-risk papillary thyroid cancer in Switzerland. *Swiss Med Wkly*. 2019;149:w14700.
12. Ito Y, Miyauchi A, Oda H. Low-risk papillary microcarcinoma of the thyroid: A review of active surveillance trials. *Eur J Surg Oncol*. 2018;44(3):307–315.
13. Davies L, Roman BR, Fukushima M, Ito Y, Miyauchi A. Patient experience of thyroid cancer active surveillance in Japan. *JAMA Otolaryngol Head Neck Surg*. 2019;145(4):363–370.
14. Miller JE, Al-Attar NC, Brown OH, et al. Location and causation of residual lymph node metastasis after surgical treatment of regionally advanced differentiated thyroid cancer. *Thyroid*. 2018;28(5):593–600.
15. Roh JL, Park JY, Park CI. Total thyroidectomy plus neck dissection in differentiated papillary thyroid carcinoma patients: pattern of nodal metastasis, morbidity, recurrence, and postoperative levels of serum parathyroid hormone. *Ann Surg*. 2007;245(4):604–610.
16. Barczynski M, Konturek A, Stopa M, Nowak W. Prophylactic central neck dissection for papillary thyroid cancer. *Br J Surg*. 2013;100(3):410–418.
17. Piccardo A, Trimboli P, Foppiani L, et al. PET/CT in thyroid nodule and differentiated thyroid cancer patients. The evidence-based state of the art. *Rev Endocr Metab Disord*. 2019;20(1):47–64.
18. Brierley JD, Gospodarowicz MK, Wittekind C. *TNM Classification of Malignant Tumours*. 8th ed. Oxford, UK: John Wiley & Sons, Ltd; 2017.
19. Van Nostrand D. The benefits and risks of I-131 therapy in patients with well-differentiated thyroid cancer. *Thyroid*. 2009;19(12):1381–1391.
20. Tuttle RM, Ahuja S, Avram AM, et al. Controversies, consensus, and collaboration in the use of <sup>131</sup>I therapy in differentiated thyroid cancer: A joint statement from the American Thyroid Association, the European Association of Nuclear Medicine, the Society of Nuclear Medicine and Molecular Imaging, and the European Thyroid Association. *Thyroid*. 2019;29(4):461–470.
21. Jonklaas J, Sarlis NJ, Litofsky D, et al. Outcomes of patients with differentiated thyroid carcinoma following initial therapy. *Thyroid*. 2006;16(12):1229–1242.
22. Carhill AA, Litofsky DR, Ross DS, et al. Long-term outcomes following therapy in differentiated thyroid carcinoma: NTCTCS registry analysis 1987–2012. *J Clin Endocrinol Metab*. 2015;100(9):3270–3279.
23. Sawka AM, Thepamongkhon K, Brouwers M, Thabane L, Browman G, Gerstein HC. Clinical review 170: A systematic review and metaanalysis of the effectiveness of radioactive iodine remnant ablation for well-differentiated thyroid cancer. *J Clin Endocrinol Metab*. 2004;89(8):3668–3676.
24. Ruel E, Thomas S, Dinan M, Perkins JM, Roman SA, Sosa JA. Adjuvant radioactive iodine therapy is associated with improved survival for patients with intermediate-risk papillary thyroid cancer. *J Clin Endocrinol Metab*. 2015;100(4):1529–1536.
25. Yang Z, Flores J, Katz S, Nathan CA, Mehta V. Comparison of survival outcomes following postsurgical radioactive iodine versus external beam radiation in stage IV differentiated thyroid carcinoma. *Thyroid*. 2017;27(7):944–952.
26. Higashi T, Nishii R, Yamada S, et al. Delayed initial radioactive iodine therapy resulted in poor survival in patients with metastatic differentiated thyroid carcinoma: a retrospective statistical analysis of 198 cases. *J Nucl Med*. 2011;52(5):683–689.
27. Hocevar M, Auersperg M, Stanovnik L. The dynamics of serum thyroglobulin elimination from the body after thyroid surgery. *Eur J Surg Oncol*. 1997;23(3):208–210.
28. Mazzaferri EL, Kloos RT. Clinical review 128: Current approaches to primary therapy for papillary and follicular thyroid cancer. *J Clin Endocrinol Metab*. 2001;86(4):1447–1463.
29. Spencer CA. Clinical review: Clinical utility of thyroglobulin antibody (TgAb) measurements for patients with differentiated thyroid cancers (DTC). *J Clin Endocrinol Metab*. 2011;96(12):3615–3627.
30. Xiao J, Yun C, Cao J, et al. A pre-ablative thyroid-stimulating hormone with 30–70 mIU/L achieves better response to initial radioiodine remnant ablation in differentiated thyroid carcinoma patients. *Sci Rep*. 2021;11(1):1348.
31. Lawal IO, Nyakale NE, Harry LM, et al. Higher preablative serum thyroid-stimulating hormone level predicts radioiodine ablation effectiveness in patients with differentiated thyroid carcinoma. *Nucl Med Commun*. 2017;38(3):222–227.
32. Vrachimis A, Riemann B, Mader U, Reiners C, Verburg FA. Endogenous TSH levels at the time of <sup>131</sup>I ablation do not influence ablation success, recurrence-free

- survival or differentiated thyroid cancer-related mortality. *Eur J Nucl Med Mol Imaging*. 2016;43(2):224–231.
33. Pluijimen MJ, Eustatia-Rutten C, Goslings BM, et al. Effects of low-iodide diet on postsurgical radioiodide ablation therapy in patients with differentiated thyroid carcinoma. *Clin Endocrinol (Oxf)*. 2003;58(4):428–435.
  34. Kim JY, Kim KR. Dietary iodine intake and urinary iodine excretion in patients with thyroid diseases. *Yonsei Med J*. 2000;41(1):22–28.
  35. Lakshmanan M, Schaffer A, Robbins J, Reynolds J, Norton J. A simplified low iodine diet in I-131 scanning and therapy of thyroid cancer. *Clin Nucl Med*. 1988;13(12):866–868.
  36. Katamine S, Mamiya Y, Sekimoto K, et al. Iodine content of various meals currently consumed by urban Japanese. *J Nutr Sci Vitaminol (Tokyo)*. 1986;32(5):487–495.
  37. World Health Organization. *Urinary Iodine Concentrations for Determining Iodine Status in Populations*. Vitamin and Mineral Nutrition Information System. Technical Report. Geneva, Switzerland: World Health Organization; 2013.
  38. Sohn SY, Choi JY, Jang HW, et al. Association between excessive urinary iodine excretion and failure of radioactive iodine thyroid ablation in patients with papillary thyroid cancer. *Thyroid*. 2013;23(6):741–747.
  39. Bartel Chair TB, Magereftch S, Avram AM, et al. SNMMI Procedure Standard for Scintigraphy for Differentiated Thyroid Cancer. *J Nucl Med Technol*. 2020;48(3):202–209.
  40. Lim CY, Kim JY, Yoon MJ, Chang HS, Park CS, Chung WY. Effect of a low iodine diet vs. restricted iodine diet on postsurgical preparation for radioiodine ablation therapy in thyroid carcinoma patients. *Yonsei Med J*. 2015;56(4):1021–1027.
  41. ThyCa: Thyroid Cancer Survivors' Association. *Low-Iodine Cookbook*. 9th ed. Olney, MD: ThyCa: Thyroid Cancer Survivors' Association; 2020. Available from: <https://www.thyca.org/download/document/231/Cookbook>. Accessed on March 11, 2022.
  42. Smith CD, Grondin R, LeMaster W, Martin B, Gold BT, Ain KB. Reversible cognitive, motor, and driving impairments in severe hypothyroidism. *Thyroid*. 2015;25(1):28–36.
  43. Grigsby PW, Siegel BA, Bekker S, Clutter WE, Moley JF. Preparation of patients with thyroid cancer for <sup>131</sup>I scintigraphy or therapy by 1–3 weeks of thyroxine discontinuation. *J Nucl Med*. 2004;45(4):567–570.
  44. Van Nostrand D WL, Bloom G, Kulkarni KP, eds. *Thyroid Cancer: A Guide for Patients*. Toledo, OH: Keystone Press; 2010.
  45. Giovannella L, Duntas LH. Management of endocrine disease: The role of rhTSH in the management of differentiated thyroid cancer: Pros and cons. *Eur J Endocrinol*. 2019;181(4):R133–R145.
  46. Potzi C, Moameni A, Karanikas G, et al. Comparison of iodine uptake in tumour and nontumour tissue under thyroid hormone deprivation and with recombinant human thyrotropin in thyroid cancer patients. *Clin Endocrinol (Oxf)*. 2006;65(4):519–523.
  47. Freudenberg LS, Jentzen W, Petrich T, et al. Lesion dose in differentiated thyroid carcinoma metastases after rhTSH or thyroid hormone withdrawal: <sup>124</sup>I PET/CT dosimetric comparisons. *Eur J Nucl Med Mol Imaging*. 2010;37(12):2267–2276.
  48. Zanotti-Fregonara P, Hindie E. On the effectiveness of recombinant human TSH as a stimulating agent for <sup>131</sup>I treatment of metastatic differentiated thyroid cancer. *Eur J Nucl Med Mol Imaging*. 2010;37(12):2264–2266.
  49. Plyku D, Hobbs RF, Huang K, et al. Recombinant human thyroid-stimulating hormone versus thyroid hormone withdrawal in <sup>124</sup>I PET/CT-based dosimetry for <sup>131</sup>I therapy of metastatic differentiated thyroid cancer. *J Nucl Med*. 2017;58(7):1146–1154.
  50. Clerc J, Verburg FA, Avram AM, Giovannella L, Hindie E, Taieb D. Radioiodine treatment after surgery for differentiated thyroid cancer: a reasonable option. *Eur J Nucl Med Mol Imaging*. 2017;44(6):918–925.
  51. Verburg FA, Luster M, Cupini C, et al. Implications of thyroglobulin antibody positivity in patients with differentiated thyroid cancer: A clinical position statement. *Thyroid*. 2013;23(10):1211–1225.
  52. Giovannella L, Feldt-Rasmussen U, Verburg FA, Grebe SK, Plebani M, Clark PM. Thyroglobulin measurement by highly sensitive assays: focus on laboratory challenges. *Clin Chem Lab Med*. 2015;53(9):1301–1314.
  53. Campenni A, Ruggeri RM, Siracusa M, et al. Early preablation rhTSH-stimulated thyroglobulin predicts outcome of differentiated thyroid cancer (DTC) patients. *Eur J Nucl Med Mol Imaging*. 2021;48(8):2466–2475.
  54. Giovannella L, Suriano S, Ceriani L, Verburg FA. Undetectable thyroglobulin in patients with differentiated thyroid carcinoma and residual radioiodine uptake on a postablation whole-body scan. *Clin Nucl Med*. 2011;36(2):109–112.
  55. Park EK, Chung JK, Lim IH, et al. Recurrent/metastatic thyroid carcinomas false negative for serum thyroglobulin but positive by posttherapy I-131 whole body scans. *Eur J Nucl Med Mol Imaging*. 2009;36(2):172–179.
  56. Matrone A, Gambale C, Piaggi P, et al. Postoperative thyroglobulin and neck ultrasound in the risk re-stratification and decision to perform <sup>131</sup>I ablation. *J Clin Endocrinol Metab*. 2017;102(3):893–902.
  57. Schlumberger M, Leboulleux S, Catargi B, et al. Outcome after ablation in patients with low-risk thyroid cancer (ESTIMABL1): 5-year follow-up results of a randomised, phase 3, equivalence trial. *Lancet Diabetes Endocrinol*. 2018;6(8):618–626.
  58. Hindie E, Taieb D, Avram AM, Giovannella L. Radioactive iodine ablation in low-risk thyroid cancer. *Lancet Diabetes Endocrinol*. 2018;6(9):686.
  59. Van Nostrand D, Atkins F, Moreau S, et al. Utility of the radioiodine whole-body retention at 48 hours for modifying empiric activity of I-131-iodine for the treatment of metastatic well-differentiated thyroid carcinoma. *Thyroid*. 2009;19(10):1093–1098.
  60. Durante C, Haddy N, Baudin E, et al. Long-term outcome of 444 patients with distant metastases from papillary and follicular thyroid carcinoma: benefits and limits of radioiodine therapy. *J Clin Endocrinol Metab*. 2006;91(8):2892–2899.
  61. Schmidt D, Linke R, Uder M, Kuwert T. Five months' follow-up of patients with and without iodine-positive lymph node metastases of thyroid carcinoma as disclosed by <sup>131</sup>I-SPECT/CT at the first radioablation. *Eur J Nucl Med Mol Imaging*. 2010;37(4):699–705.
  62. Chen MK, Yasrebi M, Samii J, Staib LH, Doddamani I, Cheng DW. The utility of I-123 pretherapy scan in I-131 radioiodine therapy for thyroid cancer. *Thyroid*. 2012;22(3):304–309.
  63. Song H, Mosci C, Akatsu H, Basina M, Dosiou C, Iagaru A. Diagnostic <sup>123</sup>I whole body scan prior to ablation of thyroid remnant in patients with papillary thyroid cancer: Implications for clinical management. *Clin Nucl Med*. 2018;43(10):705–709.
  64. Van Nostrand D, Aiken M, Atkins F, et al. The utility of radioiodine scans prior to iodine I-131 ablation in patients with well-differentiated thyroid cancer. *Thyroid*. 2009;19(8):849–855.
  65. Wong KK, Sisson JC, Koral KF, Frey KA, Avram AM. Staging of differentiated thyroid carcinoma using diagnostic <sup>131</sup>I SPECT/CT. *AJR Am J Roentgenol*. 2010;195(3):730–736.
  66. Sarkar SD, Kalappambath TP, Palestro CJ. Comparison of <sup>123</sup>I and <sup>131</sup>I for whole-body imaging in thyroid cancer. *J Nucl Med*. 2002;43(5):632–634.
  67. Choe M DG, Spies W, Savas H. A comparison between TSH stimulated diagnostic I-123 and post-therapy I-131 scans in the detection of remnant, loco-regional and distant functioning metastatic disease. Presented at the SNMMI Meeting Mid-Winter Meeting; Orlando, FL, 2018.
  68. Genzyme. Thyrogen [package insert]. Cambridge, MA: Genzyme; 2008.
  69. Ladenson PW, Braverman LE, Mazzaferri EL, et al. Comparison of administration of recombinant human thyrotropin with withdrawal of thyroid hormone for radioactive iodine scanning in patients with thyroid carcinoma. *N Engl J Med*. 1997;337(13):888–896.
  70. Haugen BR, Pacini F, Reiners C, et al. A comparison of recombinant human thyrotropin and thyroid hormone withdrawal for the detection of thyroid remnant or cancer. *J Clin Endocrinol Metab*. 1999;84(11):3877–3885.
  71. Avram AM, Fig LM, Frey KA, Gross MD, Wong KK. Preablation I-131 scans with SPECT/CT in postoperative thyroid cancer patients: what is the impact on staging? *J Clin Endocrinol Metab*. 2013;98(3):1163–1171.
  72. Avram AM, Esfandiari NH, Wong KK. Preablation I-131 scans with SPECT/CT contribute to thyroid cancer risk stratification and I-131 therapy planning. *J Clin Endocrinol Metab*. 2015;100(5):1895–1902.
  73. Avram AM, Rosculet N, Esfandiari NH, et al. Differentiated thyroid cancer outcomes after surgery and activity-adjusted <sup>131</sup>I theragnostics. *Clin Nucl Med*. 2019;44(1):11–20.
  74. Klein HA. Radioiodine dilution due to levothyroxine when using recombinant human thyroid-stimulating hormone: case report and discussion. *Clin Nucl Med*. 2011;36(10):899–903.
  75. Barbaro D, Boni G, Meucci G, et al. Radioiodine treatment with 30mCi after recombinant human thyrotropin stimulation in thyroid cancer: effectiveness for postsurgical remnants ablation and possible role of iodine content in L-thyroxine in the outcome of ablation. *J Clin Endocrinol Metab*. 2003;88(9):4110–4115.
  76. King Pharmaceuticals, Inc. Cytome [package insert]. Bristol, TN: King Pharmaceuticals, Inc.; 2004.
  77. Sisson JC, Dewaraja YK, Wizauer EJ, Giordano TJ, Avram AM. Thyroid carcinoma metastasis to skull with infringement of brain: treatment with radioiodine. *Thyroid*. 2009;19(3):29–303.
  78. Wong KK, Zarzhevsky N, Cahill JM, Frey KA, Avram AM. Incremental value of diagnostic <sup>131</sup>I SPECT/CT fusion imaging in the evaluation of differentiated thyroid carcinoma. *AJR Am J Roentgenol*. 2008;191(6):1785–1794.
  79. Donohoe KJ, Aloff J, Avram AM, et al. Appropriate use criteria for nuclear medicine in the evaluation and treatment of differentiated thyroid cancer. *J Nucl Med*. 2020;61(3):375–396.
  80. Salvatori M, Perotti G, Villani MF, et al. Determining the appropriate time of execution of an I-131 post-therapy whole-body scan: comparison between early and late imaging. *Nucl Med Commun*. 2013;34(9):900–908.

81. Hung BT, Huang SH, Huang YE, Wang PW. Appropriate time for post-therapeutic I-131 whole body scan. *Clin Nucl Med*. 2009;34(6):339–342.
82. Sisson JC, Avram AM, Lawson SA, Gauger PG, Doherty GM. The so-called stunning of thyroid tissue. *J Nucl Med*. 2006;47(9):1406–1412.
83. Chong A, Song HC, Min JJ, et al. Improved detection of lung or bone metastases with an I-131 whole body scan on the 7th day after high-dose I-131 therapy in patients with thyroid cancer. *Nucl Med Mol Imaging*. 2010;44(4):273–281.
84. Kodani N, Okuyama C, Aibe N, Matsushima S, Yamazaki H. Utility of additional delayed post-therapeutic <sup>131</sup>I whole-body scanning in patients with thyroid cancer. *Clin Nucl Med*. 2012;37(3):264–267.
85. Xue YL, Qiu ZL, Song HJ, Luo QY. Value of <sup>131</sup>I SPECT/CT for the evaluation of differentiated thyroid cancer: a systematic review of the literature. *Eur J Nucl Med Mol Imaging*. 2013;40(5):768–778.
86. Schmidt D, Szikszai A, Linke R, Bautz W, Kuwert T. Impact of <sup>131</sup>I SPECT/spiral CT on nodal staging of differentiated thyroid carcinoma at the first radioablation. *J Nucl Med*. 2009;50(1):18–23.
87. McDougall IR. 74 MBq radioiodine <sup>131</sup>I does not prevent uptake of therapeutic doses of <sup>131</sup>I (i.e. it does not cause stunning) in differentiated thyroid cancer. *Nucl Med Commun*. 1997;18(6):505–512.
88. Avram AM, Dewaraja YK. Thyroid cancer radiotheragnostics: The case for activity adjusted <sup>131</sup>I therapy. *Clin Transl Imaging*. 2018;6(5):335–346.
89. Van Nostrand D. Surveillance radioiodine whole body scans. In: Wartofsky L, Van Nostrand D, eds. *Thyroid Cancer: A Comprehensive Guide to Clinical Management*, 3rd ed. New York, NY: Springer; 2016:471–474.
90. Banerjee M, Wiebel JL, Guo C, Gay B, Haymart MR. Use of imaging tests after primary treatment of thyroid cancer in the United States: Population based retrospective cohort study evaluating death and recurrence. *BMJ*. 2016;354:i3839.
91. Luster M, Clarke SE, Dietlein M, et al. Guidelines for radioiodine therapy of differentiated thyroid cancer. *Eur J Nucl Med Mol Imaging*. 2008;35(10):1941–1959.
92. Freudenberg LS, Jentzen W, Gorges R, et al. <sup>124</sup>I-PET dosimetry in advanced differentiated thyroid cancer: Therapeutic impact. *Nuklearmedizin*. 2007;46(4):121–128.
93. Jentzen W, Nahum AE, Bockisch A, Binse I, Tulchinsky M. Fixed 3.7-GBq <sup>131</sup>I activity for metastatic thyroid cancer therapy ignores science and history. *J Nucl Med*. 2017;58(9):1530.
94. Verburg FA, Luster M, Giovanella L, et al. The “reset button” revisited: Why high activity <sup>131</sup>I therapy of advanced differentiated thyroid cancer after dosimetry is advantageous for patients. *Eur J Nucl Med Mol Imaging*. 2017;44(6):915–917.
95. Campenni A, Giovanella L, Pignata SA, et al. Undetectable or low (<1 ng/ml) post-surgical thyroglobulin values do not rule out metastases in early stage differentiated thyroid cancer patients. *Oncotarget*. 2018;9(25):17491–17500.
96. Verburg FA, Mader U, Giovanella L, Luster M, Reiners C. Low or undetectable basal thyroglobulin levels obviate the need for neck ultrasound in differentiated thyroid cancer patients after total thyroidectomy and <sup>131</sup>I ablation. *Thyroid*. 2018;28(6):722–728.
97. Maier TM, Schober O, Gersch J, et al. Differentiated thyroid cancer patients more than 60 years old paradoxically show an increased life expectancy. *J Nucl Med*. 2015;56(2):190–195.
98. Verburg FA, Mader U, Reiners C, Hanscheid H. Long-term survival in differentiated thyroid cancer is worse after low-activity initial post-surgical <sup>131</sup>I therapy in both high- and low-risk patients. *J Clin Endocrinol Metab*. 2014;99(12):4487–4496.
99. Hindie E, Zanotti-Fregonara P, Keller I, et al. Bone metastases of differentiated thyroid cancer: Impact of early <sup>131</sup>I-based detection on outcome. *Endocr Relat Cancer*. 2007;14(3):799–807.
100. Albano D, Bertagna F, Bonacina M, et al. Possible delayed diagnosis and treatment of metastatic differentiated thyroid cancer by adopting the 2015 ATA guidelines. *Eur J Endocrinol*. 2018;179(3):143–151.
101. Verburg FA, Aktolun C, Chiti A, et al. Why the European Association of Nuclear Medicine has declined to endorse the 2015 American Thyroid Association management guidelines for adult patients with thyroid nodules and differentiated thyroid cancer. *Eur J Nucl Med Mol Imaging*. 2016;43(6):1001–1005.
102. McCowen KD, Adler RA, Ghaed N, Verdon T, Hofeldt FD. Low dose radioiodine thyroid ablation in postsurgical patients with thyroid cancer. *Am J Med*. 1976;61(1):52–58.
103. Johansen K, Woodhouse NJ, Odugbesan O. Comparison of 1073 MBq and 3700 MBq iodine-131 in postoperative ablation of residual thyroid tissue in patients with differentiated thyroid cancer. *J Nucl Med*. 1991;32(2):252–4.
104. Logue JP, Tsang RW, Brierley JD, Simpson WJ. Radioiodine ablation of residual tissue in thyroid cancer: relationship between administered activity, neck uptake and outcome. *Br J Radiol*. 1994;67(803):1127–1131.
105. Bal C, Padhy AK, Jana S, Pant GS, Basu AK. Prospective randomized clinical trial to evaluate the optimal dose of I-131 for remnant ablation in patients with differentiated thyroid carcinoma. *Cancer*. 1996;77(12):2574–2580.
106. Bal CS, Kumar A, Pant GS. Radioiodine dose for remnant ablation in differentiated thyroid carcinoma: a randomized clinical trial in 509 patients. *J Clin Endocrinol Metab*. 2004;89(4):1666–1673.
107. Rosario PW, Reis JS, Barroso AL, Rezende LL, Padrao EL, Fagundes TA. Efficacy of low and high <sup>131</sup>I doses for thyroid remnant ablation in patients with differentiated thyroid carcinoma based on post-operative cervical uptake. *Nucl Med Commun*. 2004;25(11):1077–1081.
108. Pilli T, Brianzoni E, Capocchetti F, et al. A comparison of 1850 (50 mCi) and 3700 MBq (100 mCi) <sup>131</sup>I-iodine administered doses for recombinant thyrotropin-stimulated postoperative thyroid remnant ablation in differentiated thyroid cancer. *J Clin Endocrinol Metab*. 2007;92(9):3542–3546.
109. Cherk MH, Kalff V, Yap KS, Bailey M, Topliss D, Kelly MJ. Incidence of radiation thyroiditis and thyroid remnant ablation success rates following 1110 MBq (30 mCi) and 3700 MBq (100 mCi) post-surgical <sup>131</sup>I ablation therapy for differentiated thyroid carcinoma. *Clin Endocrinol (Oxf)*. 2008;69(6):957–962.
110. Maenpaa HO, Heikkonen J, Vaalavirta L, Tenhunen M, Joensuu H. Low vs. high radioiodine activity to ablate the thyroid after thyroidectomy for cancer: A randomized study. *PLoS One*. 2008;3(4):e1885.
111. Kukulska A, Krajewska J, Gawkowska-Suwinska M, et al. Radioiodine thyroid remnant ablation in patients with differentiated thyroid carcinoma (DTC): Prospective comparison of long-term outcomes of treatment with 30, 60 and 100 mCi. *Thyroid Res*. 2010;3(1):9.
112. Bal C, Chandra P, Kumar A, Dwivedi S. A randomized equivalence trial to determine the optimum dose of iodine-131 for remnant ablation in differentiated thyroid cancer. *Nucl Med Commun*. 2012;33(10):1039–1047.
113. Caglar M, Bozkurt FM, Akca CK, et al. Comparison of 800 and 3700 MBq iodine-131 for the postoperative ablation of thyroid remnant in patients with low-risk differentiated thyroid cancer. *Nucl Med Commun*. 2012;33(3):268–274.
114. Schlumberger M, Catargi B, Borger I, et al. Strategies of radioiodine ablation in patients with low-risk thyroid cancer. *N Engl J Med*. 2012;366(18):1663–1673.
115. Mallick U, Harmer C, Yap B, et al. Ablation with low-dose radioiodine and thyrotropin alfa in thyroid cancer. *N Engl J Med*. 2012;366(18):1674–1685.
116. Kruijff S, Aniss AM, Chen P, et al. Decreasing the dose of radioiodine for remnant ablation does not increase structural recurrence rates in papillary thyroid carcinoma. *Surgery*. 2013;154(6):1337–1344; discussion 1344–1345.
117. Castagna MG, Cevenini G, Theodoropoulou A, et al. Post-surgical thyroid ablation with low or high radioiodine activities results in similar outcomes in intermediate risk differentiated thyroid cancer patients. *Eur J Endocrinol*. 2013;169(1):23–29.
118. Cheng W, Ma C, Fu H, et al. Low- or high-dose radioiodine remnant ablation for differentiated thyroid carcinoma: A meta-analysis. *J Clin Endocrinol Metab*. 2013;98(4):1353–1360.
119. Fang Y, Ding Y, Guo Q, Xing J, Long Y, Zong Z. Radioiodine therapy for patients with differentiated thyroid cancer after thyroidectomy: Direct comparison and network meta-analyses. *J Endocrinol Invest*. 2013;36(10):896–902.
120. Valachis A, Nearchou A. High versus low radioiodine activity in patients with differentiated thyroid cancer: A meta-analysis. *Acta Oncol*. 2013;52(6):1055–1061.
121. Han JM, Kim WG, Kim TY, et al. Effects of low-dose and high-dose postoperative radioiodine therapy on the clinical outcome in patients with small differentiated thyroid cancer having microscopic extrathyroidal extension. *Thyroid*. 2014;24(5):820–825.
122. Zhang Y, Liang J, Yang X, Yang K, Lin Y. Low-dose radioiodine ablation in differentiated thyroid cancer with macroscopic extrathyroidal extension and low level of preablative-stimulated thyroglobulin. *Nucl Med Commun*. 2015;36(6):553–559.
123. Du P, Jiao X, Zhou Y, et al. Low versus high radioiodine activity to ablate the thyroid after thyroidectomy for cancer: a meta-analysis of randomized controlled trials. *Endocrine*. 2015;48(1):96–105.
124. Joung JY, Choi JH, Cho YY, et al. Efficacy of low-dose and high-dose radioactive iodine ablation with rhTSH in Korean patients with differentiated thyroid carcinoma: The first report in nonwestern countries. *Am J Clin Oncol*. 2016;39(4):374–378.
125. Fatima N, Zaman MU, Zaman A, Zaman U, Tahseen R. Comparable ablation efficiency of 30 and 100 mCi of I-131 for low to intermediate risk thyroid cancers using triple negative criteria. *Asian Pac J Cancer Prev*. 2016;17(3):1115–1118.
126. Ibrahim DR KM, Michael MM, Elsayed ZM. Low-dose versus high-dose radioactive iodine ablation of differentiated thyroid carcinoma: a prospective randomized study. *Int J Cancer Ther Oncol*. 2016;4(4):4415.
127. Shengguang Y, Ji-Eun C, Lijuan HL. I-131 for remnant ablation in differentiated thyroid cancer after thyroidectomy: A meta-analysis of randomized controlled evidence. *Med Sci Monit*. 2016;22:2439–2450.
128. Ben Ghachem T, Yeddes I, Meddeb I, et al. A comparison of low versus high radioiodine administered activity in patients with low-risk differentiated thyroid cancer. *Eur Arch Otolaryngol*. 2017;274(2):655–660.
129. Lv RB, Wang QG, Liu C, et al. Low versus high radioiodine activity for ablation of the thyroid remnant after thyroidectomy in Han Chinese with low-risk differentiated thyroid cancer. *Onco Targets Ther*. 2017;10:4051–7.



130. Ma C, Feng F, Wang S, et al. Chinese data of efficacy of low- and high-dose iodine-131 for the ablation of thyroid remnant. *Thyroid*. 2017;27(6):832–837.

131. Qu Y, Huang R, Li L. Low- and high-dose radioiodine therapy for low-/intermediate-risk differentiated thyroid cancer: A preliminary clinical trial. *Ann Nucl Med*. 2017;31(1):71–83.

132. Seo M, Kim YS, Lee JC, et al. Low-dose radioactive iodine ablation is sufficient in patients with small papillary thyroid cancer having minor extrathyroidal extension and central lymph node metastasis (T3 N1a). *Clin Nucl Med*. 2017;42(11):842–846.

133. Jimenez Londoño GA, Garcia Vicente AM, Sastre Marcos J, et al. Low-dose radioiodine ablation in patients with low-risk differentiated thyroid cancer. *Eur Thyroid J*. 2018;7:218–224.

134. Cai XY, Vijayaratham N, McEwan AJB, Reif R, Morrish DW. Comparison of 30 mCi and 50 mCi I-131 doses for ablation of thyroid remnant in papillary thyroid cancer patients. *Endocr Res*. 2018;43(1):11–14.

135. Dehbi HM, Mallick U, Wadsley J, Newbold K, Harmer C, Hackshaw A. Recurrence after low-dose radioiodine ablation and recombinant human thyroid-stimulating hormone for differentiated thyroid cancer (HiLo): Long-term results of an open-label, non-inferiority randomised controlled trial. *Lancet Diabetes Endocrinol*. 2019;7(1):44–51.

136. Vardarli I, Weidemann F, Aboukoura M, Herrmann K, Binse I, Gorges R. Longer-term recurrence rate after low versus high dose radioiodine ablation for differentiated thyroid cancer in low and intermediate risk patients: A meta-analysis. *BMC Cancer*. 2020;20(1):550.

137. Li F, Li W, Gray KD, Zarnegar R, Wang D, Fahey TJ 3rd. Ablation therapy using a low dose of radioiodine may be sufficient in low- to intermediate-risk patients with follicular variant papillary thyroid carcinoma. *J Int Med Res*. 2020;48(11):300060520966491.

138. Dong P, Wang L, Qu Y, Huang R, Li L. Low- and high-dose radioiodine ablation for low-/intermediate-risk differentiated thyroid cancer in China: Large randomized clinical trial. *Head Neck*. 2021;43(4):1311–1320.

139. Thyrogen Prescribing Information. Available from: [https://www.accessdata.fda.gov/drugsatfda\\_docs/label/2014/020898s054lbl.pdf](https://www.accessdata.fda.gov/drugsatfda_docs/label/2014/020898s054lbl.pdf). Accessed on: April 21, 2022.

140. Pacini F, Ladenson PW, Schlumberger M, et al. Radioiodine ablation of thyroid remnants after preparation with recombinant human thyrotropin in differentiated thyroid carcinoma: Results of an international, randomized, controlled study. *J Clin Endocrinol Metab*. 2006;91(3):926–932.

141. Singer MC, Marchal F, Angelos P, et al. Salivary and lacrimal dysfunction after radioactive iodine for differentiated thyroid cancer: American Head and Neck Society Endocrine Surgery Section and Salivary Gland Section Joint Multidisciplinary Clinical Consensus Statement of Otolaryngology, Ophthalmology, Nuclear Medicine and Endocrinology. *Head Neck*. 2020;42(11):3446–3459.

142. Ylli D, Van Nostrand D, Wartofsky L. Conventional radioiodine therapy for differentiated thyroid cancer. *Endocrinol Metab Clin North Am*. 2019;48(1):181–197.

143. Van Nostrand D, Atkins F, Yeganeh F, Acio E, Bursaw R, Wartofsky L. Dose-metrically determined doses of radioiodine for the treatment of metastatic thyroid carcinoma. *Thyroid*. 2002;12(2):121–134.

144. Leblanc G, Tabah R, Liberman M, Sampalis J, Younan R, How J. Large remnant <sup>131</sup>I ablation as an alternative to completion/total thyroidectomy in the treatment of well-differentiated thyroid cancer. *Surgery*. 2004;136(6):1275–1280.

145. Santra A, Bal S, Mahargan S, Bal C. Long-term outcome of lobar ablation versus completion thyroidectomy in differentiated thyroid cancer. *Nucl Med Commun*. 2011;32(1):52–58.

146. Barbesino G, Goldfarb M, Parangi S, Yang J, Ross DS, Daniels GH. Thyroid lobe ablation with radioactive iodine as an alternative to completion thyroidectomy after hemithyroidectomy in patients with follicular thyroid carcinoma: long-term follow-up. *Thyroid*. 2012;22(4):369–376.

147. Giovannella L, Piccardo A, Paone G, Foppiani L, Treglia G, Ceriani L. Thyroid lobe ablation with iodine-<sup>131</sup>I in patients with differentiated thyroid carcinoma: a randomized comparison between 1.1 and 3.7 GBq activities. *Nucl Med Commun*. 2013;34(8):767–770.

148. Jonklaas J, Bianco AC, Cappola AR, et al. Evidence-based use of levothyroxine/liothyronine combinations in treating hypothyroidism: A consensus document. *Eur Thyroid J*. 2021;10(1):10–38.

149. Gonzalez Carvalho JM, Gorlich D, Schober O, et al. Evaluation of <sup>131</sup>I scintigraphy and stimulated thyroglobulin levels in the follow up of patients with DTC: A retrospective analysis of 1420 patients. *Eur J Nucl Med Mol Imaging*. 2017;44(5):744–756.

150. Schlepner MC, Riemann B, Schafers M, Backhaus P, Vrachimis A. Impact of FDG-PET on therapy management and outcome of differentiated thyroid carcinoma patients with elevated thyroglobulin despite negative iodine scintigraphy. *Nuklearmedizin*. 2020;59(5):356–364.

151. Giovannella L, Cosma C, Plebani M. Letter to the editor: what is the role of serum thyroglobulin measurement in patients with differentiated thyroid cancer treated without radioactive iodine? *J Clin Endocrinol Metab*. 2017;102(6):2113–2114.

152. Giovannella L, Clark PM, Chiovato L, et al. Thyroglobulin measurement using highly sensitive assays in patients with differentiated thyroid cancer: A clinical position paper. *Eur J Endocrinol*. 2014;171(2):R33–R46.

153. Park S, Jeon MJ, Oh HS, et al. Changes in serum thyroglobulin levels after lobectomy in patients with low-risk papillary thyroid cancer. *Thyroid*. 2018;28(8):997–1003.

154. Cabanillas ME, McFadden DG, Durante C. Thyroid cancer. *Lancet*. 2016;388(10061):2783–2795.

155. Diessl S, Holzberger B, Mader U, et al. Impact of moderate vs stringent TSH suppression on survival in advanced differentiated thyroid carcinoma. *Clin Endocrinol (Oxf)*. 2012;76(4):586–592.

156. Giovannella L, Van Nostrand D. Advanced differentiated thyroid cancer: When to stop radioiodine? *Q J Nucl Med Mol Imaging*. 2019;63(3):267–70.

157. Brose MS, Smit J, Capdevila J, et al. Regional approaches to the management of patients with advanced, radioactive iodine-refractory differentiated thyroid carcinoma. *Expert Rev Anticancer Ther*. 2012;12(9):1137–1147.

158. Schlumberger M, Brose M, Elisei R, et al. Definition and management of radioactive iodine-refractory differentiated thyroid cancer. *Lancet Diabetes Endocrinol*. 2014;2(5):356–358.

159. Sacks W, Braunstein GD. Evolving approaches in managing radioactive iodine-refractory differentiated thyroid cancer. *Endocr Pract*. 2014;20(3):263–275.

160. Kiyota N, Robinson B, Shah M, et al. Defining radioiodine-refractory differentiated thyroid cancer: Efficacy and safety of lenvatinib by radioiodine-refractory criteria in the SELECT trial. *Thyroid*. 2017;27(9):1135–1141.

161. Van Nostrand D. Radioiodine refractory differentiated thyroid cancer: Time to update the classifications. *Thyroid*. 2018;28(9):1083–1093.

162. Jin Y, Van Nostrand D, Cheng L, Liu M, Chen L. Radioiodine refractory differentiated thyroid cancer. *Crit Rev Oncol Hematol*. 2018;125:111–120.

163. Lee JW, Lee SM, Koh GP, Lee DH. The comparison of <sup>131</sup>I whole-body scans on the third and tenth day after <sup>131</sup>I therapy in patients with well-differentiated thyroid cancer: preliminary report. *Ann Nucl Med*. 2011;25(6):439–446.

164. Ho AL, Grewal RK, Leboeuf R, et al. Selumetinib-enhanced radioiodine uptake in advanced thyroid cancer. *N Engl J Med*. 2013;368(7):623–632.

165. Jaber T, Waguespack SG, Cabanillas ME, et al. Targeted therapy in advanced thyroid cancer to resensitize tumors to radioactive iodine. *J Clin Endocrinol Metab*. 2018;103(10):3698–3705.

166. Tepmongkol S, Keelawat S, Honsawek S, Ruangvejvorachai P. Rosiglitazone effect on radioiodine uptake in thyroid carcinoma patients with high thyroglobulin but negative total body scan: A correlation with the expression of peroxisome proliferator-activated receptor-gamma. *Thyroid*. 2008;18(7):697–704.

167. Rothenberg SM, McFadden DG, Palmer EL, Daniels GH, Wirth LJ. Redifferentiation of iodine-refractory BRAF V600E-mutant metastatic papillary thyroid cancer with dabrafenib. *Clin Cancer Res*. 2015;21(5):1028–1035.

168. Giovannella L, Scappaticcio L. Radioiodine therapy of advanced differentiated thyroid cancer: clinical considerations and multidisciplinary approach. *Q J Nucl Med Mol Imaging*. 2019;63(3):229–234.

169. Iniguez-Ariza NM, Bible KC, Clarke BL. Bone metastases in thyroid cancer. *J Bone Oncol*. 2020;21:100282.

170. Lee SH, Chan RC, Chang SS, et al. Use of bisphosphonates and the risk of osteonecrosis among cancer patients: a systemic review and meta-analysis of the observational studies. *Support Care Cancer*. 2014;22(2):553–560.

171. Sabra MM, Sherman EJ, Tuttle RM. Tumor volume doubling time of pulmonary metastases predicts overall survival and can guide the initiation of multikinase inhibitor therapy in patients with metastatic, follicular cell-derived thyroid carcinoma. *Cancer*. 2017;123(15):2955–2964.

172. Feine U, Lietzenmayer R, Hanke JP, Wöhrle H, Müller-Schauenburg W. <sup>18</sup>F-FDG whole-body PET in differentiated thyroid carcinoma. Flipflop in uptake patterns of <sup>18</sup>F-FDG and <sup>131</sup>I. [In German]. *Nuklearmedizin*. 1995;34(4):127–134.

173. Feine U, Lietzenmayer R, Hanke JP, Held J, Wöhrle H, Müller-Schauenburg W. Fluorine-18-FDG and iodine-131-iodide uptake in thyroid cancer. *J Nucl Med*. 1996;37(9):1468–1472.

174. Liu M, Cheng L, Jin Y, Ruan M, Sheng S, Chen L. Predicting <sup>131</sup>I-avidity of metastases from differentiated thyroid cancer using <sup>18</sup>F-FDG PET/CT in postoperative patients with elevated thyroglobulin. *Sci Rep*. 2018;8(1):4352.

175. Silberstein EB. The problem of the patient with thyroglobulin elevation but negative iodine scintigraphy: The TENIS syndrome. *Semin Nucl Med*. 2011;41(2):113–120.

176. Giovannella L, Treglia G, Ceriani L, Verburg F. Detectable thyroglobulin with negative imaging in differentiated thyroid cancer patients. What to do with negative anatomical imaging and radioiodine scan? *Nuklearmedizin*. 2014;53(1):1–10.

177. Van Nostrand D. Radioiodine imaging for differentiated thyroid cancer: Not all radioiodine images are performed equally. *Thyroid*. 2019;29(7):901–909.

178. Wu D, Ylli D, Gomes Lima CJ, et al. Use of <sup>99m</sup>Tc-sestamibi SPECT/CT when conventional imaging studies are negative for localizing suspected recurrence in

- differentiated thyroid cancer: A method and a lesson for clinical management. *Endocrine*. 2018;62(1):57–63.
179. Binsse I, Poeppel TD, Ruhlmann M, et al.  $^{68}\text{Ga}$ -DOTATOC PET/CT in patients with iodine- and  $^{18}\text{F}$ -FDG-negative differentiated thyroid carcinoma and elevated serum thyroglobulin. *J Nucl Med*. 2016;57(10):1512–1517.
  180. Vrachimis A, Stegger L, Wenning C, et al.  $^{68}\text{Ga}$ -DOTATATE PET/MRI and  $^{18}\text{F}$ -FDG PET/CT are complementary and superior to diffusion-weighted MR imaging for radioactive-iodine-refractory differentiated thyroid cancer. *Eur J Nucl Med Mol Imaging*. 2016;43(10):1765–1772.
  181. Czepczynski R, Matysiak-Grzes M, Gryczynska M, et al. Peptide receptor radionuclide therapy of differentiated thyroid cancer: efficacy and toxicity. *Arch Immunol Ther Exp (Warsz)*. 2015;63(2):147–154.
  182. Versari A, Sollini M, Frasoldati A, et al. Differentiated thyroid cancer: A new perspective with radiolabeled somatostatin analogues for imaging and treatment of patients. *Thyroid*. 2014;24(4):715–726.
  183. Roll W, Riemann B, Schafers M, Stegger L, Vrachimis A.  $^{177}\text{Lu}$ -DOTATATE therapy in radioiodine-refractory differentiated thyroid cancer: A single center experience. *Clin Nucl Med*. 2018;43(10):e346–e351.
  184. Robbins RJ, Wan Q, Grewal RK, et al. Real-time prognosis for metastatic thyroid carcinoma based on 2- $^{18}\text{F}$ -fluoro-2-deoxy-D-glucose-positron emission tomography scanning. *J Clin Endocrinol Metab*. 2006;91(2):498–505.
  185. Grebe SK, Hay ID. Prognostic factors and management in thyroid cancer—Consensus or controversy? *West J Med*. 1996;165(3):156–157.
  186. Ain KB. Papillary thyroid carcinoma. Etiology, assessment, and therapy. *Endocrinol Metab Clin North Am*. 1995;24(4):711–760.
  187. Xing M, Haugen BR, Schlumberger M. Progress in molecular-based management of differentiated thyroid cancer. *Lancet*. 2013;381(9871):1058–1069.
  188. Wang W, Larson SM, Tuttle RM, et al. Resistance of  $^{18}\text{F}$ -fluorodeoxyglucose-avid metastatic thyroid cancer lesions to treatment with high-dose radioactive iodine. *Thyroid*. 2001;11(12):1169–1175.
  189. Brierley JD, Panzarella T, Tsang RW, Gospodarowicz MK, O'Sullivan B. A comparison of different staging systems predictability of patient outcome. Thyroid carcinoma as an example. *Cancer*. 1997;79(12):2414–2423.
  190. Sherman SI, Brierley JD, Sperling M, et al. Prospective multicenter study of thyroid carcinoma treatment: initial analysis of staging and outcome. National Thyroid Cancer Treatment Cooperative Study Registry Group. *Cancer*. 1998;83(5):1012–1021.
  191. Miyauchi A, Kudo T, Miya A, et al. Prognostic impact of serum thyroglobulin doubling-time under thyrotropin suppression in patients with papillary thyroid carcinoma who underwent total thyroidectomy. *Thyroid*. 2011;21(7):707–716.
  192. Brose MS, Nutting CM, Jarzab B, et al. Sorafenib in radioactive iodine-refractory, locally advanced or metastatic differentiated thyroid cancer: A randomised, double-blind, phase 3 trial. *Lancet*. 2014;384(9940):319–328.
  193. Schlumberger M, Tahara M, Wirth LJ, et al. Lenvatinib versus placebo in radioiodine-refractory thyroid cancer. *N Engl J Med*. 2015;372(7):621–630.
  194. Carhill AA, Cabanillas ME, Jimenez C, et al. The noninvestigational use of tyrosine kinase inhibitors in thyroid cancer: Establishing a standard for patient safety and monitoring. *J Clin Endocrinol Metab*. 2013;98(1):31–42.
  195. Eisenhauer EA, Therasse P, Bogaerts J, et al. New response evaluation criteria in solid tumours: Revised RECIST guideline (version 1.1). *Eur J Cancer*. 2009;45(2):228–247.
  196. Wang W, Larson SM, Fazzari M, et al. Prognostic value of  $^{18}\text{F}$ -fluorodeoxyglucose positron emission tomographic scanning in patients with thyroid cancer. *J Clin Endocrinol Metab*. 2000;85(3):1107–1113.
  197. Robbins RJ, Larson SM. The value of positron emission tomography (PET) in the management of patients with thyroid cancer. Best practice and research. *Clin Endocrinol Metab*. 2008;22(6):1047–1059.
  198. Dibble EH, Alvarez AC, Truong MT, Mercier G, Cook EF, Subramaniam RM.  $^{18}\text{F}$ -FDG metabolic tumor volume and total glycolytic activity of oral cavity and oropharyngeal squamous cell cancer: Adding value to clinical staging. *J Nucl Med*. 2012;53(5):709–715.
  199. Manohar PM, Beesley LJ, Bellile EL, Worden FP, Avram AM. Prognostic value of FDG-PET/CT metabolic parameters in metastatic radioiodine-refractory differentiated thyroid cancer. *Clin Nucl Med*. 2018;43(9):641–647.
  200. Groopman J, Hartzband P. *Your Medical Mind: How to Decide What is Right for You*. London, UK: Penguin Books; 2011.