

¹⁸F-FDG PET/CT Identifies Predictors of Survival in Patients with Locally Advanced Cervical Carcinoma and Paraaortic Lymph Node Involvement to Allow Intensification of Treatment

Hélène Leray¹, Erwan Gabiache², Frédéric Courbon², Isabelle Brenot-Rossi³, Hélène Colineaux⁴, Benoît Lepage⁴, Eric Lambaudie⁵, Alejandra Martinez¹, Marie Voglimacci¹, Ariane Weyl¹, Marion Deslandres⁶, Anne Ducassou⁷, Stéphanie Motton¹, Charlotte Vaysse¹, and Elodie Chantalat¹

¹Department of Surgical Oncology, IUCT-Oncopole, Toulouse, France; ²Department of Nuclear Medicine, IUCT-Oncopole, Toulouse, France; ³Department of Nuclear Medicine, Institut Paoli-Calmettes, Marseille, France; ⁴Department of Epidemiology, University Hospital Centre Rangueil, Toulouse, France; ⁵Department of Surgical Oncology, Institut Paoli-Calmettes, Marseille, France; ⁶Department of Medical Oncology, IUCT-Oncopole, France; and ⁷Department of Radiation Oncology, IUCT-Oncopole, France

Our objective was to use ¹⁸F-FDG PET/CT to identify a high-risk subgroup requiring therapeutic intensification among patients with locally advanced cervical cancer (LACC) and paraaortic lymph node (PALN) involvement. **Methods:** In this retrospective multicentric study, patients with LACC and PALN involvement concurrently treated with chemoradiotherapy and extended-field radiotherapy between 2006 and 2016 were included. A senior nuclear medicine specialist in PET for gynecologic oncology reviewed all ¹⁸F-FDG PET/CT scans. Metabolic parameters including SUV_{max}, metabolic tumor volume, and total lesion glycolysis (TLG) were determined for the primary tumor, pelvic lymph nodes, and PALNs. Associations between these parameters and overall survival (OS) were assessed with the Cox proportional hazards model. **Results:** Sixty-eight patients were enrolled in the study. Three-year OS was 55.5% (95% confidence interval, 40.8–68.0). When adjusted for age, stage, and histology, pelvic lymph node TLG, PALN TLG, and PALN SUV_{max} were significantly associated with OS ($P < 0.005$). **Conclusion:** ¹⁸F-FDG PET/CT was able to identify predictors of survival in the homogeneous subgroup of patients with LACC and PALN involvement, thus allowing therapeutic intensification to be proposed.

Key Words: ¹⁸F-FDG PET/CT; locally advanced cervical cancer; paraaortic lymph node involvement; SUV_{max}; total lesion glycolysis

J Nucl Med 2020; 61:1442–1447

DOI: 10.2967/jnumed.119.238824

The diagnosis of paraaortic lymph node (PALN) involvement in patients with locally advanced cervical cancer (LACC) is essential for risk stratification. Together with tumor volume, International Federation of Gynaecology and Obstetrics (FIGO) stage, depth of stromal cervix invasion, lymphovascular space invasion,

locoregional extension, response to chemoradiotherapy, and nodal status, PALN involvement is inversely associated with survival (1–4). Since the metaanalysis of Green et al., the treatment of LACC has consisted of pelvic radiotherapy with concurrent low-dose platinum-based chemotherapy, followed by uterovaginal brachytherapy (5–10), as recommended in the Guidelines of the European Society for Medical Oncology, the National Cancer Institute, and the American Society of Clinical Oncology in 2016. Extended-field radiotherapy is therefore performed on patients whose disease has spread to the PALNs. Despite extended-field radiotherapy, patients with PALN involvement have a substantially shorter median survival (33 mo), with 40% of patients developing distant metastases (4,11,12). The use of systemic adjuvant or neoadjuvant therapies, in combination with chemoradiotherapy, may be beneficial for improving the prognosis of these patients. However, many of these treatments are still being trialed, as improvements in survival are often associated with increases in toxicity (13–15). It is therefore crucial to identify factors that predict response to treatment to improve the survival of patients exhibiting the most unfavorable prognostic features. Not surprisingly, the consensus from the Gynaecologic Cancer Intergroup concludes that there is a real need for new trials directed at these high-risk cervical cancer patients (12).

¹⁸F-FDG PET/CT is recommended as part of an extension to the LACC assessment and for detecting lymph node metastases in the paraaortic region (11,16). Several authors have also evaluated the prognostic value of ¹⁸F-FDG PET/CT metrics. Of these, the SUV_{max} has been the most widely studied (17). However, the populations investigated in these types of studies were mostly heterogeneous, and patients with PALN involvement were underrepresented.

The objective of this study was to assess the link between metabolic ¹⁸F-FDG PET/CT parameters and overall survival (OS) in patients with LACC specifically having PALN involvement.

MATERIALS AND METHODS

Patients and Treatment

Patients with LACC (FIGO stage IB2–IVA) and positive PALNs, treated at the Claudius Regaud Cancer Centre, at the University Hospital of Toulouse, and at the Paoli-Calmettes Cancer Centre, Marseille, France, between January 2006 and November 2016, were selected for

Received Oct. 25, 2019; revision accepted Jan. 28, 2020.

For correspondence or reprints contact: Elodie Chantalat, Department of Surgical Oncology, IUCT-Oncopole, 1 avenue Irène Joliot-Curie, 31059 Toulouse Cedex 9, France.

E-mail: chantalat.elodie@iuct-oncopole.fr

Published online Feb. 7, 2020.

COPYRIGHT © 2020 by the Society of Nuclear Medicine and Molecular Imaging.

this study. All patients had cervical cancer confirmed by biopsy and underwent a physical examination, an initial pelvic MRI scan, and an ^{18}F -FDG PET/CT scan. Cervical cancers were retrospectively classified with the 2009 FIGO staging system. The diagnosis of PALN spread was based on the initial ^{18}F -FDG PET/CT scan or on histopathologic examination of harvested PALNs as part of lymphadenectomy staging. Micrometastatic PALN involvement was defined as a PALN metastasis of 0.2–2 mm (18).

Patients were treated with pelvic and paraaortic external radiotherapy in 25 fractions of 1.8 Gy for a total dose of 45 Gy for 5 wk with concomitant platinum-based chemotherapy (cisplatin at a dose of 40 mg/m² per week or carboplatin [area under the curve] when cisplatin was poorly tolerated). Gynecologic examination and 1.5-T MRI with gadolinium were performed during the first week after completion of the 45-Gy radiotherapy. Treatment varied, depending on the type of response detected by MRI. Pretherapeutic tumor size was defined as the largest tumor dimension measured on pretherapeutic MRI. Tumor size after therapy was the largest tumor size measured after 45-Gy radiotherapy. Response was considered good when the maximum diameter of the tumor decreased by more than 50% at the 45-Gy MRI evaluation. When the decrease was more than 50%, further treatment consisted of additional pulsed dose-rate intracavitary brachytherapy for an equivalent total dose of 80–90 Gy. Before 2008, additional boosts of up to 65 Gy in total were sometimes given at the end of brachytherapy in external radiotherapy in cases of macroscopic pelvic or PALN or parametrial involvement. When intensity-modulated radiation therapy became available, a simultaneous integrated boost was given on metastatic pelvic and PALN involvement at doses of 57.5 Gy in 25 fractions. If the tumor reduction rate was less than 50%, completion treatment was left at the discretion of the treating physician and included either brachytherapy alone or completion surgery to resect any residual tumor with clearly defined margins. This surgery was mostly performed 6 wk after preoperative brachytherapy for an equivalent total dose of 60 Gy. For patients recruited at the Paoli Calmette Institute, systematic completion surgery was performed 6 wk after preoperative brachytherapy, regardless of whether the response was complete.

We included 4 patients for whom distal metastatic disease was identified at the initial diagnosis, was subsequently treated with neoadjuvant chemotherapy, and produced a good tumor response, allowing evaluation of a complete curative treatment regimen, which included extended paraaortic irradiation fields.

Follow-up included a clinical examination every 4 mo for 2 y and every 6 mo for the following 3 y. Imaging (MRI, CT, PET/CT) complementary to the clinical examination was performed as part of the follow-up. Relapse was defined as the emergence of a tumor locus after a complete response to treatment based on end-of-treatment reassessment imaging examinations (MRI or PET/CT). Progression was defined as an increase in the number or size of tumor foci under treatment, or after treatment in the event of a partial response, based on the evaluation of imaging according to PERCIST (or RECIST when PET/CT was not available).

Exclusion criteria were the following: rare histologic subtypes, a lack of available ^{18}F -FDG PET/CT images for centralized analysis by the 2 independent investigators, the absence of PALN involvement, peritoneal carcinosis, patients whose treatment was not given with curative intent, and a lack of extended-field radiotherapy for PALN involvement.

The study was approved by the local institutional review board from both institutions, and all patients gave written informed consent to use their data.

^{18}F -FDG PET/CT Parameters and Interpretation

All patients underwent pretreatment ^{18}F -FDG PET/CT scans. The PET data were reconstructed using an iterative fully 3-dimensional

algorithm, with the CT images being used for attenuation correction, anatomic identification, and localization of radiotracer uptake.

^{18}F -FDG PET/CT imaging based on a standardized protocol was performed as part of the initial work-up before administration of any treatment. Whole-body images were obtained using a full-ring PET/CT scanner. All patients fasted for at least 6 h before injection of the ^{18}F -FDG. Blood glucose levels were checked before the injection, and the injected dose and the time between injection and acquisition were recorded. Patients underwent full-body scans after a resting period of 60 ± 6 min. The total scan duration varied with the type of PET/CT camera used, the ^{18}F -FDG injected dose, and the number of bed positions, and the protocols were adapted to each system's count rate. Because of bladder refilling, complementary pelvic acquisitions were sometimes performed after intravenous administration of furosemide (20 mg).

The PET/CT scanners used for this study were a Siemens Biograph 6, a GE Healthcare Discovery IQ, a GE Healthcare DST4, and a Philips Gemini TF16. A senior nuclear medicine specialist in PET for gynecologic oncology reviewed all ^{18}F -FDG PET/CT scans. All patient metabolic parameters were reviewed by another independent senior nuclear medicine specialist using a double-blind approach, to ensure homogeneous measurement of metabolic variables throughout the study. Segmentation of tumor volumes for cervical tumors, as well as pelvic lymph nodes and PALNs, was performed using the GE Healthcare software AWTServer 3.0, with an automatic threshold set at 40% of SUV_{max} , in accordance with the European Association of Nuclear Medicine guidelines (19). This automatic contouring was manually corrected if necessary, taking CT and MRI data into account.

Metabolic parameters included SUV_{max} , SUV_{mean} , metabolic tumor volume (MTV), and total lesion glycolysis (TLG) measurements of the primary cervical tumor, pelvic lymph nodes, and PALNs, with data from the most active site used in the subsequent analyses. The size of the primary cervical tumor was determined from the CT image along 2 axes of the transverse plane. The SUV_{max} was defined as the maximum uptake value of tracer within a tumor lesion. The TLG expresses the whole glycolysis of a lesion. The TLG was obtained as the product of MTV and SUV_{mean} .

Statistical Analysis

We evaluated any potential associations between OS and putative prognostic factors with the Cox proportional hazards model. To meet the conditions for applying the model while maintaining sufficient power for the analysis, quantitative variables were dichotomized at the median, with the exception of the PALN SUV_{max} , for which the threshold of 3.3 proposed by Yen et al. (20) was used. We evaluated all potential associations between individual metabolic parameters and survival by bivariate analysis and, subsequently, by models adjusted for specific clinical factors (i.e., age, histologic subtype, and FIGO stage). *P* values of less than 0.05 were considered significant. We present results for parameters whose *P* values were less than 0.20 in adjusted models. A dose effect was also explored graphically using a Cox survival curve derived from terciles of each variable. Statistical analyses were performed using STATA release 14.2 (StataCorp LP).

RESULTS

Sixty-eight patients were included in the study. Their characteristics are summarized in Table 1. Forty-two patients (66.7%) had pretherapeutic surgical paraaortic staging by laparoscopy. Four patients (9.5%) had micrometastatic PALN involvement.

Eleven of the 68 patients did not receive any brachytherapy: 2 because of vaginism, 1 because of neutropenia, 1 because of progression during the course of treatment, and 7 because of noncompliance with the procedure.

TABLE 1
Patient Characteristics

Characteristic	Data
Median age (y)	54.4 (range, 27.4–80.7)
Enrolling center	
Toulouse centers	44 (64.7%)
Marseille center	24 (35.3%)
Histologic subtype	
Squamous cell carcinoma	59 (86.8%)
Adenocarcinoma	9 (13.2%)
FIGO stage	
IB1, IB2, IIA	13 (19.1%)
IIB, IIIA	43 (63.2%)
IIIB, IVA, IVB	12 (17.7%)

Before chemoradiotherapy, the median cervical tumor size was 57.5 mm (range, 26–127 mm). Sixty-two patients had abnormal pelvic lymph nodes, and the median number of positive pelvic lymph nodes was 4 (range, 1–12). Fifty-two patients had abnormal PALNs, and the median number of positive PALNs was 1 (range, 1–8). Metabolic parameters before ^{18}F -FDG PET/CT treatment are presented in Table 2.

After a median follow-up of 24.3 mo (95% confidence interval [CI], 3.5–138.7 mo), 31 patients (45.6%) had succumbed to their disease. Sixteen patients (23.5%) had progressed, and 21 patients (39.6%) had relapsed. Metastases developed in 62.5% and 90.5% of the patients who progressed or relapsed, respectively. OS was 39.7% (95% CI, 56.5–79.7) after 2 y and 55.5% (95% CI, 40.8–68.0) after 3 y. Median OS was 43.9 mo (Fig. 1).

In terms of patient characteristics, stage IIIB or IV tumor was associated with a significantly poorer outcome (hazard ratio [HR], 4.08; $P = 0.021$) (Table 3). Among the ^{18}F -FDG PET/CT pre-treatment parameters (Table 4), adjusted for patient age, stage, and histology, pelvic lymph node TLG, PALN TLG, and PALN SUV_{max} were significantly associated with survival ($P < 0.005$). Patients with a higher cervical tumor SUV_{max} or a higher pelvic

TABLE 2
Metabolic Parameters Before Treatment

Parameter	Data
Cervical tumor SUV_{max} ($n = 68$)	14.9 (6–38.2)
Cervical tumor MTV ($n = 68$)	54.4 (3.8–519)
Cervical tumor TLG ($n = 68$)	369.3 (36.6–3,475.6)
Pelvic lymph node SUV_{max} ($n = 62$)	7.8 (1.8–21.2)
Pelvic lymph node MTV ($n = 62$)	2.8 (0.2–41)
Pelvic lymph node TLG ($n = 62$)	12.5 (0.4–300.7)
PALN SUV_{max} ($n = 52$)	3.7 (1.5–24.3)
PALN MTV ($n = 52$)	0.9 (0.2–15.4)
PALN TLG ($n = 52$)	2.2 (0.3–115)

Data are median, followed by range in parentheses.

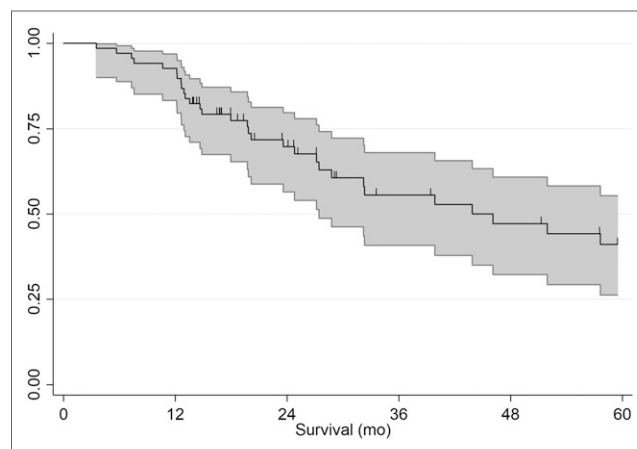


FIGURE 1. Kaplan–Meier plots of overall survival.

lymph node SUV_{max} also tended to have a higher mortality rate, at the limit of significance ($P = 0.076$ and $P = 0.077$, respectively). Graphically (Fig. 2), we observed a dose effect for pelvic lymph node and PALN SUV_{max} and for pelvic lymph node and PALN TLG.

DISCUSSION

Despite current chemoradiotherapy management with extended-field radiotherapy, the prognosis of LACC patients with PALN involvement remains poor (2,12,21,22). Overall, the results from our series are consistent with data reported in the literature. OS was 39.7% (95% CI, 56.5–79.7) after 2 y and 55.5% (95% CI, 40.8–68.0) after 3 y. Sixteen patients in our study (23.5%) progressed, and 21 patients (39.6%) relapsed. Metastases developed in 62.5% and 90.5% of the patients who progressed or relapsed, respectively. The rate of metastatic relapse raises questions about

TABLE 3
OS According to Age, Histologic Subtype, and FIGO Stage
(Cox Models)

Parameter	<i>n</i>	HR	95% CI	<i>P</i>
Age (y)				
27.4–46.3	17	Ref		
46.7–54.0	17	1.71	0.68–4.30	0.256
57.8–59.1	17	0.72	0.27–1.93	0.511
60.0–80.7	17	0.67	0.33–1.99	0.466
Histologic subtype				
Squamous cell carcinoma	59	Ref		
Adenocarcinoma	9	2.24	0.96–5.21	0.061
FIGO stage				
IB1, IB2, IIA	13	Ref		
IIB, IIIA	43	1.56	0.53–4.63	0.420
IIIB, IVA, IVB	12	4.08	1.23–13.5	0.021

Ref = n = numbers by modality; HR = hazard ratio; and 95% CI = 95% confidence interval.

TABLE 4
OS According to Metabolic Parameters (Cox Models)

Parameter	<i>n</i>	Unadjusted models			Adjusted models*		
		HR	95% CI	<i>P</i>	HR	95% CI	<i>P</i>
Median cervical tumor SUV _{max}							
6.0; 14.8	34	Ref			Ref		
15.0; 38.2	34	1.61	0.79–3.29	0.192	1.60	0.74–3.47	0.233
Median cervical tumor size							
26; 57	34	Ref			Ref		
58; 127	34	2.49	1.20–5.17	0.014	2.24	0.92–5.43	0.076
Median pelvic lymph node SUV _{max}							
1.8; 7.5	31	Ref			Ref		
8.11; 21.2	31	2.27	1.03–5.03	0.043	2.27	0.82–5.62	0.077 [†]
Median pelvic lymph node TLG							
0.4; 12.5	32	Ref			Ref		
13.0; 300.7	30	2.93	1.19–6.67	0.010	3.72	1.48–9.35	0.005 [†]
Threshold PALN SUV _{max}							
1.5; 3.3	23	Ref			Ref		
3.3; 24.3	28	4.67	1.57–13.87	0.005	4.80	1.44–16.05	0.011 [†]
Median PALN TLG							
0.3; 2.2	27	Ref			Ref		
2.4; 115.0	25	3.00	1.22–7.39	0.017	3.11	1.06–9.19	0.039 [†]

*Adjustment on quartiles of age, FIGO stage, and histologic subtype.

†Cox-estimated survival curves (terciles) compatible with a dose effect.

Ref = *n* = numbers by modality; HR = hazard ratio; and 95% CI = 95% confidence interval.

the presence of occult metastases at the initial diagnosis. Systemic therapies in addition to standard chemoradiotherapy may prove beneficial in these patients. The phase III INTERLACE (NCT01566240) and OUTBACK (NCT01414608) trials are currently under way to evaluate these approaches by analyzing the potential benefits of carboplatin and paclitaxel chemotherapy for neoadjuvant or adjuvant applications, respectively. Regrettably, the presence of lymph node involvement above the common iliac artery is an exclusion criterion for these trials. Moreover, the significant side effects of these treatments compel research teams to select subgroups of patients at high risk of relapse using novel prognostic factors.

In addition to its benefits in LACC staging, ¹⁸F-FDG PET/CT could therefore also provide useful prognostic data in these high-risk patient groups. To our knowledge, our current study is not only the first but also the largest to evaluate the predictive power of ¹⁸F-FDG PET/CT in an LACC patient population with PALN involvement. It shows that in patients matched for age, stage, and histology, pelvic lymph node TLG (HR, 3.72; *P* = 0.05), PALN TLG (HR, 3.11; *P* = 0.039), and PALN SUV_{max} (HR, 4.80; *P* = 0.011) are independently associated with OS. TLG is the product of MTV and the SUV_{mean} of the tumor lesion and is related to the size and metabolism of the lesion. TLG also reflects the activity of the entire lesion volume, unlike SUV_{max}, which is a maximum value retained from the voxel that fixes most metabolites. In addition, TLG is directly dependent on the extent of tumor volume included at the site.

Pelvic lymph node SUV_{max} was associated with OS in univariate analysis (HR, 2.27; *P* = 0.043). The prognostic significance of lymph node SUV_{max} in cervical cancer was highlighted by Kidd

et al. in a prospective study of 83 patients (FIGO IB1–IIIB). They demonstrated that a high pelvic lymph node SUV_{max} was associated with persistence of the disease after treatment (*P* = 0.0025), with relapse (*P* = 0.0035), and with a worse OS (*P* = 0.0378) (23). For PALN SUV_{max}, a study published by Yen et al. involving 70 patients (FIGO I–IV), of whom 20 had PALN involvement, identified a PALN SUV_{max} above a 3.3 threshold to be significantly related to poor OS (20). The same threshold used in our study revealed a significant association between PALN SUV_{max} and OS in univariate analysis (HR, 4.67; *P* = 0.05) and also after adjusting for age, FIGO stage, and histologic subtype (HR, 4.8; *P* = 0.011).

In a retrospective study of 56 patients (FIGO IIB–IIIB), Chong et al. found that node SUV_{max}, node MTV, and node TLG correlated with relapse-free survival in univariate analysis, but only node SUV_{max} was shown to predict relapse-free survival in multivariate analysis (24). Unlike our study, in which the highest node MTV and TLG metabolic values were those of the pelvic lymph nodes or PALNs, the values of node MTV and TLG were defined by Chong et al. as the sum of the MTV and TLG values of each hypermetabolic node. In any case, data reported in the literature should be interpreted conservatively in light of the great variability due not only to the different characteristics of cohorts but also to the different measurement criteria used.

The SUV_{max} for the primary cervical tumor is the most commonly used metabolic parameter in current routine practice, and its prognostic benefit in the management of cervical cancers has been extensively described in the literature (17,25–28). The prognostic value of primary cervical tumor MTV and TLG has also been investigated in several studies (29–33). In our study,

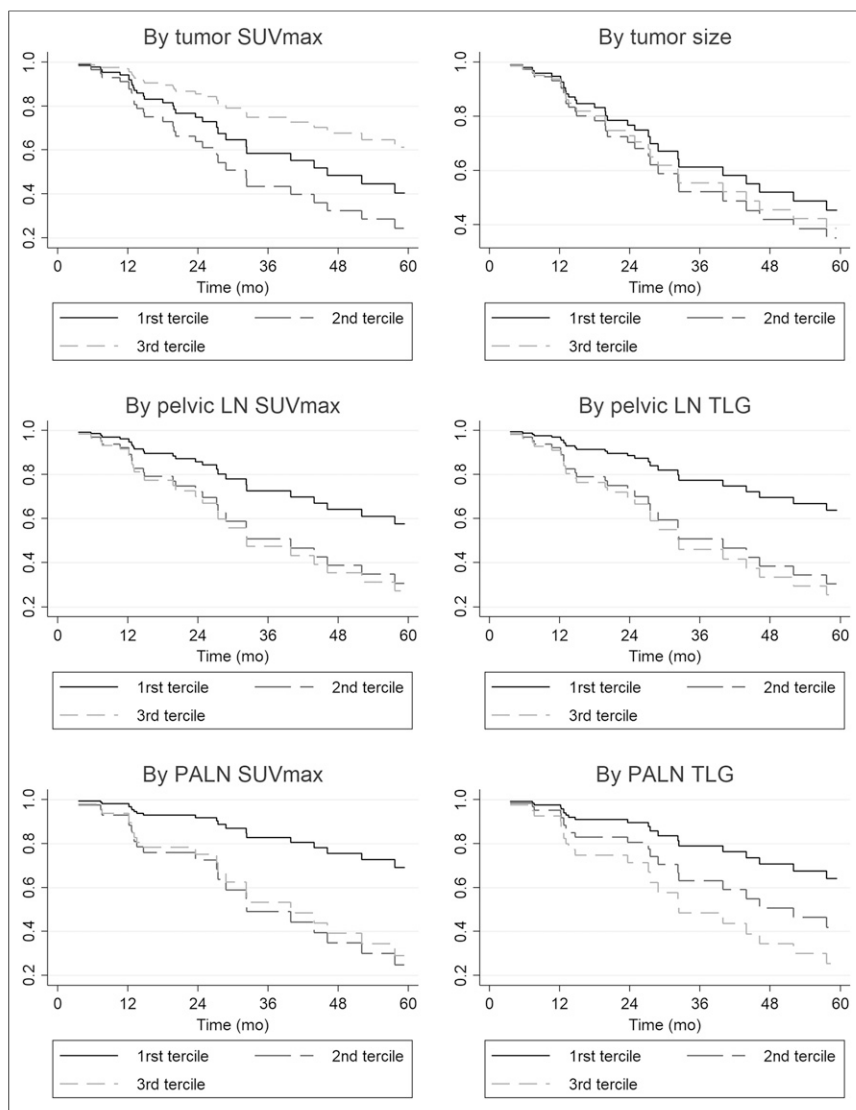


FIGURE 2. Cox analysis survival curves by tertiles of metabolic parameters. LN = lymph node.

none of the metabolic parameters of primary cervical tumors appeared to be correlated with OS. Unlike the populations in previous studies, our study population was highly specific since it consisted exclusively of LACC with PALN involvement, which is well known for its dismal outcome. The other studies examined very heterogeneous groups of patients with regard to the stage of the primary disease and therefore covered a much broader spectrum with very different prognoses.

^{18}F -FDG PET/CT is also a useful test for evaluating metabolic tumor response at the end of treatment. Several studies have shown that the metabolic response determined by ^{18}F -FDG PET/CT, performed on average 3 mo after the end of radiotherapy, is predictive of survival (33–36). However, the analysis of the metabolic response by ^{18}F -FDG PET/CT is very much operator-dependent, because of the application of visual scales and criteria that are sometimes complex to use routinely (PERCIST (37)), as well as the prerequisite for specific anatomic understanding of pelvic oncology imaging practices. The measurement of TLG in a residual cervical tumor using posttherapeutic ^{18}F -FDG PET/CT might provide functional information in addition to the morphologic information provided by the

reevaluation of MR images. In addition, by determining thresholds of ^{18}F -FDG PET/CT reassessment of metabolic parameters, the evaluation of tumor responsiveness might be standardized. Specifically, the analysis of tumor responses with TLG might be developed with an artificial intelligence approach using automatic segmentation and software learning, that is, deep learning. As such, it might constitute a useful aid in interpreting results and even play an important role in centers not staffed with nuclear medicine, gynecology, or oncology specialists.

Our study had some limitations. It was retrospective and small, as can be justified by the choice of the patient subgroup. It included patients from 2 cancer control centers, thus introducing a degree of heterogeneity in the therapeutic management. Nevertheless, 93% of patients were treated with a complete chemoradiotherapy schedule, and all received extended-field radiotherapy to the paraaortic area. Despite the established recommendations, this heterogeneity of management has been previously highlighted in the literature in this subgroup of patients (38). The ^{18}F -FDG PET/CT data from our study are based on the technical specifications of several different PET/CT camera manufacturers, who in some cases use very different image acquisition and reconstruction methods. To limit this heterogeneity, we opted to eliminate data from machines that were too old, and not to use the most recent image reconstruction algorithms, which are known to modify significantly the way SUV_{max} is calculated (QClear; GE Healthcare). In addition, the centralized review of all ^{18}F -FDG PET/CT examinations by a nuclear medicine specialist

ensured a more accurate comparison of ^{18}F -FDG PET/CT metabolic parameters.

CONCLUSION

^{18}F -FDG PET/CT helped to identify predictors of survival in the homogeneous subgroup of patients with LACC and PALN involvement. Further studies are necessary to validate the prognostic impact of PALN SUV_{max} and PALN and pelvic lymph node TLG as new metabolic parameters in this high-risk subgroup, especially to allow therapeutic intensification to be adopted.

DISCLOSURE

No potential conflict of interest relevant to this article was reported.

ACKNOWLEDGMENT

We thank our methodologist, Samuel Ladias, for his contribution.

KEY POINTS

QUESTION: Can ^{18}F -FDG PET/CT help identify predictors of survival in patients with LACC and PALN involvement to allow intensification of treatment?

PERTINENT FINDINGS: Pelvic lymph node TLG, PALN TLG, and PALN SUV_{max} were significantly associated with OS ($P < 0.005$).

IMPLICATIONS FOR PATIENT CARE: ^{18}F -FDG PET/CT was able to identify predictors of survival in the subgroup of patients with LACC and PALN involvement, thus allowing therapeutic intensification to be proposed.

REFERENCES

- Morice P, Castaigne D, Pautier P, et al. Interest of pelvic and paraaortic lymphadenectomy in patients with stage IB and II cervical carcinoma. *Gynecol Oncol*. 1999;73:106–110.
- Paumier A, Blanchard P, Mazon R, et al. Outcome of cervical carcinoma with locoregional lymph node involvement by FDG-PET [in French]. *Cancer Radiother*. 2012;16:183–189.
- Rose PG, Java J, Whitney CW, et al. Nomograms predicting progression-free survival, overall survival, and pelvic recurrence in locally advanced cervical cancer developed from an analysis of identifiable prognostic factors in patients from NRG oncology/gynecologic oncology group randomized trials of chemoradiotherapy. *J Clin Oncol*. 2015;33:2136–2142.
- Chantalat E, Vidal F, Leguevaque P, et al. Cervical cancer with paraaortic involvement: do patients truly benefit from tailored chemoradiation therapy? A retrospective study on 8 French centers. *Eur J Obstet Gynecol Reprod Biol*. 2015;193:118–122.
- Marth C, Landoni F, Mahner S, McCormack M, Gonzalez-Martin A, Colombo N. Cervical cancer: ESMO clinical practice guidelines for diagnosis, treatment and follow-up. *Ann Oncol*. 2017;28:iv72–iv83.
- Chuang LT, Temin S, Camacho R, et al. Management and care of women with invasive cervical cancer: American Society of Clinical Oncology resource-stratified clinical practice guideline. *J Glob Oncol*. 2016;2:311–340.
- Eifel PJ, Winter K, Morris M, et al. Pelvic irradiation with concurrent chemotherapy versus pelvic and para-aortic irradiation for high-risk cervical cancer: an update of Radiation Therapy Oncology Group trial (RTOG) 90-01. *J Clin Oncol*. 2004;22:872–880.
- Morris M, Eifel PJ, Lu J, et al. Pelvic radiation with concurrent chemotherapy compared with pelvic and para-aortic radiation for high-risk cervical cancer. *N Engl J Med*. 1999;340:1137–1143.
- Rose PG, Bundy BN, Watkins EB, et al. Concurrent cisplatin-based radiotherapy and chemotherapy for locally advanced cervical cancer. *N Engl J Med*. 1999;340:1144–1153.
- Green JA, Kirwan JM, Tierney JF, et al. Survival and recurrence after concomitant chemotherapy and radiotherapy for cancer of the uterine cervix: a systematic review and meta-analysis. *Lancet*. 2001;358:781–786.
- Leblanc E, Narducci F, Frumovitz M, et al. Therapeutic value of pretherapeutic extraperitoneal laparoscopic staging of locally advanced cervical carcinoma. *Gynecol Oncol*. 2007;105:304–311.
- Sagae S, Monk BJ, Pujade-Lauraine E, et al. Advances and concepts in cervical cancer trials: a road map for the future. *Int J Gynecol Cancer*. 2016;26:199–207.
- Neoadjuvant Chemotherapy for Cervical Cancer Meta-Analysis Collaboration (NACCCMA) Collaboration. Neoadjuvant chemotherapy for locally advanced cervix cancer. *Cochrane Database Syst Rev*. 2004;(2):CD001774.
- Glynn-Jones R, Hoskin P. Neoadjuvant cisplatin chemotherapy before chemoradiation: a flawed paradigm? *J Clin Oncol*. 2007;25:5281–5286.
- Dueñas-Gonzalez A, Zarba JJ, Patel F, et al. Phase III, open-label, randomized study comparing concurrent gemcitabine plus cisplatin and radiation followed by adjuvant gemcitabine and cisplatin versus concurrent cisplatin and radiation in patients with stage IIB to IVA carcinoma of the cervix. *J Clin Oncol*. 2011;29:1678–1685.
- Choi HJ, Ju W, Myung SK, Kim Y. Diagnostic performance of computer tomography, magnetic resonance imaging, and positron emission tomography or positron emission tomography/computer tomography for detection of metastatic lymph nodes in patients with cervical cancer: meta-analysis. *Cancer Sci*. 2010;101:1471–1479.
- Kidd EA, Siegel BA, Dehdashti F, Grigsby PW. The standardized uptake value for F-18 fluorodeoxyglucose is a sensitive predictive biomarker for cervical cancer treatment response and survival. *Cancer*. 2007;110:1738–1744.
- Gouy S, Morice P, Narducci F, et al. Prospective multicenter study evaluating the survival of patients with locally advanced cervical cancer undergoing laparoscopic para-aortic lymphadenectomy before chemoradiotherapy in the era of positron emission tomography imaging. *J Clin Oncol*. 2013;31:3026–3033.
- Boellaard R, Delgado-Bolton R, Oyen WJ, et al. FDG PET/CT: EANM procedure guidelines for tumour imaging—version 2.0. *Eur J Nucl Med Mol Imaging*. 2015;42:328–354.
- Yen TC, See LC, Lai CH, et al. Standardized uptake value in para-aortic lymph nodes is a significant prognostic factor in patients with primary advanced squamous cervical cancer. *Eur J Nucl Med Mol Imaging*. 2008;35:493–501.
- Kidd EA, Siegel BA, Dehdashti F, et al. Lymph node staging by positron emission tomography in cervical cancer: relationship to prognosis. *J Clin Oncol*. 2010;28:2108–2113.
- Benito V, Carballo S, Silva P, et al. Should the presence of metastatic para-aortic lymph nodes in locally advanced cervical cancer lead to more aggressive treatment strategies? *J Minim Invasive Gynecol*. 2017;24:609–616.
- Kidd EA, Siegel BA, Dehdashti F, Grigsby PW. Pelvic lymph node F-18 fluorodeoxyglucose uptake as a prognostic biomarker in newly diagnosed patients with locally advanced cervical cancer. *Cancer*. 2010;116:1469–1475.
- Chong GO, Jeong SY, Park SH, et al. Comparison of the prognostic value of F-18 PET metabolic parameters of primary tumors and regional lymph nodes in patients with locally advanced cervical cancer who are treated with concurrent chemoradiotherapy. *PLoS One*. 2015;10:e0137743.
- Voglmaci M, Gabiache E, Lusque A, et al. Chemoradiotherapy for locally advanced cervix cancer without aortic lymph node involvement: can we consider metabolic parameters of pretherapeutic FDG-PET/CT for treatment tailoring? *Eur J Nucl Med Mol Imaging*. 2019;46:1551–1559.
- Xue F, Lin LL, Dehdashti F, Miller TR, Siegel BA, Grigsby PW. F-18 fluorodeoxyglucose uptake in primary cervical cancer as an indicator of prognosis after radiation therapy. *Gynecol Oncol*. 2006;101:147–151.
- Onal C, Reyhan M, Parlak C, Guler OC, Oymak E. Prognostic value of pre-treatment ^{18}F -fluorodeoxyglucose uptake in patients with cervical cancer treated with definitive chemoradiotherapy. *Int J Gynecol Cancer*. 2013;23:1104–1110.
- Cima S, Perrone AM, Castellucci P, et al. Prognostic impact of pretreatment fluorodeoxyglucose positron emission tomography/computed tomography SUV_{max} in patients with locally advanced cervical cancer. *Int J Gynecol Cancer*. 2018;28:575–580.
- Herrera FG, Breuneval T, Prior JO, Bourhis J, Ohsahin M. [^{18}F]FDG-PET/CT metabolic parameters as useful prognostic factors in cervical cancer patients treated with chemo-radiotherapy. *Radiat Oncol*. 2016;11:43.
- Hong JH, Jung US, Min KJ, Lee JK, Kim S, Eo JS. Prognostic value of total lesion glycolysis measured by ^{18}F -FDG PET/CT in patients with locally advanced cervical cancer. *Nucl Med Commun*. 2016;37:843–848.
- Leseur J, Roman-Jimenez G, Devillers A, et al. Pre- and per-treatment ^{18}F -FDG PET/CT parameters to predict recurrence and survival in cervical cancer. *Radiation Oncol*. 2016;120:512–518.
- Scher N, Castelli J, Depeursinge A, et al. (^{18}F)-FDG PET/CT parameters to predict survival and recurrence in patients with locally advanced cervical cancer treated with chemoradiotherapy. *Cancer Radiother*. 2018;22:229–235.
- Lima GM, Matti A, Vara G, et al. Prognostic value of posttreatment ^{18}F -FDG PET/CT and predictors of metabolic response to therapy in patients with locally advanced cervical cancer treated with concomitant chemoradiation therapy: an analysis of intensity- and volume-based PET parameters. *Eur J Nucl Med Mol Imaging*. 2018;45:2139–2146.
- Grigsby PW, Siegel BA, Dehdashti F, Rader J, Zoberi I. Posttherapy [^{18}F] fluorodeoxyglucose positron emission tomography in carcinoma of the cervix: response and outcome. *J Clin Oncol*. 2004;22:2167–2171.
- Schwarz JK, Siegel BA, Dehdashti F, Grigsby PW. Metabolic response on post-therapy FDG-PET predicts patterns of failure after radiotherapy for cervical cancer. *Int J Radiat Oncol Biol Phys*. 2012;83:185–190.
- Schwarz JK, Siegel BA, Dehdashti F, Grigsby PW. Association of posttherapy positron emission tomography with tumor response and survival in cervical carcinoma. *JAMA*. 2007;298:2289–2295.
- Wahl RL, Jacene H, Kasamon Y, Lodge MA. From RECIST to PERCIST: evolving considerations for PET response criteria in solid tumors. *J Nucl Med*. 2009;50(suppl 1):122S–150S.
- Chantalat E, Vidal F, Leguevaque P, et al. Para-aortic workup in locally advanced cervical cancer: heterogeneity is still the rule—results from a retrospective multicenter study. *Arch Gynecol Obstet*. 2016;293:1081–1086.