
The Neuroimaging Signature of Frontotemporal Lobar Degeneration Associated with *Granulin* Mutations: An Effective Connectivity Study

Enrico Premi¹, Mario Grassi², Stefano Gazzina¹, Barbara Paghera³, Daniele Pepe², Silvana Archetti⁴, Alessandro Padovani¹, and Barbara Borroni¹

¹Centre for Ageing Brain and Neurodegenerative Disorders, Neurology Unit, University of Brescia, Italy; ²Department of Epidemiology and Statistics, University of Pavia, Italy; ³Nuclear Medicine Unit, University of Brescia, Italy; and ⁴Department of Laboratories, III Laboratory of Analysis, Brescia Hospital, Brescia, Italy

It has been suggested that monogenic frontotemporal lobar degeneration (FTLD) due to *Granulin* (*GRN*) mutations might present a specific pattern of atrophy, as compared with FTLD *GRN*-negative disease. Recent literature has suggested that the study of functional neural networks, rather than regional structural damage, might better elucidate the pathogenic mechanisms, showing complex relationships among structural alterations observed with conventional neuroimaging. The aim of this study was to evaluate effective brain connectivity in FTLD patients carrying *GRN* mutations (*GRN*+), compared with FTLD patients without pathogenetic *GRN* mutations (*GRN*-) and healthy controls (HCs). **Methods:** Twenty-six FTLD patients (13 *GRN*+ and 13 *GRN*- matched for age, sex, and phenotype) and 13 age- and sex-matched HCs underwent brain perfusion SPECT. Brain regions involved in FTLD (dorsolateral, anterior cingulate, orbitofrontal, posterior temporal, temporal pole, and parietal) were used as regions of interest to identify functionally interconnected areas. An effective connectivity (path) analysis was defined with a PC algorithm (named after its inventors Peter Spirtes and Clark Glymour) search procedure and structural equation fitting. Statistically significant differences among the 3 groups were determined. **Results:** The best-fitting model was obtained by the data-driven approach, and brain connectivity pathways resembling state-of-the-art anatomic knowledge were obtained. When *GRN*+ and *GRN*- groups were considered, the former presented a selective bilateral parietotemporal disconnection, compared with *GRN*- patients. Furthermore, in FTLD *GRN*+ patients an increased compensative connectivity of the temporal regions (temporal pole and posterior temporal cortices) was observed. **Conclusion:** The present work suggests that impairment of effective functional connectivity of the parietotemporal regions is the hallmark of *GRN*-related FTLD. However, compensative mechanisms—which should be further investigated—may occur.

Key Words: frontotemporal dementia; frontotemporal lobar degeneration; granulin; mutation; SPECT; path analysis

J Nucl Med 2013; 54:1066–1071

DOI: 10.2967/jnumed.112.111773

Frontotemporal lobar degeneration (FTLD) is a common cause of young onset neurodegenerative dementia (1,2). FTLD is clinically and pathologically heterogeneous (3), and genetic factors play a significant role, with a genetic basis implicated in up to 40% of cases (4).

Discovery of disease-causing mutations in the *Granulin* (*GRN*) and microtubule-associated protein τ - (*MAPT*) genes and the expanded hexanucleotide repeat insertion within *C9orf72* have allowed a giant step forward in the knowledge of causative mechanisms of FTLD. Accordingly, recent literature has carefully detailed the peculiar features of these genetic forms, with the attempt to facilitate early and accurate diagnosis.

Autosomal-dominant inherited *GRN* disease has been associated with a varied clinical spectrum, ranging from behavioral variant frontotemporal dementia (bvFTD) to nonfluent/agrammatic subtypes of primary progressive aphasia (nfvPPA), and with a widespread and asymmetric pattern of atrophy that involved frontal, temporal, and parietal lobes (5–8). In light of these findings, it has been suggested that imaging could be useful to help predict *GRN* mutations and hence the underlying pathology. Thus, characterizing the patterns of atrophy associated with inherited disorders provides important insights into pathologic mechanisms. Despite the considerable neurobiologic and clinical interest in delineating the signature of structural damage associated with FTLD, the role of neuronal network breakdown has attracted much recent interest (9–11), because it might antedate regional atrophy. Statistical approaches based on structural equation modeling (SEM) might be of help in assessing the complex relationship within pathways of interest, considering single anatomic regions as a part of functional connections where specific alteration influences the entire network (12).

In the present study, we therefore used connectivity techniques to identify the critical neural links that differentiated autosomal-dominant *GRN*-related disease. To capture *GRN*-associated changes, we applied voxelwise covariance analysis and SEM to SPECT data.

MATERIALS AND METHODS

Subjects

We identified all patients seen at the Centre for Ageing Brain and Neurodegenerative Disorders, University of Brescia, Italy, who had been screened for mutations in *GRN* with a SPECT imaging scan. All

Received Jul. 25, 2012; revision accepted Nov. 7, 2012.
For correspondence or reprints contact: Barbara Borroni, Neurology Unit, University of Brescia, Piazza Spedali Civili 1, Brescia 25125, Italy.
E-mail: bborroni@inwind.it
Published online May 17, 2013.
COPYRIGHT © 2013 by the Society of Nuclear Medicine and Molecular Imaging, Inc.

TABLE 1
Demographic and Clinical Characteristics of Included Subjects

Variable	FTLD <i>GRN</i> + (<i>n</i> = 13)	FTLD <i>GRN</i> - (<i>n</i> = 13)	HC (<i>n</i> = 13)	<i>P</i>
Age at scan (y)	58.1 ± 5.1	60.6 ± 5.1	60.7 ± 10.0	0.86*
Age at onset (y)	56.1 ± 5.8	58.5 ± 4.9	—	0.27
Onset to scan (y)	2.1 ± 2.0	2.2 ± 1.3	—	0.91
Sex, male	46.2% (6)	46.2% (6)	61.5% (8)	0.66†
Education (y)	8.5 ± 4.1	6.5 ± 2.4	—	0.14
Family history	84.6% (11)	15.4% (2)	—	0.001†
Frontotemporal Dementia—modified Clinical Dementia Rating scale	5.4 ± 4.1	5.6 ± 2.9	—	0.85
Mini-Mental State Examination	24.1 ± 5.1	19.0 ± 9.3	—	0.10
Frontal Behavioral Inventory total score	15.8 ± 10.7	14.7 ± 9.2	—	0.79

*ANOVA test.

† χ^2 -square test.

Data in parentheses are no. of subjects. Results are from *t* test, unless otherwise specified.

included patients signed a written informed consent for the present study. Thirteen FTLD patients were identified, all carrying the *GRN Thr272fs* mutation (FTLD *GRN*+). We then identified a disease comparison group of age- and sex-matched FTLD patients. These patients were negative for genetic mutations within *GRN* (FTLD *GRN*-). Furthermore, the FTLD *GRN*- group did not carry mutations within *MAPT* and *C9orf72*.

GRN+ had either bvFTD (*n* = 5) or nvPPA (*n* = 8) (13,14), and FTLD *GRN*- were matched for diagnosis as well (5 bvFTD and 8 nvPPA).

Moreover, a group of 13 age- and sex-matched healthy controls (HCs) were included; a brief neuropsychological assessment was administered, and HCs performed within reference ranges in all cognitive domains.

The following additional stringent exclusion criteria were applied: cerebrovascular disorders, previous stroke, hydrocephalus, and intracranial mass documented by MR imaging; a history of traumatic brain injury or another neurologic disease; significant medical problems; and major depressive disorder, bipolar disorder, schizophrenia, substance abuse disorder, or mental retardation according to criteria of the DSM-IV (15).

The work conformed to the Helsinki Declaration and was approved by local Ethical Committee of Brescia Hospital, Italy.

^{99m}Tc-Ethylcysteinate Dimer SPECT Acquisition and Image Preprocessing Analysis

Subjects received an intravenous injection of ^{99m}Tc-ethylcysteinate dimer (1,110 MBq; Neurolite [Bristol-Myers Squibb Pharma]) while they rested supine with their eyes closed in a quiet, dimly lit room. All individuals were imaged using a dual-head rotating γ -camera (VG Millennium; GE Healthcare) fitted with a low-energy, high-resolution collimator, 30 min after intravenous injection of ^{99m}Tc-ethylcysteinate dimer. A 128 × 128 pixel matrix was used for image acquisition with 120 views over a 360° orbit (in 3° steps) and a pixel size and slice thickness of 1 mm, in 27 min or more if total counts were lower than 5 × 10⁶. Images were reconstructed using a ramp filtered-backprojection and 3-dimensionally smoothed with a Metz filter (order, 3; enhancement, 1.24; full width at half maximum, 6.7 mm; cutoff, 0.61 cycles cm⁻¹). The reconstructed images were corrected for γ -ray attenuation using the Chang method (attenuation coefficient, 0.11 cm⁻¹).

Statistical parametric mapping (SPM8; Wellcome Department of Cognitive Neurology, University College, London) and Matlab 7.6 (MathWorks Inc.) were used for image preprocessing. Images were spatially normalized to a reference stereotactic template (Montreal

Neurologic Institute) and smoothed by a gaussian kernel of 8 × 8 × 8 mm in full width at half maximum.

To evaluate patterns of hypoperfusion, exploratory comparisons across the different groups were made using *t*-statistics with appropriate linear contrasts. We considered any cluster above a statistical threshold set at *P* less than 0.001 uncorrected.

We generated a region of interest (ROI) for each region involved in the FTLD pathologic process (as demonstrated by neuroimaging and neuropathologic studies in FTLD) (16–18), using WFU PickAtlas (<http://www.fmri.wfubmc.edu>) (19). On both sides, ROIs of the

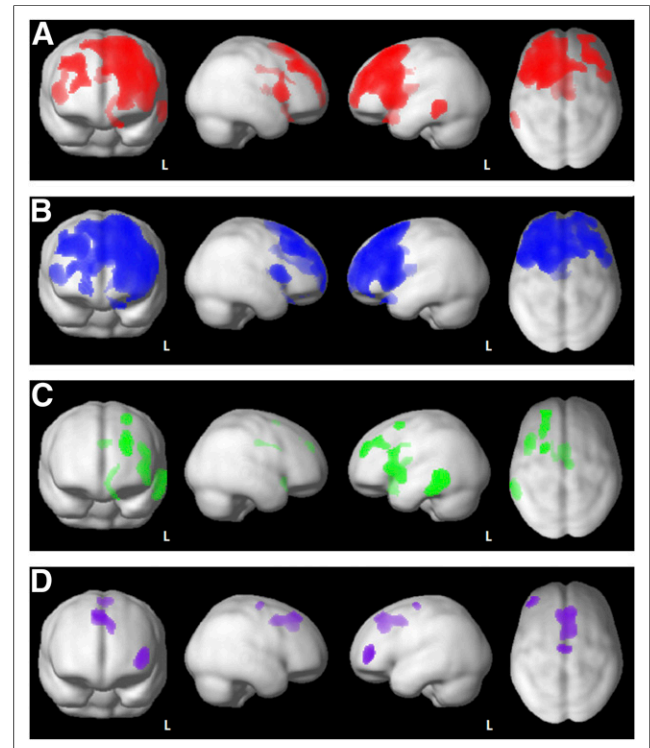


FIGURE 1. Reduction in regional cerebral perfusion in FTLD patients. Superimposed to 3-dimensional brain templates. (A) FTLD patients (*GRN*+ and *GRN*-) < HC. (B) *GRN*+ < HC. (C) *GRN*- < HC. (D) *GRN*+ < *GRN*-. Threshold was set at *P* < 0.005, uncorrected.

TABLE 2
Mean Scores of ROIs in 3 Groups

Variable	FLTD <i>GRN</i> +	FLTD <i>GRN</i> -	HC	<i>P</i>	
				1-Way ANOVA	1-Way ANOVA after correction for multiple comparisons*
DLPFC					
L	0.83 ± 0.09	0.92 ± 0.09	0.99 ± 0.05	<0.0001	0.015
R	0.87 ± 0.11	0.96 ± 0.09	1.02 ± 0.06	<0.0001	0.024
AntCing					
L	0.84 ± 0.10	0.92 ± 0.13	1.02 ± 0.07	0.001	Not significant
R	0.87 ± 0.09	0.94 ± 0.12	1.02 ± 0.08	0.001	Not significant
Orbit					
L	0.88 ± 0.10	0.96 ± 0.13	1.03 ± 0.04	0.001	Not significant
R	0.88 ± 0.09	0.95 ± 0.11	1.02 ± 0.06	0.003	Not significant
Temporal lobe					
L	0.99 ± 0.07	0.97 ± 0.09	1.06 ± 0.04	0.007	Not significant
R	0.99 ± 0.08	1.00 ± 0.07	1.06 ± 0.05	0.016	Not significant
TPol					
L	0.80 ± 0.06	0.81 ± 0.11	0.89 ± 0.04	0.007	Not significant
R	0.83 ± 0.06	0.85 ± 0.10	0.92 ± 0.03	0.008	Not significant
Parietal lobe					
L	1.02 ± 0.08	1.06 ± 0.09	1.09 ± 0.04	Not significant	Not significant
R	1.03 ± 0.08	1.07 ± 0.08	1.10 ± 0.05	Not significant	Not significant

*Bonferroni post hoc analysis between *GRN*+ and *GRN*-.

dorsolateral prefrontal cortex (DLPFC), anterior cingulate cortex (AntCing), orbitofrontal cortex (Orbit), temporal cortex (Temp), temporal pole region (TPol), and parietal cortex (Pariet) were considered. To avoid methodologic biases, the mean perfusion in the cerebellar hemispheres (left and right) was compared, and no significant differences were found. Thus, we corrected each generated ROI for cerebellar perfusion, to ensure homogeneity of the data.

Path Analysis Modeling

Path analysis was performed within the theoretic framework of SEM—a multivariate regression technique that models the covariance structure of a set of variables—and is based on a subset of possible paths connecting those variables. Unlike simple-seed ROI-based covariance analysis (functional connectivity), SEM incorporates the directional information. Path coefficients (or path weights, ranging from 0 to 1) represent the expected change in the activity of 1 region, given

a unit change in the region influencing it and assuming that no other influencing regions had any change. Because paths reflect a direct influence of one region to another, based on total regional metabolic activity, negative path coefficients indicate ensemble inhibition and positive paths measure net excitation (12).

Effective connectivity analysis involved the following 2 major steps. First, we tested hypothesis-driven models (i.e., H models) of the connections between ROIs, based on covariance analysis and neuroanatomy literature (20–22), and then data-driven models (i.e., PC models), based on PCALG (PC algorithm) search procedures (23). The PC algorithm (named after its inventors Peter Spirtes and Clark Glymour) estimates a completed partially directed acyclic graph, using the ROI correlation matrix as input. A completed partially directed acyclic graph contains the equivalence class of undirected and directed edges (connections) between nodes (ROIs). Thus, we identified which of the candidate models (either H or PC) had the best fitting,

TABLE 3
Hypothesis Driven (H0–H3) and Data-Driven (PC0–PC3) Models Fitted to Neuroimaging Data

Model	Log-L	<i>t</i>	Akaike Information Criterion	Bayesian Information Criterion	Goodness-of-fit index	Comparative-fit index	Standardized root mean square residual
Null	-644.188	24					
H0	-396.537	29	851.1	899.3	0.368	0.609	0.442
H1	-327.014	42	738.0	807.9	0.472	0.754	0.149
H2	-256.931	46	605.9	682.4	0.657	0.911	0.071
H3	-252.687	47	599.4	677.6	0.674	0.919	0.058
PC0	-316.699	39	711.4	776.3	0.492	0.781	0.143
PC1	-298.970	40	677.9	744.5	0.532	0.821	0.180
PC2	-281.594	45	653.2	728.0	0.577	0.855	0.125
PC3	-250.137	47	594.3	672.5	0.684	0.925	0.052

Log-L = loglikelihood; *t* = no. of parameters; Null = null model with zero covariances.

according to SEM goodness-of-fit criteria (the minimum Akaike and Bayesian information scores [Akaike Information Criterion and Bayesian Information Criterion], fit indices [goodness-of-fit index and comparative fit index] > 0.90, and standardized residual mean square residual > 0.10).

Subsequently, with the selected best path model, we used a multi-group SEM method to evaluate the connection differences between groups. In the null model, the estimate of the path coefficients was considered to be equal across groups; in the alternative model, the estimate of the path coefficients was allowed to differ across groups. An omnibus test (null vs. alternative) was then performed, and statistical significance was determined by comparison of χ^2 (X2diff) values of fit at given degrees of freedom. If there were significant difference ($P < 0.05$) in the χ^2 goodness-of-fit index between 2 models, it could be concluded that the groups differed significantly for one or more specific connections in the context of the referred model.

The path model search and path analysis (SEM) processing were done by *pcalg*, a package of R 2.15.0 (R Development Core Team), and Mplus 6.1 (Muthén & Muthén Co.), respectively.

RESULTS

Subjects

Demographic and clinical characteristics of the study participants are detailed in Table 1.

Patient groups were matched for age, sex, and disease subtype. FTLD *GRN+* and FTLD *GRN-* did not differ for any demographic variables except for family history, which was significantly higher in the FTLD *GRN+* group.

As shown in Figure 1, the main effect of diagnosis (*GRN+* and *GRN-* < HC, Fig. 1A) correlates with a remarkable hypoperfusion in frontotemporal areas; this pattern was also found when the 2 subgroups of patients were compared with HCs, separately (Figs. 1B and 1C). Furthermore, a main effect of mutation (*GRN+* < *GRN-*) on AntCing and left DLPFC was present (Fig. 1D). For all the aforementioned analyses, no cluster survived after correction for multiple comparisons.

As reported in Table 2, the mean scores of defined ROIs were comparable between FTLD *GRN+* and *GRN-*, but the former showed a reduced ROI in DLPFC, bilaterally.

Model Connectivity Search

The previously selected 6 cortical areas were included in the path model selection using the correlation matrix of the ROIs as input. Table 3 summarizes the goodness-of-fit indices of the different models, obtained by an a priori hypothesis (H0–H4) and PCALG search (PC0–PC3). Model H0 or PC0 identified the core model of hypothesis-driven and data-driven structures, respectively. H1–H3 or PC1–PC3 were those models with additional connections defined by SEM modification indices (24). The PC3 model had the best scores: minimum information criteria (Akaike Information Criterion and Bayesian Information Criterion), comparative fit index of 0.992 (>0.90), and standardized residual mean square residual of 0.52 (>0.10). The unidirectional (bidirectional) functional connectivity of the PC3 model is shown in Figure 2. In particular, the left and right hemispheres had the same functional connectivity: AntCing was affected by Orbit (Orbit → AntCing), whereas Temp and Tpol were the initial and final activation regions for 3 cycles: Temp → Pariet → TPOL, Temp → DLPFC → Orbit TPOL, and Temp → Pariet → Orbit → TPOL, respectively. Interhemispherically, there were feedback links for homologous brain regions; the additional connections are reported as well.

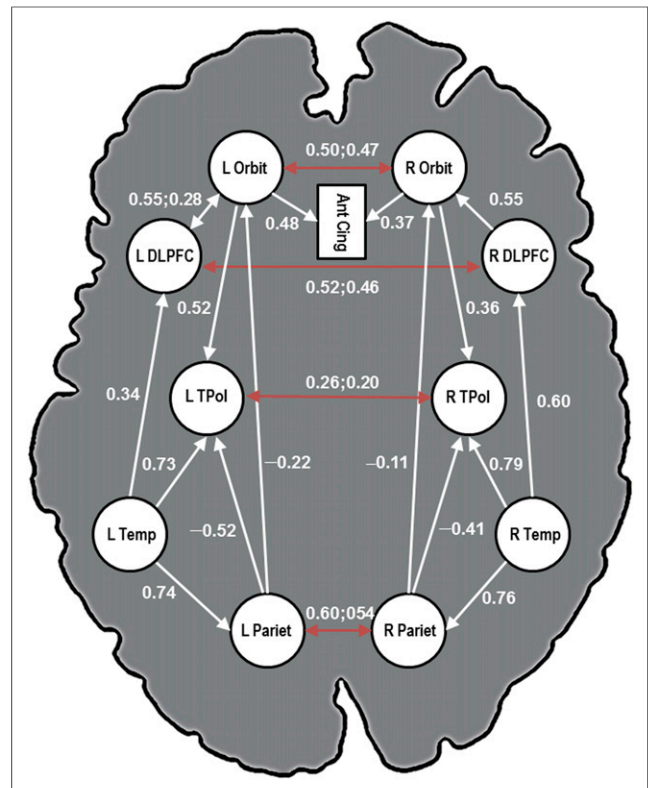


FIGURE 2. Unidirectional (bidirectional) functional connectivity of best PCALG model. Unidirectional (bidirectional) arrows provides specific directional (feedback) information between different areas.

Differential Connectivity Analysis

The SEM parameters (path coefficients and residual variances) of the best PCALG functional network on the aforementioned brain regions and connections were fitted in a multigroup SEM analysis. This model proved to be significantly different between pairwise group comparisons: *GRN+* vs. *GRN-* ($X2diff = 35.2_{21}$, $P = 0.027$), *GRN+* vs. HC ($X2diff = 38.6_{21}$, $P = 0.011$), and *GRN-* vs. HC ($X2diff = 53.8_{21}$, $P < 0.001$). The significant differential links among the brain regions found in *GRN+* and *GRN-* are shown in Figure 3. In contrast to *GRN-*, FTLD *GRN+* showed a different complex pattern of effective connectivity in parietotemporal cortex, bilaterally. A reduced covariance between the Pariet and Tpol and an increased connectivity between the posterior Temp and TPOL were evident (Fig. 3A). On the other hand, *GRN-* presented a reduced connectivity between the Orbit and AntCing and between the Temp and DLPFC (on the right), whereas an increased covariance between the Orbit and TPOL, bilaterally, was found (Fig. 3B). Finally, both *GRN-* and *GRN+* showed a reduced connectivity between the DLPFC and Orbit.

DISCUSSION

The predominant pathologic involvement of frontal and temporal regions is the signature of FTLD, and this involvement is a supportive criterion for the clinical diagnosis of the disease. However, in the last decade, the growth of neuroimaging techniques and the application of complex statistical methods have highlighted that beyond considering anatomic regions the

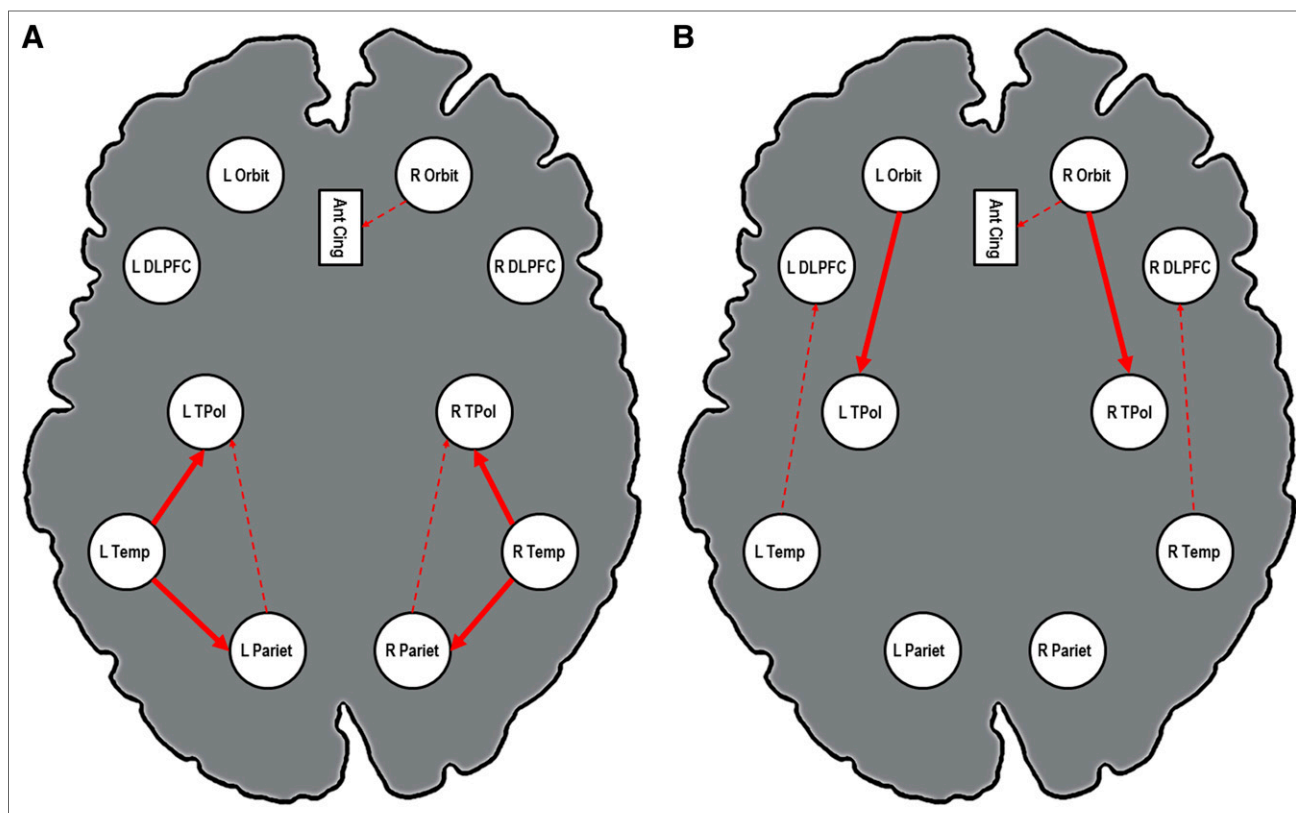


FIGURE 3. Differential functional connectivity in FTLN patients with or without *Granulin* mutations. Red solid lines indicate significant enhanced pathways, and broken lines indicate significant reduced pathways ($P < 0.05$). (A) FTLN due to *Granulin* mutation. (B) Fronto-temporal dementia without known pathogenic mutations.

involvement of wide neural networks—where single regions were functionally correlated—are of interest (10,25). This correlation has allowed a more precise definition of the neuroanatomic correlates of the pathologic hallmarks, giving significant clues to the molecular underpinnings of the disease itself (26–28).

Furthermore, the study of cases with disease-causing mutations within *GRN*, *MAPT*, and, more recently, the expanded hexanucleotide repeat insertion within *C9orf72* showed overlap and high variability of these different neuropathologic processes (5,21,29). How the alteration of a specific causative gene (i.e., *GRN*) leads to the involvement of specific brain regions and the impairment of several brain networks is still unclear (30,31).

In the present study, we evaluated the effective connectivity in autosomal-dominant *GRN*-related FTLN, as compared with FTLN patients without pathogenic *GRN* mutations and HCs, applying a statistical approach (path analysis) based on SEM on SPECT images. Considering previous data on a founder effect (32), we selected only apparently unrelated FTLN *GRN*+ patients to reduce the potential biases. The direct whole-brain comparison showed greater damage in the DLPFC in FTLN *GRN*+ than FTLN *GRN*–, as shown in Figure 2 and Table 2. Thus, the theoretic framework of the pathway analysis allowed us to overcome the whole-brain alterations of the perfusion pattern and to focus on large-scale network involvement.

In the present work, we reported that the signature of *GRN* disease was a significant disconnection between the Pariet and TPol, with a concomitant increased connectivity from the posterior Temp to the TPol and the parietal lobe. Furthermore, in the *GRN*– group,

a disconnection between DLPFC and Temp was reported, with a relative hyperconnectivity from the Orbit and the TPol, bilaterally.

Our results are in line with previous literature on *GRN*-related FTLN assessed by structural imaging. It has been demonstrated that patients carrying *GRN* mutations had greater frontoparietal gray matter atrophy and involvement of long intrahemispheric association white matter tracts (11,22). Furthermore, data on functional brain networks underlined the selective and specific involvement of parietal networks in autosomal-dominant *GRN* disease (9,33,34). Interestingly, connectivity analysis showed a bilateral temporoparietal disconnection. This finding is probably related to the different (left or right) parietal hypoperfusion in the *GRN*+ group and is in line with literature on *GRN*-related FTLN (8,35). On the other hand, other FTLNs showed greater frontotemporal damage than *GRN* mutations.

In line with this evidence, our work confirms and extends previous studies suggesting that different proteinopathies lead to FTLN by a selective vulnerability of brain networks (36) and likely begin from distinct brain regions that act as a hublike epicenter (37).

As interestingly suggested by Warren et al. (38), neurodegenerative dementias, as well as FTLN with different neuropathologic substrate, might result from the progressive spreading of the neurodegenerative process from a defined epicenter in the target network over common transneural pathways. This concept, defined as molecular nexopathies, hypothesized that *GRN* mutations cause a specific and preferential involvement of long intrahemispheric tracts between target networks and off-target pathways (i.e., temporoparietal regions).

More research is needed to bridge the gap between molecular aspects of FTLT and the neuropathologic alterations driving the clinical and radiologic presentation (39,40). Large international initiatives with multimodal imaging techniques with high-level statistical tools are required to confirm and extend the field of the molecular nexopathies.

CONCLUSION

Our data showed a selective functional disconnection of the temporoparietal network in patients with *GRN*+ and, in addition, suggested a potential complex compensative mechanism involving temporotemporal connections. Moreover, the present study argued that compensative networks might be identified in FTLT without *GRN* mutations, representing potential targets for nonpharmacological approaches.

DISCLOSURE

The costs of publication of this article were defrayed in part by the payment of page charges. Therefore, and solely to indicate this fact, this article is hereby marked “advertisement” in accordance with 18 USC section 1734. No potential conflict of interest relevant to this article was reported.

REFERENCES

1. Ratnavalli E, Brayne C, Dawson K, Hodges JR. The prevalence of frontotemporal dementia. *Neurology*. 2002;58:1615–1621.
2. Borroni B, Alberici A, Grassi M, et al. Is frontotemporal lobar degeneration a rare disorder? Evidence from a preliminary study in Brescia county, Italy. *J Alzheimers Dis*. 2010;19:111–116.
3. Seelaar H, Rohrer JD, Pijnenburg YA, Fox NC, van Swieten JC. Clinical, genetic and pathological heterogeneity of frontotemporal dementia: a review. *J Neurol Neurosurg Psychiatry*. 2011;82:476–486.
4. Rohrer JD, Warren JD. Phenotypic signatures of genetic frontotemporal dementia. *Curr Opin Neurol*. 2011;24:542–549.
5. Whitwell JL, Jack CR Jr, Baker M, et al. Voxel-based morphometry in frontotemporal lobar degeneration with ubiquitin-positive inclusions with and without progranulin mutations. *Arch Neurol*. 2007;64:371–376.
6. Whitwell JL, Przybelski SA, Weigand SD, et al. Distinct anatomical subtypes of the behavioural variant of frontotemporal dementia: a cluster analysis study. *Brain*. 2009;132:2932–2946.
7. Rohrer JD, Ridgway GR, Modat M, et al. Distinct profiles of brain atrophy in frontotemporal lobar degeneration caused by progranulin and tau mutations. *Neuroimage*. 2010;53:1070–1076.
8. Beck J, Rohrer JD, Campbell T, et al. A distinct clinical, neuropsychological and radiological phenotype is associated with progranulin gene mutations in a large UK series. *Brain*. 2008;131:706–720.
9. Seeley WW, Crawford R, Rascofsky K, et al. Frontal paralimbic network atrophy in very mild behavioral variant frontotemporal dementia. *Arch Neurol*. 2008;65:249–255.
10. Borroni B, Alberici A, Cercignani M, et al. Granulin mutation drives brain damage and reorganization from preclinical to symptomatic FTLT. *Neurobiol Aging*. 2012;33:2506–2520.
11. Rohrer JD, Geser F, Zhou J, et al. TDP-43 subtypes are associated with distinct atrophy patterns in frontotemporal dementia. *Neurology*. 2010;75:2204–2211.
12. McIntosh AR, Gonzalez-Lima F. Structural equation modeling and its application to network analysis in functional brain imaging. *Hum Brain Mapp*. 1994;1:2–22.

13. Rascofsky K, Hodges JR, Knopman D, et al. Sensitivity of revised diagnostic criteria for the behavioural variant of frontotemporal dementia. *Brain*. 2011;134:2456–2477.
14. Gorno-Tempini ML, Hillis AE, Weintraub S, et al. Classification of primary progressive aphasia and its variants. *Neurology*. 2011;76:1006–1014.
15. American Psychiatric Association (APA). *Diagnostic and Statistical Manual of Mental Disorders: DSM-IV-TR*. Arlington, VA: APA; 2000.
16. Dickson DW, Kouri N, Murray ME, Josephs KA. Neuropathology of frontotemporal lobar degeneration-tau (FTLT-tau). *J Mol Neurosci*. 2011;45:384–389.
17. Mackenzie IR. The neuropathology and clinical phenotype of FTLT with progranulin mutations. *Acta Neuropathol*. 2007;114:49–54.
18. Whitwell JL, Josephs KA. Neuroimaging in frontotemporal lobar degeneration—predicting molecular pathology. *Nat Rev Neurol*. 2011;8:131–142.
19. Maldjian JA, Laurienti PJ, Kraft RA, Burdette JH. An automated method for neuroanatomic and cytoarchitectonic atlas-based interrogation of fMRI data sets. *Neuroimage*. 2003;19:1233–1239.
20. Cilia R, Cho SS, van Eimeren T, et al. Pathological gambling in patients with Parkinson’s disease is associated with fronto-striatal disconnection: a path modeling analysis. *Mov Disord*. 2011;26:225–233.
21. Whitwell JL, Weigand SD, Boeve BF, et al. Neuroimaging signatures of frontotemporal dementia genetics: C9ORF72, tau, progranulin and sporadics. *Brain*. 2012;135:794–806.
22. Whitwell JL, Avula R, Senjem ML, et al. Gray and white matter water diffusion in the syndromic variants of frontotemporal dementia. *Neurology*. 2010;74:1279–1287.
23. Spirtes P, Glymour CN, Scheines R. *Causation, Prediction, and Search*. Cambridge, MA: The MIT Press. 2000.
24. Kline R. *Principles and Practice of Structural Equation Modeling*. New York, NY: The Guilford Press; 2010.
25. Zhou J, Greicius MD, Gennatas ED, et al. Divergent network connectivity changes in behavioural variant frontotemporal dementia and Alzheimer’s disease. *Brain*. 2010;133:1352–1367.
26. Seeley WW, Crawford RK, Zhou J, Miller BL, Greicius MD. Neurodegenerative diseases target large-scale human brain networks. *Neuron*. 2009;62:42–52.
27. Pievani M, de HW, Wu T, Seeley WW, Frisoni GB. Functional network disruption in the degenerative dementias. *Lancet Neurol*. 2011;10:829–843.
28. Irish M, Piguet O, Hodges JR. Self-projection and the default network in frontotemporal dementia. *Nat Rev Neurol*. 2011;8:152–161.
29. Rohrer JD, Lashley T, Schott JM, et al. Clinical and neuroanatomical signatures of tissue pathology in frontotemporal lobar degeneration. *Brain*. 2011;134:2565–2581.
30. Ward ME, Miller BL. Potential mechanisms of progranulin-deficient FTLT. *J Mol Neurosci*. 2011;45:574–582.
31. Sun L, Eriksen JL. Recent insights into the involvement of progranulin in frontotemporal dementia. *Curr Neuroparmacol*. 2011;9:632–642.
32. Borroni B, Bonvicini C, Galimberti D, et al. Founder effect and estimation of the age of the progranulin Thr272fs mutation in 14 Italian pedigrees with frontotemporal lobar degeneration. *Neurobiol Aging*. 2011;32:555–558.
33. Seeley WW. Selective functional, regional, and neuronal vulnerability in frontotemporal dementia. *Curr Opin Neurol*. 2008;21:701–707.
34. Borroni B, Alberici A, Premi E, et al. Brain magnetic resonance imaging structural changes in a pedigree of asymptomatic progranulin mutation carriers. *Rejuvenation Res*. 2008;11:585–595.
35. Whitwell JL, Xu J, Mandrekar J, et al. Frontal asymmetry in behavioral variant frontotemporal dementia: clinicimaging and pathogenetic correlates. *Neurobiol Aging*. 2013;34:636–639.
36. Raj A, Kuceyeski A, Weiner M. A network diffusion model of disease progression in dementia. *Neuron*. 2012;73:1204–1215.
37. Zhou J, Gennatas ED, Kramer JH, Miller BL, Seeley WW. Predicting regional neurodegeneration from the healthy brain functional connectome. *Neuron*. 2012;73:1216–1227.
38. Warren JD, Rohrer JD, Hardy J. Disintegrating brain networks: from syndromes to molecular nexopathies. *Neuron*. 2012;73:1060–1062.
39. Davion S, Johnson N, Weintraub S, et al. Clinicopathologic correlation in PGRN mutations. *Neurology*. 2007;69:1113–1121.
40. McDade E, Boeve BF, Burrus TM, et al. Similar clinical and neuroimaging features in monozygotic twin pair with mutation in progranulin. *Neurology*. 2012;78:1245–1249.