

Erratum

In the article entitled "Inverse Relationship Between Cardiac Accumulation of meta^[131I]-Iodobenzylguanidine)-131 MIBG) and Circulating Catecholamines in Suspected Pheochromocytoma," Vol. 24, December 1983, pp. 1127-1134, Figures 1 and 2 were labeled incorrectly. They are shown correctly below:

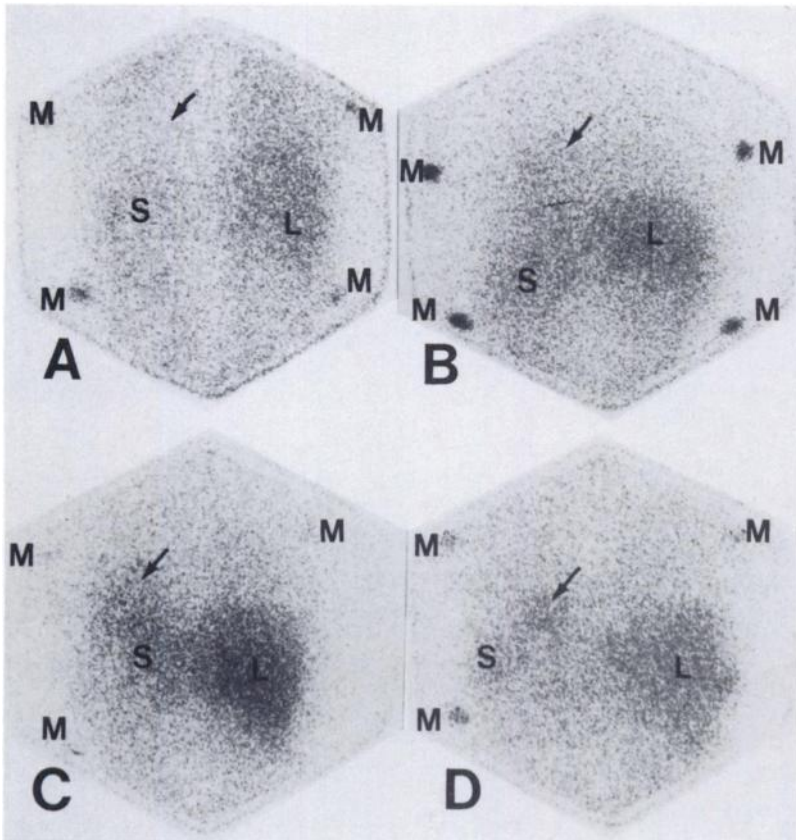


FIG. 1. Grades of cardiac uptake. Posterior chest/abdomen images 24 hr after injection of MIBG. A = Grade 0, B = Grade 1, C = Grade 2, D = Grade 3. Region of heart indicated by arrow; L = Liver, S = spleen, M = surface markers.

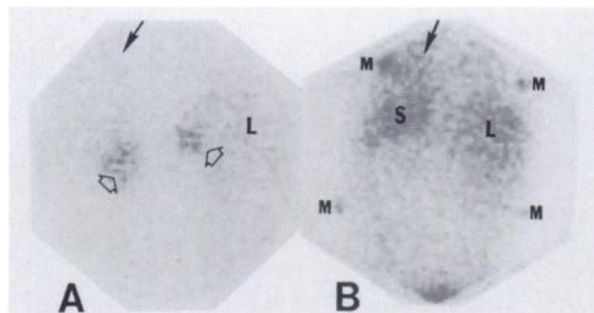


FIG. 2. Change of heart intensity in patient with bilateral pheochromocytomas. A: Heart was not seen before surgery (Grade 0). B: Grade 2 heart intensity was observed after surgery. Region of heart indicated by closed arrow. Bilateral pheochromocytomas indicated by open arrows; L = liver S = spleen M = surface markers.