
Comparison of High-Resolution MRI and SPECT Bone Scintigraphy for Noninvasive Imaging of the Temporomandibular Joint

Arthur Z. Krasnow, B. David Collier, J. Bruce Kneeland, Guillermo F. Carrera, Doran E. Ryan, David Gingrass, Steven Sewall, Robert S. Hellman, Ali T. Isitman, Wojciech Froncisz, A. Jesmanowicz, and James S. Hyde

Department of Radiology and Department of Oral and Maxillofacial Surgery, Medical College of Wisconsin, Milwaukee, Wisconsin

Prospective evaluation by magnetic resonance imaging (MRI) and both single photon emission computed tomography (SPECT) and planar bone scintigraphy was undertaken in 31 temporomandibular joints (TMJs) of 21 symptomatic patients. When compared with the results of subsequent arthrography, MRI (0.88) was more sensitive than SPECT (0.76) or planar (0.56) scintigraphy for detection of internal derangement of the TMJ. A diagnostic sensitivity of 0.96 was achieved when the results of either MRI or SPECT was considered evidence of internal joint derangement. Five symptomatic TMJs, clinically thought to be abnormal, were positive on SPECT but showed no evidence of anterior disk displacement at the time of arthrography. In such instances, SPECT may be detecting functionally significant altered joint mechanics that are not evident on anatomic imaging of the TMJ.

J Nucl Med 28:1268-1274, 1987

Symptomatic internal derangement of the temporomandibular joint (TMJ) may affect as much as 25% of the adult population with a smaller, but nonetheless significant, percentage of adults suffering serious disability due to this disorder (1,2). Although some individuals with internal derangement of the TMJ experience only minimal, intermittent symptoms, others experience pain, crepitus, opening snap, and/or limited opening for which they seek professional advice. History and physical examination often will implicate internal derangement of the TMJ as the cause for these symptoms. However, even the most experienced clinician frequently cannot distinguish with confidence between the various possible etiologies for facial pain (2-8). Therefore, important therapeutic judgements—such as the decision to continue nonsurgical therapy or advance to surgical intervention—should be based on a clinical evaluation with radiographic confirmation (9).

Anterior displacement of the disk within the TMJ frequently is cited as the earliest detectable anatomic change associated with internal joint derangement (10-12). The desire of clinicians to detect such anterior displacement of the disk and thereby confirm the diagnosis of internal joint derangement provided the impetus for development of TMJ arthrography (13,14). It is now generally accepted that arthrography performed by an experienced skeletal radiologist is proof of morbid anatomic change within the TMJ (15-18).

More recently the noninvasive imaging techniques of computed tomography (CT) (19-24) and magnetic resonance imaging (MRI) (25-30) have been used to clarify the anatomy of the TMJ. Although experience with MRI is more recent and preliminary, reports to date suggest that the anteriorly displaced disk can be easily imaged using this technique. Both planar and single photon emission computed tomography (SPECT) bone scintigraphy also have been used to detect the functionally abnormal TMJ (31-33). SPECT bone scintigraphy, in particular, has been shown to be a highly sensitive screening test when used to detect internal derangement of the TMJ (31,33). To date, the

Received Aug. 4, 1986; revision accepted Feb. 23, 1987.

For reprints contact: B. David Collier, MD, Dept. of Nuclear Medicine, Medical College of Wisconsin, 8700 W. Wisconsin Ave., Milwaukee, WI 53226.

clinician seeking to confirm the diagnosis of internal joint derangement by means of a noninvasive imaging test has had no scientific basis for choosing between MRI and SPECT bone scintigraphy. Therefore, a prospective study comparing these two techniques was undertaken in a series of symptomatic patients scheduled for subsequent TMJ arthrography.

MATERIALS AND METHODS

Prospective evaluation by MRI and both SPECT and planar bone scintigraphy was undertaken for 31 TMJ of 21 symptomatic adult patients. Ages ranged from 17 to 67 yr (mean, 30.5 yr), with 19 female and two male patients. All patients had a detailed clinical history and a thorough oral and maxillofacial examination (Table 1). Following noninvasive imaging and subsequent arthrography, these patients eventually were treated by one or more of the following means: splint therapy, physical therapy, or TMJ surgery.

High-resolution MRI was performed using 3-in.-diameter counter rotating current loop gap resonators as local receiver coils (34,35). Using a 1.5-Tesla commercially available MRI system,* T1 weighted (TR = 500 msec and TE = 20–25 msec) 3-mm thick sagittal tomographic images with a 16-cm field-of-view were obtained. Patients were examined in both jaw-open and jaw-closed positions. Before beginning this prospective evaluation, the appearance on MRI of normal TMJ anatomy was determined by examining a small group of asymptomatic volunteers and symptomatic patients with normal TMJ arthrography. MRI reports were rendered without benefit of scintigraphic or subsequent arthrographic results.

Bone scintigraphy was performed 3 hr after an intravenous injection of 25 mCi (925 MBq) of technetium-99m MDP (^{99m}Tc]MDP). For planar bone scintigraphy, 500,000-count anterior, right lateral, and left lateral view images were obtained using a gamma camera equipped with a low-energy high-resolution collimator. SPECT examinations were performed with a rotating gamma camera device† equipped with a low-energy, general-purpose collimator. All data were acquired and processed as 64 × 64 matrices. Sixty-four projections over 360° were acquired for 20 sec per projection. Following uniformity correction and filtering of the projections (Hanning filter with a cutoff frequency of 0.8 cycle/cm),

6-mm thick transaxial, coronal, and sagittal tomograms were reconstructed using filtered backprojection with a ramp filter. Planar and SPECT bone scintigraphy were independently evaluated by three nuclear medicine physicians using previously described criteria (31). (Normal exam for an asymptomatic individual is shown in Fig. 1.) Planar and SPECT images were evaluated separately without benefit of clinical or radiographic correlation. Planar and SPECT examinations were considered abnormal only if at least two readers agreed on the presence of a positive finding.

Arthrograms were performed after MRI and bone scintigraphy using a previously described technique of contrast material injection into the lower compartment of the TMJ with fluoroscopy, video dynamic study, and spot radiography (unpublished data). TMJ arthrography was performed and reviewed by a skeletal radiologist (GFC) without knowledge of the MRI, SPECT, and planar findings. For this study, exams were interpreted as having either normal or anterior displaced disks. Although perforations and other morbid anatomic changes were occasionally found during arthrography, all TMJs with these abnormalities also had anterior displaced disks. MRI and scintigraphy results were subsequently correlated with the arthrographic findings of an anteriorly displaced disk.

RESULTS

Arthrography demonstrated 25 joints with anterior displacement of the disk in addition to six anatomically normal, albeit symptomatic, joints. Correlation of these results with evidence for a displaced disk on MRI, or increased TMJ scintigraphic activity on SPECT or planar imaging, allowed calculation of diagnostic sensitivities and specificities (Table 2). Of the 25 abnormal TMJs, there were only 17 for which both SPECT and MRI were positive (Fig. 2). In addition, there were two TMJs with abnormal arthrography for which SPECT was positive but MRI was falsely negative. Only one TMJ with arthrographic proof of a displaced disk was falsely normal on both SPECT and MRI.

There were five false-positive SPECT examinations of the TMJ. These were instances in which symptomatic joints (i.e., TMJs thought to have significant internal derangement by an oral surgeon) were associated with increased scintigraphic activity but normal disk position by arthrography (Fig. 3). MRI was also falsely positive for two of these five joints.

Although SPECT is superior to planar imaging, as an initial screening test for internal derangement of the TMJ, it failed to detect five of the abnormal joints that were correctly identified by MRI. However, SPECT did correctly predict abnormalities in two other joints that were felt to be normal in MRI.

DISCUSSION

With a sensitivity of 0.88, MRI is suitable for use as a high sensitivity noninvasive screening test to establish

TABLE 1
Clinical Findings

History and symptoms	
Trauma	23%
Symptoms for more than 6 mo	87%
Pain	
Severe	55%
Moderate	32%
Mild	13%
Headache	90%
Physical findings	
Crepitus	13%
Snap	65%
Closed lock	39%
Abnormal bite	65%

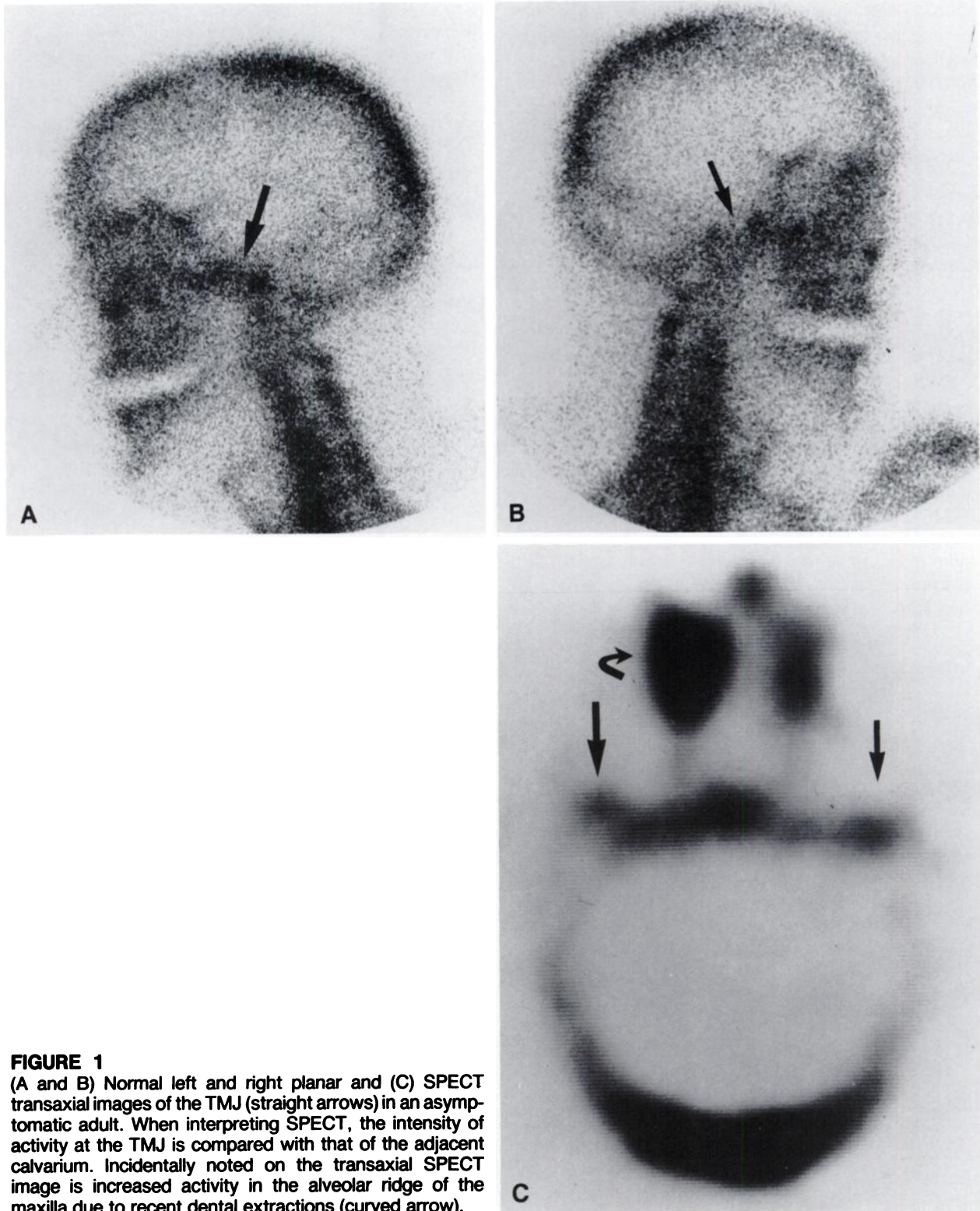


FIGURE 1

(A and B) Normal left and right planar and (C) SPECT transaxial images of the TMJ (straight arrows) in an asymptomatic adult. When interpreting SPECT, the intensity of activity at the TMJ is compared with that of the adjacent calvarium. Incidentally noted on the transaxial SPECT image is increased activity in the alveolar ridge of the maxilla due to recent dental extractions (curved arrow).

the presence of an abnormal anteriorly displaced disk. The sensitivity of SPECT was only 0.76. Although this difference is not statistically significant, the result suggests that MRI correlates more closely with morbid soft-tissue joint anatomy. However, SPECT did detect two abnormal joints that were not correctly identified

by MRI. If both MRI and SPECT had been used in combination to screen for internal derangement of the TMJ, the sensitivity would have risen to 0.96. There were no instances in which planar scintigraphy provided information not available on the SPECT images. However, the relatively low 0.56 sensitivity of planar imaging

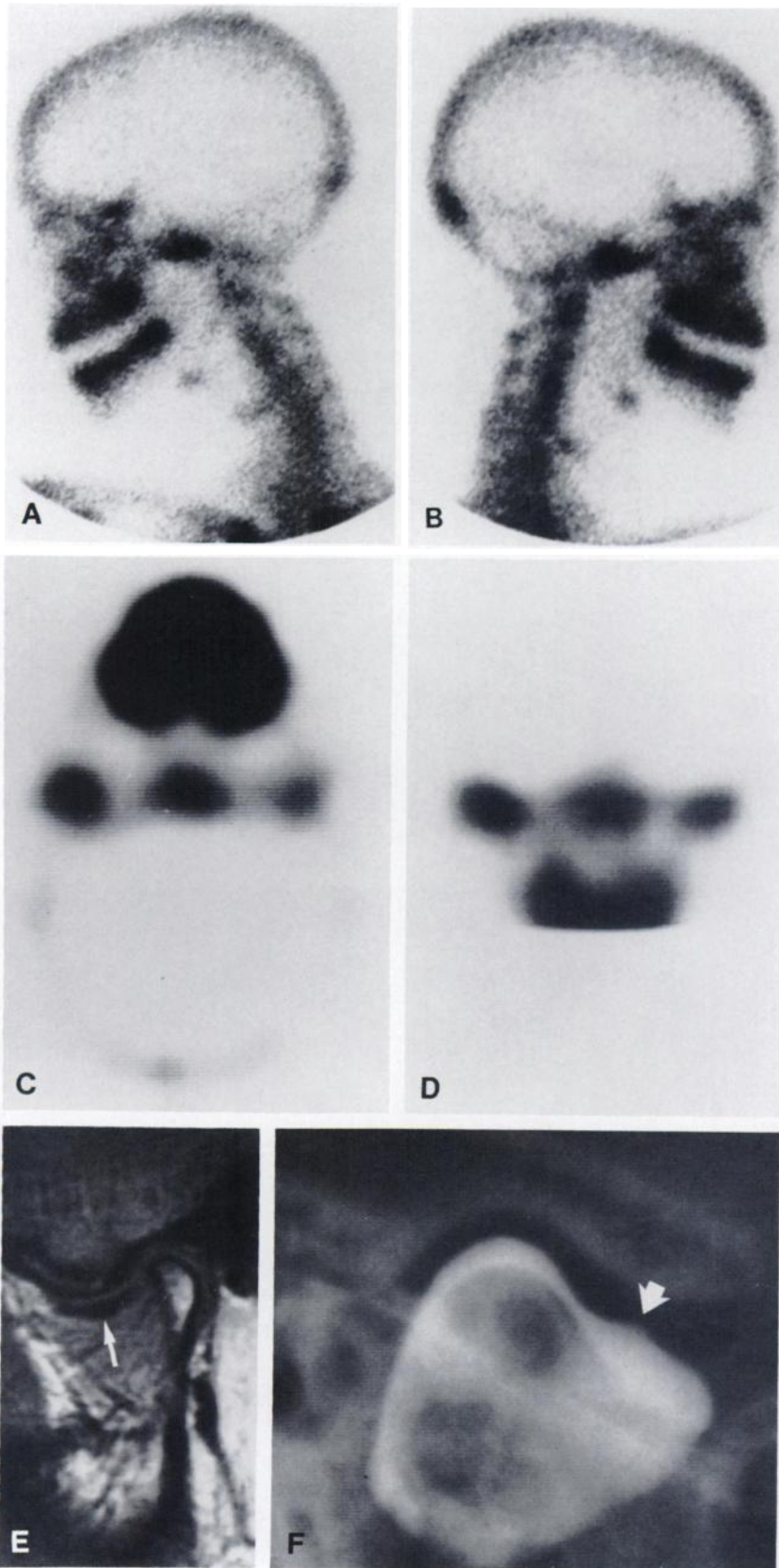


FIGURE 2
 Symptomatic 17-yr-old female with bilateral TMJ pain and snap on opening of the jaw. (A-D) Planar, coronal SPECT, and transaxial SPECT images show increased activity, right greater than left, in the TMJ. Also present is increased activity along the alveolar ridge of both the mandible and the maxilla. (E) MRI shows an anteriorly displaced disk (arrow). (F) Arthrography confirmed the anterior displacement of the disk (arrow).

TABLE 2
Diagnostic Efficacy of Noninvasive Imaging Technique
When Compared with Arthrographic Proof of TMJ Status

Modality	Sensitivity (n = 25)	Specificity (n = 6)	Accuracy (n = 6)
MRI	0.88	0.50	0.81
SPECT	0.76	0.17	0.49
Planar	0.56	0.33	0.39

(Table 2) might be improved upon if one choose to use pinhole collimation and/or both open- and closed-mouth positioning.

The low (0.17) specificity of SPECT, reported to be as high as 0.70 in other series (31), may reflect the fact that only symptomatic TMJs were included in this series. Possibly, the increased scintigraphic activity about these TMJs reflects functionally significant abnormal joint mechanics without any anterior displace-

ment of the disk. Unfortunately, there is no proof for the cause of jaw pain for four of these joints at the time of bone scintigraphy. However, they all improved significantly following splint therapy or other conservative TMJ treatment. One patient subsequently went on to surgery and was found to have anterior disk displacement despite the earlier normal arthrogram.

We conclude, as has been shown previously (31), that SPECT rather than planar imaging is the optimal technique for TMJ scintigraphy. MRI correlates more closely with anatomic information about disc position obtained during TMJ arthrography. Although SPECT examinations were also abnormal in many of the patients with anteriorly displaced disks, this examination may identify functionally significant abnormalities of the TMJ. In the future, cost may play a role in deciding which imaging test should be used for TMJ evaluation. Currently at our institution an MRI examination is

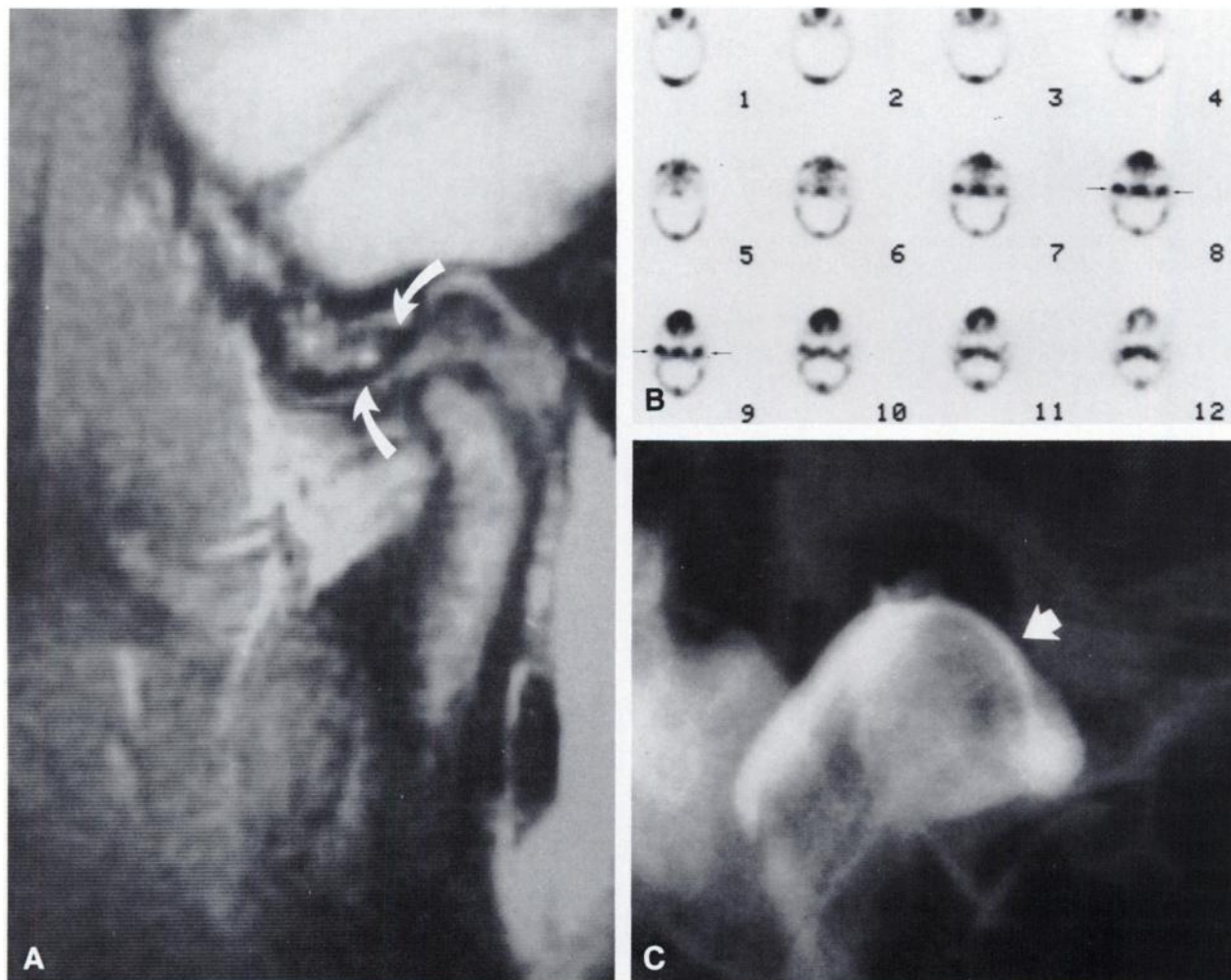


FIGURE 3
Symptomatic 25-yr-old male with prior jaw trauma, severe joint pain, and headache, with findings of a closed lock on physical examination. A: Normal MRI of the right TMJ (arrow indicates position of the disk), B: Positive 6-mm thick sequential SPECT transaxial images (arrows), and C: Normal arthrogram (arrow indicates position of the disk). Note that the intensity of the activity in the region of the TMJ is significantly greater than that seen in Figure 1. Ten months later, the patient had substantial relief of symptoms with only conservative therapy.

approximately twice the cost of a SPECT study. Either MRI or SPECT is suitable for noninvasive confirmation of the clinical diagnosis of TMJ derangement and, when both techniques are employed, the joint diagnostic sensitivity is well over 0.90.

NOTES

- * General Electric Medical Systems, Milwaukee, WI.
- † 400T, General Electric Medical Systems, Milwaukee, WI.

ACKNOWLEDGMENT

This work was supported in part by Grant CA-41464 from the National Institutes of Health.

REFERENCES

1. Solberg WK, Woo MW, Houston JB. Prevalence of mandibular dysfunction in young adults. *J Am Dent Assoc* 1979; 98:25-34.
2. Guralnick W, Kaban LB, Merrill RG. Temporomandibular joint afflictions. *N Engl J Med* 1978; 299:123-129.
3. Farrar WB. Diagnosis and treatment of painful temporomandibular joints. *J Prosthet Dent* 1968; 20:345-351.
4. Farrar WB. Differentiation of temporomandibular joint dysfunction to simplify treatment. *J Prosthet Dent* 1972; 28:629-636.
5. Laskin D. The etiology of the myofascial pain dysfunction syndrome. *J Am Dent Assoc* 1969; 79:147-153.
6. Weinberg LA. The etiology, diagnosis, and treatment of TMJ dysfunction—pain syndrome. Part I: etiology. *J Prosthet Dent* 1979; 42:654-664.
7. Weinberg LA. The etiology, diagnosis, and treatment of TMJ dysfunction pain syndrome: differential diagnosis. *J Prosthet Dent* 1980; 43:58-70.
8. Wilkes CA. Structural and functional alterations of temporomandibular joint. *Northwest Dent* 1978; 57:287-294.
9. Weinberg LA. The etiology, diagnosis, and treatment of the TMJ dysfunction pain syndrome: treatment. *J Prosthet Dent* 1980; 43:186-196.
10. Farrar WB. Characteristics of the condylar path in internal derangements of the TMJ. *J Prosthet Dent* 1978; 39:319-323.
11. Scapino RP. Histopathology associated with malposition of the human temporomandibular joint disc. *J Oral Surg* 1983; 55:382-397.
12. Weinberg LA. Anterior condylar displacement: its diagnosis and treatment. *J Prosthet Dent* 1975; 34:195-207.
13. Toller PA. Opaque arthrography of the temporomandibular joint. *Int J Oral Surg* 1974; 3:17-28.
14. Katzberg RW, Dolwick MF, Bales DS, et al. Arthro-tomography of the temporomandibular joint: new technique and preliminary observations. *Am J Roentgenol* 1979; 132:949-955.
15. Blaschke DD, Solberg WK, Sanders B. Arthrography of the temporomandibular joint: review of current status. *J Am Dent Assoc* 1980; 100:388-395.
16. Bronstein SL, Tomaseth BS, Ryan DE. Internal derangements of the temporomandibular joint: correlation of arthrography with surgical findings. *J Oral Surg* 1981; 39:572-584.
17. Katzberg RW, Dolwick MF, Helms CA, et al. Arthro-tomography of the temporomandibular joint. *Am J Roentgenol* 1980; 134:995-1003.
18. Lynch TP, Chase DC. Arthrography in the evaluation of the temporomandibular joint. *Radiology* 1978; 126:667-672.
19. Helms CA, Vogler JB, Morrish RB Jr, et al. Tempo-romandibular joint internal derangements: CT diag-nosis. *Radiology* 1984; 152:459-462.
20. Kaplan PA. Computed tomography vs. arthrography in the evaluation of the temporomandibular joint. *Radiology* 1984; 152:825-827.
21. Manco LG, Messing SG, Basino LJ, et al. Internal derangements of the temporomandibular joint evalu-ated with direct sagittal CT: a prospective study. *Ra-diology* 1985; 157:407-412.
22. Manzione JV, Katzberg RW, Brodsky GL, et al. In-ternal derangements of the temporomandibular joint diagnosis by direct sagittal computed tomography. *Radiology* 1984; 150:111-115.
23. Thompson JR, Christiansen E, Hasso AN, et al. Tempo-romandibular joints: high resolution computed tomographic evaluation. *Radiology* 1984; 150:105-110.
24. Sartoris DJ, Neumann CH, Riley RW. Temporoman-dibular joint: true sagittal computed tomography with meniscus visualization. *Radiology* 1984; 150:250-254.
25. Harms SE, Wilk RM, Wolford LM, et al. The tempo-romandibular joint: magnetic resonance imaging using surface coils. *Radiology* 1985; 157:133-136.
26. Helms CA, Richardson ML, Moon KL, et al. Nuclear magnetic resonance imaging of the temporomandib-ular joint: preliminary observations. *J Craniomandib Pract* 1984; 2:219-224.
27. Katzberg RW, Schenck JF, Roberts D, et al. Magnetic resonance of the temporomandibular joint meniscus. *Oral Surg* 1985; 59:332-335.
28. Katzberg RW, Bessette RW, Tallents RH, et al. Nor-mal and abnormal temporomandibular joint: MR im-aging with surface coil. *Radiology* 1986; 158:183-189.
29. Roberts D, Schenck JF, Joseph P, et al. Temporoman-dibular joint: magnetic resonance imaging. *Radiology* 1985; 155:829-830.
30. Carrera GF, Kneeland JB, Collier BD, et al. High resolution MRI of derangements of the temporoman-dibular joint. Presented at the 71st Scientific Assembly of the Radiological Society of North America, Chi-cago, IL, November, 1985.
31. Collier BD, Carrera GF, Messer EJ, et al. Internal derangement of the temporomandibular joint: detec-tion by single-photon emission computed tomogra-phy. *Radiology* 1983; 149:557-561.
32. Goldstein HA, Bloom CY. Detection of degenerative disease of the temporomandibular joint by bone scin-tigraphy: Concise communication. *J Nucl Med* 1980; 21:928-930.
33. Katzberg RW, O'Mara RE, Tallents RH. Radio-nuclide skeletal imaging and single photon emission computed tomography in suspected internal derange-

- ments of the temporomandibular joint. *J Oral Maxillofac Surg* 1984; 42:782-787.
34. Froncisz W, Jesmanowicz A, Kneeland JB, et al. Counter rotating current local coils for high resolution magnetic resonance imaging. *Mag Res Med* 1986; 3:590-603.
35. Kneeland JB, Carrera GF, Middleton WD, et al. Rotator cuff tears: preliminary applications of high resolution MR imaging with counter rotating current loop-gag resonators. *Radiology* 1986; 160:695-699.